



A valmont TELECOM COMPANY

AT&T Approved Product Guide

We're the backbone
of the wireless industry.

Providing critical infrastructure,
enhancing connectivity.

Serving wireless carriers, contractors, and integrators since 2004, we are telecom's premier manufacturer and distributor of wireless site components.

You need it fast? We've got you covered.

Our nationwide warehouses are fully stocked and strategically located around the U.S. to facilitate the immediate shipment of your order. With the addition of our latest locations, we reach 99% of the U.S. within a single day.

Quality you would expect from Valmont.

Engineered and manufactured to exacting tolerances with comprehensive quality control processes in place, our products are the best quality available anywhere. Period. We build with the contractor in mind; our parts are securely packaged, safe to use, and easy to install.

We're constantly innovating. It's part of who we are.

Our engineering and product development teams belong to all prominent telecommunication trade organizations and have a keen eye on new developments and changes to the industry. This foresight enables us to remain at the cutting edge of new developments and challenges, allowing us to provide efficient, cost-effective new technologies that solve our customers' unique challenges.

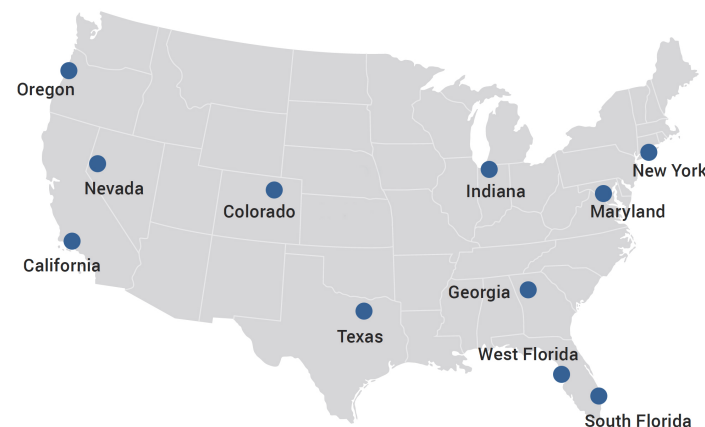
With us, you're first.

Everything we do is with our customers in mind, and providing an optimal experience is our top priority. Whether purchasing through our knowledgeable customer service team or our fast and secure website online, we guarantee that you will have a first-class experience.



A **valmont** COMPANY

Our Locations



New York

15 Oser Ave
Hauppauge, NY 11788

Indiana

1545 Pidco Dr
Plymouth, IN 46563

Maryland

8200 Stayton Drive, Ste 700
Jessup, MD 20794

South Florida

33 Commerce Way
Jupiter, FL 33458

Colorado

14200 E 35th Pl, Ste 105
Aurora, CO 80111

Georgia

4100 Westpark Dr SW, Ste C
Atlanta, GA 30336

Oregon

3573 25th St SE
Salem, OR 97302

West Florida

5122 Joanne Kearney Blvd
Tampa, FL 33619

Nevada

960 East Greg Street, Bldg 6
Sparks, NV 89431

California

12661 Corral Pl
Santa Fe Springs, CA 90670

Texas

2045 Westgate Dr, Ste 110
Carrollton, TX 75006

Valmont Telecom Locations

Indiana

Plymouth, IN

Oregon

Salem, OR

Texas

Brenham, TX

Arizona

Tucson, AZ

Colorado

Colorado Springs, CO

Company

• About Us	Inside Cover
• EasyAlign™ Overview	2
• Retrofit Guide	3

Tower Sites

• Sector Frames	3
• Tower Reinforcement Kits	5
• Stand-Off Mounts	7
• Tower Mounts	8
• Tower Components	12
• Ice Shields	16

Monopole Sites

• Monopole Mounts	17
• Reinforcement Kits	23
• Monopole Components	26
• Handrail Kits	30

Rooftop Sites

• Rooftop Mounts	32
------------------	----

Wall Mounts & Chimney Mounts

• Wall Mounts	34
• Chimney Mounts	35

Ice Bridges & Equipment Racks

• Ice Bridge Components	36
-------------------------	----

Hardware

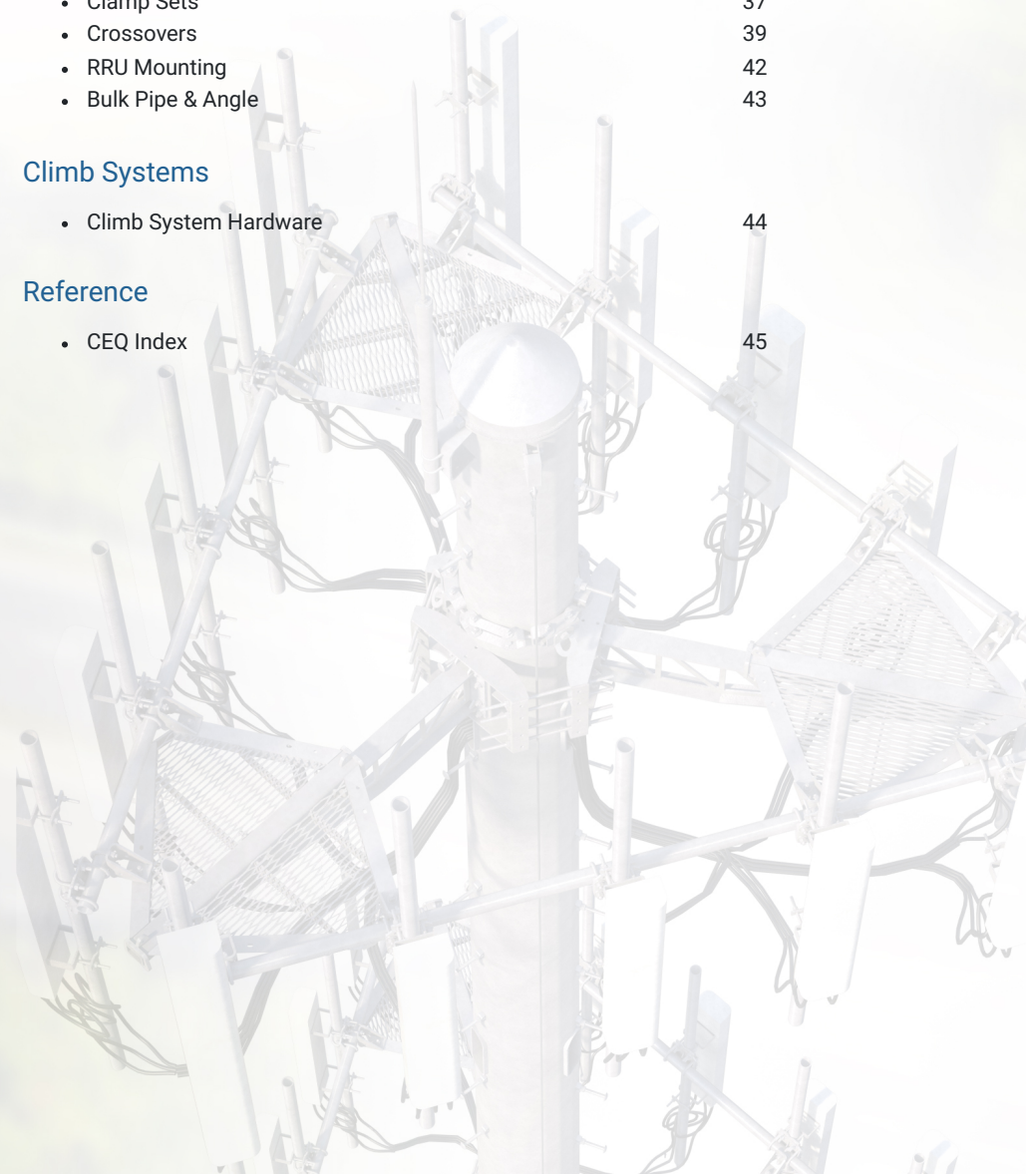
• Clamp Sets	37
• Crossovers	39
• RRU Mounting	42
• Bulk Pipe & Angle	43

Climb Systems

• Climb System Hardware	44
-------------------------	----

Reference

• CEQ Index	45
-------------	----

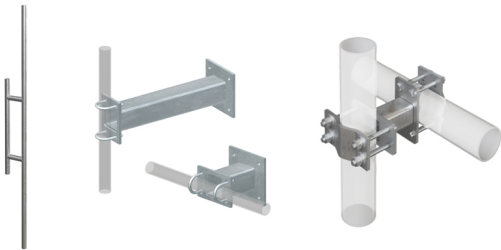




Easily adjust azimuth skew on pre-existing mounts for optimal RF propagation.

Our EasyAlign™ adjustable mounting solutions are specifically designed to enable seamless antenna alignment and spacing adjustments, and can be retrofitted to existing mounts, providing enhanced cost savings.

- ✓ Streamlined antenna azimuth adjustments.
- ✓ Increase space between equipment.
- ✓ Enhanced PIM Mitigation.
- ✓ Cost-saving solutions, install on existing mounts.



View product selections and retrofit information on next page.

Easy Skew Adjustment

Easily adjustable azimuth for precise alignment.

Easy Spacing Adjustment

Spacing between equipment is easily modifiable.

RMQP Series™ Low-Profile Platform
with SOCX Standoff Crossover Kit

Easy Azimuth Adjustment

This products can be retrofit to existing sites, enabling the easy azimuth adjustment of antennas and mounts.

Type	Part #	Product	AT&T CEQ #
Retrofit	VCX1-2K	Standoff Mounts	ANT.58513
Retrofit	SOCX3-U	Standoff Mounts	ANT.58516
Retrofit	SOCX6-U	Standoff Mounts	ANT.58514
Retrofit	SOCX9-U	Standoff Mounts	ANT.58517
Retrofit	SOCX12-U	Standoff Mounts	ANT.58515
Retrofit	WWM01-DCP	Large Standoff Mount	ANT.58518
Retrofit	WWM02-DCP	Large Standoff Mount	ANT.58519
Retrofit	PM1	Standoff Mounts	ANT.55115
Retrofit	PM2	Standoff Mounts	ANT.55117
Retrofit	PM1-278	Standoff Mounts	ANT.55115
Retrofit	PM2-278	Standoff Mounts	ANT.55117
Retrofit & New	FACE-ASY1-30126	Universal Face Pipe Mounts	ANT.54768
Retrofit & New	FACE - ASY1-3126	Universal Face Pipe Mounts	ANT.54745
Retrofit & New	FACE - ASY1-4126	Universal Face Pipe Mounts	ANT.54765
New	MSFAA	Monopole Sector Frame Adapters	ANT.55965
New	MSFAA-Q	Monopole Sector Frame Adapters	ANT.58532
New	VFA10-HDS-NPNH	Sector Frames	ANT.55969
New	VFA10-HD-NPNH	Sector Frames	ANT.55984
New	VFA12-HDS-NPNH	Sector Frames	ANT.55981
New	VFA12-HD-NPNH	Sector Frames	ANT.55995
New	VFA14-HD-NPNH	Sector Frames	ANT.56004
New	VFA14-HD80-NPNH	Sector Frames	ANT.56002
New	VOG14-NPNH	Sector Frames w/ 5' Standoff	ANT.55971
New	RMVD10-NPNH	Monopole Dual-Level Triple T-Arm Kit	ANT.55987
New	RMVD12-NPNH	Monopole Dual-Level Triple T-Arm Kit	ANT.55970
New	RMVDQ8-NPNH	Monopole Dual-Level Triple T-Arm Kit	ANT.58532

Spacing Solutions

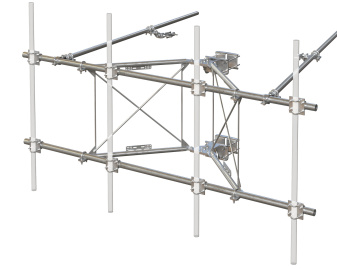
This products can be retrofit to existing sites, providing the ability to add space between equipment.

Type	Part #	Product	AT&T CEQ #
Retrofit & New	PIM-SOS1	Internal Leg Mounting	ANT.58533
Retrofit & New	PIM-SOS2	Internal Leg Mounting	ANT.58528
Retrofit & New	RRU-FU2	PIM Shield® Dual RRU Mount	ANT.57080
Retrofit & New	BBPM-K1	Back-to-Back Pipe Mounts	ANT.58531
Retrofit & New	BBPM-K2	Back-to-Back Pipe Mounts	ANT.58529
Retrofit & New	BBPM-K3	Back-to-Back Pipe Mounts	ANT.56902
Retrofit & New	BBPM-U	Back-to-Back Pipe Mounts	ANT.58530
Retrofit & New	SAMAST-3	Platform RRU Mount Kit	ANT.58538
Retrofit & New	SAMAST-6	Platform RRU Mount Kit	ANT.58537

XD Series™ V-Frames

Our XD Series™ V-frames are the strongest sector frames we've ever built, offering enhanced RF capabilities and featuring our innovative RRU QuickPlate™ pipe mount.

- Features BCAM™ Taper Adjustment System
- Feature our Quick-Plate™ for easy grounding and addition of RRU mounting pipes or unistrut
- Include stiff arm and hardware to mount 2-3/8" and 2-7/8" antenna mounting pipes (Sold Separately)
- Frames rotate for easy azimuth adjustment
- When ordering V-Frames for use with round chimney mounts or monopole direct frame connection kits add "-NLB" to the part number to get the frame without the leg bracket hardware
- AT&T RF Build Standard Compliant
- Contact us for load and engineering data



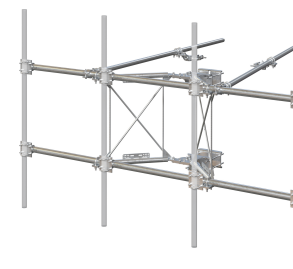
CEQ #	Part #	Face Width	Antenna Mounting Qty.	Stiff Arm Qty.	Mounts to Leg Sizes	Weight
ANT.59449	VFA12-XDS-BF	12'	N/A	1	1-1/2" to 9-1/2" Round Legs and 3" to 6" Angles	499 lbs.
ANT.59452	VFA10-XDS-BF	10'	N/A	1	1-1/2" to 9-1/2" Round Legs and 3" to 6" Angles	475 lbs.
ANT.59453	VFA10-XD-BF	10'	N/A	2	1-1/2" to 9-1/2" Round Legs and 3" to 6" Angles	568 lbs.
ANT.59496	VFA8-XD-NPNH	8'	N/A	2	1-1/2" to 9-1/2" Round Legs and 3" to 6" Angles	695 lbs.
ANT.59489	VFA8-XDS-NPNH	8'	N/A	1	1-1/2" to 9-1/2" Round Legs and 3" to 6" Angles	590 lbs.
ANT.59495	VFA8-XD-BF	8'	N/A	2	1-1/2" to 9-1/2" Round Legs and 3" to 6" Angles	537 lbs.
ANT.59491	VFA8-XDS-BF	8'	N/A	1	1-1/2" to 9-1/2" Round Legs and 3" to 6" Angles	443 lbs.
ANT.59456	VFA14-XD-BF	15'	N/A	2	N/A	607 lbs.
ANT.59461	VFA12-XD-BF	13'	N/A	2	N/A	593 lbs.
ANT.59458	VFA14-XDS-BF	14'	N/A	1	1-1/2" to 9-1/2" Round Legs and 3" to 6" Angles	513 lbs.
ANT.59459	VFA14-XD-NPNH	14'	N/A	2	1-1/2" to 9-1/2" Round Legs and 3" to 6" Angles	754 lbs.
ANT.59446	VFA14-XDS-NPNH	14'	N/A	1	1-1/2" to 9-1/2" Round Legs and 3" to 6" Angles	660 lbs.
ANT.59462	VFA12-XD-NPNH	12'	N/A	2	1-1/2" to 9-1/2" Round Legs and 3" to 6" Angles	740 lbs.
ANT.59455	VFA12-XDS-NPNH	12'	N/A	1	1-1/2" to 9-1/2" Round Legs and 3" to 6" Angles	646 lbs.
ANT.59451	VFA10-XD-NPNH	10'	N/A	2	1-1/2" to 9-1/2" Round Legs and 3" to 6" Angles	715 lbs.
ANT.59454	VFA10-XDS-NPNH	10'	N/A	1	1-1/2" to 9-1/2" Round Legs and 3" to 6" Angles	622 lbs.

CEQ #	Part #	Name	Weight
ANT.54763	BCAM-HDLL	BCAM™ Large Round Leg Adapter	134 lbs.
ANT.54760	BCAM-HDLL-AA	BCAM™ Large Angle Leg Adapter	131 lbs.
ANT.59488	VPM-K	V-Frame Pipe Mount Kit	21 lbs.

HD Series™ V-Frames

These HD Series™ V-frames are available with one or two stiff arms and feature our innovative BCAM™ Taper Adjustment System.

- Feature our Quick-Plate™ for easy grounding and addition of RRU mounting pipes or unistrut
- Include stiff arm and hardware to mount 2-3/8" and 2-7/8" antenna mounting pipes (Sold Separately)
- Frames rotate for easy azimuth adjustment
- For round chimney mounts or monopole kits, add "-NLB" to part numbers for frames without leg brackets.
- Contact us for load and engineering data



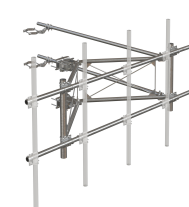
CEQ #	Part #	Face Width	Antenna Mounting Qty.	Stiff Arm Qty.	Mounts to Leg Sizes	Weight
ANT.57082	VFA6-HD-S	7'-0"	2	1	1-1/2" to 9-1/2" Round Legs and 3" to 6" Angles	522 lbs.
ANT.55969	VFA10-HDS-NPNH	10'	N/A	1	1-1/2" to 9-1/2" Round Legs and 3" to 6" Angles	551 lbs.
ANT.55984	VFA10-HD-NPNH	10'	N/A	2	1-1/2" to 9-1/2" Round Legs and 3" to 6" Angles	637 lbs.
ANT.55981	VFA12-HDS-NPNH	12'	N/A	1	1-1/2" to 9-1/2" Round Legs and 3" to 6" Angles	575 lbs.
ANT.55995	VFA12-HD-NPNH	12'	N/A	2	1-1/2" to 9-1/2" Round Legs and 3" to 6" Angles	662 lbs.
ANT.56004	VFA14-HD-NPNH	14'	N/A	2	1-1/2" to 9-1/2" Round Legs and 3" to 6" Angles	679 lbs.
ANT.56002	VFA14-HD80-NPNH	14'	N/A	2	1-1/2" to 9-1/2" Round Legs and 3" to 6" Angles	747 lbs.
ANT.55994	VFA10-HDS-BF	10'	N/A	1	1-1/2" to 9-1/2" Round Legs and 3" to 6" Angles	403 lbs.
ANT.56012	VFA10-HD-BF	10'	N/A	2	1-1/2" to 9-1/2" Round Legs and 3" to 6" Angles	490 lbs.
ANT.55966	VFA12-HDS-BF	12'	N/A	1	1-1/2" to 9-1/2" Round Legs and 3" to 6" Angles	438 lbs.
ANT.55991	VFA12-HD-BF	12'	N/A	2	1-1/2" to 9-1/2" Round Legs and 3" to 6" Angles	515 lbs.
ANT.55988	VFA14-HD-BF	14'	N/A	2	1-1/2" to 9-1/2" Round Legs and 3" to 6" Angles	535 lbs.
ANT.55972	VFA14-HD80-BF	14'	N/A	2	1-1/2" to 9-1/2" Round Legs and 3" to 6" Angles	600 lbs.

CEQ #	Part #	Name	Weight
ANT.54763	BCAM-HDLL	BCAM™ Large Round Leg Adapter	134 lbs.
ANT.54760	BCAM-HDLL-AA	BCAM™ Large Angle Leg Adapter	131 lbs.
ANT.59488	VPM-K	V-Frame Pipe Mount Kit	21 lbs.

Extreme Duty™ V-Frames

Our strongest sector frames yet. They are available with one or two stiff arms and feature our innovative BCAM™ Taper Adjustment System.

- Features BCAM™ Taper Adjustment System
- Include stiff arm and hardware to mount 2-3/8" and 2-7/8" antenna mounting pipes (Sold Separately)
- Frames rotate for easy azimuth adjustment
- Contact us for load and engineering data

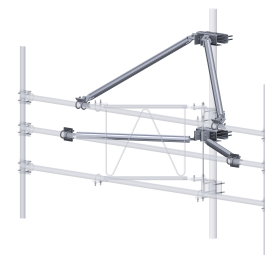


CEQ #	Part #	Face Width	Stiff Arm Qty.	Mounts to Leg Sizes	Stand-Off Distance	Weight
ANT.55971	VOG14-NPNH	14'-5"	2	1-1/2" to 9-1/2" Round Legs and 3" to 6" Angles	60"	915 lbs.

Pipe V-Style Sector Frame Stabilizer Kits

These V-style sector frame stabilizer kits provide additional support to existing sector frames.

- Pipe bracing for reduced wind area
- Fits 2-3/8" or 2-7/8" OD crossarms
- Universal mounting; round legs from 1" - 8", 60° angle legs from 1-1/2" - 8", and 90° angles 1-1/2" - 6"
- Large-Leg Adapter Kit available for round legs up to 12-3/4", 60° angle legs up to 12", and 90° angle legs up to 8-1/2"
- Contact us for load and engineering data



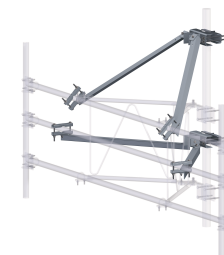
CEQ #	Part #	Stabilizer Direction	Stabilizer Material	Stand-Off Distance	Weight
CEQ.53331	VSK-TH	Horizontal	Pipe	24" to 36"	98 lbs.
CEQ.53319	VSK-TH-L	Horizontal	Pipe	36" to 48"	120 lbs.
CEQ.53321	VSK-TV	Vertical	Pipe	24" to 36"	100 lbs.
CEQ.53328	VSK-TV-L	Vertical	Pipe	36" to 48"	118 lbs.

CEQ #	Part #	Name	Weight
ANT.16459	TAM-LL	Large Leg Adapter Kit for Tower Mounts & Reinforcement Kits	39 lbs.

Angle Sector Frame Stabilizer Kits

These sector frame stabilizer kits add additional support to existing sector frames.

- The maximum additional normal load capacity gained is 1,050 lb, the maximum additional tangential load capacity gained is 300 lb, and the maximum additional dead load capacity is 0 lb
- Universal mounting; round legs from 1" - 8", 60° angle legs from 1-1/2" - 8", and 90° angles 1-1/2" - 6"
- Large-leg adapter kit available for round legs up to 12-3/4", 60° angle legs up to 12", and 90° angle legs up to 8-1/2"
- Contact us for load and engineering data



CEQ #	Part #	Stabilizer Direction	Stabilizer Material	Stand-Off Distance	Weight
ANT.16460	SFS-H	Horizontal	Angle	24" to 36"	67 lbs.
CEQ.53324	SFS-H-L	Horizontal	Angle	36" to 48"	77 lbs.
ANT.16461	SFS-V	Vertical	Angle	24" to 36"	66 lbs.
CEQ.53329	SFS-V-L	Vertical	Angle	36" to 48"	77 lbs.

CEQ #	Part #	Name	Weight
ANT.16459	TAM-LL	Large Leg Adapter Kit for Tower Mounts & Reinforcement Kits	39 lbs.

Pipe V-Style Sector Frame Reinforcement Kits

These universal V-style sector frame reinforcement kits provide extra capacity to existing sector frames for mounting RRU's.

- Provide both vertical and horizontal reinforcement
- Pipe bracing for reduced wind area
- Fits 2-3/8" or 2-7/8" OD crossarms
- Universal mounting; round legs from 1" - 8", 60° angle legs from 1-1/2" - 8", and 90° angle legs from 1-1/2" - 6"
- Large-leg adapter kit available for round legs up to 12-3/4", 60° angle legs up to 12", and 90° angle legs up to 8-1/2"
- Contact us for load and engineering data

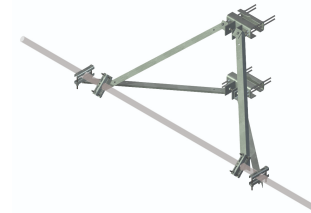


CEQ #	Part #	Stabilizer Direction	Stand-Off Distance	Weight
CEQ.53338	VSK-SFR	Horizontal and Vertical	24" to 36"	200 lbs.
CEQ.53339	VSK-SFR-L	Horizontal and Vertical	36" to 48"	236 lbs.
CEQ #	Part #	Name		Weight
ANT.16459	TAM-LL	Large Leg Adapter Kit for Tower Mounts & Reinforcement Kits		39 lbs.

Angle Sector Frame Reinforcement Kits

These universal sector frame reinforcement kits provide extra capacity to existing sector frames for mounting RRU's.

- Provide both vertical and horizontal reinforcement
- Large-Leg Adapter Kit available for round legs up the 12-3/4", 60° angle legs up to 12", and 90° angle legs up to 8-1/2"
- Contact us for load and engineering data

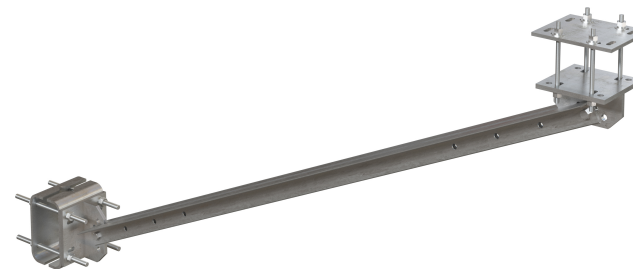


CEQ #	Part #	Stabilizer Direction	Stand-Off Distance	Weight
ANT.16456	SFR-K	Horizontal and Vertical	24" to 36"	132 lbs.
ANT.16458	SFR-K-L	Horizontal and Vertical	36" to 48"	153 lbs.
CEQ #	Part #	Name		Weight
ANT.16459	TAM-LL	Large Leg Adapter Kit for Tower Mounts & Reinforcement Kits		39 lbs.

Tower Platform Reinforcement Kit

This tower platform reinforcement kit provides extra capacity to tower platforms.

- Universal designs provide extra capacity to tower platforms or standoff arms
- Provide vertical reinforcement only
- Fit round legs 1-1/2" to 4-1/2" OD, 60° angle legs from 1-1/2" to 4-1/2", and 90° angle legs from 1-1/2" to 3"
- Fit round or square tube Stand-Off arms 1-1/2" to 5"
- Use PRK-FMA for tower platform reinforcement, PRK-FMA1 for standoff arm reinforcement



CEQ #	Part #	Sectors	Horizontal Connection	Angle Size	Weight
ANT.54744	PRK-FMA1	1	5" x 5" Max	2L 2-1/2" x 2-1/2" x 3/16" x 84"	110 lbs.

Panel Antenna Stand-Off Mounts

These versatile panel antenna mounts work on towers, monopoles, and buildings.

- Is a one-piece welded design
- Hot-dip galvanized
- Mounting hardware needs to be purchased separately



CEQ #	Part #	Stand-Off	Antenna Pipe Size	Mounting Pipe Size	Pipe Diameter	Weight
ANT.55115	PM1	1'	120"	60"	2-3/8" OD	65 lbs.
ANT.55117	PM2	2'	120"	48"	2-3/8" OD	71 lbs.
ANT.59447	PM1-278	1'	120"	60"	2-7/8" OD	100 lbs.
ANT.59460	PM2-278	2'	120"	60"	2-7/8" OD	112 lbs.

R6 Heavy-Duty Universal Pipe Mount Kit

This heavy-duty universal pipe mount kit is used for difficult tower attachments.

- Heavy-duty sliding brackets for difficult tower attachments
- Includes 4-1/2" x 72" antenna mounting pipe
- Easy taper adjustment of up to 5.7° (based on 30" spacing of brackets)
- Fits round leg sizes 1-1/2" to 9-1/2" diameter and angle sizes 3" to 6"
- Large leg adapter kits available



CEQ #	Part #	Pipe	Weight
ANT.54762	R6	4-1/2" x 72"	264 lbs.

CEQ #	Part #	Name	Weight
ANT.54763	BCAM-HDLL	BCAM™ Large Round Leg Adapter	134 lbs.
ANT.54760	BCAM-HDLL-AA	BCAM™ Large Angle Leg Adapter	131 lbs.

R5 Standard-Duty Universal Pipe Mount Kit

These standard-duty sliding brackets are used for even the most difficult tower attachments.

- R5 and R5-LL include 4-1/2" x 72" Antenna Mounting Pipe; R5-UP version includes hardware for mounting 1-1/2" to 4-1/2" OD Antenna Mounting Pipes, but no Pipe
- Easily adjustable taper up to 5.7° (based on 30" spacing of brackets)
- Kits include U-Bolts and all hardware

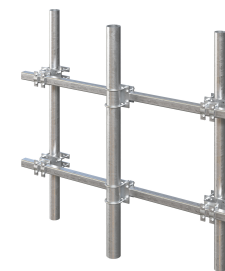


CEQ #	Part #	Pipe	Weight
ANT.56631	R5-LL	4-1/2" x 72"	250 lbs.

Universal Tubular-Arm Pipe Mounts

These universal tubular-arm pipe mounts allow transmission lines to run between the tower and mounting arms.

- For use on non-tapered tower sections
- Cross arms are 2-1/2" x 2-1/2" x 80", 3/16" (wall) square structural tubing
- 4-1/2" x 72" antenna mounting pipe included in TAP-472
- Hot-dip galvanized after fabrication
- Fit leg sizes 7/8" to 5"



CEQ #	Part #	Weight
ANT.14752	TAP-472	240 lbs.

Full Universal RRU Mount

This universal RRU mount enables the mounting of up to two remote radio units (RRU's).

- Universal design mounts 2 RRU's up to 20" wide
- Adjustable width from 0" to 8-1/2"
- Universal mounting, round legs from 2-3/8" to 8", 60° angle legs from 2-1/2" to 8", and 90° angle legs from 2" to 6"
- Large-leg adapter kit available for up to 12-3/4" diameter or 3" to 8" angles
- Easy installation

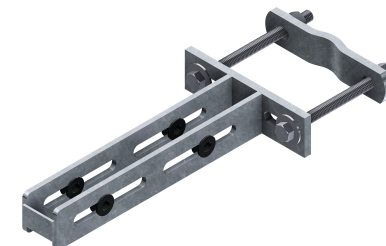


CEQ #	Part #	Weight
ANT.57080	RRU-FU2	51 lbs.

TMA Bracket

This TMA bracket is used for mounting tower mounted amplifiers.

- Includes universal mounting hardware for 2-3/8" to 4-1/2" OD legs
- Galvanized steel bracket with rubber grommets to avoid PIM issues with dissimilar metals

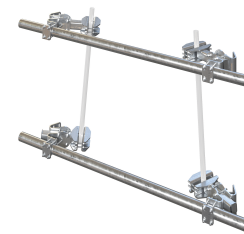


CEQ #	Part #	Weight
ANT.47480	PB-TMA-K	7 lbs.

Universal Face Pipe Mount Assembly

These universal mounts are designed for even the most difficult face mount applications.

- Easily adjustable taper up to 8° (based on 60" spacing of brackets)
- Work with face pipes 2-7/8", 3-1/2", or 4-1/2" OD
- Attach to 1-1/2" to 9-1/2" round members or 3" to 6" angles
- Add FACE-LLEG for larger leg sizes (round legs 9-1/2" to 16" dia, 90° angle legs 6" to 11", or truss legs up to 12")
- Four FACE-LLEG required for FACE-ASY1



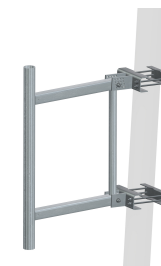
CEQ #	Part #	Sectors	Face Pipes	Weight
ANT.54768	FACE-ASY1-30126	One	(2) 2-7/8" x 10'-6"	660 lbs.
ANT.54745	FACE-ASY1-3126	One	(2) 3-1/2" x 10'-6"	690 lbs.
ANT.54765	FACE-ASY1-4126	One	(2) 4-1/2" x 10'-6"	755 lbs.

CEQ #	Part #	Name	Weight
	FACE-LLEG	Large Leg Adapter Kit	76 lbs.
ANT.54747	FACE-PM	Pipe Mount Attachment Kit	52 lbs.

Ultimate Stand-Off Frame

These ultimate stand-off frames include universal mounting hardware to fit most tower applications.

- Stand-off Frames with 3-1/2" OD x 56-1/2" vertical mast.
- Includes universal mounting hardware.
- Easily adjust for taper up to 6° in 3/4° increments.
- Universal mounting; round legs from 1" to 8", 60° angle legs from 1-1/2" to 8", and 90° angles 1-1/2" to 6".
- Large-Leg Adapter Kit available for round legs up to 12-3/4", 60° angle legs up to 12", and 90° angles up to 8-1/2".



CEQ #	Part #	Stand-Off	Weight
ANT.55114	USF-2U	24"	125 lbs.
ANT.55118	USF-3U	36"	142 lbs.
ANT.55116	USF-4U	45"	165 lbs.

CEQ #	Part #	Name	Weight
ANT.16459	TAM-LL	Large Leg Adapter Kit for Tower Mounts & Reinforcement Kits	39 lbs.

V-Frame Pipe Mount Kit

This kit provides an additional attachment point on sector frames for RRUs while providing increased RF performance.

- Attaches from 2-3/8" - 4-1/2" OD Pipe
- Attaches to BCAM-HD and BCAM-SD (Sold Separately)
- Enhanced RF Performance



CEQ #	Part #	Weight
ANT.59488	VPM-K	21 lbs.



Universal Cable Support Clamp Kit

This product provides a robust face mounting solution for cable support on self-supporting and guyed towers.

- Can be used as a tie-back point
- Pipe or angle sold separately
- 1,350 lbs. weight capacity with a 10' span



CEQ #	Part #	Leg Size	Weight
ANT.59925	CSC-U	2-3/8" - 8-5/8" Round	54 lbs.

V-Clamp™ Series Tower Leg Hangers

These tower leg hanger brackets are used for cabling support and made from galvanized steel.

- Fits 1.9" to 4.5" Dia. Round Legs
- Fits 2" to 3.5" 90 deg. Angle Legs
- Accepts 1/4" Shackles (Included in some kits)
- 2,400 lb vertical factored dead load per tab

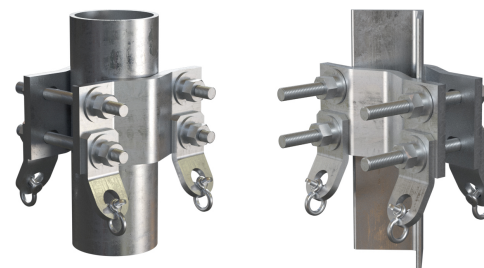


CEQ #	Part #	# of Tabs	# of Shackles	Weight
ANT.59981	CHB-DCP2	2	2	9 lbs.
ANT.59919	CHB-DCP4	4	4	11 lbs.

Wide V-Clamp™ Series Tower Leg Hangers

These tower leg hanger brackets are used for cabling support and made from galvanized steel.

- Fits 1.9" to 4.5" Dia. Round Legs
- Fits 2" to 3.5" 90 deg. Angle Legs
- Accepts 1/4" Shackles (Included in some kits)
- 2,400 lb vertical factored dead load per tab



CEQ #	Part #	# of Tabs	# of Shackles	Weight
ANT.59962	CHB-DVC2	2	2	18 lbs.
ANT.59956	CHB-DVC4	4	4	20 lbs.

Sector Frame Stiff Arm Kits

These sliding pipe tie-back assemblies are used to stabilize sector frames.

- Attachment kit for round or angle towers
- Leg bracket fits round legs from 1" to 6" OD, 60°, angle legs up to 6", and 90° angle legs up to 4".
- Sector frame attachment hardware fits 2-3/8" pipe.

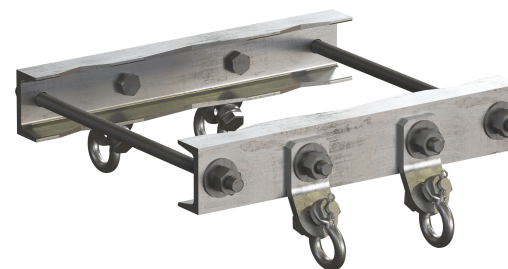


CEQ #	Part #	Pipe	Weight
ANT.54754	STK-U	2-3/8" x 12'-6" stiff arm	56 lbs.

Tower Leg Cable Support Brackets

These tower leg hanger brackets provide reliable cable support for large legs and are constructed from galvanized steel channel.

- Compatible with 2.375"-12" OD and PiRod Truss Leg #12BD
- Available with 2 or 4 shackles
- Load capacity of 4,000 lbs



CEQ #	Part #	Shackles	Weight
ANT.59975	CHB-LL2	2	27 lbs.
ANT.59911	CHB-LL4	4	32 lbs.

Universal Sliding Pipe Stiff Arm Assemblies

These sliding pipe tie-back assemblies are used to stabilize sector frames.

- Includes with 2-3/8" by 10'-6" pipe
- Leg bracket fits round legs from 1-1/2" to 8-5/8" OD, 60° angle legs up to 8", and 90° angle legs up to 6"
- Universal sector frame attachment hardware fits 1-1/2" to 5" OD

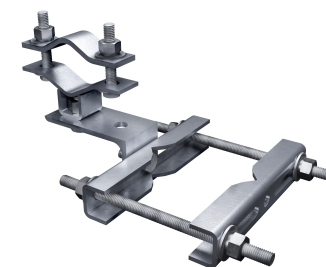


CEQ #	Part #	Weight
ANT.51650	SPTB	89 lbs.
ANT.55962	SPTB278	113 lbs.

Universal Stiff Arm Leg Attachment Kits

This versatile kit provides a stiff arm attachment point to a wide range of tower legs.

- Pivoting design for ease of installation in even the most difficult applications
- Attach to round or angle members
- All hardware included

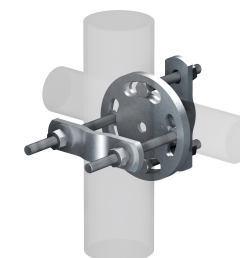


CEQ #	Part #	Application	Stiff Arm Size	Weight
ANT.14750	SAM-U	1" to 6" Round, 1" to 6" 60° Angles, 1" to 4" 90° Angles	2-3/8" OD	9 lbs.

Adjustable Clamp Plate Assembly

This clamp plate is adjustable to enable stiff arm attachment in difficult applications.

- Drop-forged design for increased strength and durability
- Hot-dip galvanized
- All hardware included
- Angle adjusts from 40° to 140°



CEQ #	Part #	Application	Weight
ANT.54758	PUCK	7/8" to 3-1/2" OD	6 lbs.

BCAM™ Large Leg Adapter Kits

This kit enables the attachment of the BCAM™ taper adjustment system to larger legs.

- AA versions attach to 7" to 12" 90° angle legs or #12 breakdown legs
- Non-AA versions attach to #12 breakdown legs



CEQ #	Part #	Attaches to	Weight
ANT.54763	BCAM-HDLL	#12 breakdown legs	134 lbs.
ANT.54760	BCAM-HDLL-AA	7" to 12" 90° angle legs or #12 breakdown legs	131 lbs.

Large Leg Adapter Kit for Tower Mounts & Reinforcement Kits

This kit enables the attachment of tower mounts and reinforcement kits to larger legs.

- Attaches to round legs up to 12-3/4", 60° angle legs up to 12", and 90° angle legs up to 8-1/2".



CEQ #	Part #	Weight
ANT.16459	TAM-LL	39 lbs.

Microwave Ice Shields

These ice shields help prevent antenna damage from falling ice.

- Protect antennas from falling ice
- Mount to 4-1/2" pipe mount used for dish; 8' and 10' ice shields require separate 4-1/2" OD pipe mounts
- Kits include ice shield and mounting hardware, do not include pipe mount
- Other sizes available

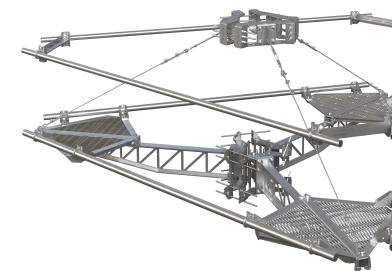


CEQ #	Part #	Antenna Diameter	Size	Weight
ANT.57347	ISMD4	4'	48" x 62"	312 lbs.
MIC.11049	ISMD6	6'	72" x 62"	334 lbs.

Fortress FlexMax™ Tri-Platform Mounts (NPNH Edition)

With its unmatched strength and innovative engineering, the Fortress FlexMax™ stands as the most robust and technically advanced monopole platform we have ever built. Its patent-pending technology conforms to the unique shape of a polygonal monopole, significantly reducing localized stress and enhancing structural integrity.

- Unprecedented strength, uniquely designed to handle heavier, modern equipment loads with ease
- Reduces localized stress and pole damage for improved structural integrity with the included FLX Series™ Ring Mount
- Welded design requires minimal hardware; all hardware is 5/8" to further simplify assembly
- Collar is constructed as a single weldment, offering higher D/t values for long-term reliability.
- Low EPA
- Contact us for load and engineering data



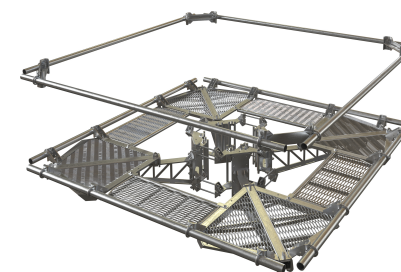
CEQ #	Part #	Pole Diameter	Pole Circumference	Face Width	Weight
ANT.59948	FX3P10-NPNH	12" - 36"	37.7" - 113.0"	10'	1838 lbs.
ANT.59932	FX3P12-NPNH	12" - 44"	37.7" - 138.0"	12'	1902 lbs.
ANT.59989	FX3P14-NPNH	12" - 44"	37.7" - 138.0"	14'	2459 lbs.

CEQ #	Part #	Name	Pole Size	Weight
ANT.59963	FLX-ADK	FLX Series™ Large Leg Adapter Kit	45" - 60"	96 lbs.

Fortress FlexMax™ Quad-Platform Mounts (NPNH Edition)

With its unmatched strength and innovative engineering, the Fortress FlexMax™ stands as the most robust and technically advanced monopole platform we have ever built. Its patent-pending technology conforms to the unique shape of a polygonal monopole, significantly reducing localized stress and enhancing structural integrity.

- Unprecedented strength, uniquely designed to handle heavier, modern equipment loads with ease
- Reduces localized stress and pole damage for improved structural integrity with the included FLX Series™ Ring Mount
- Welded design requires minimal hardware; all hardware is 5/8" to further simplify assembly
- Collar is constructed as a single weldment, offering higher D/t values for long-term reliability.
- Low EPA
- Contact us for load and engineering data

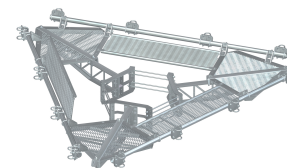


CEQ #	Part #	Pole Diameter	Pole Circumference	Face Width	Weight
ANT.59996	FX4P10-NPNH	12" - 36"	37.7" - 113.0"	10'	2417 lbs.
ANT.59952	FX4P12-NPNH	12" - 42"	37.7" - 132.0"	12'	2503 lbs.
ANT.59979	FX4P14-NPNH	12" - 60"	37.7" - 188.5"	14'	2770 lbs.

Fortress™ Tri-Platform Mounts

With its unprecedented strength and engineering ingenuity, the Fortress™ is the most robust monopole platform we have ever built. Its unique truss design makes it three times stronger than ordinary platform mounts.

- Eliminates the need for a second ring mount and reinforcement kit
- Low EPA
- Hinged grating sections allow easy access to walkway
- Flush walkway and lack of sharp edges make this platform safer for climbers
- Welded design requires minimal hardware; all hardware is 5/8" to further simplify assembly
- Kits include hardware to mount up to twelve 2-3/8" or 2-7/8" antenna mounting pipes
- Non-grating versions of the Fortress™ platform are also available
- Contact us for load and engineering data

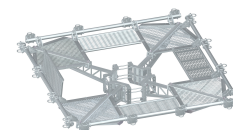


CEQ #	Part #	Pole Diameter	Pole Circumference	Face Width	Weight
ANT.56698	F3P-12W	12" - 45"	37.7" - 141.3"	12' - 6"	2122 lbs.

CEQ #	Part #	Name	Weight
ANT.55979	RM-ADK	Large-Pole Adapter Kit (45" to 60" Pole Diameter)	102 lbs.
CEQ.53336	F3P-HRK10	Handrail Kit for Fortress™ Tri-Platform Mounts	391 lbs.
CEQ.53318	F3P-HRK12	Handrail Kit for Fortress™ Tri-Platform Mounts	405 lbs.
ANT.59907	F3P-HRK14	Handrail Kit for Fortress™ Tri-Platform Mounts	415 lbs.
ANT.46145	CRK-DC3	Cable Platform Reinforcement Kit (12" - 45" Pole Diameter)	350 lbs.
ANT.59929	F3P-PRK	Tri-Platform Angle Reinforcement Kit	470 lbs.

Fortress™ Quad-Platform Mounts

In addition to the tri-platform design, we also offer a four-sector version that provides expanded mounting capacity while maintaining the same industry-leading strength, stability, and ease of installation.



CEQ #	Part #	Pole Diameter	Pole Circumference	Face Width	Weight
ANT.56874	F4P-12W	12" - 60"	37.7" - 188.4"	12' - 6"	2777 lbs.

CEQ #	Part #	Name	Weight
ANT.59943	F4P-HRK10	Handrail Kit for Fortress™ Quad-Platform Mounts	480 lbs.
CEQ.53327	F4P-HRK12	Handrail Kit for Fortress™ Quad-Platform Mounts	507 lbs.
ANT.59947	F4P-HRK14	Handrail Kit for Fortress™ Quad-Platform Mounts	550 lbs.
ANT.46135	CRK-DC4	Cable Platform Reinforcement Kit (12" - 60" Pole Diameter)	409 lbs.
ANT.59990	F4P-PRK	Quad-Platform Angle Reinforcement Kit	633 lbs.

Fortress™ RRU Mounting Kit

This kit provides additional mounting area for RRU's on Fortress™ monopole platforms.

- Attach to Fortress™ truss arms or square tube arms up to 4"
- 2-7/8" OD pipe mast

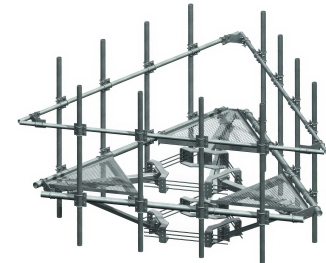


CEQ #	Part #	Description	Weight
ANT.58538	SAMAST-3	3' Platform RRU Mount	29 lbs.
ANT.58537	SAMAST-6	6' Platform RRU Mount	45 lbs.

RMQP Series™ Low-Profile Platforms (12 Antennas & RRU's)

Low-profile platform kit for 12" - 38" diameter poles, supports multiple RRU's plus twelve antennas.

- Second ring mount below adds additional support
- Integral handrails provide added strength, easy antenna/RRU mounting and added worker safety
- Complete kit includes two ring mounts, three support arms, one platform reinforcement kit, handrail kit, grating, antenna mounting pipes and all hardware
- Contact us for load and engineering data

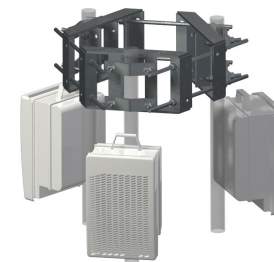


CEQ #	Part #	Pole Diameter	Pole Circumference	Face Width	Mounting Pipes	Weight
ANT.55229	RMQLP-4126-HK	12" - 38"	37.7" - 119.3"	14'-6"	(12) 2-3/8" x 126"	2600 lbs.

RRU Ring Mount Kit

This kit enables the mounting of up to 6 RRU's.

- Low profile design reduces wind load
- Accepts 1-1/2" to 4-1/2" mounting pipes



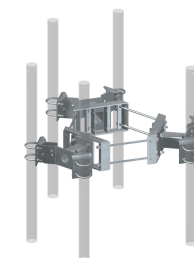
CEQ #	Part #	Size Range	Weight
ANT.46630	UGLM-DCP	10-1/2" - 28"	113 lbs.

CEQ #	Part #	Name	Pole Sizes	Weight
ANT.56836	LP-6	Small-Pole Adapter Kit for Lightweight Ring Mounts	6-5/8" - 10-1/2"	34 lbs.

Compact Mount Kit

This 3-sector T-arm kit enables the mounting of up to 2 antennas per sector.

- Antenna mounting pipes stand 14-1/2" off pole
- Antenna separation is 21-5/8"
- 0° - 30° down-tilt adjustment
- Accepts 2-3/8" OD, 2-7/8" OD, and 3-1/2" OD antenna mounting pipes
- Purchase antenna mounting pipes separately



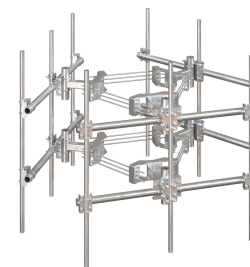
CEQ #	Part #	Pole Diameter	Weight
ANT.56837	UWS6-NP	10-1/2" - 28"	320 lbs.

CEQ #	Part #	Name	Pole Sizes	Weight
ANT.56836	LP-6	Small-Pole Adapter Kit for Lightweight Ring Mounts	6-5/8" - 10-1/2"	34 lbs.

Monopole Dual-Level Triple T-Arm Kit

This 3-sector T-arm kit enables the mounting of up to 2 antennas per sector.

- Includes ring mounts, support arms, crossarms, antenna mounting pipes and hardware
- NP versions require antenna pipe mounting hardware
- Contact us for load and engineering data

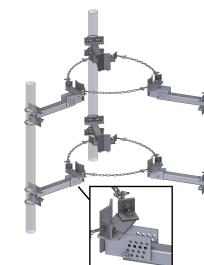


CEQ #	Part #	Pole Diameter	Standoff Length	Mounting Pipes	Face	Weight
ANT.54511	RMVD8-296-18	12" - 45"	18"	(9) 2-3/8" x 96"	8'	1881 lbs.
ANT.55970	RMVD12-NPNH	12" - 45"	36"	None	12'-6"	1900 lbs.
ANT.55987	RMVD10-NPNH	12" - 45"	36"	None	10'-6"	1810 lbs.
ANT.54512	RMVD8-2120-18	12" - 45"	18"	(9) 2-3/8" x 120"	8'	1937 lbs.

Taper-Adjustable Chain Mount Kit

This kit enables the chain mounting and taper adjustment of antennas or RRU's to monopoles.

- Fits polygon or round poles
- Simple taper adjustment allows for up to 6° of taper in 3/4" increments
- Includes U-bolts for mounting 2-3/8" or 4-1/2" OD pipes
- Hot-dip galvanized
- Purchase U-bolts separately if mounting 2-7/8" or 3-1/2" pipes
- Order antenna mounting pipes separately
- For longer chain lengths order GC4-PF



CEQ #	Part #	Description	Standoff	Range	Weight
ANT.57321	TCHM3	Triple Sector	1'	6-1/2" - 36"	195 lbs.

Monopole Mount Kit

This kit enables the mounting of multiple RRU's or antennas.

- Safely supports multiple RRU's or antennas
- Fits round or polygon poles from 17-1/2" to 56" diameter
- Order 2-3/8" or 2-7/8" antenna mounting pipes separately
- Contact us for load and engineering data



CEQ #	Part #	Pole Diameter	Description	Weight
ANT.46628	6CHMT	17-1/2" - 56"	Six Sector	271 lbs.

Universal Platform Handrail Kit

This kit is used to add handrails and antenna pipe support to existing platforms.

- Kit includes handrail pipes, corner brace kits, crossover plates and hardware; HD kits include addition cross brace supports
- Antenna mounting pipes sold separately

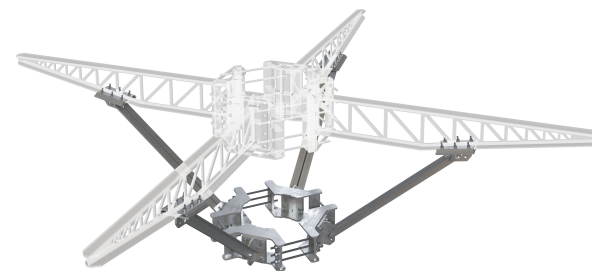


CEQ #	Part #	Face Width	Handrail Pipe Size	Antenna Mounting Pipe Size	Weight
ANT.51653	HRK12	12'-6"	2-3/8" OD x 150"	2-3/8"	228 lbs.
ANT.51647	HRK14	14'-6"	2-3/8" OD x 174"	2-3/8"	268 lbs.
ANT.51651	HRK12-HD	12'-6"	2-3/8" OD x 150"	2-3/8" or 2-7/8"	413 lbs.
ANT.51656	HRK14-HD	14'-6"	2-3/8" OD x 174"	2-3/8" or 2-7/8"	448 lbs.
ANT.51649	HRK12-3HD	12'-6"	2-7/8" OD x 150"	2-3/8" or 2-7/8"	503 lbs.
ANT.51657	HRK14-3HD	14'-6"	2-7/8" OD x 174"	2-3/8" or 2-7/8"	525 lbs.

Reinforcement Kit for Fortress™ Platforms

This kit is used to reinforce Fortress™ platforms to provide additional dead load capacity.

- Simple bolt-on reinforcement kit includes ring mount and support arms
- Fits round or polygon poles from 12" to 45" diameter, or up to 60" with the addition of the FLX-ADK large pole adapter kit
- The maximum additional vertical load capacity gained is 4,000 lb per sector arm (12,000 lb total)
- Contact us for load and engineering data

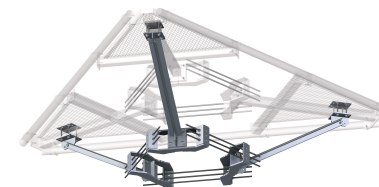


CEQ #	Part #	Pole Diameter	Horizontal Connection	Angle Size	Weight
ANT.59990	F4P-PRK	12" to 60"	1/2" Flange	2L 2-1/2" x 2-1/2" x 3/16" x 52	633 lbs.
ANT.59929	F3P-PRK	12" to 45"	1/2" Flange	2L 2-1/2" x 2-1/2" x 3/16" x 52	470 lbs.

Reinforcement Kit for Platforms or T-Arms

This kit is used to reinforce 3-sector platforms or T-arms to provide additional dead load capacity.

- Simple bolt-on reinforcement kit includes ring mount and support arms
- Fits round or polygon poles from 12" to 45" diameter, or up to 60" with the addition of the RM-ADK large pole adapter kit
- The maximum additional vertical load capacity gained is 4,000 lb per sector arm (12,000 lb total)
- PRK-1245, PRK-1245L, and PRK-NA hardware kits fit up to 4" round or square tube standoff arms
- Contact us for load and engineering data



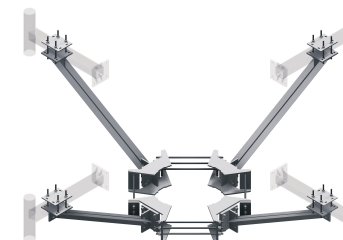
CEQ #	Part #	Description	Pole Diameter	Horizontal Connection	Angle Size	Weight
ANT.16462	PRK-1245	Reinforcement Kit	12" to 45"	4" x 4" Max	2L 2-1/2" x 2-1/2" x 3/16" x 52"	465 lbs.
ANT.16463	PRK-1245L	Long Reinforcement Kit	12" to 45"	4" x 4" Max	2L 2-1/2" x 2-1/2" x 3/16" x 84"	520 lbs.
ANT.16464	PRK-NA	Attachment Hardware Only	12" to 45"	4" x 4" Max	Order Separately	379 lbs.

CEQ #	Part #	Name	Pole Sizes	Weight
ANT.55979	RM-ADK	Large-Pole Adapter Kit (45" to 60" Pole Diameter)	45" - 60"	102 lbs.

Quad Reinforcement Kit for Platforms or T-Arms

This kit is used to reinforce 4-sector platforms or T-arms to provide additional dead load capacity.

- Simple bolt-on reinforcement kit includes ring mount and support arms
- Fits round or polygon poles from 12" to 60" diameter
- Increase platform dead load capacity up to 5,600 lb per sector
- The maximum additional vertical load capacity gained is 3,000 lb per sector arm (12,000 lb total)
- Attaching hardware fits up to 4" round or square tube standoff arms
- Contact us for load and engineering data

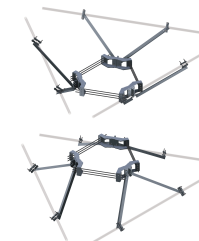


CEQ #	Part #	Description	Pole Diameter	Horizontal Connection	Angle Size	Weight
ANT.16465	PQ-1245	Reinforcement Kit	12" to 60"	4" x 4" Max	2L 2-1/2" x 2-1/2" x 3/16" x 52"	665 lbs.
ANT.16466	PQ-1245L	Long Reinforcement Kit	12" to 60"	4" x 4" Max	2L 2-1/2" x 2-1/2" x 3/16" x 84"	735 lbs.

V-Style Reinforcement Kit (Angle)

This kit is used to reinforce handrails on 3-sector platforms or T-arms.

- Provides extra rigidity to new or existing platform handrails
- Can be installed to support the handrails from above or below
- PRK-SFS and PRK-SFS-L fit round or polygon poles from 12" to 45" diameter, or up to 60" diameter with the addition of the RM-ADK large pole adapter Kit
- PQ-SFS fits round or polygon poles from 12" to 60" diameter
- Handrail connection hardware fits round members 1" to 3-1/2" OD



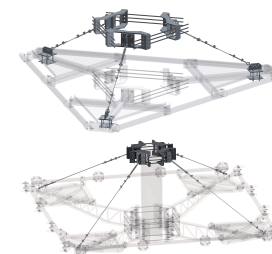
CEQ #	Part #	Description	Angle Size	Weight
ANT.16817	PRK-SFS	Handrail Reinforcement Kit	L 2-1/2" x 2-1/2" x 3/16" x 52-1/2"	588 lbs.
ANT.16818	PRK-SFS-L	Long Angle Handrail Reinforcement Kit	L 2-1/2" x 2-1/2" x 3/16" x 72"	642 lbs.

CEQ #	Part #	Name	Pole Sizes	Weight
ANT.55979	RM-ADK	Large-Pole Adapter Kit (45" to 60" Pole Diameter)	45" - 60"	102 lbs.

Cable Platform Reinforcement Kit

This cable platform reinforcement kit provides additional capacity for Fortress™ or other monopole platforms.

- Extremely low EPA
- Clamp ring mounts a minimum of 48" above the platform
- 5/16" galvanized aircraft cable
- Universal kit attaching hardware fits up to 4" square tube or round support arm
- Attach to the platform with 5/16" shackles
- CRK-DC3 and CRK-UC3 fit round or polygon poles from 12" to 45" diameter or up to 60" with the addition of the RM-ADK large pole adapter kit
- CRK-DC4 and CRK-UC4 fit round or polygon poles from 12" to 60" diameter



CEQ #	Part #	Platform Style	Pole Diameter	Horizontal Connection	Weight
ANT.46145	CRK-DC3	Fortress™ F3P	12" – 45"	4" x 4" Max	350 lbs.
ANT.46135	CRK-DC4	Fortress™ F4P	12" – 60"	4" x 4" Max	409 lbs.
ANT.51652	CRK-UC3	Universal	12" – 45"	4" x 4" Max	415 lbs.
ANT.51658	CRK-UC4	Universal	12" – 60"	4" x 4" Max	497 lbs.

CEQ #	Part #	Name	Pole Sizes	Weight
ANT.55979	RM-ADK	Large-Pole Adapter Kit (45" to 60" Pole Diameter)	45" - 60"	102 lbs.

Handrail Reinforcement Kit

This kit provides extra rigidity for existing platform handrails.

- Bracing attaches to platform standoff arms
- HSRK-35 hardware fits up to 5" round or square tube standoff arms
- HSRK-66 hardware fits up to 6" round or square tube standoff arms
- Handrail attachment hardware fits pipe handrails up to 3-1/2" OD
- Kit installation requires field cutting and drilling
- Includes bracing and attaching hardware for one corner of the platform



CEQ #	Part #	Angle Size	Weight
ANT.51655	HSRK-35	L 3" x 3" x 1/4" x 96"	142 lbs.

FLX Series™ Ring Mounts

The FLX Series™ Ring Mounts, with patent-pending VersaFlex™ Clamp Ring Technology, represent the next generation of mounting solutions, dynamically conforming to the unique shape of monopoles to significantly reduce stress, enhance structural integrity, and minimize pole damage.

- Mitigates localized stress and pole damage for improved structural integrity
- Round-on-round configuration pivots around the pole, adapting to its unique shape for a snug and secure fit
- Pivot points between rods reduce shifted loading, ensuring balanced and stable installations
- Constructed as a single weldment, offering higher D/t values for long-term reliability
- Designed to handle heavier, modern equipment loads with ease
- Contact us for load and engineering data



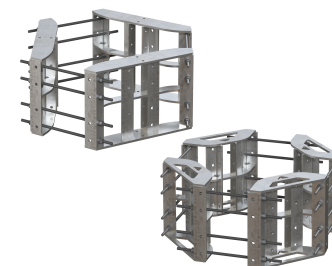
CEQ #	Part #	Sectors	Pole Sizes	Weight
ANT.59964	FLX3-SD	3-Sided	12" - 36"	281 lbs.
ANT.59987	FLX3-HD	3-Sided	12" - 44"	375 lbs.
ANT.59985	FLX4-SD	4-Sided	12" - 60"	374 lbs.
ANT.59986	FLX4-HD	4-Sided	12" - 60"	500 lbs.

CEQ #	Part #	Name	Pole Size	Weight
ANT.59963	FLX-ADK	FLX Series™ Large Leg Adapter Kit	45" - 60"	96 lbs.

Heavy-Duty Ring Mount Kit

Our most robust ring mount kits designed for the most extreme loading conditions.

- This is the ring mount used to support our Fortress™ platform mounts
- 18" overall height provides 17" contact area with the pole, reducing point loads and minimizing pole deformation
- Mounting hole pattern includes our standard 6" x 6" pattern as well as a 6" x 11-1/2" hole pattern for larger plates
- Kit include threaded rods and hardware
- Contact us for load and engineering data

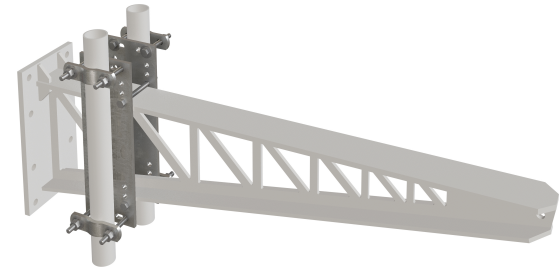


CEQ #	Part #	Pole Sizes	Weight
ANT.55963	RM3-LPK	45" - 60"	100 lbs.

Fortress™ Side Arm RRU Mounting Kit

This kit provides a simple way to add RRU's to a monopole Fortress™ standoff arm.

- Provide back-to-back pipes, useful for RRU mounting
- Uses clamp halves for universal pipe sizes
- Accepts mast pipe sizes 1.9" - 3.5" OD
- Order mounting pipes separately

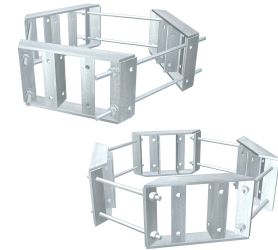


CEQ #	Part #	Description	Weight
ANT.59992	FP-BBPM	Fortress™ Side Arm RRU Mounting Kit	32 lbs.

Lightweight Ring Mount Kit

This kit is used in lightweight ring mount applications of up to two antennas per sector.

- Easy to use lightweight ring mount
- Perfect for applications using two antennas per sector
- 6" x 6" bolt pattern
- Large and small pole adapter kit also available
- Contact us for load and engineering data

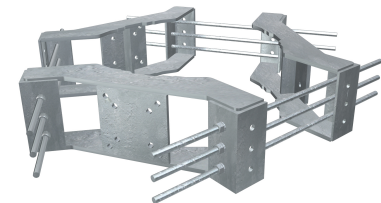


CEQ #	Part #	Pole Sizes	Weight
ANT.56836	LP-6	6-5/8" - 10-1/2"	34 lbs.

Universal Ring Mount Kit

This kit is used to attach tri-brackets and platforms to monopoles.

- Included in many of our kits, but also available separately
- Wider operating range than other brands
- Designed to stay as close as possible to the monopole, not interfering with external climbing ladders
- 6" x 6" bolt pattern
- Large-pole adapter kit available for poles larger than 45" and up to 60"
- Contact us for load and engineering data

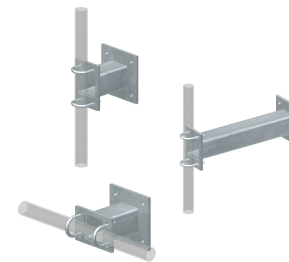


CEQ #	Part #	Pole Sizes	Weight
MIC.11440	LWRM	12" - 45"	250 lbs.
ANT.55979	RM-ADK	45" - 60"	102 lbs.

Standoff Arm Kit for Single Antennas

This kit allows the attachment of vertical pipe to ring mounts.

- Versatile 8", 24" or 36" standoff arms available
- Accepts 2-3/8", 2-7/8", or 3-1/2" pipes vertically or horizontally
- Fits our standard or lightweight ring mounts
- Includes attachment hardware
- Mounting plate is 1/2" thick by 8-1/2" square with four 11/16" holes on 6" centers
- Standoff is 4" x 3/16" square tube

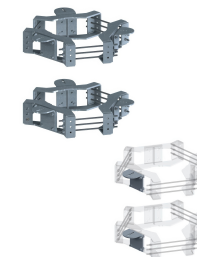


CEQ #	Part #	Description	Weight
ANT.55231	MM01	8" Support Arm	37 lbs.
ANT.55230	MM02	24" Support Arm	51 lbs.
ANT.55232	MM03	36" Support Arm	62 lbs.

Direct Frame Connection Kit

This kit enables attachment of V-Series™ Sector Frames to monopoles.

- Mounting pipes are not required
- MDFCC kit includes two ring mounts and attaching hardware for three sector frames
- Fits round or polygon poles from 12" to 45" diameter, or up to 60" with the addition of the RM-ADK large pole adapter kit
- RMBP will work with any ring mount using 5/8" bolts with a 6" x 6" hole pattern
- When ordering V-Series™ frames for use with this kit add "-NLB" to the part number to get the frame without the leg bracket hardware



CEQ #	Part #	Description	Weight
ANT.55986	MDFCC	Monopole Direct Frame Connection Kit	634 lbs.

CEQ #	Part #	Name	Pole Sizes	Weight
ANT.55979	RM-ADK	Large-Pole Adapter Kit (45" to 60" Pole Diameter)	45" - 60"	102 lbs.

Sector Frame Attachment Assembly

This allows the easy attachment of sector frames to monopoles.

- Provides 4-1/2" OD mounting pipes for attachment of sector frames
- Includes two ring mounts, 4-1/2" OD mounting pipes, and hardware

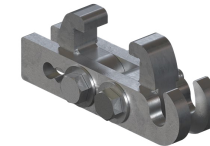


CEQ #	Part #	Description	Pole Sizes	Weight
ANT.58534	MSFAA-Q	Sector Frame Attachment Assembly (4 Sector)	12" - 60"	1105 lbs.
ANT.55965	MSFAA	Sector Frame Attachment Assembly (3 Sector)	12" - 45"	789 lbs.

PHH Series™ Port Hole Hanger

These hangers are used for cabling support as a clamp on solution.

- Hot-dip galvanized
- Fits 3", 3-1/2", 4" and 4-1/2" port rims
- 7/8" vertical clearance
- Accepts 1/4" shackles
- 1,200 lb vertical factored dead load per hanger

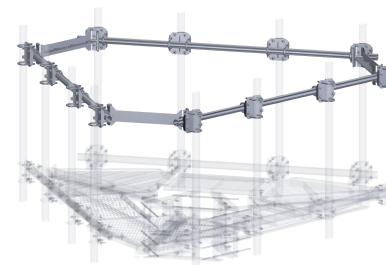


CEQ #	Part #	# of Shackles	Weight
ANT.59922	PHH-AL	0	6 lbs.
ANT.59954	PHH-AL-SP14	2	6 lbs.

Handrail Kit for Fortress™ Tri-Platform Mounts

This handrail kit provides an added safety mechanism for tower technicians.

- Enhances safety
- Enhances ease of maintenance
- Includes all hardware for attachment

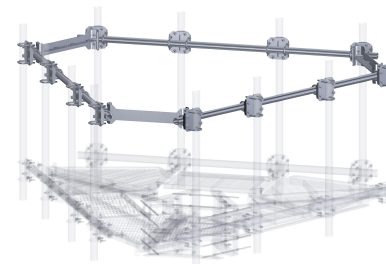


CEQ #	Part #	Description	Weight
CEQ.53336	F3P-HRK10	Handrail Kit for Fortress™ F3P-10W Platform	391 lbs.
CEQ.53318	F3P-HRK12	Handrail Kit for Fortress™ F3P-12W Platform	405 lbs.
ANT.59907	F3P-HRK14	Handrail Kit for Fortress™ F3P-14W Platform	415 lbs.

Handrail Kit for Fortress™ Quad-Platform Mounts

This handrail kit provides an added safety mechanism for tower technicians.

- Enhances safety
- Enhances ease of maintenance
- Includes all hardware for attachment

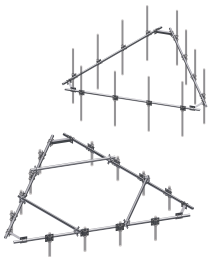


CEQ #	Part #	Description	Weight
ANT.59943	F4P-HRK10	Handrail Kit for Fortress™ F4P-10W Platform	480 lbs.
CEQ.53327	F4P-HRK12	Handrail Kit for Fortress™ F4P-12W Platform	507 lbs.
ANT.59947	F4P-HRK14	Handrail Kit for Fortress™ F4P-14W Platform	550 lbs.

Handrail Kit for Low-Profile Co-Location Platform

Universal handrail kit for RMQP platform for use with 2-3/8" or 2-7/8" antenna pipes.

- Used to add handrails and antenna pipe support to existing platforms
- Universal design, works for a variety of platforms
- Complete kit includes handrail pipes, three corner brace kits, twelve crossover plates and hardware

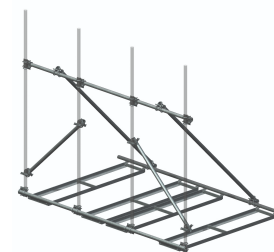


CEQ #	Part #	Description	Pipes	Weight
ANT.51648	HRK12-U	Handrail Kit for 12'-6" Face	2-3/8" and 2-7/8" Antenna Pipes	303 lbs.
ANT.51654	HRK14-U	Handrail Kit for 14'-6" Face	2-3/8" and 2-7/8" Antenna Pipes	333 lbs.

Non-Penetrating Rooftop Pipe Frames

These rooftop pipe frames are non-penetrating and easy to assemble.

- Perfect for larger loads like multiple RRU's or antennas
- Available with or without antenna mounting pipes
- Welded trays for easy assembly
- Standard kits accept 2-3" antenna mounting pipes
- For other size antenna mounting pipes purchase SCX7-U universal crossover plate kits
- If additional ballast capacity is required use ballast tray add-on kits
- Purchase rubber mats separately
- See our online assembly drawings for ballast equations at SitePro1.com

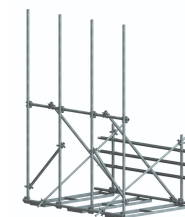


CEQ #	Part #	Face Width	Mounting Pipes	Footprint	Mats Required	Weight
ANT.52364	RTP10	10'-6"	No Pipes	92" x 126"	6	535 lbs.
ANT.52365	RTP14	14'-6"	No Pipes	92" x 174"	12	800 lbs.

Non-Penetrating Rooftop Frames with RRU Mounts

These rooftop pipe frames are non-penetrating, easy to assemble and include integral RRU mounts.

- Similar to our standard non-penetrating rooftop pipe frames, but include a rear RRU mounting frame
- Standard kits include four 2-3/8" x 174" antenna mounting pipes
- NP kits include hardware for 2-3/8" antenna mounting pipes; purchase antenna mounting pipes separately
- If using other size antenna mounting pipes purchase SCX7-U universal crossover plate kits
- Welded trays for easy assembly
- If additional ballast capacity is required use ballast tray add-on kits
- Purchase rubber mats separately
- See our online assembly drawings for ballast equations at SitePro1.com

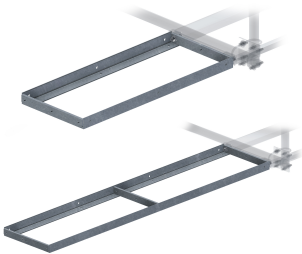


CEQ #	Part #	Face Width	Mounting Pipes	Footprint	Mats Required	Weight
CEQ.53343	RTP10-3RRU	10'-6"	(4) 2-3/8" x 174"	92" x 126"	6	1049 lbs.
CEQ.47545	RTP12-3RRU	12'-6"	(4) 2-3/8" x 174"	92" x 150"	8	1108 lbs.
CEQ.53333	RTP14-3RRU	14'-6"	(4) 2-3/8" x 174"	92" x 174"	12	1375 lbs.

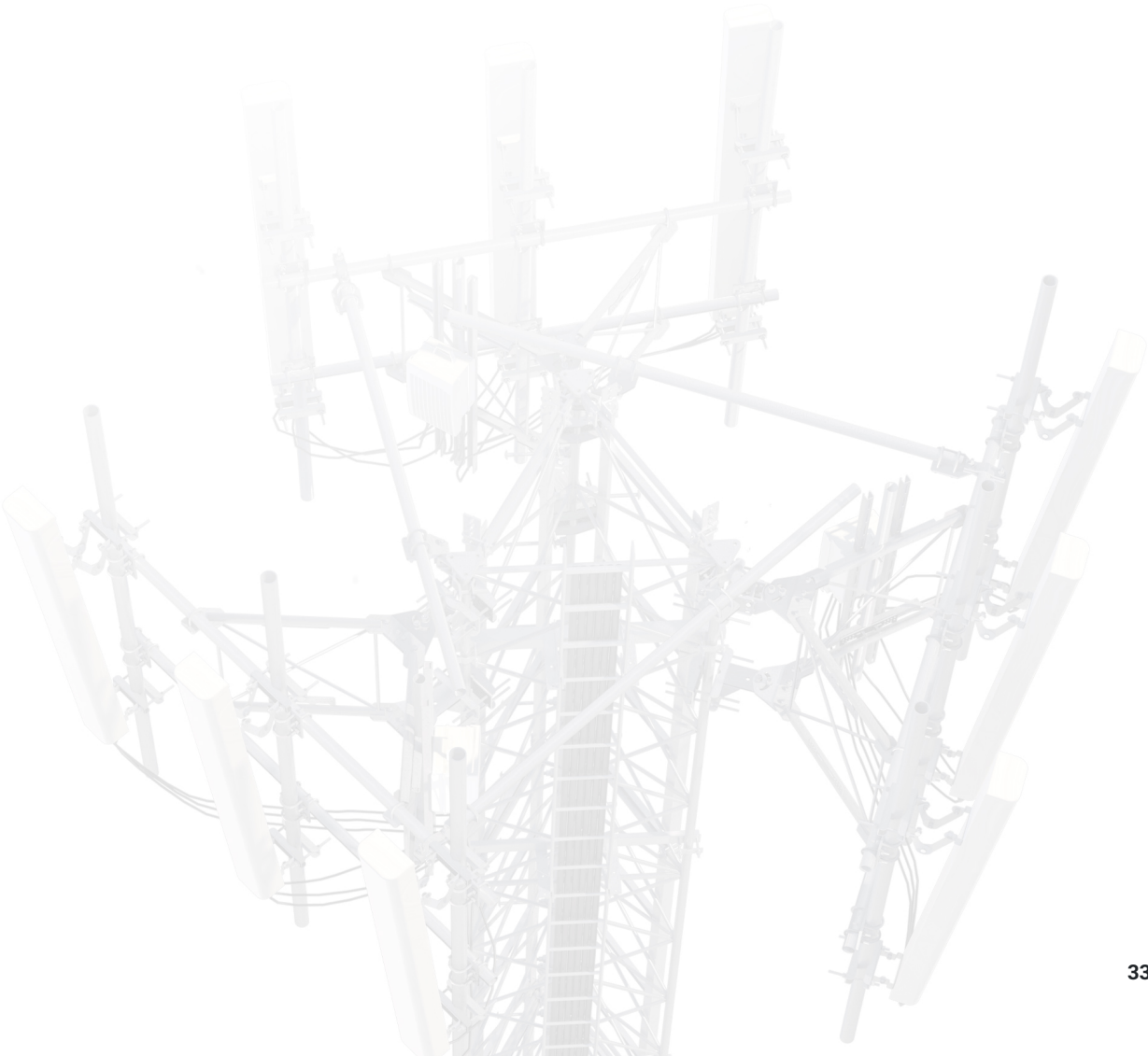
Ballast Tray Add-On Kits

These kits are used to provide additional ballast to non-penetrating rooftop mounts.

- Available in 4' and 8' versions
- Includes hardware for bolting to existing ballast trays



CEQ #	Part #	Tray Dimensions	Mats Required	Weight
ANT.56780	TA8-S	18" x 96"	2	69 lbs.



Handrail Antenna Pipe Mounting Bracket Kits

These kits provide a secure means of attaching antennas to pipe or angle handrails.

- Accepts mounting pipes 2" - 4-1/2" OD
- Kits include two brackets, U-bolts and all hardware
- Order antenna mounting pipe separately



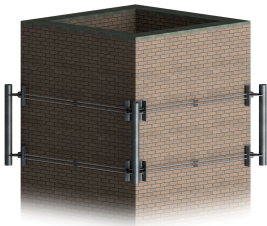
CEQ #	Part #	Mounts To	Weight
ANT.59241	HMB-AU	Angles 1" x 1" to 4" x 4" at 1/8" - 1/2" Thick	23 lbs.



Square Chimney Mount Kits

These kits enable the secure attachment of antennas and sector frames to a chimney.

- Standard kits fit chimneys with face dimensions from 3’ to 20’
- Larger sizes are available
- Kits include corner brackets with 4-1/2” diameter by 48” mounting pipes and threaded rod tensioning system
- Sector frames, standoffs, mounting pipes, etc. ordered separately



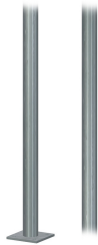
CEQ #	Part #	Chimney Face	Weight
ANT.56476	SCM34	3' to 4'	488 lbs.
ANT.56475	SCM48	4' to 8'	568 lbs.



Pipe Columns

This pipe column is used to support ice bridge kits.

- 3-1/2" OD pipes, hot-dip galvanized
- Base shoe pipes include anchors and hardware
- 8" x 8" base with 11/16" holes on 5-1/2" centers
- Purchase post caps separately

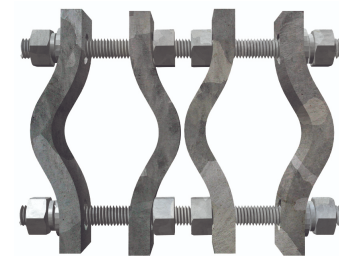


CEQ #	Part #	Type	Size	Weight
ANT.56778	P3174	Direct Burial	3-1/2" x 14'-6"	110 lbs.

Pipe-to-Pipe Clamp Sets

This clamp kit enables mounting of two pipes in a back-to-back configuration.

- Used for attaching pipes in parallel orientation
- All hardware included
- Hot-dip galvanized

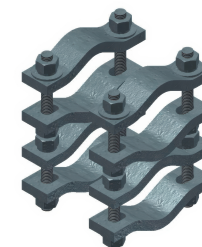


CEQ #	Part #	Pipe Size	Clamp Thickness	Threaded Rod	Kit Qty.	Weight
ANT.59936	ACP10K	1-1/2" - 3-1/2"	1/4"	1/2" x 10"	Kit of 2	9 lbs.
ANT.59984	SCP10K	1-1/2" - 3-1/2"	1/2"	1/2" x 10"	Kit of 2	12 lbs.
ANT.59951	DCP18K	1-1/2" - 5"	1/2"	5/8" x 18"	Kit of 2	26 lbs.

Welded Pipe-to-Pipe Clamp Sets

This clamp kit enables mounting of two pipes in a back-to-back configuration.

- Used for attaching pipes in parallel orientation
- All hardware included
- Hot-dip galvanized

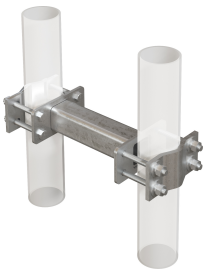


CEQ #	Part #	Pipe Size	Clamp Thickness	Threaded Rod	Kit Qty.	Weight
ANT.59912	SCP10W	1-1/2" - 3-1/2"	1/2"	1/2" x 10"	Kit of 2	12 lbs.

Heavy-Duty Standoff Pipe Clamps

These heavy-duty pipe clamps provide a robust standoff solution for mast pipes.

- Attaches to 2.375" - 4.5" O.D. members
- Allows parallel pipe to pipe connections
- Hot-dip galvanized steel construction

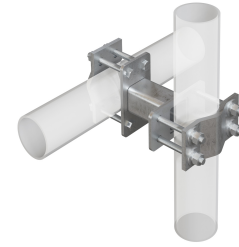


CEQ #	Part #	Standoff Distance	Round Member Size	Weight
ANT.59993	SOPTP6-U	6"	2.375" - 4.5" O.D.	28 lbs.
ANT.59978	SOPTP12-U	12"	2.375" - 4.5" O.D.	33 lbs.
ANT.59971	SOPTP24-U	24"	2.375" - 4.5" O.D.	45 lbs.

Standoff Crossover Kit

These universal standoff crossovers help offset antenna distances from their attachment points.

- Attaches to 2.375" - 4.5" O.D. members
- Allows horizontal to vertical 90 degree connection
- Hot-dip galvanized steel construction

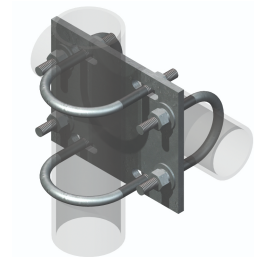


CEQ #	Part #	Standoff Distance	Round Member Size	Weight
ANT.58516	SOCX3-U	3"	2.375" - 4.5" O.D.	26 lbs.
ANT.58514	SOCX6-U	6"	2.375" - 4.5" O.D.	28 lbs.
ANT.58517	SOCX9-U	9"	2.375" - 4.5" O.D.	30 lbs.
ANT.58515	SOCX12-U	12"	2.375" - 4.5" O.D.	33 lbs.

Crossover Plate Kits

Crossover plate kits are used to attach two pipes perpendicular to each other

- Heavy-duty crossover plate kits are used to attach pipes in 90° fashion
- U-bolts and hardware are included
- Hot-dip galvanized

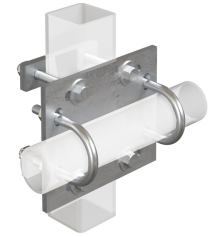


CEQ #	Part #	Smaller Pipe Size	Larger Pipe Size	Thickness	Qty.	Weight
CEQ.53317	SCX2-K	2-3/8"	2-7/8"	3/8"	1 Plate, 4 U-Bolts & Hardware	8 lbs.
ANT.55975	SCX23-K	2-7/8"	2-7/8"	3/8"	1 Plate, 4 U-Bolts & Hardware	8 lbs.
ANT.59941	SCX45-K	2-7/8"	3-1/2"	3/8"	1 Plate, 4 U-Bolts & Hardware	16 lbs.

Crossover Plate Kits for Square Tube/Pipe

These crossover plate kits are used to attach pipe and square tube perpendicular to each other

- These kits are used to attach pipe to square tube in 90° fashion
- U-bolts and hardware included
- Hot-dip galvanized



CEQ #	Part #	Pipe Size	Square Tube Size	Thickness	Quantity	Weight
ANT.59961	STCX43-K	2-3/8"	Up to 3"	3/8"	1 Plate, 2 U-Bolts, 2 Bolts & Backing Plates	12 lbs.
ANT.59972	STCX45-K	2-7/8"	Up to 3"	3/8"	1 Plate, 2 U-Bolts, 2 Bolts & Backing Plates	12 lbs.
ANT.59908	SQCX4-K	2-3/8" or 2-7/8"	4"	3/8"	1 Plate, 4 U-Bolts, 2 Square U-Bolts & Hardware	12 lbs.

Pipe/Angle Crossover Plate Kits

These crossover plate kits are used to attach pipe and angle perpendicular to each other

- Used for attaching pipe to angle in 90° fashion
- U-bolts and hardware included
- Hot-dip galvanized

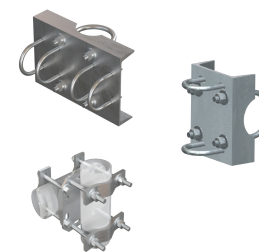


CEQ #	Part #	Angle Size	Pipe Size	Thickness	Qty.	Weight
ANT.59973	ACX238-K	3" x 3"	2-3/8"	3/8"	1 Plate, 4 U-Bolts & Hardware	10 lbs.
ANT.59933	ACX278-K	3" x 3"	2-7/8"	3/8"	1 Plate, 4 U-Bolts & Hardware	10 lbs.

Pipe Cross Support Plates

This kit provides a secure means of mounting horizontal support pipes.

- Heavy-duty saddle design prevents pipe rotation
- Hardware included
- Hot-dip galvanized

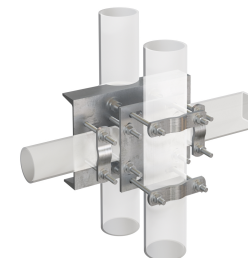


CEQ #	Part #	Smaller Pipe Size	Larger Pipe Size	Contents	Weight
ANT.56006	FCX45-U	2-3/8" - 4-1/2"	2-3/8" - 4-1/2"	1 Plate, 4 V-Clamps & Hardware	26 lbs.
ANT.55974	SP219	2-3/8"	3-1/2"	1 Bracket, 4 U-Bolts	12 lbs.
ANT.55968	SP219-H	2-7/8"	3-1/2"	1 Bracket, 4 U-Bolts	13 lbs.

Pipe/Square Tube Cross Support Plate

This kit provides a secure means of mounting pipes.

- Heavy-duty saddle attaches to 4-1/2" OD vertical pipe
- Includes hardware to support square tube or pipe up to 3-1/2"
- All hardware included

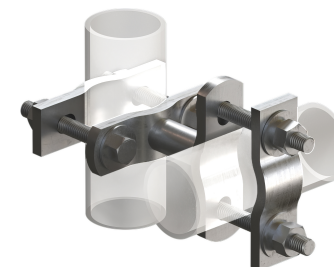


CEQ #	Part #	Smaller Pipe Size/Square Tube Size	Larger Pipe Size	Contents	Weight
ANT.55990	SP216-CK	1-1/2" to 3-1/2"	4-1/2"	1 Bracket, 1 Crossover Plate, 12 Bolts, 4 V-Clamps	45 lbs.

V-Clamp Crossover

This crossover connection provides a small 3" standoff at 90°.

- Used for attaching pipes in perpendicular orientation
- All hardware included
- Hot-dip galvanized

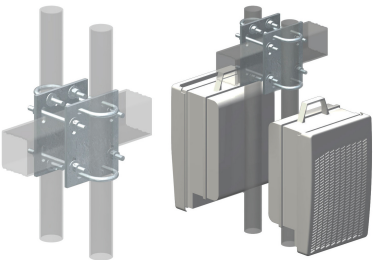


CEQ #	Part #	Pipe Size	Plate Thickness	Standoff Distance	Weight
ANT.58513	VCX1-2K	1.9" - 2.375"	3/8"	2-3/4"	6 lbs.

Back-to-Back Pipe Mount Kits

This kit provides a simple way to add RRU's to a monopole standoff arm.

- Provide back-to-back pipes, useful for RRU mounting
- BBPM-U uses clamp halves for universal pipe sizes
- Order mounting pipes separately



CEQ #	Part #	Pipe Sizes	Stand-Off Arms	Weight
ANT.58531	BBPM-K1	2-3/8"	3-1/2" - 4-1/2"	18 lbs.
ANT.58529	BBPM-K2	2-7/8"	3-1/2" - 4-1/2"	18 lbs.
ANT.56902	BBPM-K3	2-3/8"	3-1/2" - 6"	20 lbs.
ANT.58530	BBPM-U	2-3/8" - 4-1/2"	2-3/8" - 4-1/2"	25 lbs.

Bulk Pipe

This hot-dip galvanized pipe is available in a variety of sizes.

- Plain-end hot-dip galvanized pipe
- ASTM A53 Grade B Schedule 40 or Schedule 80
- Other sizes available, please inquire



CEQ #	Part #	Length	OD x Length (in)	Schedule	Weight
ANT.55982	P3120	10'-0"	3-1/2" x 120"	40	80 lbs.
ANT.55983	P296	8'-0"	2-3/8" x 96"	40	28 lbs.
ANT.55993	P2120	10'-0"	2-3/8" x 120"	40	37 lbs.
ANT.59977	P2132	11'-0"	2-3/8" x 132"	40	40 lbs.
ANT.59968	P2156	13'-0"	2-3/8" x 156"	40	207 lbs.
ANT.59944	P2180	15'-0"	2-3/8" x 180"	40	55 lbs.
ANT.55985	P3096	8'-0"	2-7/8" x 96"	40	49 lbs.
ANT.16008	P30120	10'-0"	2-7/8" x 120"	40	60 lbs.
ANT.59966	P30132	11'-0"	2-7/8" x 132"	40	68 lbs.
ANT.59965	P30156	13'-0"	2-7/8" x 156"	40	78 lbs.
ANT.59983	P30180	15'-0"	2-7/8" x 132"	40	90 lbs.
ANT.56782	P30252	21'-0"	2-7/8" x 252"	40	122 lbs.
ANT.55967	P396	8'-0"	3-1/2" x 96"	40	61 lbs.

HALO Maintenance Tie-Off Anchor

This durable anchoring system enhances worker safety by ensuring a stable and secure connection for fall protection on monopoles.

- Provides up to three tie-off anchor points for 360° access safety on monopoles
- Load rated to ANSI/OSHA standards
- Fits 12" - 40" poles



CEQ #	Part #	Application	Weight
ANT.55976	HALO40	12" - 40" Poles	63 lbs.



CEQ Index

CEQ #	Page	CEQ #	Page	CEQ #	Page	CEQ #	Page	CEQ #	Page
ANT.59449	3	CEQ.53328	5	ANT.55962	13	ANT.46628	22	CEQ.53343	32
ANT.59452	3	ANT.16459	5, 6, 15	ANT.14750	14	ANT.51653	22	CEQ.47545	32
ANT.59453	3	ANT.16460	5	ANT.54758	14	ANT.51647	22	CEQ.53333	32
ANT.59496	3	CEQ.53324	5	ANT.57347	16	ANT.51651	22	ANT.56780	33
ANT.59489	3	ANT.16461	5	MIC.11049	16	ANT.51656	22	ANT.59241	34
ANT.59495	3	CEQ.53329	5	ANT.59948	17	ANT.51649	22	ANT.56476	35
ANT.59491	3	CEQ.53338	6	ANT.59932	17	ANT.51657	22	ANT.56475	35
ANT.59456	3	CEQ.53339	6	ANT.59989	17	ANT.16462	23	ANT.56778	36
ANT.59461	3	ANT.16456	6	ANT.59963	17, 26	ANT.16463	23	ANT.59936	37
ANT.59458	3	ANT.16458	6	ANT.59996	17	ANT.16464	23	ANT.59984	37
ANT.59459	3	ANT.54744	7	ANT.59952	17	ANT.16465	24	ANT.59951	37
ANT.59446	3	ANT.55115	7	ANT.59979	17	ANT.16466	24	ANT.59912	37
ANT.59462	3	ANT.55117	7	ANT.56698	18	ANT.16817	24	ANT.59993	38
ANT.59455	3	ANT.59447	7	ANT.55979	18, 23, 27	ANT.16818	24	ANT.59978	38
ANT.59451	3	ANT.59460	7	CEQ.53336	18, 30	ANT.51652	25	ANT.59971	38
ANT.59454	3	ANT.54762	8	CEQ.53318	18, 30	ANT.51658	25	ANT.58516	39
ANT.54763	3, 4, 14	ANT.56631	8	ANT.59907	18, 30	ANT.51655	25	ANT.58514	39
ANT.54760	3, 4, 14	ANT.14752	9	ANT.46145	18, 25	ANT.59964	26	ANT.58517	39
ANT.59488	3, 4, 11	ANT.57080	9	ANT.59929	18, 23	ANT.59987	26	ANT.58515	39
ANT.57082	4	ANT.47480	9	ANT.56874	18	ANT.59985	26	CEQ.53317	39
ANT.55969	4	ANT.54768	10	ANT.59943	18, 30	ANT.59986	26	ANT.55975	39
ANT.55984	4	ANT.54745	10	CEQ.53327	18, 30	ANT.55963	26	ANT.59941	39
ANT.55981	4	ANT.54765	10	ANT.59947	18, 30	ANT.59992	27	ANT.59961	40
ANT.55995	4	ANT.54747	10	ANT.46135	18, 25	MIC.11440	27	ANT.59972	40
ANT.56004	4	ANT.55114	10	ANT.59990	18, 23	ANT.55231	28	ANT.59908	40
ANT.56002	4	ANT.55118	10	ANT.58538	19	ANT.55230	28	ANT.59973	40
ANT.55994	4	ANT.55116	10	ANT.58537	19	ANT.55232	28	ANT.59933	40
ANT.56012	4	ANT.59925	12	ANT.55229	19	ANT.55986	28	ANT.56006	41
ANT.55966	4	ANT.59981	12	ANT.46630	20	ANT.58534	29	ANT.55974	41
ANT.55991	4	ANT.59919	12	ANT.56836	20, 27	ANT.55965	29	ANT.55968	41
ANT.55988	4	ANT.59962	12	ANT.56837	20	ANT.59922	29	ANT.55990	41
ANT.55972	4	ANT.59956	12	ANT.54511	21	ANT.59954	29	ANT.58513	41
ANT.55971	4	ANT.54754	13	ANT.55970	21	ANT.51648	31	ANT.58531	42
CEQ.53331	5	ANT.59975	13	ANT.55987	21	ANT.51654	31	ANT.58529	42
CEQ.53319	5	ANT.59911	13	ANT.54512	21	ANT.52364	32	ANT.56902	42
CEQ.53321	5	ANT.51650	13	ANT.57321	21	ANT.52365	32	ANT.58530	42

CEQ Index

CEQ #	Page
ANT.55982	43
ANT.55983	43
ANT.55993	43
ANT.59977	43
ANT.59968	43
ANT.59944	43
ANT.55985	43
ANT.16008	43
ANT.59966	43
ANT.59965	43
ANT.59983	43
ANT.56782	43
ANT.55967	43
ANT.55976	44



A **valmont**  COMPANY



© 2025 Valmont Telecommunications, Inc. All rights reserved.
15000 Valmont Plaza, Omaha, NE 68154 USA

Valmont is committed to providing products and services that enhance the lives of our customers, employees, and communities and to do so in an increasingly efficient and environmentally friendly manner. For more information about our commitment to sustainability, please visit valmont.com/sustainability.

Version: ATTGG04 Updated: 03/25