



A valmont  COMPANY

Cable Support Product Guide

We're the backbone
of the wireless industry.

Providing critical infrastructure,
enhancing connectivity.

Serving wireless carriers, contractors, and integrators since 2004, we are telecom's premier manufacturer and distributor of wireless site components.

You need it fast? We've got you covered.

Our nationwide warehouses are fully stocked and strategically located around the U.S. to facilitate the immediate shipment of your order. With the addition of our latest locations, we reach 99% of the U.S. within a single day.

Quality you would expect from Valmont.

Engineered and manufactured to exacting tolerances with comprehensive quality control processes in place, our products are the best quality available anywhere. Period. We build with the contractor in mind; our parts are securely packaged, safe to use, and easy to install.

We're constantly innovating. It's part of who we are.

Our engineering and product development teams belong to all prominent telecommunication trade organizations and have a keen eye on new developments and changes to the industry. This foresight enables us to remain at the cutting edge of new developments and challenges, allowing us to provide efficient, cost-effective new technologies that solve our customers' unique challenges.

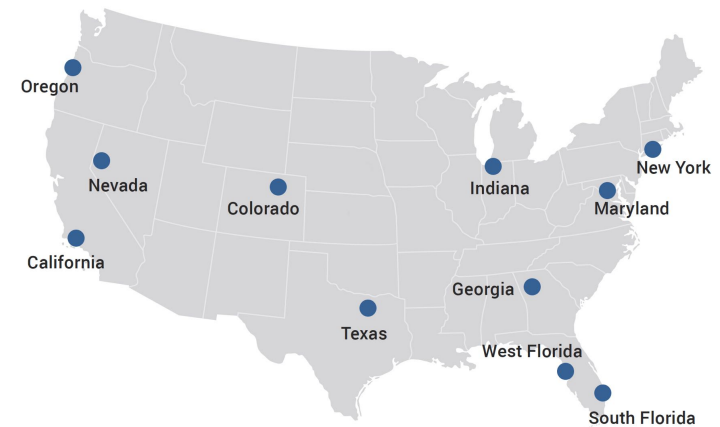
With us, you're first.

Everything we do is with our customers in mind, and providing an optimal experience is our top priority. Whether purchasing through our knowledgeable customer service team or our fast and secure website online, we guarantee that you will have a first-class experience.



A **valmont** COMPANY

Our Locations



New York

15 Oser Ave
Hauppauge, NY 11788

South Florida

33 Commerce Way
Jupiter, FL 33458

Oregon

3573 25th St SE
Salem, OR 97302

California

12661 Corral Pl
Santa Fe Springs, CA 90670

Indiana

1545 Pidco Dr
Plymouth, IN 46563

Colorado

14200 E 35th Pl, Ste 105
Aurora, CO 80111

West Florida

5122 Joanne Kearney Blvd
Tampa, FL 33619

Texas

2045 Westgate Dr, Ste 110
Carrollton, TX 75006

Maryland

8200 Stayton Drive, Ste 700
Jessup, MD 20794

Georgia

4100 Westpark Dr SW, Ste C
Atlanta, GA 30336

Nevada

960 East Greg Street, Bldg 6
Sparks, NV 89431

Valmont Telecom Locations

Indiana

Plymouth, IN

Oregon

Salem, OR

Texas

Brenham, TX

Arizona

Tucson, AZ

Colorado

Colorado Springs, CO

Company

- About Us

Inside Cover

Tower Leg Hangers

- V-Clamp™ Series Tower Leg Hangers
- Wide V-Clamp™ Series Tower Leg Hangers

3

3

Monopole Port Hangers

- PHH Series™ Port Hole Hanger

4

Anchor Brackets & Shackles

- Anchor Bracket
- Select™ Screw Pin Shackles

5

5

Hoisting Grips

- Lace-Up Hoisting Grips
- Closed Hoisting Grips

6

6

Cable Support Brackets

- TrapBox™
- 3-Way Universal PIM Standoff Adapters
- Mini Cluster Box™
- Banjo Box™
- Cluster Box™
- Multi-Function Cable Support Base
- Universal T-Bracket
- Universal T-Bracket Extension Kit
- Super Universal T-Brackets
- Super Universal Double T-Brackets
- Heavy-Duty Universal Cable Support Brackets
- Universal Round-Member Support Bracket
- PIM-Mitigating Cable Block Brackets

7

7

8

8

9

9

10

10

11

11

12

12

13

Snap-Ins

- Plastic Polymer Snap-In Hangers
- Hybrid Snap-In Hangers
- Monobloc Stackable Snap-In Hangers
- Universal Snap-In Hangers
- Stackable Snap-In Hangers
- Adjustable Stackable Snap-In Hangers
- LMR-400 Snap-In Hangers
- PIM Isolator for Snap-In Hangers

14

14

15

15

16

16

17

17

Snap-In Support

- Universal Square Rail Snap-In Support

18

Banding

- Stainless Banding
- Stainless Steel Banding
- Stainless Banding Buckles
- Heavy-Duty Banding Tool

19

19

20

20

Engineering References

- Overview

21

V-Clamp™ Series Tower Leg Hangers

These tower leg hanger brackets are used for cabling support and made from galvanized steel.

- Fits 1.9" to 4.5" Dia. Round Legs
- Fits 2" to 3.5" 90 deg. Angle Legs
- Accepts 1/4" Shackles (Included in some kits)
- 2,400 lb vertical factored dead load per tab

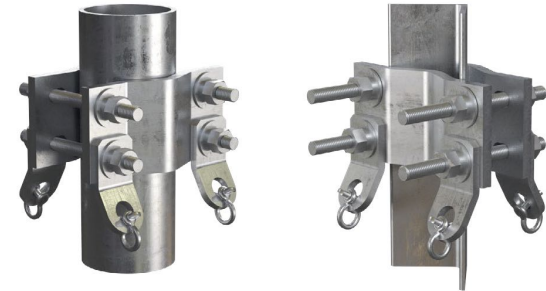


Part #	Description	# of Tabs	# of Shackles	Weight
CHB-DCP2	V-Clamp™ Series Tower Leg Hangers	2	2	8.9
CHB-DCP4	V-Clamp™ Series Tower Leg Hangers	4	4	10.8

Wide V-Clamp™ Series Tower Leg Hangers

These tower leg hanger brackets are used for cabling support and made from galvanized steel.

- Fits 1.9" to 4.5" Dia. Round Legs
- Fits 2" to 3.5" 90 deg. Angle Legs
- Accepts 1/4" Shackles (Included in some kits)
- 2,400 lb vertical factored dead load per tab



Part #	Description	# of Tabs	# of Shackles	Weight
CHB-DVC2	Wide V-Clamp™ Series Tower Leg Hangers	2	2	17.6
CHB-DVC4	Wide V-Clamp™ Series Tower Leg Hangers	4	4	19.4

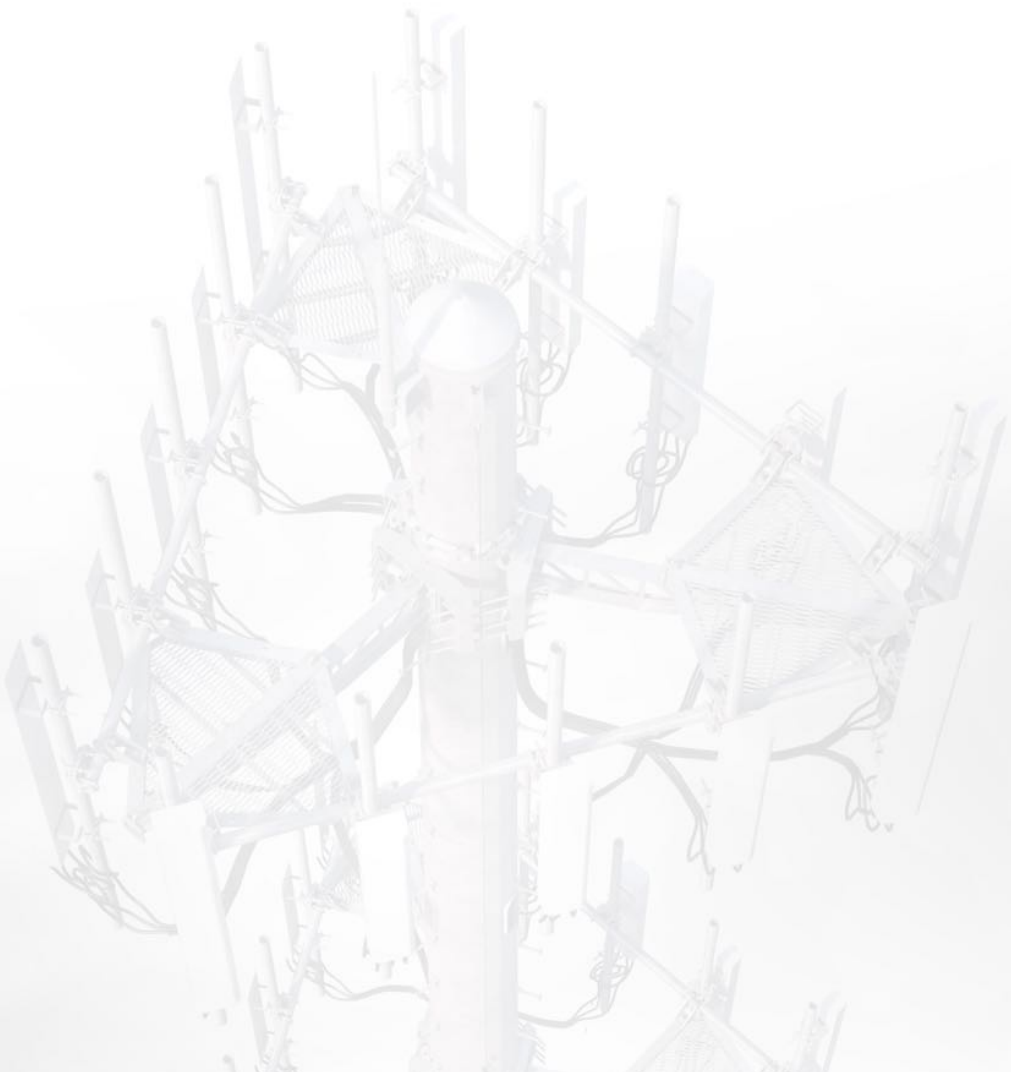
PHH Series™ Port Hole Hanger

These hangers are used for cabling support as a clamp on solution.

- Hot-dip galvanized
- Fits 3", 3-1/2", 4" and 4-1/2" port rims
- 7/8" vertical clearance
- Accepts 1/4" shackles
- 1,200 lb vertical factored dead load per hanger



Part #	Description	# of Shackles	Weight
PHH-AL	PHH Series™ Port Hole Hanger	0	6



Anchor Bracket

These anchor brackets are hot-dip galvanized for superior durability.

- A572-50 Hot-Dip Galvanized Steel Construction
- Accepts 5/8" Dia. Hardware
- Large 1" Dia. hole for hanging
- Accepts 1/4" Shackles
- 10,000 lb vertical factored dead load per tab



Part #	Description
X-TOAB-BPL	Anchor Bracket

Select™ Screw Pin Shackles

These small shackles have a variety of uses.

- Hot-dip galvanized steel construction
- Meet Federal Specifications RR-C-271G, Type IVA, Grade A, Class 2
- BUCKETS: Add "-B" to end of part #



Part #	Description	Size	U of M
SHK14	Select™ Screw Pin Shackles	1/4" (1/2 Ton)	Each

Lace-Up Hoisting Grips

Hoisting grips are used to support the weight of vertical cable runs.

- Lace-up grips allow installation after connectors are installed
- Stainless steel braided wire construction
- Our grips are longer, resulting in less stress to the cable and greater performance in resisting pull-out, flexure, and vibration



Part #	Description	Cable Size & Type	Overall Length	Mesh Length	Weight
HG12	Lace-Up Hoisting Grips	1/2" Coax & LMR-600	15"	8"	0.1
HG58	Lace-Up Hoisting Grips	5/8" Coax & LMR-900	29"	22"	0.3
HG78	Lace-Up Hoisting Grips	7/8" Coax & LMR-1200	34"	21-1/2"	0.4
HG114	Lace-Up Hoisting Grips	1-1/4" Coax & LMR-1700	40"	27"	0.4
HG158	Lace-Up Hoisting Grips	1-5/8" Coax	45"	30"	0.4
HG214	Lace-Up Hoisting Grips	2-1/4" Coax	45"	30"	0.6

Closed Hoisting Grips

Hoisting grips are used to support the weight of vertical cable runs.

- Closed style allows simplified installation, simply slip on to the cable
- Stainless steel braided wire construction
- Use at top of cable before installing connector



Part #	Description	Cable Size & Type	Overall Length	Mesh Length	Weight
HG12-C	Closed Hoisting Grips	1/2" Coax & LMR-600	18"	7"	0.1
HG38-C	Closed Hoisting Grips	LMR-400, 3/8" Flex, & RG11U	11"	6"	0.05
HG58-C	Closed Hoisting Grips	5/8" Coax & LMR-900	25"	14"	0.2
HG78-C	Closed Hoisting Grips	7/8" Coax & LMR-1200	34"	21-1/2"	0.4
HG114-C	Closed Hoisting Grips	1-1/4" Coax & LMR-1700	40"	27"	0.4
HG158-C	Closed Hoisting Grips	1-5/8" Coax	45"	30"	0.4
HG214-C	Closed Hoisting Grips	2-1/4" Coax	45"	30"	0.6

TrapBox™

This three-way bracket is used with stackable snap-in hangers to organize and support cable runs.

- 304 stainless steel trapezoid snap-in box
- For use with stackable snap-ins only
- Accepts hose clamps or 1/2" banding to attach directly to round members
- Attaches to angle adapters, tower standoff brackets, T-brackets etc. with 3/8" hardware
- If using 1-1/4" or 1-5/8" MonoBloc stackable snap-ins the center hole cannot be used (two runs only)
- Three 3/4" holes; maximum load is six 1-5/8" cables



Part #	Description	Size	Qty.	Weight
TRAP3	TrapBox™	3-1/4" x 1-1/2" x 1-1/2"	10 pack	1.1 lb

3-Way Universal PIM Standoff Adapters

This three-way PIM-mitigating bracket is used with snap-in hangers to organize and support cable runs.

- Weather-resistant nylon material
- Mount to round or flat members
- Include 3/4" and 3/8" accessory mounting holes
- Slots for 1/2" to 5/8" hose clamps, cable ties, or banding



Stand-offs sold separately.

Part #	Description	Size	Qty.	Weight
PIMTRAP	3-Way Universal PIM Standoff Adapters	3-7/16" x 2-1/8" x 1-5/8"	10 pack	1.5 lb

Mini Cluster Box™

This three-way bracket is used with snap-in hangers to organize and support cable runs.

- Attaches to angle adapters, tower standoff brackets, T-brackets, etc. with 3/8" hardware
- Accepts up to three snap-in hangers
- Hot-dip galvanized steel



Part #	Description	Size	Qty.	Weight
SNBX3	Mini Cluster Box™	2-1/2" x 2-1/2" x 2"	Each	0.6 lb

Banjo Box™

This nine-hole bracket is used with snap-in hangers to organize and support cable runs.

- Attaches to angle adapters, tower standoff brackets, T-brackets, etc. with 3/8" hardware
- Slotted holes for attachment with 1/2" or 3/4" banding
- Accepts up to nine snap-in hangers
- Hot-dip galvanized steel



Part #	Description	Size	Qty.	Weight
BJ09	Banjo Box™	10" x 5" x 2"	Each	1.7 lb

Cluster Box™

This nine-hole bracket is used with snap-in hangers to organize and support cable runs.

- Attaches to angle adapters, tower standoff brackets, T-brackets, etc. with 3/8" hardware
- Accepts up to six runs of 1-1/4" or 1-5/8" cables or nine runs of 1/2" or 7/8" cables with snap-in hangers
- Attach to round members up to 3" diameter with 1/2" U-bolt (ordered separately)
- Hot-dip galvanized steel

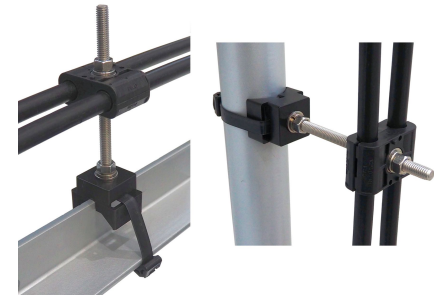


Part #	Description	Size	Qty.	Weight
SNBX6	Cluster Box™	5-1/2" x 5-1/2" x 2"	Each	1.3 lb

Multi-Function Cable Support Base

This versatile low-PIM bracket can be used in a variety of cable support applications.

- Cost efficient
- UV-stable, glass-filled nylon construction
- Mounts to angle or round members using low PIM acetal straps
- 3/8" accessory mounting hole
- 3/8" stainless steel nut included

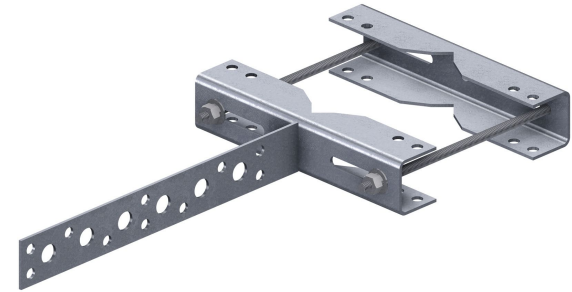


Part #	Description	Description	Qty.
901043-10	Multi-Function Cable Support Base	Multi-Function Cable Support Base	10 pack

Universal T-Bracket

This versatile low-PIM cable support bracket can be used on angle or pipe legs.

- Brackets are galvanized to avoid PIM issues with dissimilar metals
- Mounts to round legs or angle legs (60° or 90°)
- Stands 16" off tower leg and supports up to six runs of cable using snap-in hangers
- Hot-dip galvanized

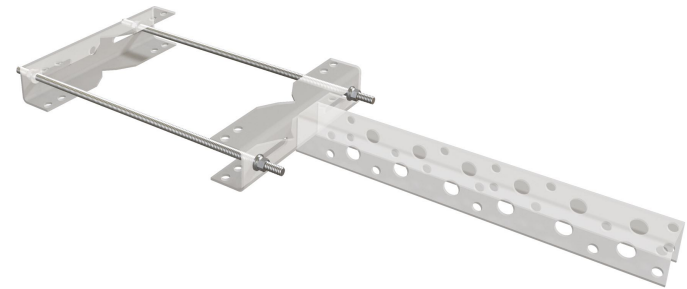


Part #	Description	# of Snap-In Holes	Round Member Size	60° Angle Legs	90° Angle Legs	Weight
T600	Universal T-Bracket	6	1-1/2" - 6"	2-1/2" - 8"	2-1/2" - 5"	6.0 lb

Universal T-Bracket Extension Kit

This kit allows T-brackets to be used on larger sized legs.

- Supports round members up to 8"
- Hot-dip galvanized

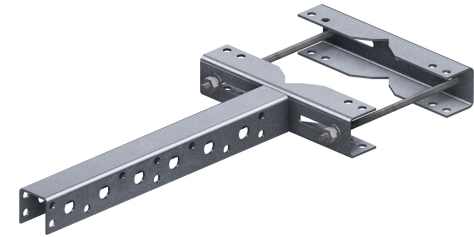


Part #	Description	Weight
T-EXT	T-Bracket Extension	1.0 lb

Super Universal T-Brackets

This versatile low-PIM cable support bracket can be used on angle or pipe legs.

- Mounts to round legs or angle legs (60° or 90°)
- T1200 stands 18" off tower leg and supports up to 12 runs of cable using snap-in hangers
- T1800 stands 26" off tower leg and supports up to 18 runs of cable using snap-in hangers
- Hot-dip galvanized

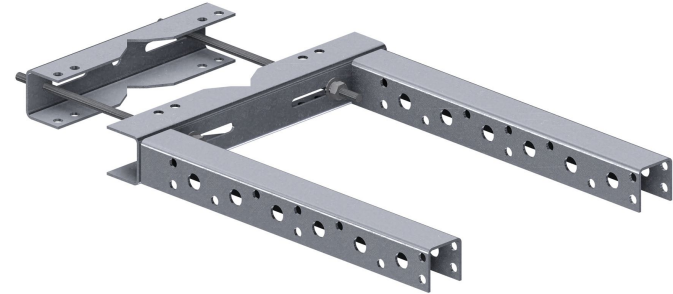


Part #	Description	# of Snap-In Holes	Round Member Size	60° Angle Legs	90° Angle Legs	Weight
T1200	Super Universal T-Brackets	12	1-1/2" - 6"	2-1/2" - 8"	2-1/2" - 5"	7.2 lb
T1800	Super Universal T-Brackets	18	1-1/2" - 6"	2-1/2" - 8"	2-1/2" - 5"	9.3 lb

Super Universal Double T-Brackets

This versatile low-PIM cable support bracket can be used on angle or pipe legs.

- Mounts to round legs or angle legs (60° or 90°)
- DBT1200 stands 18" off tower leg and supports up to 24 runs of cable using snap-in hangers
- DBT1800 stands 26" off tower leg and supports up to 36 runs of cable using snap-in hangers
- Hot-dip galvanized

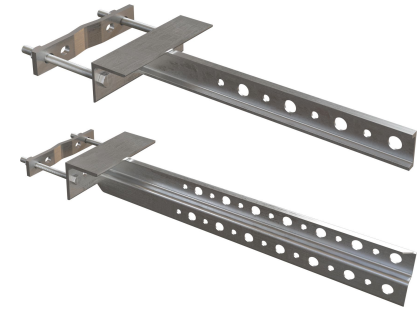


Part #	Description	# of Snap-In Holes	Round Member Size	60° Angle Legs	90° Angle Legs	Weight
DBT1200	Super Universal Double T-Brackets	24	1-1/2" - 6"	2-1/2" - 8"	2-1/2" - 5"	12.5 lb
DBT1800	Super Universal Double T-Brackets	36	1-1/2" - 6"	2-1/2" - 8"	2-1/2" - 5"	15.5 lb

Heavy-Duty Universal Cable Support Brackets

This versatile cable support bracket can be used on round legs or PiRod knock-down legs.

- Heavy-duty construction
- Mount to round legs
- Can be bolted directly to PiRod knock-down legs with included hardware
- UTL4 and UTL8 stand 17-1/2" off tower leg; UTL14 stands 26" off tower leg
- Punched with 3/4" holes for snap-in hangers and 7/16" holes for 3/8" hardware
- Hot-dip galvanized



Part #	Description	# of Snap-In Holes	Round Member Size	Weight
UTL4	Heavy-Duty Universal Cable Support Brackets	4	1-1/2" - 5-1/2"	3.1 lb
UTL8	Heavy-Duty Universal Cable Support Brackets	8	1-1/2" - 5-1/2"	10.7 lb
UTL14	Heavy-Duty Universal Cable Support Brackets	14	1-1/2" - 5-1/2"	12.2 lb

Universal Round-Member Support Bracket

This cable support brackets is used with banding for difficult large-diameter applications.

- Use on large diameter round members such as monopoles or water tower legs
- Attach with 1/2" banding or lag screws if using on a wood pole
- Punched with 3/4" holes for snap-in hangers and 7/16" holes for 3/8" hardware
- Multiple brackets can be used on the same length of banding

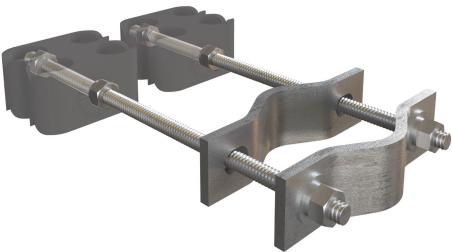


Part #	Description	# of Snap-In Holes	# of 7/16" Holes	Weight
MS6	Universal Round-Member Support Bracket	6	6	1.2 lb

PIM-Mitigating Cable Block Brackets

Use this low-PIM bracket to support vertical cable runs using cable blocks.

- For mounting cable blocks to round tower members
- Galvanized brackets and hardware
- Cable blocks purchased separately



Part #	Description		Mounting Range	Qty.
ACP-PMB	PIM-Mitigating Cable Block Brackets	Small Cable Block Bracket	1-1/2" to 3-1/2" OD	Each
DCP-PMB	PIM-Mitigating Cable Block Brackets	Large Cable Block Bracket	3-1/2" to 6-5/8" OD	Each

Plastic Polymer Snap-In Hangers

These PIM-free hangers are for use on horizontal cable runs.

- For use on horizontal cable runs only; not to be used on vertical cable runs
- PIM-free polymer material
- Self-adjusting variable diameter
- Space-saving design for tighter applications
- Use with SA1C PIM-free standoff adapters

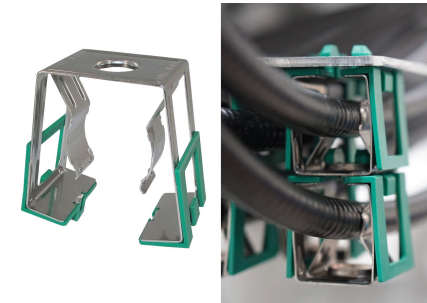


Part #	Description	Cable Size Range	AT&T Approved cables	Qty.
SICP47	Plastic Polymer Snap-In Hangers	4.0 to 7.0 mm	2 fiber jumpers and 4 fiber jumpers	10 pack
SICP710	Plastic Polymer Snap-In Hangers	7.1 to 10.0 mm	RET cables	10 pack
SICP1014	Plastic Polymer Snap-In Hangers	10.1 to 14.0 mm	12 & 10 AWG 2C power cables	10 pack
SICP1416	Plastic Polymer Snap-In Hangers	14.1 to 16.1 mm	8 AWG 2C power cables or 1/2" coax jumpers	10 pack

Hybrid Snap-In Hangers

Use these hybrid hangers to support cables in PIM-sensitive areas.

- "Hybrid" snap-in design provides insulation at the mating interfaces to prevent metal-to-metal contact
- High strength
- Easy to install, remove, and re-position
- No tools required
- 360° rotation at mounting surface

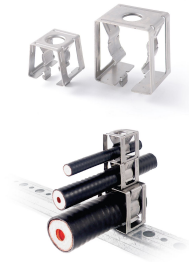


Part #	Description	Cable Size Range	Qty.
PSHS-1319-10	Hybrid Snap-In Hangers	13 to 19 mm (1/2")	10 pack
PSHS-2630-10	Hybrid Snap-In Hangers	26 to 30 mm (7/8")	10 pack
PSHS-3642-10	Hybrid Snap-In Hangers	36 to 42 mm (1-1/4")	10 pack
PSHS-4852-10	Hybrid Snap-In Hangers	48 to 52 mm (1-5/8")	10 pack

Monobloc Stackable Snap-In Hangers

These stackable snap-in hangers can be used for vertical or horizontal cable runs.

- 304 stainless steel
- One-hand instant mounting, easy-to-use inner locking bands and strong outside structure
- Heavy-duty MonoBloc design allows stacking four cables; you can even stack three 1-5/8" cables with a feeder cable on top without additional support brackets
- Excellent cable retention



Part #	Description	Cable Size	Qty.	Weight
SIC1	Monobloc Stackable Snap-In Hangers	1/2"	10 pack	0.7
SIC2	Monobloc Stackable Snap-In Hangers	7/8"	10 pack	0.7
SIC3	Monobloc Stackable Snap-In Hangers	1-1/4"	10 pack	2
SIC4	Monobloc Stackable Snap-In Hangers	1-5/8"	10 pack	1.8

Universal Snap-In Hangers

These snap-in hangers can be used for vertical or horizontal cable runs.

- 304 stainless steel
- Engineered to be strong, yet easy to use
- Excellent cable retention
- All edges are smooth so they will not cut the installer's hands



Part #	Description	Cable Size & Type	Qty.	Weight
12SH-3	Universal Snap-In Hangers	1/2" Corrugated & Commscope	10 pack	0.4
78SH-3	Universal Snap-In Hangers	7/8" Corrugated	10 pack	0.7
114SH-3	Universal Snap-In Hangers	1-1/4" Corrugated	10 pack	1
158SH-3	Universal Snap-In Hangers	1-5/8" Corrugated & Commscope	10 pack	1.2
214SH-3	Universal Snap-In Hangers	2-1/4" Corrugated	10 pack	1.5

Stackable Snap-In Hangers

These stackable snap-in hangers can be used for vertical or horizontal cable runs.

- 304 stainless steel
- For use on all corrugated cables
- Heavy-duty design prevents pop-outs
- Excellent cable retention



Part #	Description	Cable Size	Qty.	Weight
12SS-A	Stackable Snap-In Hangers	1/2"	10 pack	0.7
78SS-A	Stackable Snap-In Hangers	7/8"	10 pack	0.8
114SS-A	Stackable Snap-In Hangers	1-1/4"	10 pack	1
158SS-A	Stackable Snap-In Hangers	1-5/8"	10 pack	1.2

Adjustable Stackable Snap-In Hangers

The adjustable design of these hangers allows them to be used on a range of cable sizes.

- Range-taking design allows for use on hybrid power and coaxial cables
- Eliminate need for barrel cushions so install three times faster
- Self-adjusting variable diameter
- Stack up to three deep



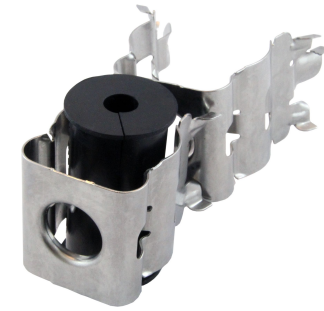
Part #	Description	Cable Size Range	Qty.	Weight
SSH-MD	Adjustable Stackable Snap-In Hangers	15 to 26 mm	10 pack	0.7
SSH-LG	Adjustable Stackable Snap-In Hangers	26 to 36 mm	10 pack	0.7
SSH-XL	Adjustable Stackable Snap-In Hangers	36 to 51 mm	10 pack	1.1

Additional sizes are available, please inquire for more information.

LMR-400 Snap-In Hangers

These snap-in hangers are for use with LMR-400, 3/8" flex, or RG11U cables.

- Standard or stackable snap-ins with EPDM rubber insert
- Accept LMR-400, 3/8" flex, & RG11U



Part #	Description	Snap-In	Qty.	Weight
400SH-K	LMR-400 Snap-In Hangers	Standard	10 pack	1.7
400SS-A	LMR-400 Snap-In Hangers	Stackable	10 pack	1.6

PIM Isolator for Snap-In Hangers

Use this isolator in PIM-sensitive areas to prevent metal-to-metal contact when using snap-in hangers.

- Reduce PIM by elimination metal-to-metal contact for snap-in hangers
- Isolator snaps between hangers and mounting surface and between stacked hangers



Part #	Description	Qty.
SA-ISO	PIM Isolator for Snap-In Hangers	10 pack

Universal Square Rail Snap-In Support

This adapter allows direct attachment of snap-in hangers to 1-5/8" strut.

- 304 stainless steel construction
- Snap into 1-5/8" wide square rail or strut
- For use with standard or stackable snap-in hangers



Part #	Description	Description	Qty.	Weight
ARA22	Universal Square Rail Snap-In Support	Square Rail Snap-In Support	10 pack	0.8 lb

Stainless Banding

Stainless banding has a myriad of uses for making attachments to large-diameter poles or tower members.

- Stainless steel banding with fully-rounded smooth edges for safety and ease of installation
- Stamped foot markers
- 100' rolls in dispenser cartons
- 0.03" thick



Part #	Description	Size	Weight
BA204	Stainless Banding	1/2" x 100'	5.2
BA206	Stainless Banding	3/4" x 100'	7.8

Stainless Steel Banding

Stainless banding has a myriad of uses for making attachments to large-diameter poles or tower members.

- Stainless steel banding with fully-rounded smooth edges for safety and ease of installation
- Stamped foot markers
- 100' rolls in dispenser totes
- 0.03" thick



Part #	Description	Size	Weight
TOTE-BA204	Stainless Steel Banding	1/2" x 100'	5.5
TOTE-BA206	Stainless Steel Banding	3/4" x 100'	8

Stainless Banding Buckles

Stainless banding has a myriad of uses for making attachments to large-diameter poles or tower members.

- The unique teeth and ears provide maximum clamping force
- Sold in convenient 25 packs
- Stainless steel construction



Part #	Description	Size	Qty.	Weight
BU254-25	Stainless Banding Buckles	1/2"	25 pack	0.6
BU256-25	Stainless Banding Buckles	3/4"	25 pack	0.8

Heavy-Duty Banding Tool

Use to provide proper tension for stainless steel banding connections.

- Able to tighten banding up to 2,400 lb
- Built-in cutter
- Spring-loaded gripper lever
- Blue epoxy finish



Part #	Description	Description	Weight
T001	Heavy-Duty Banding Tool	Heavy-Duty Banding Tool	4.2



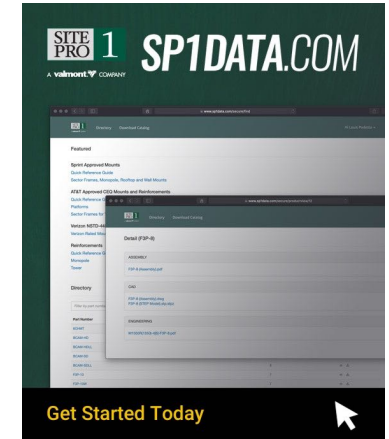
Instructions

Coming soon in the next edition of this guide is an assortment of resourceful tools to streamline your product selection experience for cable support products.



Engineering Database Resource

For those who are seeking additional documentation, such as engineering letters and other relevant materials that are crucial to your project, we direct you to our curated Architectural and Engineering (A&E) Database. This resource is an invaluable repository for professionals in the field. To gain access, we encourage you to register for an account by visiting [SP1Data.com](https://www.sp1data.com). Here, you will find a breadth of resources designed to support your engineering needs.



Questions & Additional Support

For additional engineering support or specific queries, reach out to our team at SP1Engineering@Valmont.com. Our experts are ready to provide the precise assistance and information your project requires.



A valmont  COMPANY



© 2024 Valmont Telecommunications, Inc. All rights reserved.
15000 Valmont Plaza, Omaha, NE 68154 USA

Valmont is committed to providing products and services that enhance the lives of our customers, employees, and communities and to do so in an increasingly efficient and environmentally friendly manner. For more information about our commitment to sustainability, please visit valmont.com/sustainability.

Version: CSGG01 Updated: 04/24