

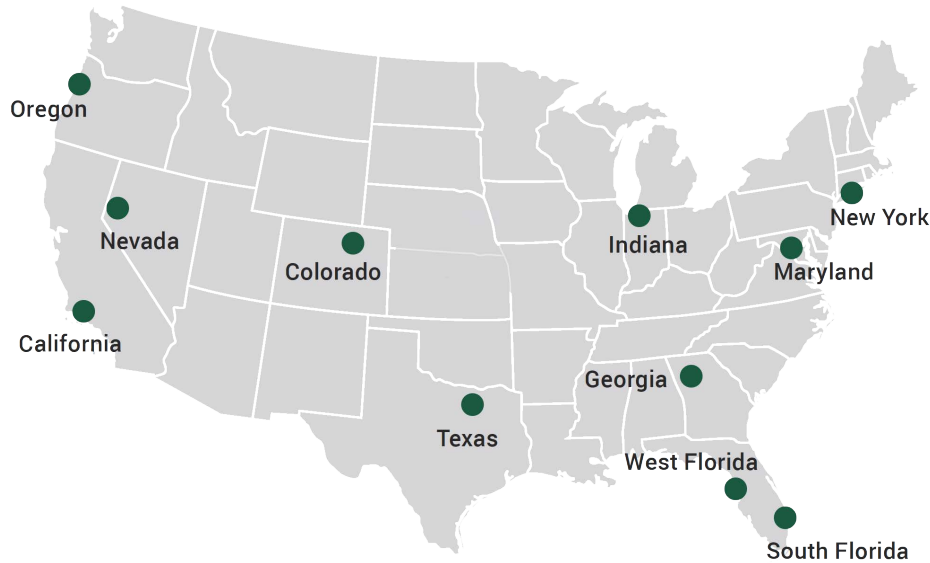


A valmont TELECOM COMPANY



T-Mobile Approved Mounts

2024



We're the backbone of the wireless industry.

Serving wireless carriers, contractors, and integrators for nearly two decades, we are telecom's premier manufacturer and distributor of wireless site components.

Our nationwide warehouses are fully stocked and strategically located around the U.S. to facilitate the immediate shipment of your order. With the addition of our latest locations, we reach 99% of the U.S. within a single day.

Everything we do is with our customers in mind, and providing an optimal experience is our top priority. Whether purchasing through our knowledgeable customer service team or our fast and secure website online, we guarantee that you will have a first-class experience.

New York

15 Oser Ave
Hauppauge, NY 11788
Ph: 1-888-438-7761

Indiana

1545 Pidco Dr
Plymouth, IN 46563
Ph: 1-888-753-7446

Oregon

3573 25th St SE
Salem, OR 97302
Ph: 1-888-880-9191

Nevada

960 E Greg St. Building 6
Sparks, NV 89431
Ph: 1-888-438-7761

Georgia

4100 Westpark Dr SW, Ste C
Atlanta, GA 30336
Ph: 1-866-901-0603

West Florida

5122 Joanne Kearney Blvd
Tampa, FL 33619
Ph: 1-844-278-6371

Texas

2045 Westgate Dr, Ste 110
Carrollton, TX 75006
Ph: 1-888-809-5151

Colorado

14200 E 35th Pl Ste 105
Aurora, CO 80011
Ph: 1-720-823-7661

California

12661 Corral Pl
Santa Fe Springs, CA 90670
Ph: 1-888-776-1937

Maryland

8200 Stayton Drive, Ste 700
Jessup, MD 20794
Ph: 1-888-438-7761

South Florida

33 Commerce Way
Jupiter, FL 33458
Ph: 1-866-781-1300

Valmont Telecom Locations

INDIANA

Plymouth, IN

TEXAS

Brenham, TX

OREGON

Salem, OR

ARIZONA

Tucson, AZ

NEBRASKA

Valley, NE

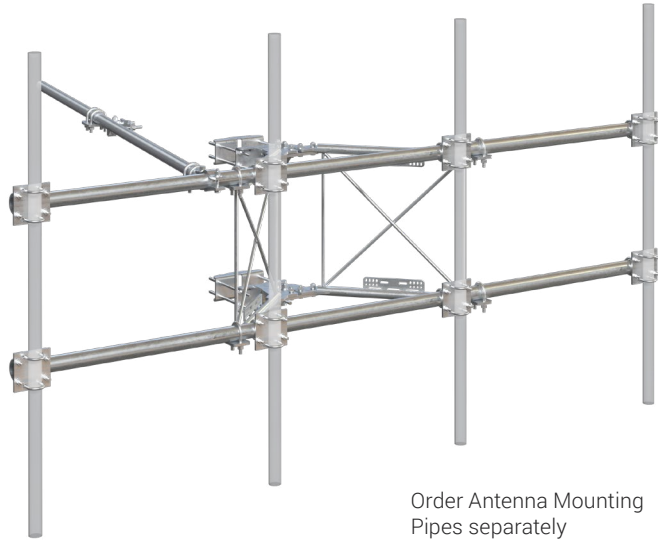
COLORADO

Colorado Springs, CO

Shop online at SitePro1.com

T-Mobile Approved V-Frames

SD V-Frame



Order Antenna Mounting Pipes separately

Description:

- Features our BCAM™ Taper Adjustment System (see below)
- Features our Quick-Plate™ for easy grounding and addition of RRU Mounting pipes or Unistrut
- Round-member face offers lower wind resistance
- Frames rotate for easy azimuth adjustment
- Includes Stiff Arm and hardware to mount 2-3/8" Antenna Mounting Pipes (ordered separately)

Features:

BCAM™ Taper Adjustment System



- Easily adjust the taper of a fully loaded frame while mounted to the tower with a battery operated impact gun by tightening or loosening one nut
- Infinitely adjustable from -2.5 to 6 degrees

Quick-Plate™ Grounding & RRU Pipe Mount

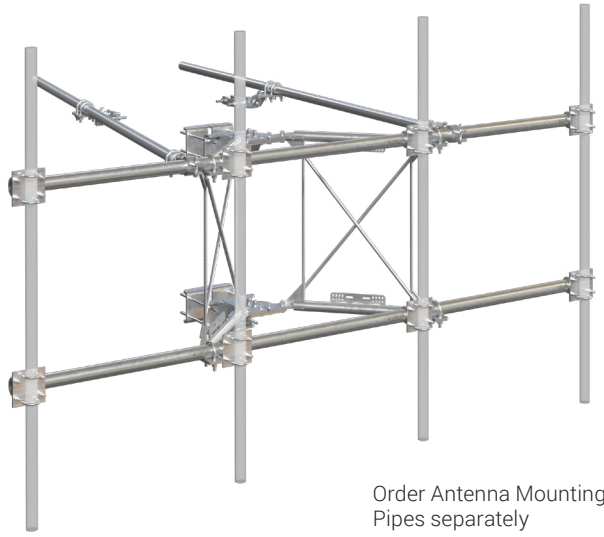


- Integrated plates accommodate up to eight lugs per plate for grounding (there are four plates per V-Frame)
- Slotted holes allow attachment of 2-3/8" - 4-1/2" OD pipes to support RRU's (Pipe and U-Bolts purchased separately)
- The 3/8" holes can also be used to attach Unistrut to the frame

Part #	Face Width	Hardware to Mount (X) Antennas	Stiff Arms	Leg Sizes	Weight
VFA6-SD-S	7'-0"	2	1	1-1/2" to 9-1/2" Round Legs and 3" to 6" Angles	360 lb
VFA6-SD	7'-0"	2	2	1-1/2" to 9-1/2" Round Legs and 3" to 6" Angles	450 lb
VFA8-SD-S	9'-0"	3	1	1-1/2" to 9-1/2" Round Legs and 3" to 6" Angles	390 lb
VFA8-SD	9'-0"	3	2	1-1/2" to 9-1/2" Round Legs and 3" to 6" Angles	480 lb
VFA10-SD-S	10'-6"	4	1	1-1/2" to 9-1/2" Round Legs and 3" to 6" Angles	415 lb
VFA10-SD	10'-6"	4	2	1-1/2" to 9-1/2" Round Legs and 3" to 6" Angles	505 lb
VFA12-SD-S	12'-6"	4	1	1-1/2" to 9-1/2" Round Legs and 3" to 6" Angles	430 lb
VFA12-SD	12'-6"	4	2	1-1/2" to 9-1/2" Round Legs and 3" to 6" Angles	520 lb
VFA14-SD-S	14'-6"	4	1	1-1/2" to 9-1/2" Round Legs and 3" to 6" Angles	445 lb
VFA14-SD	14'-6"	4	2	1-1/2" to 9-1/2" Round Legs and 3" to 6" Angles	535 lb
BCAM-SDLL	Large-Leg Adapter Kit, up to 16" Round Legs, #12 Breakdowns Legs, and 11" Angles				114 lb

T-Mobile Approved V-Frames

Heavy-Duty V-Frame



Order Antenna Mounting Pipes separately

Description:

- Our most robust Sector Frame designed for the most extreme loading conditions
- Features our BCAM™ Taper Adjustment System (see below)
- Features our Quick-Plate™ for easy grounding and addition of RRU Mounting pipes or Unistrut
- Includes Two Stiff Arms and hardware to mount 2-3/8" and 2-7/8" Antenna Mounting Pipes (ordered separately)
- Frame rotates for easy azimuth adjustment

Features:

BCAM™ Taper Adjustment System



- Easily adjust the taper of a fully loaded frame while mounted to the tower with a battery operated impact gun by tightening or loosening one nut
- Infinitely adjustable from -2.5 to 6 degrees

Quick-Plate™ Grounding & RRU Pipe Mount

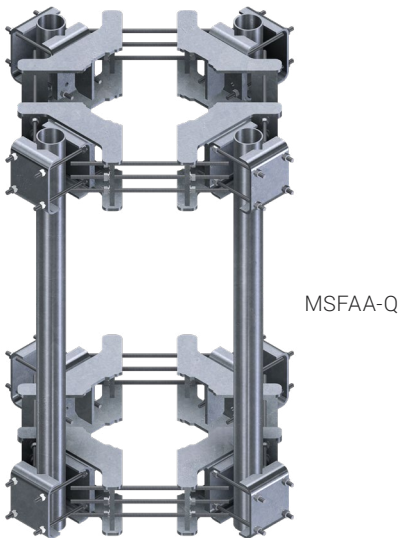


- Integrated plates accommodate up to eight lugs per plate for grounding (there are four plates per V-Frame)
- Slotted holes allow attachment of 2-3/8" - 4-1/2" OD pipes to support RRU's (Pipe and U-Bolts purchased separately)
- The 3/8" holes can also be used to attach Unistrut to the frame

Part #	Face Width	Hardware to Mount (X) Antennas	Stiff Arms	Leg Sizes	Weight
VFA6-HD-S	7'-0"	2	1	1-1/2" to 9-1/2" Round Legs and 3" to 6" Angles	540 lb
VFA6-HD	7'-0"	2	2	1-1/2" to 9-1/2" Round Legs and 3" to 6" Angles	630 lb
VFA8-HD-S	9'-0"	3	1	1-1/2" to 9-1/2" Round Legs and 3" to 6" Angles	585 lb
VFA8-HD	9'-0"	3	2	1-1/2" to 9-1/2" Round Legs and 3" to 6" Angles	675 lb
VFA10-HD-S	10'-6"	4	1	1-1/2" to 9-1/2" Round Legs and 3" to 6" Angles	630 lb
VFA10-HD	10'-6"	4	2	1-1/2" to 9-1/2" Round Legs and 3" to 6" Angles	715 lb
VFA12-HD-S	12'-6"	4	1	1-1/2" to 9-1/2" Round Legs and 3" to 6" Angles	650 lb
VFA12-HD	12'-6"	4	2	1-1/2" to 9-1/2" Round Legs and 3" to 6" Angles	735 lb
VFA12-HD-TM1	12'-6"	4	2 (150")	1-1/2" to 9-1/2" Round Legs and 3" to 6" Angles	783 lb
VFA14-HD-S	14'-6"	4	1	1-1/2" to 9-1/2" Round Legs and 3" to 6" Angles	670 lb
VFA14-HD	14'-6"	4	2	1-1/2" to 9-1/2" Round Legs and 3" to 6" Angles	755 lb
BCAM-HDLL	Large-Leg Adapter Kit, up to 16" Round Legs, #12 Breakdowns Legs, and 11" Angles				130 lb

T-Mobile Approved T-Arms

Monopole Sector Frame Attachment Assemblies



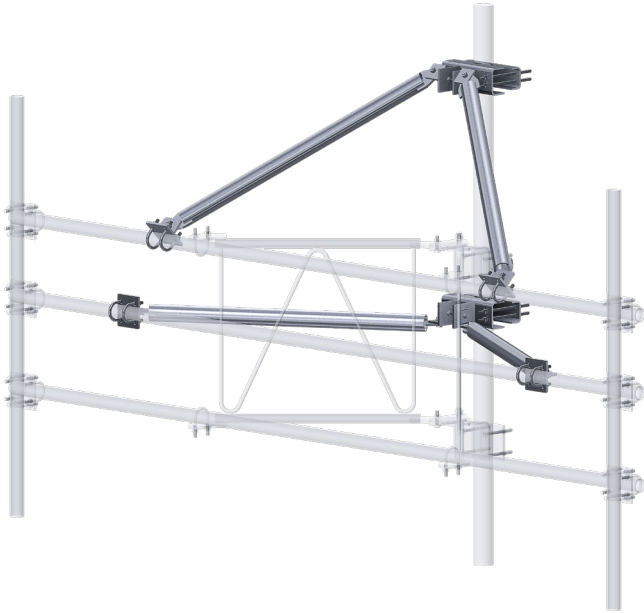
Description:

- Allow attachment of sector frames to a monopole using 4-1/2" mounting pipes
- Kits include two Ring Mounts, 4-1/2" OD Mounting Pipes, and hardware

Part #	Description	Pole Sizes	Weight
MSFAA	Sector Frame Attachment Assembly (3 sector)	12" - 45"	790 lb
MSFAA-L	Sector Frame Attachment Assembly Large (3 sector)	45" - 60"	995 lb
MSFAA-Q	Sector Frame Attachment Assembly (4 sector)	12" - 60"	1,110 lb

T-Mobile Approved Reinforcement Kits

V-Style Sector Frame Stabilizer Kits (Pipe)



Description:

- Provide additional support to existing sector frames
- Pipe bracing for reduced wind area
- Fit 2-3/8" or 2-7/8" OD crossarms
- For VSK-TH and VSK-TH-L, based on design criteria noted in capacity letter, the maximum additional normal load capacity gained is 1,050 lb, the maximum additional tangential load capacity gained is 300 lb, and the maximum additional dead load capacity is 0 lb
- For VSK-TV and VSK-TV-L, based on design criteria noted in capacity letter, the maximum additional normal load capacity gained is 0 lb, the maximum additional tangential load capacity gained is 300 lb, and the maximum additional dead load capacity is 1,500 lb
- Universal mounting; round legs from 1" to 8", 60° angle legs from 1-1/2" to 8", and 90° angles 1-1/2" to 6"
- Large-Leg Adapter Kit available for round legs up to 12-3/4", 60° angle legs up to 12", and 90° angle legs up to 8-1/2"
- Contact us for load and engineering data

Part #	Stabilizer	Application	Weight
VSK-TH	Horizontal	24" to 36" Standoff	100 lb
VSK-TH-L	Horizontal	36" to 48" Standoff	120 lb
VSK-TV	Vertical	24" to 36" Standoff	100 lb
VSK-TV-L	Vertical	36" to 48" Standoff	120 lb
TAM-LL	Large Leg Adapter Kit		39 lb

T-Mobile Approved Reinforcement Kits

V-Style Sector Frame Reinforcement Kits (Pipe)



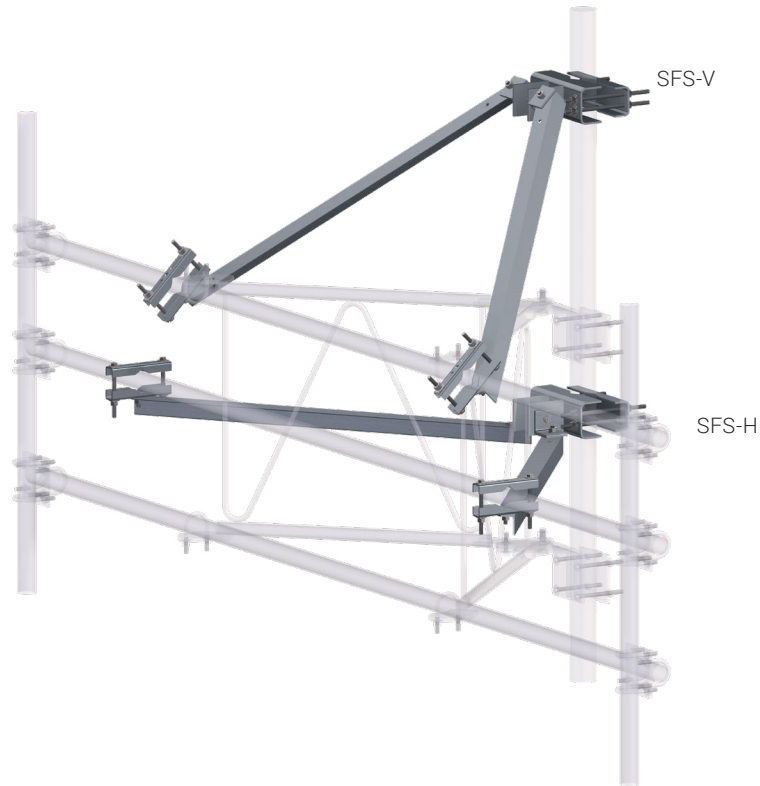
Description:

- Universal design provides extra capacity to existing sector frames for mounting RRU's
- Provide both vertical and horizontal reinforcement
- Pipe bracing for reduced wind area
- Fit 2-3/8" or 2-7/8" OD crossarms
- The maximum additional normal load capacity gained is 1,200 lb, the maximum additional tangential load capacity gained is 400 lb, and the maximum additional dead load capacity gained is 1,500 lb
- Universal mounting; round legs from 1" to 8", 60° angle legs from 1-1/2" to 8", and 90° angle legs from 1-1/2" to 6"
- Large-Leg Adapter Kit available for round legs up to 12-3/4", 60° angle legs up to 12", and 90° angle legs up to 8-1/2"
- Contact us for detailed load and engineering data

Part #	Face Width	Application	Weight
VSK-SFR	12' - 6"	24" to 36" Standoff	185 lb
VSK-SFR-L	12' - 6"	36" to 48" Standoff	205 lb
TAM-LL	Large Leg Adapter Kit		39 lb

T-Mobile Approved Reinforcement Kits

Horizontal and Vertical Reinforcement Kits



Description:

- Universal single-level Reinforcement Kits provide additional horizontal or vertical support to existing Sector Frames
- For SFS-H and SFS-H-L, based on design criteria noted in capacity letter, the maximum additional normal load capacity gained is 1,050 lb, the maximum additional tangential load capacity gained is 300 lb, and the maximum additional dead load capacity is 0 lb
- For SFS-V and SFS-V-L, based on design criteria noted in capacity letter, the maximum additional normal load capacity gained is 0 lb, the maximum additional tangential load capacity gained is 300 lb, and the maximum additional dead load capacity is 1,500 lb
- Universal mounting; round legs from 1" to 8", 60° angle legs from 1-1/2" to 8", and 90° angles 1-1/2" to 6"
- Large Leg Adapter Kit available for round legs up to 12-3/4", 60° angle legs up to 12", and 90° angle legs up to 8-1/2"
- Angle brace size is 2-1/2" x 2-1/2" x 3/16"

Part #	Stabilizer	Application	Weight
SFS-H	Horizontal	24" to 36" Standoff	66 lb
SFS-H-L	Horizontal (Long)	36" to 48" Standoff	77 lb
SFS-V	Vertical	24" to 36" Standoff	66 lb
SFS-V-L	Vertical (Long)	36" to 48" Standoff	77 lb
SFS-NA	Attachment hardware only, no angles (arms) included		38 lb
TAM-LL	Large Leg Adapter Kit		39 lb

T-Mobile Approved Reinforcement Kits

Dual-Level Reinforcement Kits



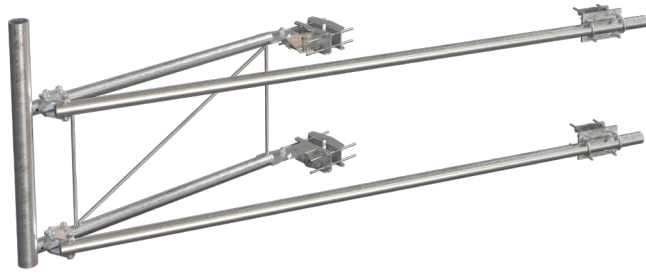
Description:

- Universal design provides extra capacity to existing Sector Frames for mounting RRU's
- Provide both vertical and horizontal reinforcement
- The maximum additional normal load capacity gained is 1,200 lb, the maximum additional tangential load capacity gained is 400 lb, and the maximum additional dead load capacity gained is 1,500 lb
- Universal mounting; round legs from 1" to 8", 60° angle legs from 1-1/2" to 8", and 90° angle legs from 1-1/2" to 6"
- Large-Leg Adapter Kit available for round legs up to 12-3/4", 60° angle legs up to 12", and 90° angles up to 8-1/2"
- Angle brace size is 2-1/2" x 2-1/2" x 3-16"

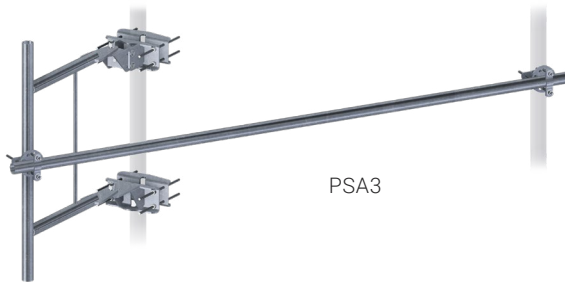
Part#	Application	Sector Quantity	Weight
SFR-K	24" to 36" Standoff	1	132 lb
SFR-K-L	36" to 48" Standoff	1	154 lb
SFR-K-3	24" to 36" Standoff	3	396 lb
SFR-K-L-3	36" to 48" Standoff	3	462 lb
TAM-LL	Large Leg Adapter Kit		39 lb

T-Mobile Approved Standoff Mounts

Bogner Mount and Standoff Mounts



BOG6



PSA3

Description:

Bogner Mount

- Heavy-duty 6' Side Arm for the most extreme loading conditions
- Features our BCAM™ Taper Adjustment System
- Mounts to 1-1/2" to 9-1/2" round and 3" to 6" angle legs; add BCAM-SDLL kit for larger members
- Mounts pivots for easy azimuth adjustment
- Includes stiff arm
- 3-1/2" x 52" Vertical mast
- Rated for 500 lb live load
- US Patent No.: US 10,316,511 B1

Standoff Mounts

- Feature our BCAM™ Taper Adjustment System
- Round-member face offers lower wind resistance
- Mount to 1-1/2" to 9-1/2" round and 3" to 6" angle legs; for larger members add the BCAM-SDLL kit
- Mounts rotate for easy azimuth adjustment
- Stiff arm included
- 2-3/8" x 50" vertical mast
- Rated for 250 lb live load
- US Patent No.: US 10,316,511 B1

Part #	Description	Weight
BOG6	6' HD Stand-Off Mount Kit	480 lb
PSA3	3' Stand-Off Mount Kit	170 lb
PSA6	6' Stand-Off Mount Kit	183 lb
BCAM-SDLL	Large-Leg Adapter Kit, up to 16" Round Legs, up to 6" 90° Angle Legs, or #12 Breakdown Legs	114 lb
BCAM-SDLL-AA	Large-Leg Adapter Kit, 7" to 12" 90° Angle Legs or #12 Breakdown Legs	115 lb

T-Mobile Approved Standoff Mounts

Heavy-Duty Stand-Off Mounts



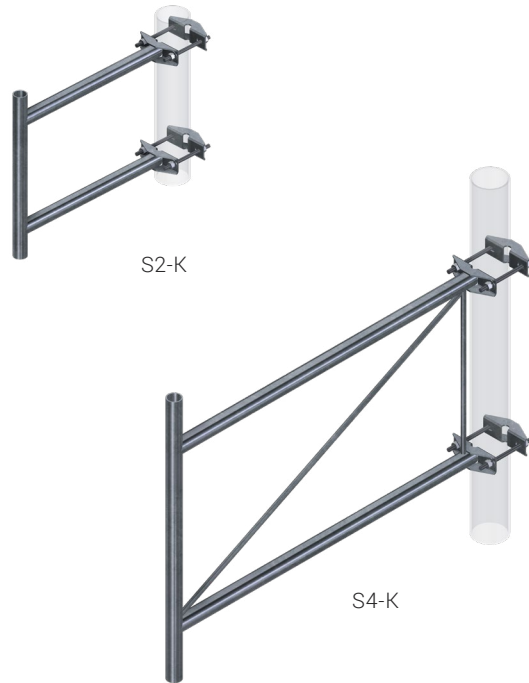
Description:

- Versatile mounts work on towers, monopoles, and buildings
- One-piece welded design
- Constructed from Schedule 40 pipe
- Standard versions mount to 1-1/2" to 4-1/2" OD members; add Large-Leg Adapter Kit for larger members
- Hot-dip galvanized
- Turning ring on HS6 allows bracket to rotate for service
- The maximum taper adjustment is 3.8 degrees based upon 45" spacing of mounting brackets.

Part #	Standoff	Mast Size	Weight
HS4-K	4'	2-3/8" x 38"	55 lb
HS6-K	6'	3-1/2" x 42-1/2"	115 lb
LLEG-K	4-3/4" to 10-3/4" Diameter & 3" to 8" Angles		78 lb

T-Mobile Approved Standoff Mounts

Lightweight Stand-Off Mounts

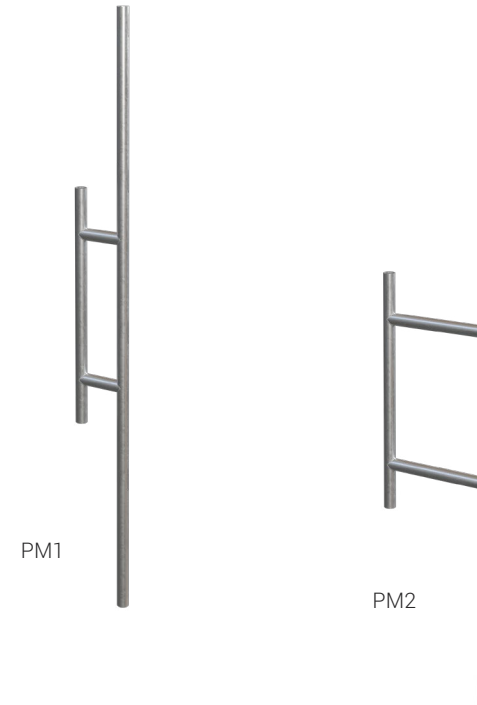


Description:

- One-piece welded design
- 1-1/2" (1.9" OD) Schedule 40 pipe construction
- Hot-dip galvanized
- Fit pipe up to 4-1/2" OD, 60° angle up to 4-1/2", or 90° angle up to 3"

Part #	Standoff	Mast Pipe	Weight
S2-K	2'	24"	23 lb
S3-K	3'	24"	30 lb
S4-K	4'	38"	42 lb

Panel Antenna Stand-Off Mounts



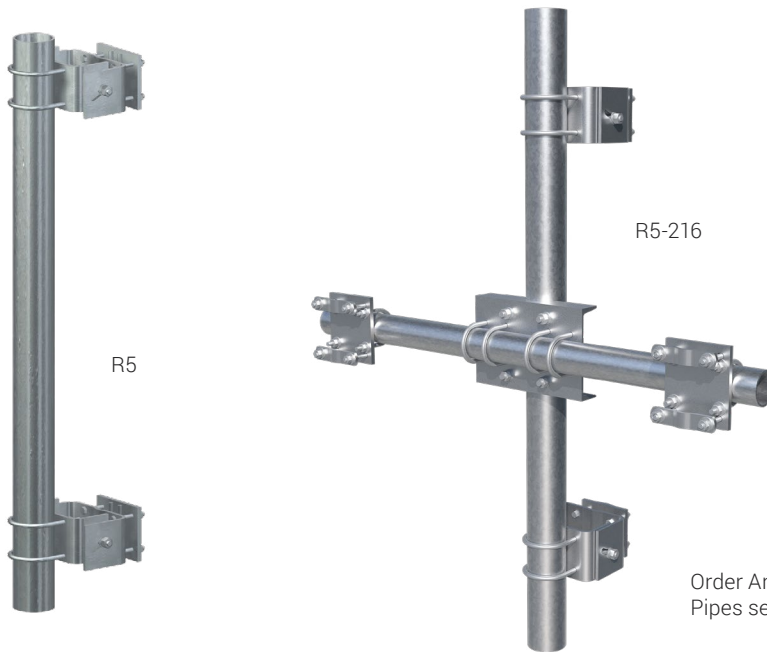
Description:

- Versatile mounts works on towers, monopoles, and buildings
- One-piece welded design
- Constructed from 2-3/8" OD Schedule 40 pipe
- Hot-dip galvanized
- Purchase mounting hardware separately

Part #	Standoff	Antenna Pipe	Mounting Pipe	Weight
PM1	1'	120"	48"	60 lb
PM2	2'	120"	48"	68 lb

T-Mobile Approved Tower Mounts

R5 Heavy-Duty Universal Pipe Mounts



Description:

R5 Heavy-Duty Universal Pipe Mounts

- Sliding brackets for the most difficult tower attachments
- R5 and R5-LL include 4-1/2" x 72" antenna mounting pipe; R5-UP version includes hardware for mounting 1-1/2" to 4-1/2" OD antenna mounting pipes, but no pipe
- Easily adjustable taper up to 5.7° (based on 30" spacing of brackets)
- Kits include U-bolts and all hardware

R5 Universal Pipe Mount with Face

- Sliding brackets for the most difficult tower attachments
- Includes 4-1/2" x 72" mounting pipe
- Accepts 2-3/8" to 4-1/2" OD antenna mounting pipes
- 3-1/2" x 60" horizontal pipe allows up to 48" of separation
- Easily adjustable taper
- Kit includes U-bolts and all hardware
- Purchase antenna mounting pipes separately

Order Antenna Mounting
Pipes separately

Part #	Description	Application	Pipe	Weight
R5	Two brackets, pipe & hardware	1-1/2" to 4-1/2" OD Members	4-1/2" x 72"	137 lb
R5-LL	Two brackets, pipe & hardware	1-1/2" to 10-3/4" Diameter & 3" to 8" Angles	4-1/2" x 72"	148 lb
R5-UP	Two brackets & hardware	1-1/2" to 4-1/2" OD Members	No Pipe Included; Accepts Antenna Mounting Pipes 1-1/2" to 4-1/2"	90 lb
R5-216	R5 Universal Pipe Mount with Face	1-1/2" to 4-1/2" OD Round Members	4-1/2" x 72" Mounting Pipe	235 lb
LLEG-K	Large-Leg Adapter Kit	4-3/4" to 10-3/4" Diameter & 3" to 8" Angles	N/A	78 lb

T-Mobile Approved Tower Mounts

R6 Heavy-Duty Universal Pipe Mount Kit



Description:

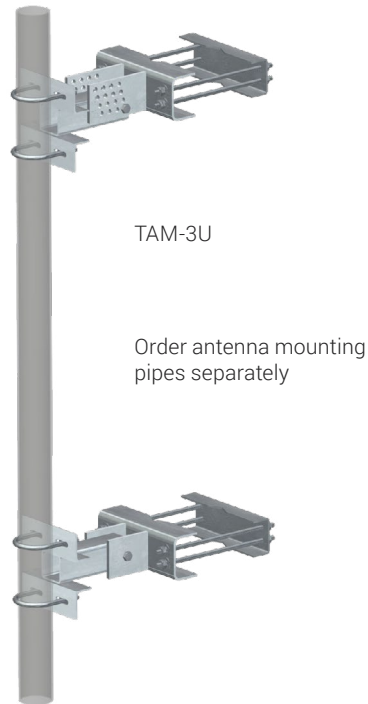
- Heavy-duty sliding brackets for difficult tower attachments
- Includes 4-1/2" x 72" antenna mounting pipe
- Easy-adjustment taper up to 5.7° (based on 30" spacing of brackets)
- Fits round leg sizes 1-1/2" to 9-1/2" diameter and angle sizes 3" to 6"
- With BCAM-HDLL fits up to 16" round legs or #12 Truss Legs
- With BCAM-HDLL-AA fits up to 12" 90° angle legs or #12 Breakdown Legs



Part #	Description	Pipe	Weight
R6	Heavy-duty Universal Pipe Mount Kit	4-1/2" x 72"	265 lb
BCAM-HDLL	Large-Leg Adapter Kit, up to 16" Round Legs, up to 6" 90° Angle Legs, or #12 Breakdown Legs		130 lb
BCAM-HDLL-AA	Large-Leg Adapter Kit, 7" to 12" 90° Angle Legs or #12 Breakdown Legs		130 lb

T-Mobile Approved Tower Mounts

Sliding Universal Tapered Pipe Mounts



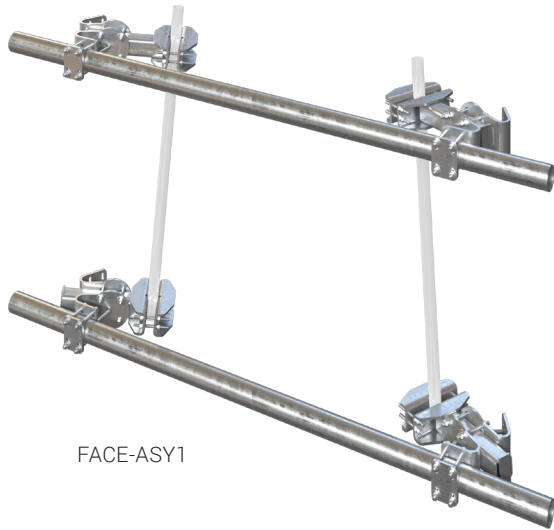
Description:

- Sliding brackets for the most difficult tower attachments
- Easily adjustable taper up to 6° in 3/4° increments
- Universal mounting; round legs from 1" to 8", 60° angle legs from 1-1/2" to 8", and 90° angles 1-1/2" to 6"
- Large-Leg Adapter Kit available for round legs up to 12-3/4", 60° angle legs up to 12", and 90° angles up to 8-1/2"
- Kits include U-bolts and all hardware
- Order antenna mounting pipes separately

Part #	Description	Pipe OD	Standoff	Weight
TAM-2U	Two brackets, U-Bolts & hdw	2-3/8" and 2-7/8"	1'	77 lb
TAM-2U-L	Two brackets, U-Bolts & hdw	2-3/8" and 2-7/8"	2'	93 lb
TAM-3U	Two brackets, U-Bolts & hdw	3-1/2" and 4-1/2"	1'	79 lb
TAM-3U-L	Two brackets, U-Bolts & hdw	3-1/2" and 4-1/2"	2'	95 lb
TAM-LL	Large-Leg Adapter Kit			39 lb

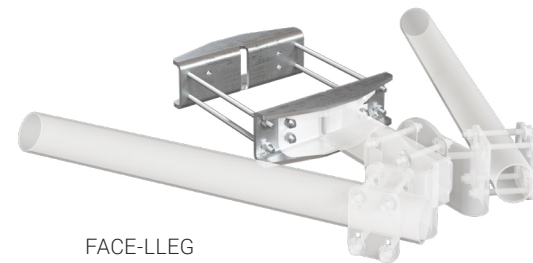
T-Mobile Approved Tower Mounts

Universal Face Pipe Mount Assemblies



Description:

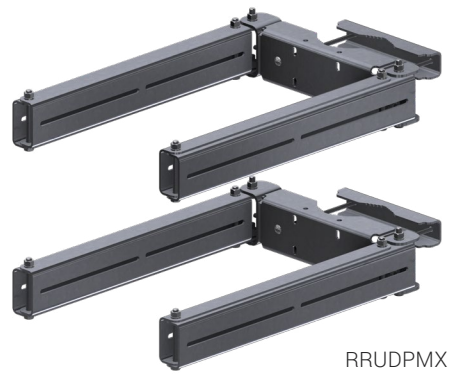
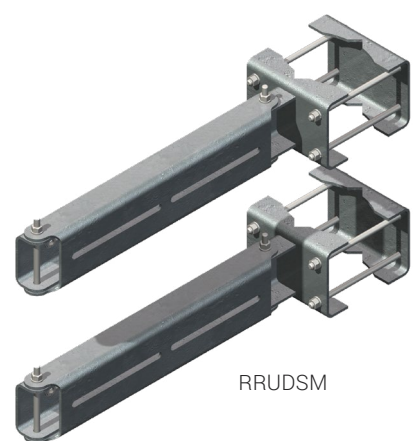
- Universal mounts designed for the most difficult face mount applications
- Easily adjustable taper up to 8° (based on 60" spacing of brackets)
- Work with face pipes 3-1/2" or 4-1/2" OD
- Attach to 1-1/2" to 9-1/2" round members or 3" to 6" angles
- NP versions include brackets for double-level assemblies; NPS versions include brackets for single-level assemblies
- Four FACE-LLEG required for FACE-ASY1 and six FACE-LLEG required for FACE-ASY3
- Four-sector versions are also available, see web site for details



Part #	Sectors	Face Pipes	Weight	
FACE-ASY1-3126	One	(2) 3-1/2" x 10'-6"	690 lb	
FACE-ASY1-4126	One	(2) 4-1/2" x 10'-6"	755 lb	
FACE-ASY1-NP	One	None	530 lb	
FACE-ASY1-NPS	One	None	265 lb	NEW
FACE-ASY3-3126	Three	(6) 3-1/2" x 10'-6"	1,330 lb	
FACE-ASY3-4126	Three	(6) 4-1/2" x 10'-6"	1,530 lb	
FACE-ASY3-NP	Three	None	850 lb	
FACE-ASY3-NPS	Three	None	425 lb	NEW
FACE-LLEG	Varies	None	75 lb	
FACE-PM	Pipe Mount Attachment Kit (No Pipe)		52 lb	

T-Mobile Approved Tower Mounts

Dual RRU Mounts



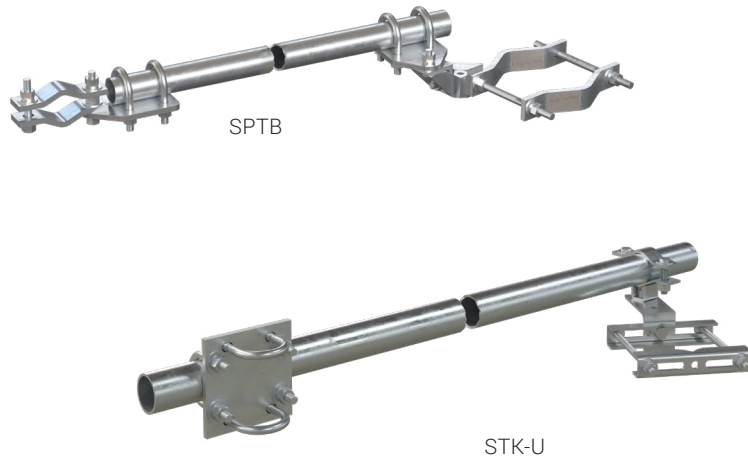
Description:

- RRUDSM mounts up to 2 RRU's; RRUDPMX mounts up to 4 RRU's
- RRU's are kept close to the antenna and allow for easy maintenance and simple installations
- Universal slotted mounting holes accommodate most RRU's
- Hot-dip galvanized construction; all hardware included

Part #	Description	Mounting Range	Weight
RRUDSM	RRU Dual Swivel Mount (Kit of 2)	Pipes up to 4-1/2" Angles up to 3" x 3"	40 lb
RRUDPMX	Dual RRU Swiveling Tower Mount (Kit of 2)	Pipes up to 4-1/2" Angles up to 3" x 3"	115 lb

T-Mobile Approved Tower Components

Universal Sliding Pipe Tie-Back Assemblies

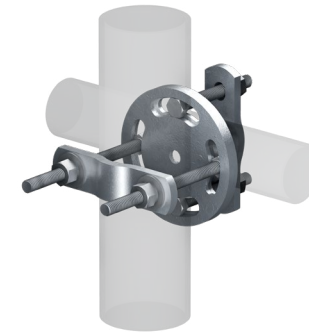


Description:

- SPTB is a 2-3/8" x 10'-6" Stiff Arm
 - Universal Sector Frame attachment hardware fits 1-1/2" to 5" OD
 - Leg bracket fits round legs from 1-1/2" to 8-5/8" OD, 60° angle legs up to 8", and 90° angle legs up to 6"
- STK-U is a 2-3/8" x 12'-6" Stiff Arm
 - Sector Frame attachment hardware fits 2-3/8" Pipe
 - Leg bracket fits round legs from 1-1/2" to 6" OD, 60° angle legs up to 6", and 90° angle legs up to 4"

Part #	Description	Weight
SPTB	Sliding Pipe Stiff Arm Assembly 2-3/8" pipe	89 lb
SPTB278	Sliding Pipe Stiff Arm Assembly 2-7/8" pipe	115 lb
SPTB-NP	2-3/8" Sliding Pipe Stiff Arm Hardware, No Pipe	48 lb
SPTB278-NP	2-7/8" Sliding Pipe Stiff Arm Hardware, No Pipe	51 lb
STK-U	Sector Frame Stiff Arm Kit; 2-3/8" x 12'-6" pipe	64 lb

Adjustable Clamp Plate Tie-Back Assembly



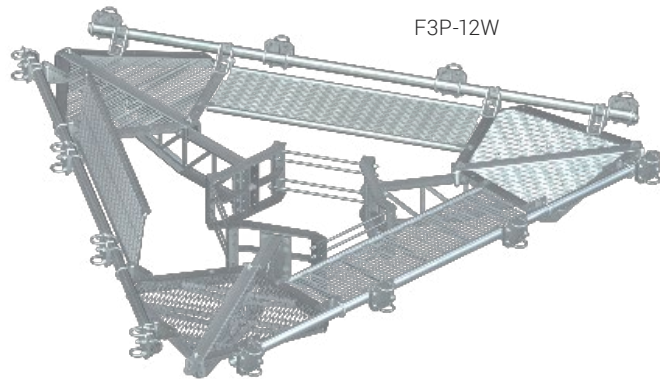
Description:

- Drop-forged design for increased strength and durability
- Hot-dip galvanized
- All hardware included
- Angle adjusts from 40° to 140°

Part #	Application	Weight
PUCK	7/8" to 3-1/2" OD	6.2 lb

T-Mobile Approved Platforms

Fortress™ Tri-Platform Mount



Add Antenna Mounting Pipes separately

Description:

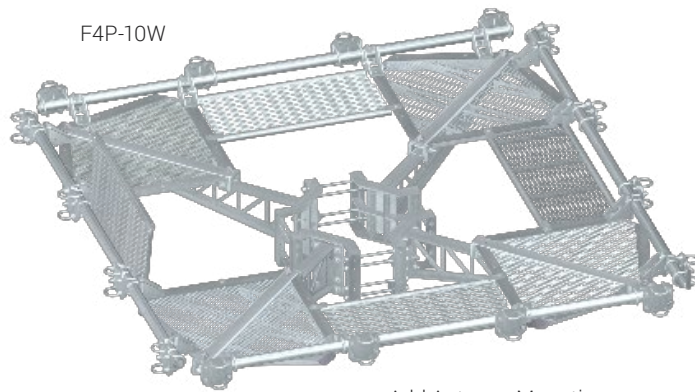
- The Fortress™ Tri-Platform is the strongest monopole platform we have ever built; it's robust design eliminates the need for a second ring mount and reinforcement kit
- The revolutionary new truss design makes the Fortress™ Tri-Platform 3 times stronger than ordinary platform mounts while maintaining a low EPA
- Innovative hinged grating sections allow easy access to walkway; flush walkway and the lack of sharp edges make this platform safe for climbers
- Welded design requires minimal hardware; all hardware is 5/8" to further simplify assembly
- Kits include hardware to mount up to twelve 2-3/8" or 2-7/8" Antenna Mounting Pipes (order separately)
- No-grating versions of the Fortress platform are also available

Part #	Walkway	Pole Diameter	Pole Circumference	Face Width	Weight
F3P-8W	Yes	12" - 30"	37.7" - 94.2"	9' - 0"	1,850 lb
F3P-10W	Yes	12" - 45"	37.7" - 141.3"	10' - 6"	1,925 lb
F3P-12W	Yes	12" - 60"	37.7" - 188.4"	12' - 6"	2,130 lb
F3P-14W	Yes	12" - 60"	37.7" - 188.4"	14' - 6"	2,335 lb
F3P-8	No	12" - 30"	37.7" - 94.2"	9' - 0"	1,695 lb
F3P-10	No	12" - 45"	37.7" - 141.3"	10' - 6"	1,745 lb
F3P-12	No	12" - 60"	37.7" - 188.4"	12' - 6"	1,840 lb
F3P-14	No	12" - 60"	37.7" - 188.4"	14' - 6"	1,960 lb

Handrail Kits		
Part #	Description	Weight
F3P-HRK8	Handrail Kit for F3P-8W Platform	375 lb
F3P-HRK10	Handrail Kit for F3P-10W Platform	395 lb
F3P-HRK12	Handrail Kit for F3P-12W Platform	410 lb
F3P-HRK14	Handrail Kit for F3P-14W Platform	440 lb

T-Mobile Approved Platforms

Fortress™ Quad-Platform Mount



F4P-10W

Add Antenna Mounting
Pipes separately

Description:

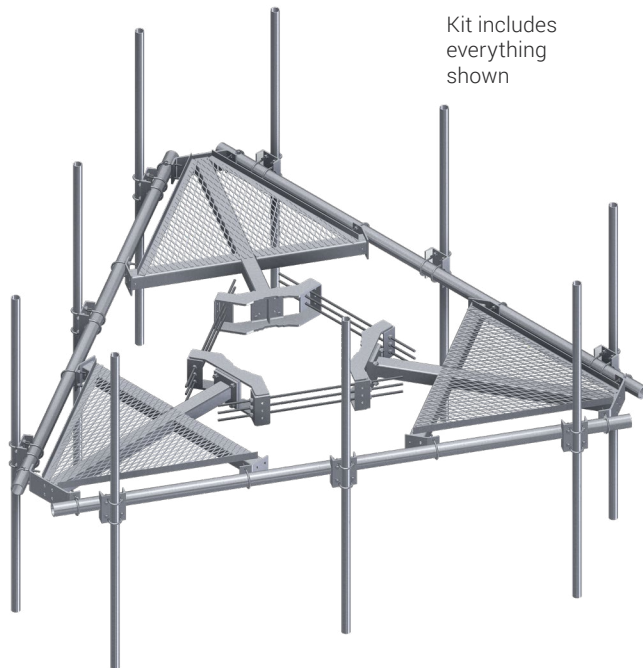
- The Fortress™ Quad-Platform is the strongest monopole platform we have ever built; it's robust design eliminates the need for a second ring mount and reinforcement kit
- The revolutionary new truss design makes the Fortress™ Quad-Platform 3 times stronger than ordinary platform mounts while maintaining a low EPA
- Innovative hinged grating sections allow easy access to walkway; flush walkway and the lack of sharp edges make this platform safe for climbers
- Welded design requires minimal hardware; all hardware is 5/8" to further simplify assembly
- Kits include hardware to mount up to sixteen 2-3/8" or 2-7/8" Antenna Mounting Pipes (order separately)
- No-grating versions of the Fortress platform are also available

Part #	Walkway	Pole Diameter	Pole Circumference	Face Width	Weight
F4P-8W	Yes	12" - 40"	37.7" - 94.2"	9' - 0"	2,425 lb
F4P-10W	Yes	12" - 60"	37.7" - 125.6"	10' - 6"	2,525 lb
F4P-12W	Yes	12" - 60"	37.7" - 188.4"	12' - 6"	2,780 lb
F4P-14W	Yes	12" - 60"	37.7" - 188.4"	14' - 6"	3,060 lb
F4P-8	No	12" - 40"	37.7" - 94.2"	9' - 0"	2,225 lb
F4P-10	No	12" - 60"	37.7" - 125.6"	10' - 6"	2,275 lb
F4P-12	No	12" - 60"	37.7" - 188.4"	12' - 6"	2,400 lb
F4P-14	No	12" - 60"	37.7" - 188.4"	14' - 6"	2,560 lb

Handrail Kits		
Part #	Description	Weight
F4P-HRK8	Handrail Kit for F4P-8W Platform	465 lb
F4P-HRK10	Handrail Kit for F4P-10W Platform	490 lb
F4P-HRK12	Handrail Kit for F4P-12W Platform	510 lb
F4P-HRK14	Handrail Kit for F4P-14W Platform	550 lb

T-Mobile Approved Platforms

Low-Profile Co-Location Platforms for 9 Antennas



Description:

- COMPLETE KITS include:
 - Ring Mount
 - (3) Support Arms
 - Grating
 - Antenna Mounting Pipes and all hardware
- Note: NP versions do not include hardware for Antenna Mounting Pipes

Part #	Pole Diameter	Pole Circumference	Face Width	Mounting Pipes
RMQP-NP	12" - 38"	37.7" - 119.3"	12'-6"	No Pipes
RMQP-372	12" - 38"	37.7" - 119.3"	12'-6"	(9) 2-3/8" x 72"
RMQP-384	12" - 38"	37.7" - 119.3"	12'-6"	(9) 2-3/8" x 84"
RMQP-396	12" - 38"	37.7" - 119.3"	12'-6"	(9) 2-3/8" x 96"
RMQP-3126	12" - 38"	37.7" - 119.3"	12'-6"	(9) 2-3/8" x 126"
RMQLP-NP	12" - 38"	37.7" - 119.3"	14'-6"	No Pipes
RMQLP-372	12" - 38"	37.7" - 119.3"	14'-6"	(9) 2-3/8" x 72"
RMQLP-384	12" - 38"	37.7" - 119.3"	14'-6"	(9) 2-3/8" x 84"
RMQLP-396	12" - 38"	37.7" - 119.3"	14'-6"	(9) 2-3/8" x 96"
RMQLP-3126	12" - 38"	37.7" - 119.3"	14'-6"	(9) 2-3/8" x 126"

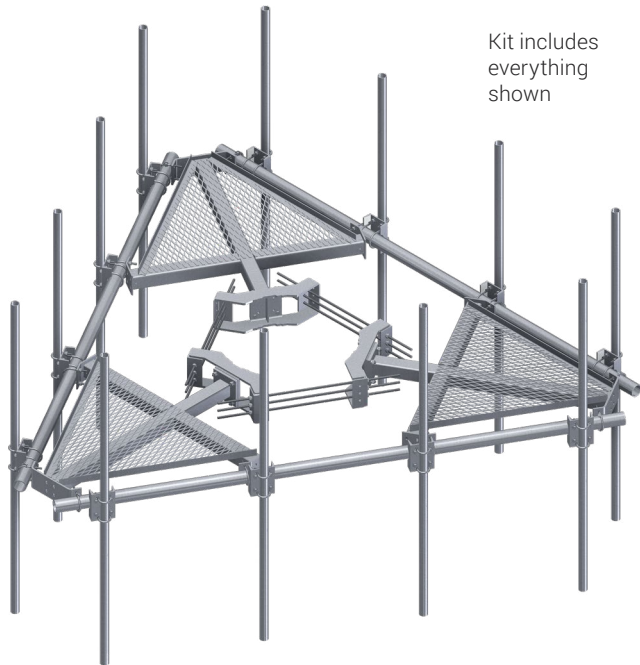
Larger Pole Sizes

Part #	Pole Diameter	Pole Circumference	Face Width	Mounting Pipes
RMVP-NP	30" - 60"	94.2" - 188.4"	14'-6"	No Pipes
RMVP-372	30" - 60"	94.2" - 188.4"	14'-6"	(9) 2-3/8" x 72"
RMVP-384	30" - 60"	94.2" - 188.4"	14'-6"	(9) 2-3/8" x 84"
RMVP-396	30" - 60"	94.2" - 188.4"	14'-6"	(9) 2-3/8" x 96"
RMVP-3126	30" - 60"	94.2" - 188.4"	14'-6"	(9) 2-3/8" x 126"

Handrails		
Part#	Description	Mounting Pipes
HRK12	Handrail Kit for 12'-6" Face	2-3/8" Antenna Pipes
HRK14	Handrail Kit for 14'-6" Face	2-3/8" Antenna Pipes
HRK12-U	Handrail Kit for 12'-6" Face	2-3/8" and 2-7/8" Antenna Pipes
HRK14-U	Handrail Kit for 14'-6" Face	2-3/8" and 2-7/8" Antenna Pipes

T-Mobile Approved Platforms

Low-Profile Co-Location Platforms for 12 Antennas



Description:

- COMPLETE KITS include:
 - Ring Mount
 - (3) Support Arms
 - Grating
 - Antenna Mounting Pipes and all hardware
- Note: NP versions do not include hardware for Antenna Mounting Pipes

Part #	Pole Diameter	Pole Circumference	Face Width	Mounting Pipes
RMQP-NP	12" - 38"	37.7" - 119.3"	12'-6"	No Pipes
RMQP-472	12" - 38"	37.7" - 119.3"	12'-6"	(12) 2-3/8" x 72"
RMQP-484	12" - 38"	37.7" - 119.3"	12'-6"	(12) 2-3/8" x 84"
RMQP-496	12" - 38"	37.7" - 119.3"	12'-6"	(12) 2-3/8" x 96"
RMQP-4126	12" - 38"	37.7" - 119.3"	12'-6"	(12) 2-3/8" x 126"
RMQLP-NP	12" - 38"	37.7" - 119.3"	14'-6"	No Pipes
RMQLP-472	12" - 38"	37.7" - 119.3"	14'-6"	(12) 2-3/8" x 72"
RMQLP-484	12" - 38"	37.7" - 119.3"	14'-6"	(12) 2-3/8" x 84"
RMQLP-496	12" - 38"	37.7" - 119.3"	14'-6"	(12) 2-3/8" x 96"
RMQLP-4126	12" - 38"	37.7" - 119.3"	14'-6"	(12) 2-3/8" x 126"

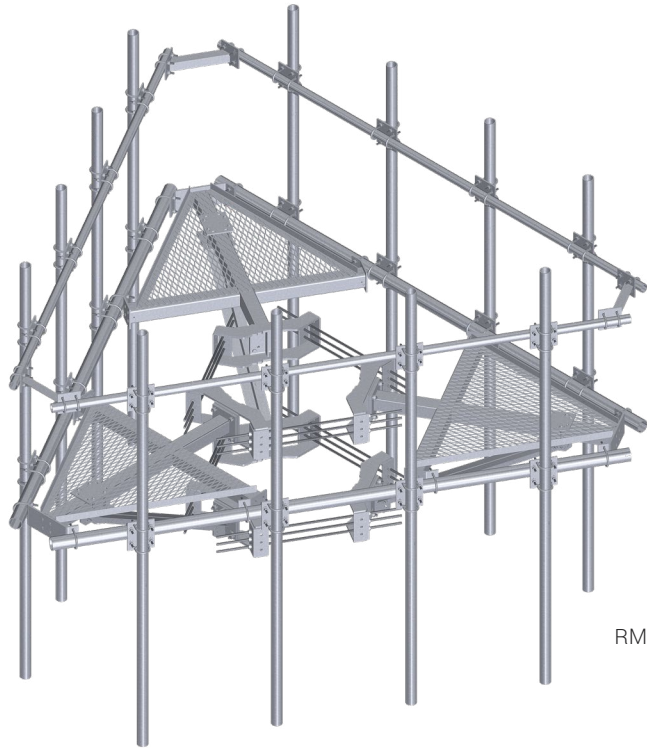
Larger Pole Sizes

Part #	Pole Diameter	Pole Circumference	Face Width	Mounting Pipes
RMVP-NP	30" - 60"	94.2" - 188.4"	14'-6"	No Pipes
RMVP-472	30" - 60"	94.2" - 188.4"	14'-6"	(12) 2-3/8" x 72"
RMVP-484	30" - 60"	94.2" - 188.4"	14'-6"	(12) 2-3/8" x 84"
RMVP-496	30" - 60"	94.2" - 188.4"	14'-6"	(12) 2-3/8" x 96"
RMVP-4126	30" - 60"	94.2" - 188.4"	14'-6"	(12) 2-3/8" x 126"

Handrails		
Part#	Description	Mounting Pipes
HRK12	Handrail Kit for 12'-6" Face	2-3/8" Antenna Pipes
HRK14	Handrail Kit for 14'-6" Face	2-3/8" Antenna Pipes
HRK12-U	Handrail Kit for 12'-6" Face	2-3/8" and 2-7/8" Antenna Pipes
HRK14-U	Handrail Kit for 14'-6" Face	2-3/8" and 2-7/8" Antenna Pipes

T-Mobile Approved Platforms

Low-Profile Co-Location Platforms for 12 Antennas



RMQP-40126-HK

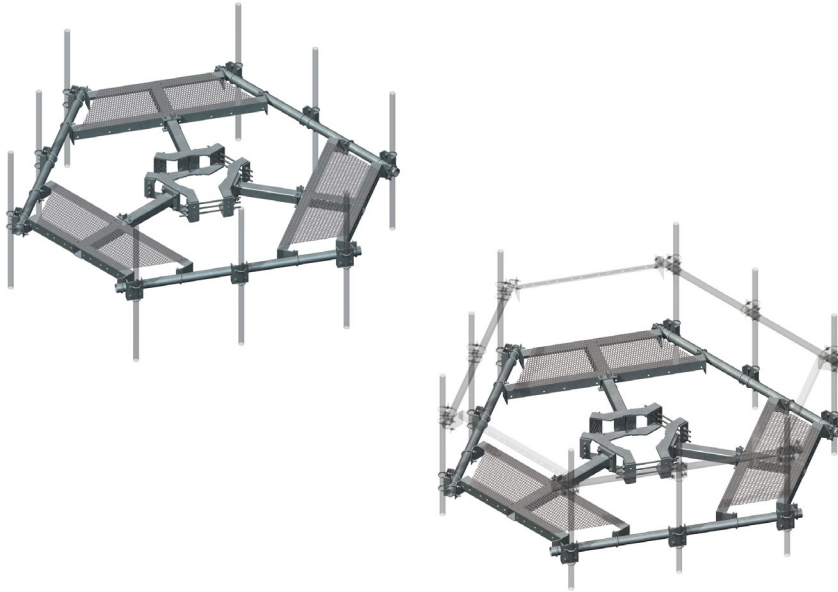
Description:

- COMPLETE KITS include:
 - Ring Mount
 - (3) Support Arms
 - Grating
 - Antenna Mounting Pipes and all hardware
 - Top Rail Kit, and Reinforcement Kit

Part #	Pole Diameter	Pole Circumference	Face Width	Mounting Pipes
RMQP-40126-HK	12" - 38"	37.7" - 119.3"	12'-6"	(12) 2-7/8" x 126"
RMQP-4126-HK	12" - 38"	37.7" - 119.3"	12'-6"	(12) 2-3/8" x 126"
RMQLP-4126-HK	12" - 38"	37.7" - 119.3"	14'-6"	(12) 2-3/8" x 126"
RMVP-4126-HK	30" - 60"	94.2" - 188.4"	14'-6"	(12) 2-3/8" x 126"

T-Mobile Approved Snub Nose Platform Kits

Snub-Nose Platform Kits



Description:

- Available in 8' and 10' versions
- Our low-profile design offers a lower EPA for reduced loads on the tower
- This robust platform supports live loads of 500 lb
- Handrail kit option provides added strength and easy antenna and RRU mounting as well as worker safety
- Add "HR" to the part number (example SNP8HR-NP) for platform with handrail kit
- Simple design for ease of assembly
- Complete kits include:
 - Ring mount
 - Three support arms
 - Grating
 - Antenna mounting pipes and all hardware
- Note: NP versions do not include antenna mounting pipes or hardware;
- Contact us for load and engineering data

8' Platforms

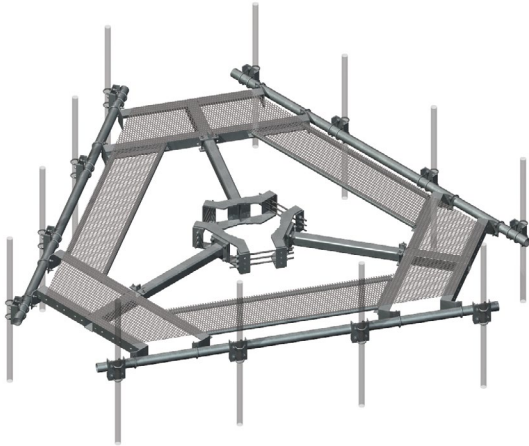
Part #	Pole Diameter	Pole Circumference	Face Width	Mounting Pipes	Weight
SNP8-396	12" - 45"	37.7" - 141.3"	8'	(9) 2-3/8" x 96"	1,465 lb
SNP8-3126	12" - 45"	37.7" - 141.3"	8'	(9) 2-3/8" x 126"	1,585 lb
HRA8	2-7/8" Handrail Kit				310 lb

10' Platforms

Part #	Pole Diameter	Pole Circumference	Face Width	Mounting Pipes	Weight
SNP10-NP	12" - 45"	37.7" - 141.3"	10'	None	1,350 lb
SNP10-3126	12" - 45"	37.7" - 141.3"	10'	(9) 2-3/8" x 126"	1,605 lb
SNP10-496	12" - 45"	37.7" - 141.3"	10'	(12) 2-3/8" x 96"	1,645 lb
SNP10-4126	12" - 45"	37.7" - 141.3"	10'	(12) 2-3/8" x 126"	1,765 lb
HRA10	2-7/8" Handrail Kit				365 lb

T-Mobile Approved Snub Nose Platform Kits

Full Walkway Snub-Nose Platform Kits



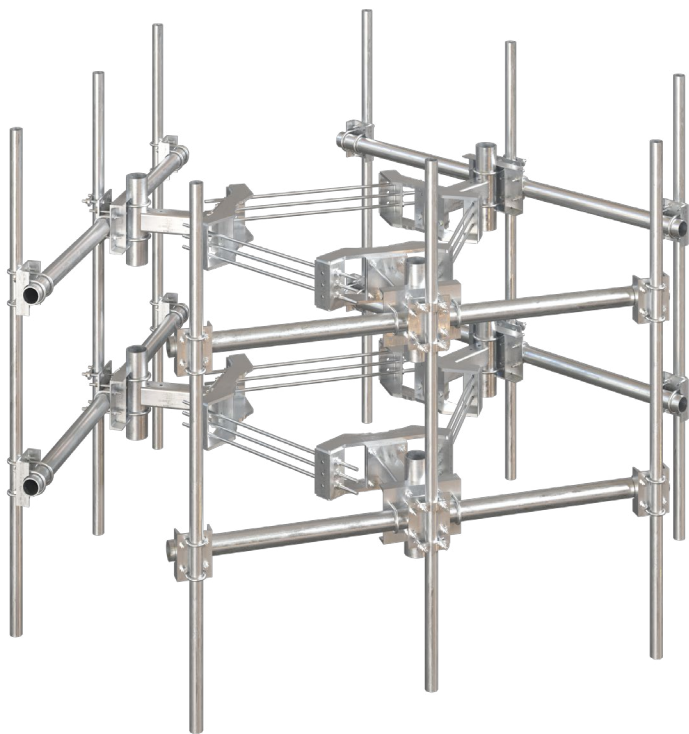
Description:

- Available in 12' & 14' versions
- Our low-profile design offers a lower EPA for reduced loads on the tower
- These platforms support live loads of 500 lb
- Handrail kit option provides added strength and easy antenna and RRU mounting as well as worker safety
- Add "HR" to the part number (example SNP12HR-NP) for platform with handrail kit
- Simple design for ease of assembly
- Complete kits include:
 - Ring mount
 - Three support arms
 - Grating
 - Antenna mounting pipes and all hardware
- Note: NP versions do not include antenna mounting pipes or hardware
- Contact us for load and engineering data

12' Platforms					
Part #	Pole Diameter	Pole Circumference	Face Width	Mounting Pipes	Weight
SNP12-396	12" - 45"	37.7" - 141.3"	12'	(9) 2-3/8" x 96"	1,900 lb
SNP12-3126	12" - 45"	37.7" - 141.3"	12'	(9) 2-3/8" x 126"	1,990 lb
SNP12-496	12" - 45"	37.7" - 141.3"	12'	(12) 2-3/8" x 96"	2,030 lb
SNP12-4126	12" - 45"	37.7" - 141.3"	12'	(12) 2-3/8" x 126"	2,150 lb
HRA12	2-7/8" Handrail Kit				420 lb
14' Platforms					
Part #	Pole Diameter	Pole Circumference	Face Width	Mounting Pipes	Weight
SNP14-396	12" - 45"	37.7" - 141.3"	14'	(9) 2-3/8" x 96"	1,945 lb
SNP14-3126	12" - 45"	37.7" - 141.3"	14'	(9) 2-3/8" x 126"	2,035 lb
SNP14-496	12" - 45"	37.7" - 141.3"	14'	(12) 2-3/8" x 96"	2,075 lb
SNP14-4126	12" - 45"	37.7" - 141.3"	14'	(12) 2-3/8" x 126"	2,195 lb
HRA14	2-7/8" Handrail Kit				440 lb

T-Mobile Approved T-Arm Mounts

Monopole Dual Triple T-Arm Kit



RMVD-8-2120-18

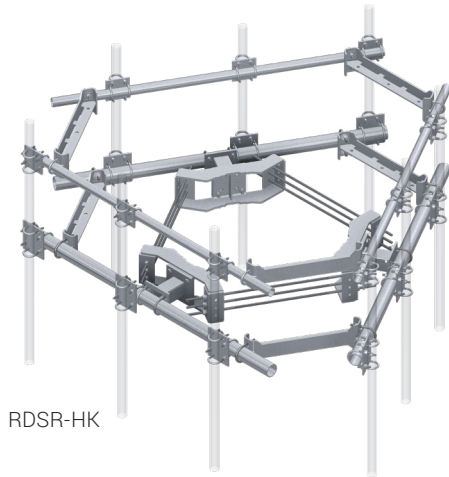
Description:

- 8' Double T-Arm Kit
- Monopole mounting range: 12" to 45"

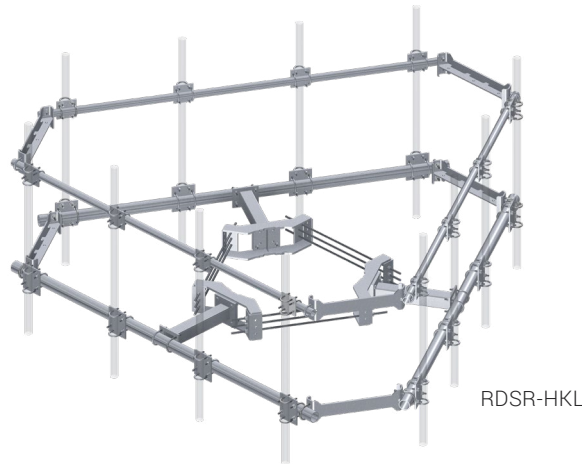
Part#	Description	Antenna Pipe (QTY) & Size	Weight
RMVD8-296-18	8' Monopole Dual Triple T-Arm Kit w/ 18" Standoff	(9) 2-3/8" x 96"	1,881 lb
RMVD8-2120-18	8' Monopole Dual Triple T-Arm Kit w/ 18" Standoff	(9) 2-3/8" x 120"	1,937 lb

T-Mobile Approved Solutions for Concealment Sites

Radio Support Arm with Reinforced Support Rail



RDSR-HK



RDSR-HKL

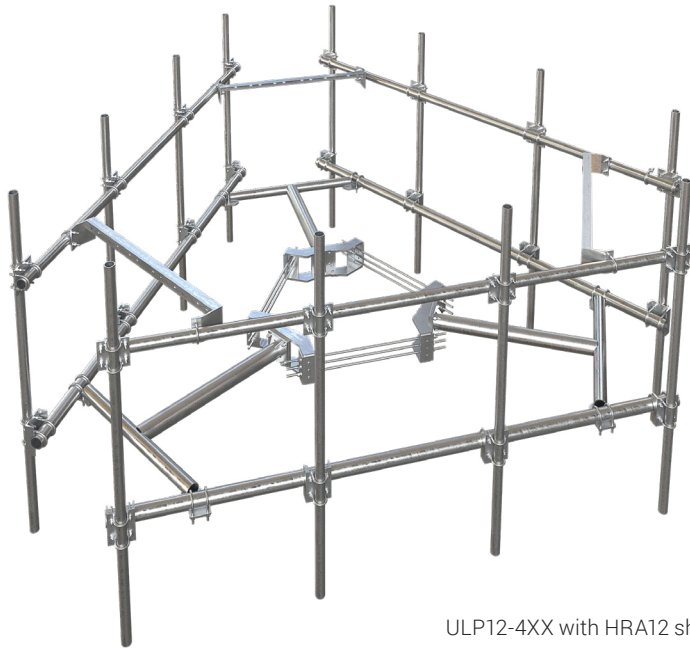
Description:

- COMPLETE KITS include:
 - Ring Mount
 - (3) Support Arms
 - Support Rail and Corner Brackets
 - Horizontal Pipes and Crossover Plates
- Order 2-3/8" diameter or 2-7/8" diameter Mount Pipes separately

Part #	Face Width	Standoff Distance	Hardware to Mount (X) Antennas	Pole Diameter	Weight
RDSR-HK	84"	8"	9	12" - 45"	890 lb
RDSR-HKL	126"	24"	12	12" - 45"	1,150 lb

T-Mobile Approved Solution for Concealment Sites

Ultra-Low-Profile T-Arm Kit for 12 Antenna with Support Rail



ULP12-4XX with HRA12 shown

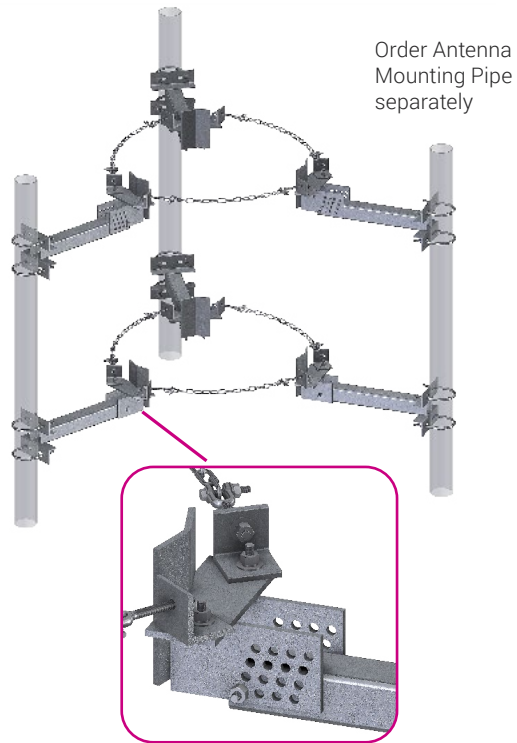
Description:

- Increased capacity
- Low-Profile design for reduced tower loading
- All round members reduce the risk of migratory bird nesting.
- Order ULP12 Frame and HRA12 Support Rail Separately

Part #	Pole Diameter	Standoff	Face Width	Mounting Pipes	Weight
ULP12-NP	12" - 45"	36"	12'-6"	No Antenna Pipes	883 lb
ULP12-472	12" - 45"	36"	12'-6"	(12) 2-3/8" x 72"	1,312 lb
ULP12-484	12" - 45"	36"	12'-6"	(12) 2-3/8" x 84"	1,358 lb
ULP12-496	12" - 45"	36"	12'-6"	(12) 2-3/8" x 96"	1,404 lb
ULP12-4126	12" - 45"	36"	12'-6"	(12) 2-3/8" x 126"	1,524 lb
HRA12 Support Rail	12" - 45"	36"	12'-6"		416 lb

T-Mobile Approved T-Arms

Taper Adjustable Chain Mounts



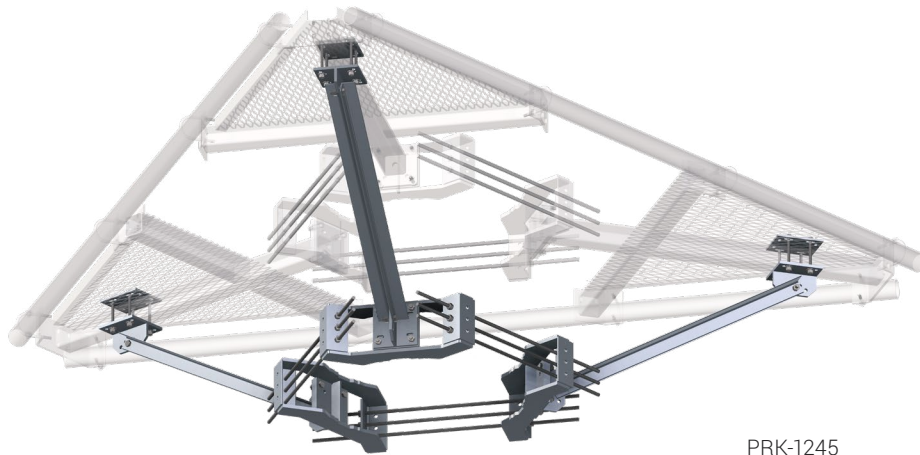
Description:

- Fit polygon or round poles
- Simple taper adjustment allows for up to 6° of taper in 3/4° increments
- Includes U-Bolts for mounting 2-3/8" or 4-1/2" OD Pipes
- Hot-dip galvanized
- Purchase U-Bolts separately if mounting 2-7/8" or 3-1/2" Pipes)
- Order Antenna Mounting Pipes separately

Part #	Description	Standoff	Range	Weight
TCHM1	Single Sector	1'	5" - 36"	80 lb
TCHM1-L	Single Sector	2'	5" - 36"	96 lb
TCHM2	Double Sector	1'	5" - 36"	150 lb
TCHM2-L	Double Sector	2'	5" - 36"	180 lb
TCHM3	Triple Sector	1'	6-1/2" - 36"	225 lb
TCHM3-L	Triple Sector	2'	6-1/2" - 36"	270 lb

T-Mobile Approved T-Arms

Platform/T-Arm Reinforcement Kits



PRK-1245

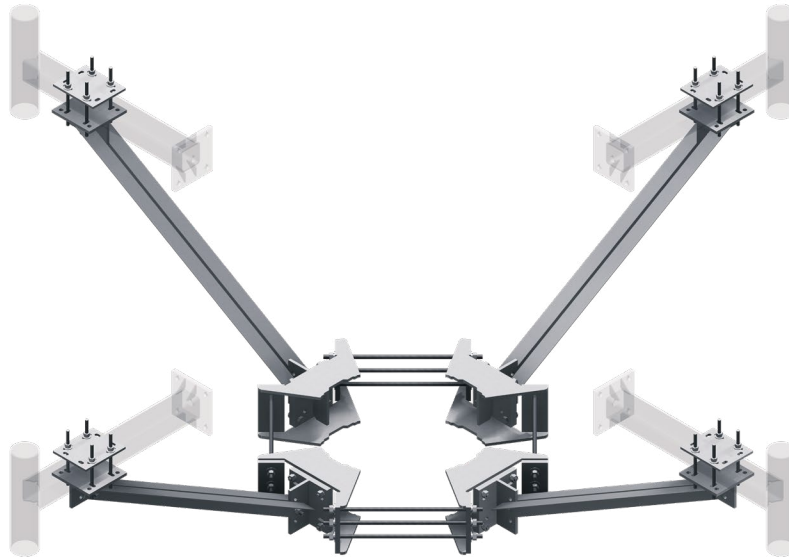
Description:

- Simple bolt-on Reinforcement Kits include Ring Mount and Support Arms to reinforce existing platforms or T-arms when increased dead load is required (multiple RRU's)
- Fit round or polygon poles from 12" to 45" diameter, or up to 60" with the addition of the RM-ADK Large Pole Adapter Kit
- The maximum additional vertical load capacity gained is 4,000 lb per sector arm (12,000 lb total)
- PRK-1245, PRK-1245L, and PRK-NA hardware kits fit up to 4" round or square tube standoff arms
- PRK-1245LW hardware kit fits up to 6" round or square tube standoff arms
- PRK-HD hardware kit fits up to 5" round or square tube standoff arms

Part#	Description	Pole Diameter	Horizontal Connection	Angle Size	Weight
PRK-1245	Reinforcement Kit	12" to 45"	4" x 4" Max	2L 2-1/2" x 2-1/2" x 3/16" x 52"	467 lb
PRK-1245L	Long Reinforcement Kit	12" to 45"	4" x 4" Max	2L 2-1/2" x 2-1/2" x 3/16" x 84"	518 lb
PRK-1245LW	Reinforcement Kit, Wide Connection	12" to 45"	6" x 6" Max	2L 2-1/2" x 2-1/2" x 3/16" x 84"	565 lb
PRK-HD	Reinforcement Kit, Heavy-Duty Angle	12" to 45"	5" x 5" Max	2L 3" x 3" x 1/4" x 84"	628 lb
PRK-NA	Attachment hardware only, no angles (arms) included	12" to 45"	4" x 4" Max	Order Separately	381 lb
RM-ADK	Large Pole Adapter Kit	45" to 60"	---	---	106 lb

T-Mobile Approved T-Arms

Platform/T-Arm Reinforcement Kits



PQ-1245

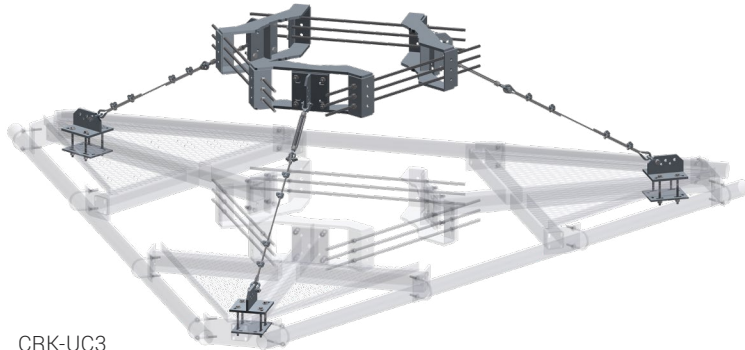
Description:

- Simple bolt-on Reinforcement Kits include Ring Mount and Support Arms to reinforce existing platforms or T-arms when increased dead load is required (multiple RRU's)
- Fit round or polygon poles from 12" to 60" diameter
- Increase platform dead load capacity up to 5,600 lb per sector; contact us for detailed load and engineering data
- The maximum additional vertical load capacity gained is 3,000 lb per sector arm (12,000 lb total)
- Attaching hardware fits up to 4" round or square tube standoff arms
- Attach directly to Fortress™ and SNP series platforms

Part#	Description	Pole Diameter	Horizontal Connection	Angle Size	Weight
PQ-1245	Reinforcement Kit	12" to 60"	4" x 4" Max	2L 2-1/2" x 2-1/2" x 3/16" x 52"	605 lb
PQ-1245L	Long Reinforcement Kit	12" to 60"	4" x 4" Max	2L 2-1/2" x 2-1/2" x 3/16" x 84"	677 lb
PQ-NA	Attachment hardware only, no angles (arms) included	12" to 60"	4" x 4" Max	Order Angle Separately	456 lb

T-Mobile Approved T-Arms

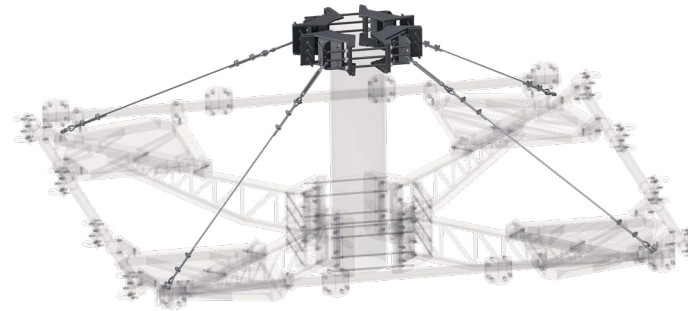
Cable Platform Reinforcement Kits



CRK-UC3

Description:

- Cable Reinforcement Kits provide additional capacity for Fortress™ or other monopole platforms
- Extremely low EPA
- Clamp ring mounts a minimum of 48" above the platform
- 5/16" galvanized aircraft cable
- Universal kit attaching hardware fits up to 4" square tube or round support arms
- Attach to the platform with 5/16" shackles
- CRK-DC3 and CRK-UC3 fit round or polygon poles from 12" to 45" diameter or up to 60" with the addition of the RM-ADK Large Pole Adapter Kit
- CRK-DC4 and CRK-UC4 fit round or polygon poles from 12" to 60" diameter

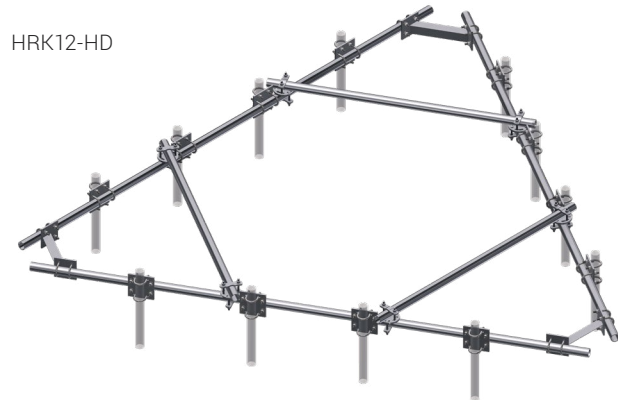


CRK-DC4

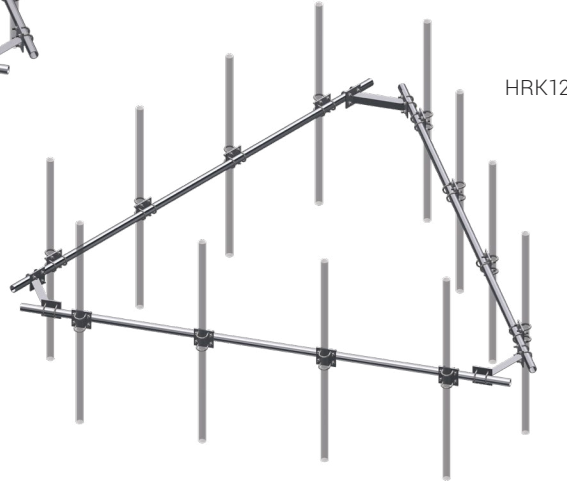
Part#	Platform Style	Pole Diameter	Horizontal Connection	Weight
CRK-DC3	Fortress F3P	12" – 45"	4" x 4" Max	349 lb
CRK-DC4	Fortress F4P	12" – 60"	4" x 4" Max	409 lb
CRK-UC3	Universal	12" – 45"	4" x 4" Max	415 lb
CRK-UC4	Universal	12" – 60"	4" x 4" Max	497 lb
RM-ADK	45" to 60" Large Pole Adapter Kit for CRK-DC3 and CRK-UC3		---	106 lb

T-Mobile Approved T-Arms

Universal Platform Handrail Kits



HRK12-HD



HRK12

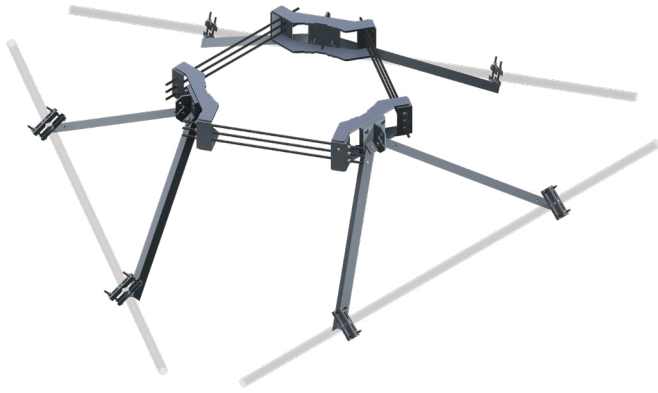
Description:

- Use to add Handrails and Antenna Pipe support to existing platforms
- Universal design works for a wide variety of platforms
- COMPLETE KITS include:
 - Handrail Pipes
 - (3) Corner Brace Kits
 - (12) Crossover plates and hardware
 - HD kits include 3 additional Cross Brace supports

Part#	Face Width	Handrail Pipe Size	Antenna Mounting Pipe Size	Weight
HRK12	12'-6"	2-3/8" OD x 150"	2-3/8"	273 lb
HRK14	14'-6"	2-3/8" OD x 174"	2-3/8"	303 lb
HRK12-HD	12'-6"	2-3/8" OD x 150"	2-3/8" or 2-7/8"	407 lb
HRK14-HD	14'-6"	2-3/8" OD x 174"	2-3/8" or 2-7/8"	449 lb
HRK12-3HD	12'-6"	2-7/8" OD x 150"	2-3/8" or 2-7/8"	503 lb
HRK14-3HD	14'-6"	2-7/8"OD x 174"	2-3/8" or 2-7/8"	525 lb

T-Mobile Approved T-Arms

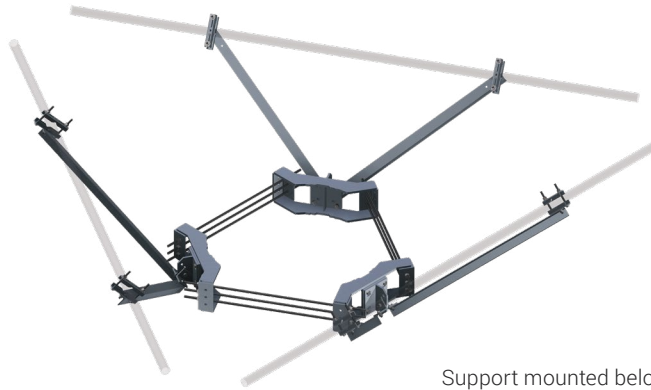
Handrail Reinforcement Kits



Support mounted above handrail

Description:

- Provide extra rigidity to new or existing platform handrails
- Reinforcement Kits can be installed to support the handrails from above or below
- PRK-SFS and PRK-SFS-L fit round or polygon poles from 12" to 45" diameter, or up to 60" diameter with the addition of the RM-ADK Large Pole Adapter Kit
- PQ-SFS fits round or polygon poles from 12" to 60" diameter
- Handrail connection hardware fits round members 1" to 3-1/2" OD

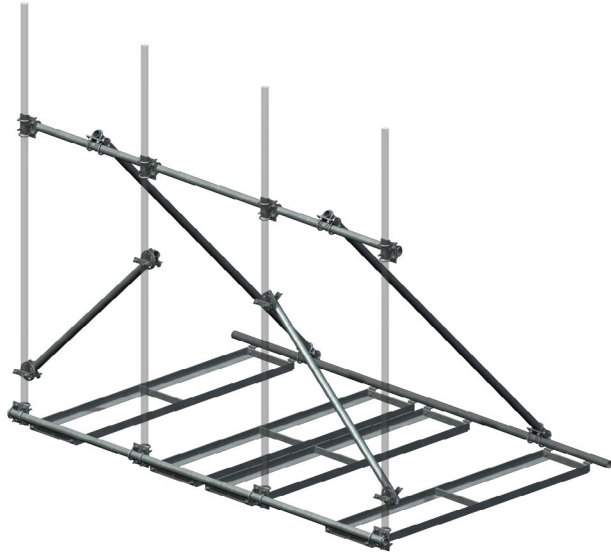


Support mounted below handrail

Part#	Description	Angle Size	Weight
PRK-SFS	Handrail Reinforcement Kit	L 2-1/2" x 2-1/2" x 3/16" x 52-1/2"	574 lb
PRK-SFS-L	Long Angle Handrail Reinforcement Kit	L 2-1/2" x 2-1/2" x 3/16" x 72"	643 lb
PQ-SFS	Quad Handrail Reinforcement Kit	L 2-1/2" x 2-1/2" x 1/4" x 120"	758 lb
RM-ADK	Large Pole Adapter Kit for PRK Kits	---	106 lb

T-Mobile Approved Non-Penetrating Rooftop Frames

Non-Penetrating Rooftop Pipe Frames



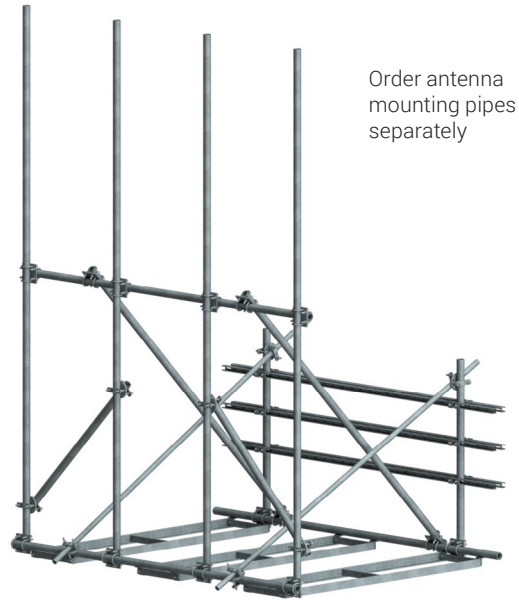
Description:

- Pipe rooftop frames, perfect for larger loads like multiple RRU's or antennas
- Available with or without antenna mounting pipes
- Welded trays for easy assembly
- Standard kits accept 2-3/8" antenna mounting pipes
- For other size antenna mounting pipes purchase SCX7-U universal crossover plate kits
- If additional ballast capacity is required use ballast tray add-on kits
- Purchase rubber mats separately
- **Call or see our online assembly drawings for ballast equations.**
www.sitepro1.com

Part #	Face Width	Mounting Pipes	Footprint	Mats Required	Weight
RTP10-496	10' - 6"	(4) 2-3/8" x 96"	92" x 126"	6	695 lb
RTP10-4126	10' - 6"	(4) 2-3/8" x 126"	92" x 126"	6	735 lb
RTP12	12' - 6"	No Pipes	92" x 150"	8	645 lb
RTP12-496	12' - 6"	(4) 2-3/8" x 96"	92" x 150"	8	770 lb
RTP12-4126	12' - 6"	(4) 2-3/8" x 126"	92" x 150"	8	805 lb
RTP14	14' - 6"	No Pipes	92" x 174"	12	900 lb
RTP14-496	14' - 6"	(4) 2-3/8" x 96"	92" x 174"	12	1,020 lb
RTP14-4126	14' - 6"	(4) 2-3/8" x 126"	92" x 174"	12	1,060 lb
MAT18	1/2" x 18" x 48" Rubber Mat				16 lb
CSRT-BTD	Ballast Tie Down Kit (RTP10 requires 3, RTP 12 requires 4, RTP14 requires 6)				12 lb

T-Mobile Approved Non-Penetrating Rooftop Frames

Non-Penetrating Rooftop Frames with RRU Mounts



Order antenna
mounting pipes
separately

Description:

- Similar to our standard non-penetrating rooftop pipe frames, but include a rear RRU mounting frame
- Standard kits include four 2-3/8" x 174" antenna mounting pipes
- NP kits include hardware for 2-3/8" antenna mounting pipes; purchase antenna mounting pipes separately
- If using other size antenna mounting pipes purchase SCX7-U universal crossover plate kits
- Welded trays for easy assembly
- If additional ballast capacity is required use ballast tray add-on kits
- Purchase rubber mats separately
- **Call or see our online assembly drawings for ballast equations.**
www.sitepro1.com

Part #	Face Width	Mounting Pipes	Footprint	Mats Required	Weight
RTP10-3RRU	10'-6"	(4) 2-3/8" x 174"	92" x 126"	6	1,050 lb
RTP12-3RRU	12'-6"	(4) 2-3/8" x 174"	92" x 150"	8	1,150 lb
RTP14-3RRU	14'-6"	(4) 2-3/8" x 174"	92" x 174"	12	1,375 lb
RTP10-3RRU-NP	10'-6"	No Pipes	92" x 126"	6	830 lb
RTP12-3RRU-NP	12'-6"	No Pipes	92" x 150"	8	930 lb
RTP14-3RRU-NP	14'-6"	No Pipes	92" x 174"	12	1,155 lb

T-Mobile Approved Rooftop Mounts

Non-Penetrating Tripod

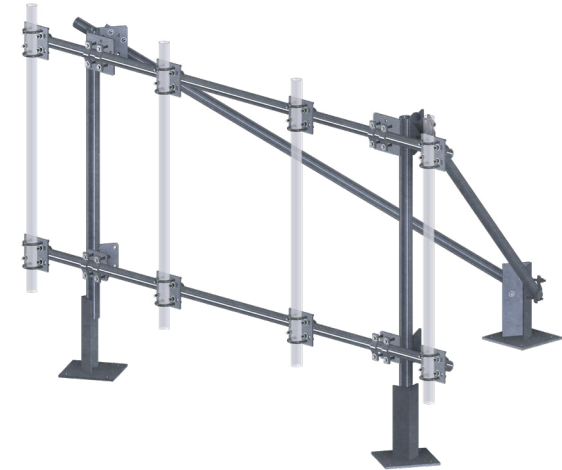


Description:

- Heavy-duty
- Welded trays for quick assembly
- Accepts 2-3/8" - 4-1/2" mast pipes
- Order pipe and rubber mats separately
- **Call or see our online assembly drawings for ballast equations www.sitepro1.com**

Part #	Description	Weight
TRPD-HD	Non-Penetrating Tripod	345 lb

Penetrating Rooftop Mounts



Description:

- 2-3/8" OD by 10'-6" or 12'-6" face widths hold up to four panel antennas
- Unique angle iron base eliminates weep hole and pitch pockets
- Include attaching hardware to mount up to four 2-3/8" or 2-7/8" OD antenna mounting pipes

Part #	Description	Weight
TP1-10	10' Single-Sector Penetrating Rooftop Mount	478 lb
TP1-12	12' Single-Sector Penetrating Rooftop Mount	495 lb

T-Mobile Approved Wall Mounts

Angle Wall Mount Kits

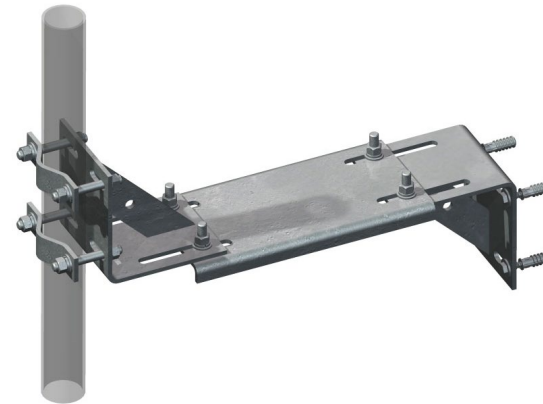


Description:

- Constructed from 1/4" angles
- Stand 3" or 4" off wall
- Kits include two brackets and U-bolts
- Order antenna mounting pipe separately
- Order hardware to mount to hollow or solid walls

Part #	Pipe OD	Angle Size	Mounting Holes	Weights
WMA238	2-3/8"	3" x 3" x 15"	11/16" on 12" centers	29 lb
WMA300	2-7/8"	3" x 3" x 15"	11/16" on 12" centers	29 lb
WMA312	3-1/2"	4" x 4" x 24"	11/16" on 21" centers	57 lb
WMA412	4-1/2"	4" x 4" x 24"	11/16" on 21" centers	57 lb

Universal Adjustable Wall Mount Brackets



Description:

- Extendable design adds flexibility to these wall mounts
- Use one bracket for lighter applications, or double up for a robust mounting solution
- Accept 3/4" to 2-3/8" OD antenna mounting pipes
- Order antenna mounting pipes separately
- Includes hardware for solid wall mounting (1/2" x 2-1/2" wedge anchors)
- Purchase hollow wall mount kit if required
- Hot-dip galvanized

Part #	Stand-Off	Description	Weight
WMU-24S	14" - 24"	Adjustable Wall Mount Bracket	25 lb

T-Mobile Approved Wall Mounts

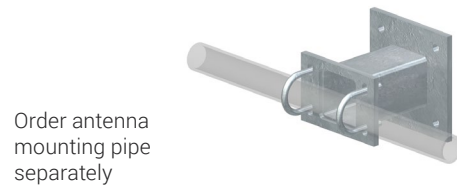
Standoff Wireless Wall Mounts



WWM02



WWM01



Order antenna
mounting pipe
separately

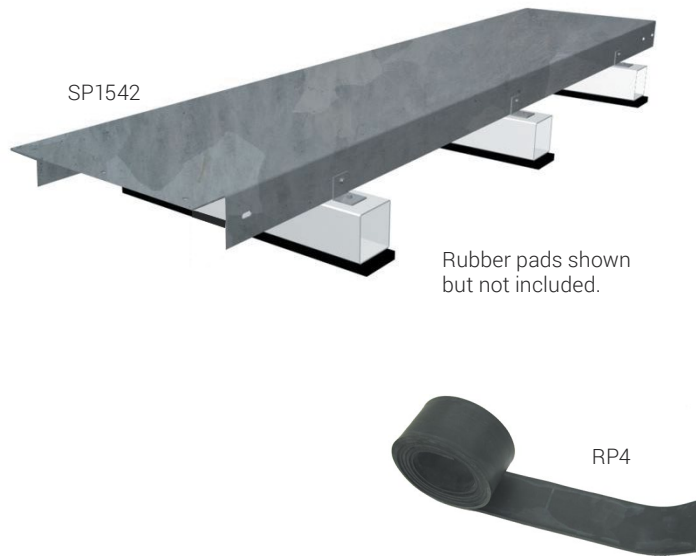
Description:

- Use to install panel or whip antennas
- Kits include U-bolts for 2-3/8" and 2-7/8" antenna mounting pipes
- Order antenna mounting pipe separately
- If mounting a 3-1/2" OD pipe, purchase U-bolts (UB1358) separately
- Wall plate is 1/2" thick by 8-1/2" square with four 11/16" holes on 6" centers
- Standoff is 4" x 3/16" square tube
- Order hardware to mount to hollow or solid walls

Part #	Stand Off	Weight
WWM02	2'	38 lb
WWM03	3'	50 lb
HWK58	Hollow Wall Mount Kit	11 lb
SWK58	Solid Wall Mount Kit	9.2 lb

T-Mobile Approved Rooftop Cable Kits

Rooftop Cable Kits



Description:

- Used to protect cables on rooftops
- Self-splicing cover eliminates need for splices
- Heavy-duty 12 gauge galvanized steel
- Each kit includes three sleepers and hardware
- Cover height is 3-1/2"
- SP1595 uses two covers side by side

Part #	# of Runs	Cover Size	Weight
SP1542	4	11-1/2" x 8'	58 lb
SP1543	8	21-1/2" x 8'	89 lb
SP1595	12	33" x 8'	140 lb
SLEEPER PAD			
Part #	Description	Size	Weight
RP4	Sleeper pads that provide protection for rooftops, and keep sleepers in position	4" x 10'	6 lb

Tall Rooftop Cable Kits



Description:

- Tall rooftop cable kits accept stackable snap-Ins
- Stack up to two 1-5/8" snap-Ins or three 7/8" snap-Ins
- Self-splicing cover eliminates need for splices
- Heavy-duty 12 gauge galvanized steel cover
- Each kit includes three sleepers and hardware
- Cover height is 8-1/4"
- SP1595D uses two covers side by side

Part #	# of Holes for Snap-Ins	Cover Size	Weight
SP1542D	4 (stack up to (8) 1-5/8" cables, or (12) 7/8" cables)	11-1/2" x 8'	84 lb
SP1543D	8 (stack up to (16) 1-5/8" cables, or (24) 7/8" cables)	21-1/2" x 8'	168 lb
SP1595D	12 (stack up to (24) 1-5/8" cables, or (36) 7/8" cables)	33" x 8'	190 lb

T-Mobile Approved Rooftop Cable Kits

Adjustable Splices for Rooftop Cable Kits



Description:

- Adjustable splices used to join sections of cable kits
- Use to make up to a 45° bend
- Hot-dip galvanized
- Includes hardware

Part #	Application	Weight
SP1573	0-45° splice, 4-Run Kits	4.0 lb
SP1574	0-45° splice, 8-Run Kits	10.5 lb
SP1597	0-45° splice, 12-Run Kits	40 lb

Rooftop Cable Run T-Stands



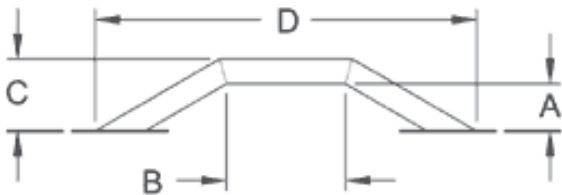
Description:

- Galvanized steel T-stands allow horizontal runs of coax across rooftops
- Base plates are 1/2" x 12" x 12" with 9/16" holes
- Come with ladder mounting hardware
- Cable ladder sold separately
- TL24-NP is sold without the horizontal pipe for custom applications; purchase 2-3/8" pipe separately
- Wedge anchors sold separately

Part #	# of Runs	Height	Width	Use with Ladder	Weight
TL24-14	4	24"	14.5"	WCL4	46 lb
TL24-20	6	24"	21"	WCL6	48 lb
TL24-NP	Custom	24"	Custom	Custom	41 lb

T-Mobile Approved Step-Over Kits

Aluminum Step-Over Kits



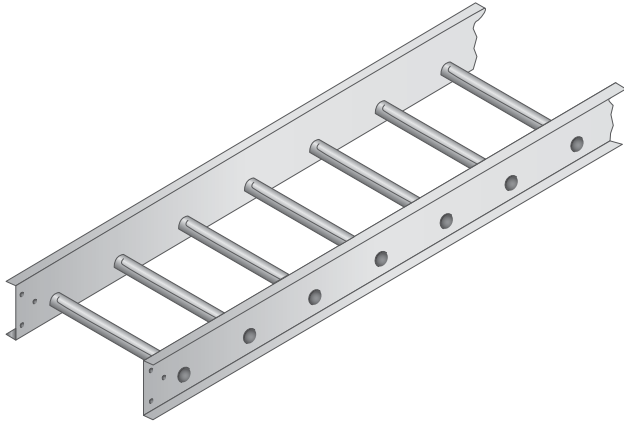
Description:

- Aluminum construction keeps the weight down
- Heliarc-welded heavy-duty aluminum frames are rust and maintenance free
- Non-skid treads on platform are self-cleaning
- Load rating is 1,200 lb

Part #	A	B	C	D	Width	Feet	Weight
UB10-24	10"	24"	13"	42.5"	36"	6" x 18"	55 lb
UB10-36	10"	36"	13"	48"	18"	6" x 18"	65 lb

T-Mobile Approved Cable Trays

Straight Aluminum Cable Tray



Description:

- 5" side rails with 4" loading depth
- 9" rung spacing
- Each 12' section includes splices and hardware
- 3/4" Lip on both sides

Part #	Size	Type	Weight
LT-06-4D	6" x 12'	Tray	15 lb
LT-VSS-06-A	6" x 12'	Cover	5 lb
LT-09-4D	9" x 12'	Tray	17 lb
LT-VSS-09-A	9" x 12'	Cover	7 lb
LT-12-4D	12" x 12'	Tray	19 lb
LT-VSS-12-A	12" x 12'	Cover	9 lb
LT-18-4D	18" x 12'	Tray	21 lb
LT-VSS-18-A	18" x 12'	Cover	11 lb
LT-24-4D	24" x 12'	Tray	23 lb
LT-VSS-24-A	24" x 12'	Cover	15 lb

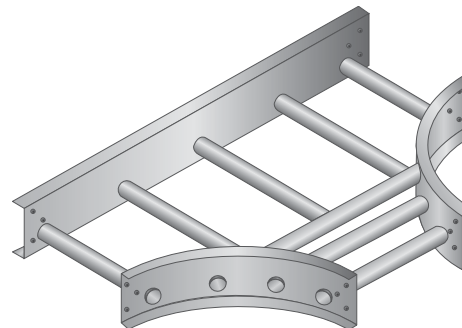
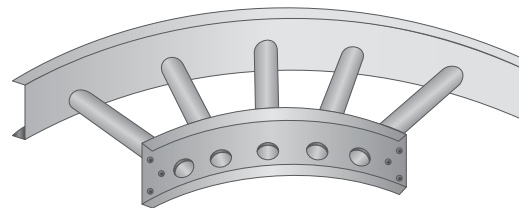
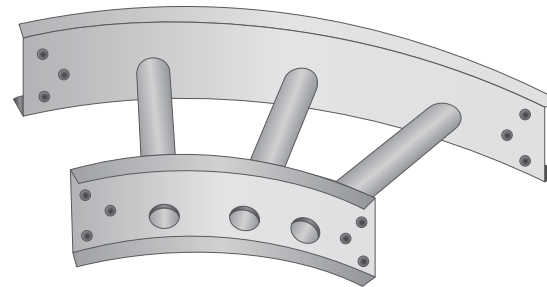
T-Mobile Approved Cable Trays

45° and 90° Horizontal Bends and Horizontal T-Junctions

Part #	Description	Type	Weight
LT-C45-06-4D	6" (45° Bend)	Tray	2 lb
LT-V45-06-A	6" (45° Bend)	Cover	1 lb
LT-C45-09-4D	9" (45° Bend)	Tray	2.5 lb
LT-V45-09-A	9" (45° Bend)	Cover	1.25 lb
LT-C45-12-4D	12" (45° Bend)	Tray	3 lb
LT-V45-12-A	12" (45° Bend)	Cover	1.5 lb
LT-C45-18-4D	18" (45° Bend)	Tray	4 lb
LT-V45-18-A	18" (45° Bend)	Cover	2 lb
LT-C45-24-4D	24" (45° Bend)	Tray	5 lb
LT-V45-24-A	24" (45° Bend)	Cover	2.5 lb
LT-C90-06-4D	6" (90° Bend)	Tray	4 lb
LT-V90-06-A	6" (90° Bend)	Cover	1.5 lb
LT-C90-09-4D	9" (90° Bend)	Tray	5 lb
LT-V90-09-A	9" (90° Bend)	Cover	2 lb
LT-C90-12-4D	12" (90° Bend)	Tray	6 lb
LT-V90-12-A	12" (90° Bend)	Cover	2.5 lb
LT-C90-18-4D	18" (90° Bend)	Tray	7 lb
LT-V90-18-A	18" (90° Bend)	Cover	4 lb
LT-C90-24-4D	24" (90° Bend)	Tray	8 lb
LT-V90-24-A	24" (90° Bend)	Cover	6 lb
LT-TJ-06-4D	6" (T-Junction)	Tray	8 lb
LT-VTJ-06-A	6" (T-Junction)	Cover	6 lb
LT-TJ-09-4D	9" (T-Junction)	Tray	9 lb
LT-VTJ-09-A	9" (T-Junction)	Cover	6.5 lb
LT-TJ-12-4D	12" (T-Junction)	Tray	10 lb
LT-VTJ-12-A	12" (T-Junction)	Cover	7 lb
LT-TJ-18-4D	18" (T-Junction)	Tray	11.5 lb
LT-VTJ-18-A	18" (T-Junction)	Cover	7.5 lb
LT-TJ-24-4D	24" (T-Junction)	Tray	13 lb
LT-VTJ-24-A	24" (T-Junction)	Cover	8 lb

Description:

- Each section includes splice plates and hardware
- Matching cover listed below



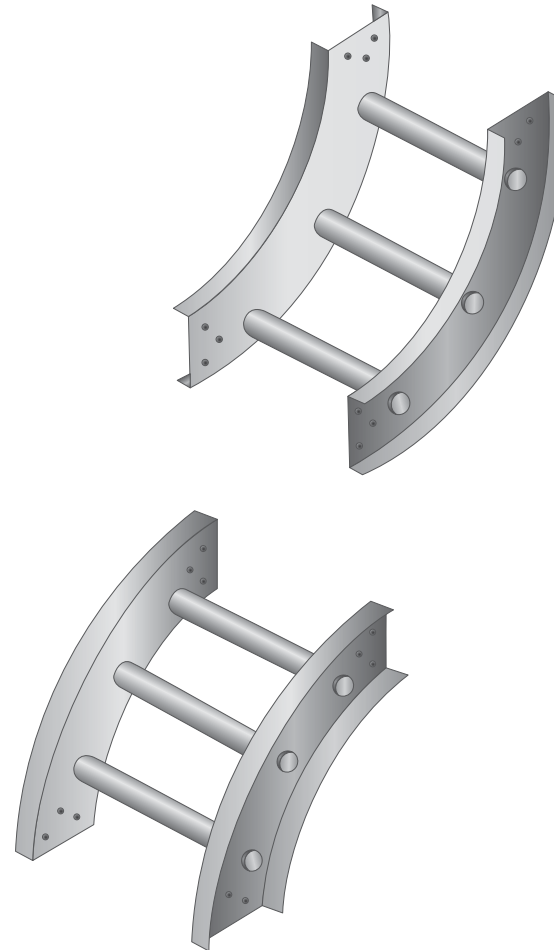
T-Mobile Approved Cable Trays

Inside and Outside 90° Vertical Risers

Part #	Description	Type	Weight
LT-RI90-06-4D	6" (Inside Vert. Riser)	Tray	4.5 lb
LT-VRI90-06-A	6" (Inside Vert. Riser)	Cover	1.5 lb
LT-RI90-09-4D	9" (Inside Vert. Riser)	Tray	5 lb
LT-VRI90-09-A	9" (Inside Vert. Riser)	Cover	2 lb
LT-RI90-12-4D	12" (Inside Vert. Riser)	Tray	6 lb
LT-VRI90-12-A	12" (Inside Vert. Riser)	Cover	2.5 lb
LT-RI90-18-4D	18" (Inside Vert. Riser)	Tray	7 lb
LT-VRI90-18-A	18" (Inside Vert. Riser)	Cover	3.5 lb
LT-RI90-24-4D	24" (Inside Vert. Riser)	Tray	8 lb
LT-VRI90-24-A	24" (Inside Vert. Riser)	Cover	4.5 lb
LT-RO90-06-4D	6" (Outside Vert. Riser)	Tray	4.5 lb
LT-VR090-06-A	6" (Outside Vert. Riser)	Cover	1.5 lb
LT-RO90-09-4D	9" (Outside Vert. Riser)	Tray	5 lb
LT-VR090-09-A	9" (Outside Vert. Riser)	Cover	2 lb
LT-RO90-12-4D	12" (Outside Vert. Riser)	Tray	6 lb
LT-VR090-12-A	12" (Outside Vert. Riser)	Cover	2.5 lb
LT-RO90-18-4D	18" (Outside Vert. Riser)	Tray	7 lb
LT-VR090-18-A	18" (Outside Vert. Riser)	Cover	3.5 lb
LT-RO90-24-4D	24" (Outside Vert. Riser)	Tray	8 lb
LT-VR090-24-A	24" (Outside Vert. Riser)	Cover	4.5 lb

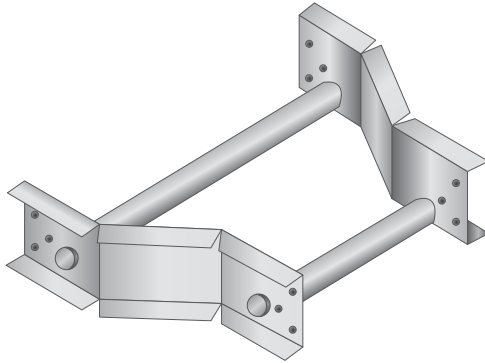
Description:

- Each section includes splice plates and hardware
- Matching cover listed below



T-Mobile Approved Cable Trays

Straight Reducers



Description:

- Used to mate smaller width tray to larger widths
- Matching covers listed below

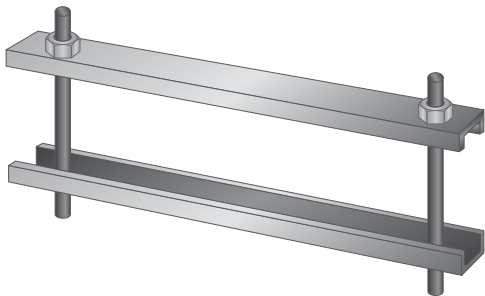
Part #	Description	Type	Weight
248-12ST-06	12" to 6" Reducer	Tray	1.2 lb
FS28-12ST-06	12" to 6" Reducer	Cover	0.5 lb
248-12ST-09	12" to 9" Reducer	Tray	1.3 lb
FS28-12ST-09	12" to 9" Reducer	Cover	0.6 lb
248-18ST-12	18" to 12" Reducer	Tray	1.8 lb
FS28-18ST-12	18" to 12" Reducer	Cover	0.8 lb
248-24ST-12	24" to 12" Reducer	Tray	1.8 lb
FS28-24ST-12	24" to 12" Reducer	Cover	1.0 lb
248-24ST-18	24" to 18" Reducer	Tray	1.8 lb
FS28-24ST-18	24" to 18" Reducer	Cover	1.1 lb

T-Mobile Approved Cable Trays

Channel Type Cover Connectors

Description:

- Heavy-duty cover hold down
- Use in high wind applications
- Minimum of three cover connectors required per 12' cable tray section

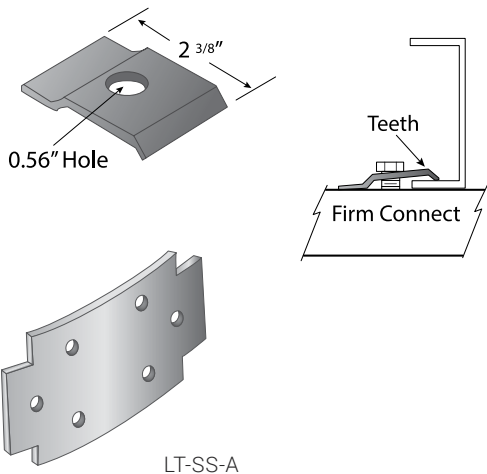


Part #	Description	Weight
248-06-DC	6" Cover Connector	1.2 lb
248-09-DC	9" Cover Connector	1.4 lb
248-12-DC	12" Cover Connector	1.6 lb
248-18-DC	18" Cover Connector	1.8 lb
248-24-DC	24" Cover Connector	2.0 lb

Ladder Hold-Down Clamp and Splice Plates

Description:

- Hold-down clamp accepts 1/2" hardware
- Splice plates are included with ladder sections, but also available separately; sold in pairs and include hardware



Part #	Description	Weight
9131	Hold-Down Clamp	0.1 lb
LT-SS-A	Pair of Straight Splices	1.8 lb

T-Mobile Approved Rooftop Step-Over Kits

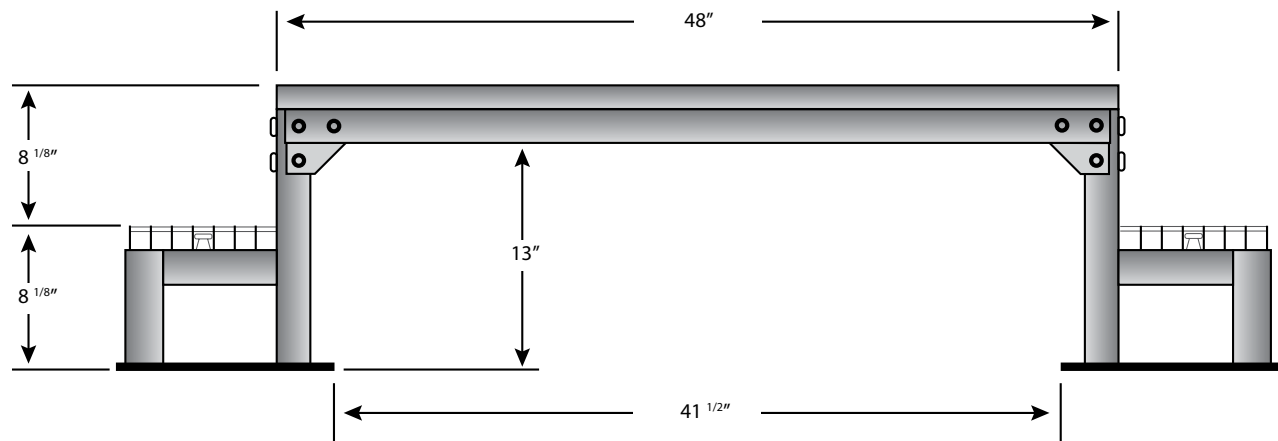
Steel Step-Over Kits



Description:

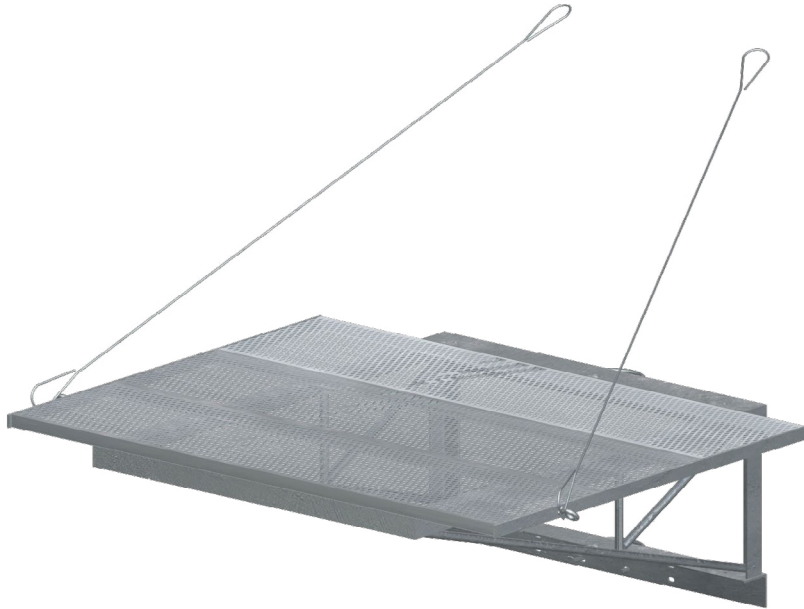
- Sturdy steel construction
- Minimal bolt-together assembly
- 24" wide safety grated non-skid surfaces
- All parts hot-dip galvanized

Part #	Description	Weight
STEP48	Galvanized Steel Step-Over Kit	175 lb



T-Mobile Approved Ice Shields

Ice Shields for Microwave Dishes



Description:

- Protect antennas from falling ice
- Mount to 4-1/2" pipe mount used for dish; 8' and 10' ice shields require separate 4-1/2" OD pipe mounts
- Kits include ice shield and mounting hardware, do not include pipe mount
- Other sizes available

Part #	Antenna Diameter	Size	Weight
ISMD4	4'	48" x 62"	325 lb
ISMD6	6'	72" x 62"	365 lb
ISMD8	8'	96" x 62"	445 lb
ISMD10	10'	120" x 62"	500 lb

T-Mobile Approved Equipment Platforms

Ground Solution - MEP88-8SH32S1C

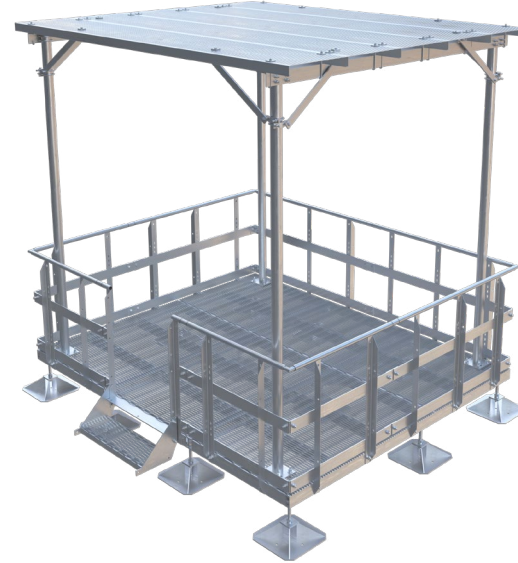


Description:

- 8' x 8' platform
- 8' x 10' full canopy
- Handrails
- One step and six 12" x 12" small footpads

Part #	Size	Components	Sub Assembly
MEP88-8SH32S1C	8' x 8'	(2) 4' x 8' Frame (6) Small Footpad (6) 4' Handrail (2) 2' Handrail (1) Single Step (1) 4' Entrance (1) 8' x 10' Platform Cover	MEP48 MPAD-S MRAIL-4 M-RAIL-2 MSTEP-1LD MOPEN-4 MPCOV810

Ground Solution - MEP1012-6LHS1C



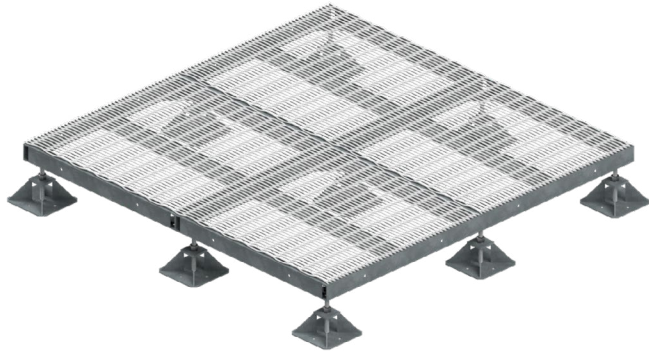
Description:

- 10' x 12' platform
- 10' x 12' full canopy
- Handrails
- One step and twelve 18" x 18" large footpads

Part #	Size	Components	Sub Assembly
MEP1012-6LHS1C	10' x 12'	(3) 4' x 6' Frame (3) 4' x 4' Frame (12) Large Footpad (4) 6' Handrail (4) 4' Handrail (1) 4' Entrance (5) Straight Splice (4) Corner Splice (1) Single Step (1) 10' x 12' Platform Cover	MEP46 MEP44 MPAD-L MRAIL-6 MRAIL-4 MOPEN-4 MSPLICE-S MSPLICE-C MSTEP-1 MPCOV1012

T-Mobile Approved Equipment Platforms

8' x 8' Platform

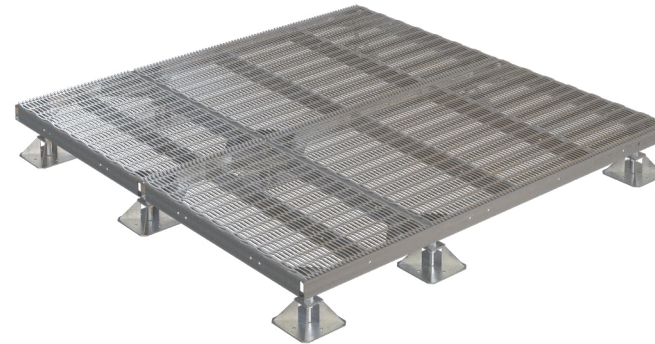


Description:

- Total Frame Capacity
 - Distributed Deadload 22,400 lb
 - Distributed Windload 5,980 lb
- Channel Capacity (Critical Load Point)
 - Concentrated Deadload 4,000 lb
 - Concentrated Uplift 4,000 lb
- Expanded Metal Capacity (Critical Load Point)
 - 2' Panel Deadload 1,000 lb
 - 2' Panel Uplift 1,000 lb

Part #	Size	Components	Sub Assembly
MEP88-4S	8' x 8'	(4) 4' x 4' Frame (9) Small Footpads	MEP44 MPAD-S

10' x 10' Platform



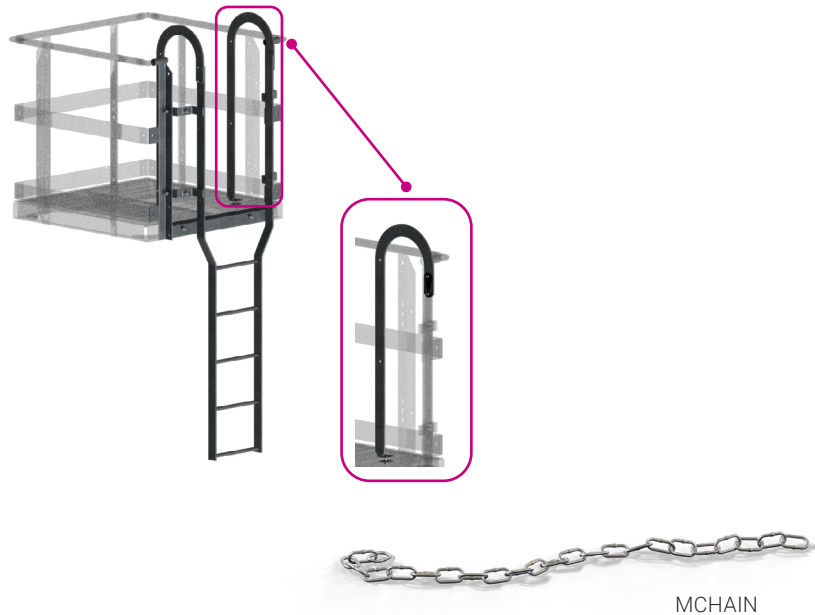
Description:

- Total Frame Capacity
 - Distributed Deadload 20,050 lb
 - Distributed Windload 5,490 lb
- Channel Capacity (Critical Load Point)
 - Concentrated Deadload 2,500 lb
 - Concentrated Uplift 2,500 lb
- Expanded Metal Capacity (Critical Load Point)
 - 2' Panel Deadload 1,200 lb
 - 2' Panel Uplift 1,200 lb

Part #	Size	Components	Sub Assembly
MEP1010-7S	10' x 10'	(2) 5' x 7' Frame, (2) 5' x 3' Frame, (9) Small Footpad	MEP57, MEP53, MPAD-S

T-Mobile Approved Equipment Platforms

Ladder Kits



Description:

- Straight ladders require limited real estate
- Feature anti-slip rungs
- Designed with 16" wide climb path with 24" top opening for easy access
- Optional back grab rail available
- MOPEN-4 must be used for ladder option

Part #	Width	Description
MLADDER-1	16"	1 Rung Ladder Kit
MLADDER-3	16"	3 Rung Ladder Kit
MLADDER-5	16"	5 Rung Ladder Kit
MBRAIL		Backing Rail Kit
MCHAIN		Chain Guard Kit

Step Kit without Handrails



Description:

- Fixed steps allow for a standard 7" rise
- Floating designs do not require ground connection
- Provide access onto a level deck
- Do not require MOPEN-4

Part #	Width	Platform Deck Height	Description
MSTEP-1LD	35-1/2"	9" - 14"	1-Step Direct Connect Stair Kit
MSTEP-2LD	35-1/2"	14" - 23"	2-Step Direct Connect Stair Kit

T-Mobile Approved Equipment Platforms

Step and Access Kits with Handrails



Description:

- Stairs allow for 5" - 7" vertical adjustment per step
- MOPEN-4 must be used for access points and handrail attachment
- Includes stairs, handrails, and hardware on 2-step, 3-step, and 4-step stairs

Part #	Width	Platform Deck Height	Description
MSTEP-1	35-1/2"	9" - 14"	Fixed Height Stair Kit
MSTEP-2	32"	14" - 23"	2-Step Adjustable Stair Kit
MSTEP-3	32"	19" - 34"	3-Step Adjustable Stair Kit
MSTEP-4	32"	24" - 43"	4-Step Adjustable Stair Kit
MOPEN-4	35-1/2"		Access Point/Finishing Kit

T-Mobile Approved Handrails

Access Point/Finishing Kit



Description:

- MOPEN-4 must be used for handrail attachment
- Splice kit required at each mating connection

Part #	Description
MOPEN-4	Access Point/Finishing Kit

Handrail Kits



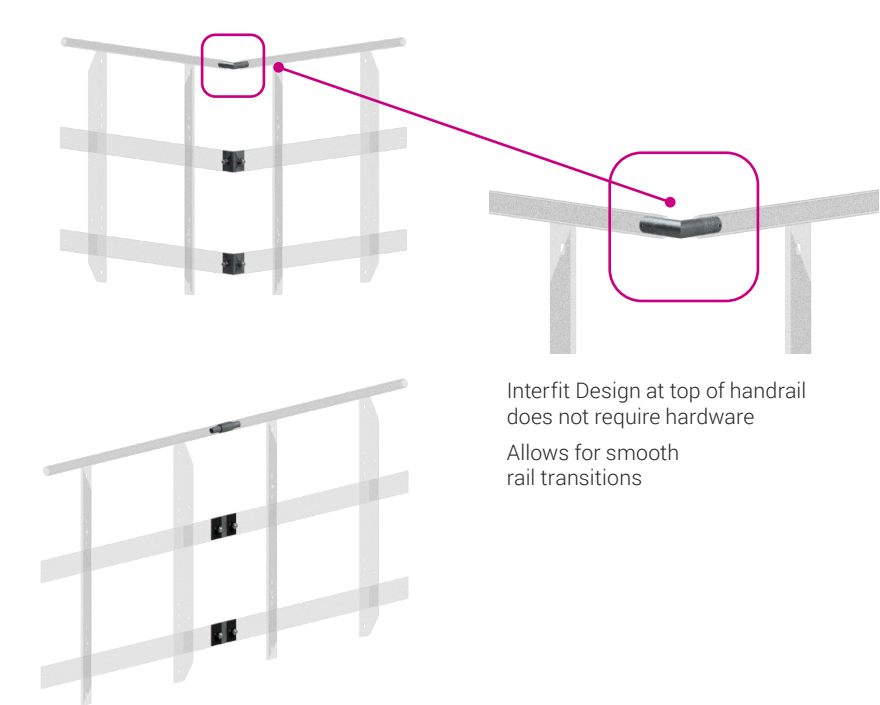
Description:

- Select from multiple options to achieve ideal fit
- Handrails designed to accept additional unistrut for equipment mounting
- IBC and OSHA compliant for maintenance traffic

Part #	Size	Description
MRAIL-2	2' x 42"	2' Handrail Kit
MRAIL-4	4' x 42"	4' Handrai Kitl
MRAIL-6	6' x 42"	6' Handrail Kit

T-Mobile Approved Equipment Platforms

Splice Connection Kits



Description:

- Splice kit required at each mating connection
- Kits include hardware for top, mid, and kick-plate connection

Part #	Description
MSPLICE-C	Corner Connection Kit
MSPLICE-S	Straight Connection Kit

Square Strut



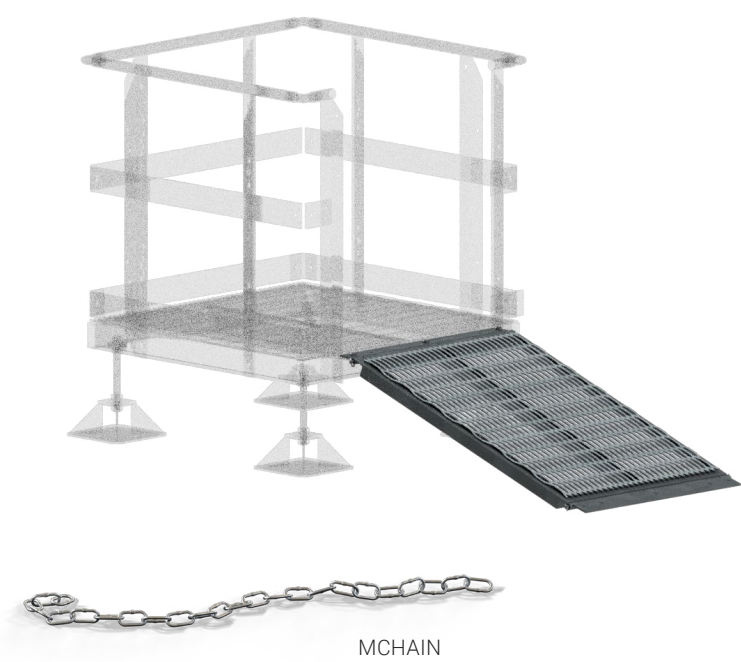
Description:

- Add strut to handrail to easily adapt to an equipment rack

Part #	Length
UNT10	10'

T-Mobile Approved Equipment Platforms

Ramp Kit



Description:

- Hinged design folds up when not in use to minimize use of real estate
- Capacity of 2,000 lb to allow for dolly and cabinet entry
- MRAMP-5 does not require MOPEN-4 for connection
- Recommended deck height of 4" - 19.5" (not to exceed 20 degree slope)
- Maximum allowable deck height 26" (not to exceed 30 degree slope)
- Use chain guard kit to secure access point and lock ramp in place when in closed position
- Kit includes 4' - 3" chain and hardware

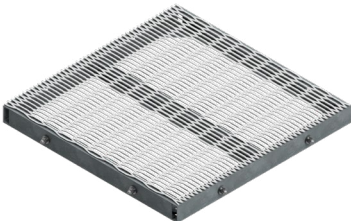
Part #	Width	Platform Deck Height	Description
MRAMP-5	35-1/2"	4" - 26"	Adjustable Ramp Kit
MCHAIN	Chain Guard Kit		

T-Mobile Approved Equipment Platforms

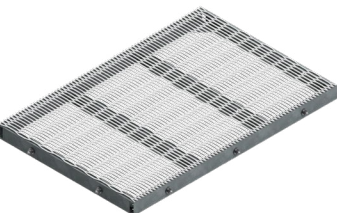
8' x 8' Platform



MEP42



MEP44



MEP46



MEP48

Description:

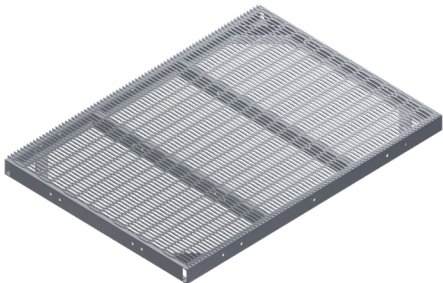
- Build a custom platform by combining standard sections to obtain the layout and features needed for your application
- Welded design for strength, durability, and ease of installation
- Standard hole spacing
- Base withstands 6,000 - 8,000 lb of distributed load
- Manufactured with structural grade #5 expanded metal

Part #	Size	Description
MEP42	4' x 2'	Modular Equipment Platform Base
MEP44	4' x 4'	Modular Equipment Platform Base
MEP46	4' x 6'	Modular Equipment Platform Base
MEP48	4' x 8'	Modular Equipment Platform Base
MEP53	5' x 3'	Modular Equipment Platform Base
MEP57	5' x 7'	Modular Equipment Platform Base

NEW



MEP53

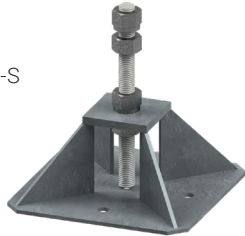


MEP57

T-Mobile Approved Equipment Platforms

Footpads and Leveling Kit (for sloped surfaces)

MPAD-S



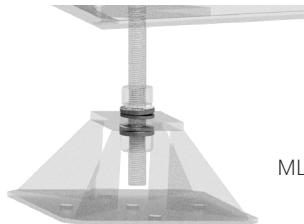
MPAD-L



MPAD-EX48



MLEVEL



Description:

MPAD

- One footpad is required at each corner and at each base section connection point
- For additional platform height add footpad extension kits and footpad bracing kits
- Rubber mats recommended for rooftop applications
- Extension bracing kit includes the two end plates with attaching hardware; order bulk angle separately and field cut the diagonal braces for your application

Part #	PAD Size	Description	Deck Height Adjustment
MPAD-S	12" x 12"	Small Footpad	13" - 18-1/2"
MPAD-L	18" x 18"	Large Footpad	13" - 18-1/2"
MPAD-EX33	N/A	Footpad Extension	27-1/2" - 32-1/2"
MPAD-EX48	N/A	Footpad Extension	42-1/2" - 47-1/2"
MPAD-BRC	N/A	Footpad Extension Bracing Kit	N/A

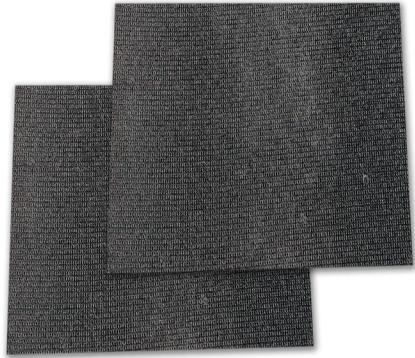
MLEVEL

- Allows for a 3 degree adjustment (5/8" per foot)
- Beveled washer designed to self level as you tighten connection

Part #	Description
MLEVEL	3 degree Footpad Leveling Kit

T-Mobile Approved Equipment Platforms

Rubber Mats and Standard & Extended Jacks



Description:

MMAT

- Each footpad and jack requires rubber mats for rooftop applications
- Designed to protect the integrity of rooftop
- Manufactured from UV-resistant 1/2" thick rubber

MJACK and MJACK-EXT

- Jack must be placed on perimeter of structure only
- MJACK cannot be combined with center supports
- Base combinations with interior connections use MPAD support only
- Rubber mats recommended for rooftop applications

Part #	Description
MMAT	1/2" x 18" x 18"

Part #	Size	Description	Deck Height Adjustment
MJACK	12" x 12"	5,000 lb Side C Crank Jack w/ Small Footpad	13" - 28"
MJACK-EXT	18" x 18"	5,000 lb Side Crank Jack Extended w/ Large Footpad	28" - 43"



T-Mobile Approved Ice Shields

Platform Cover Kits



Description:

- Shield equipment from falling ice and debris
- Allow for 9' cabinet height

Part #	Description	Weight
MPCOV610	6' x 10' Equipment Platform Cover Kit	895 lb
MPCOV810	8' x 10' Equipment Platform Cover Kit	930 lb
MPCOV812	8' x 12' Equipment Platform Cover Kit	1,020 lb
MPCOV1010	10' x 10' Equipment Platform Cover Kit	1,025 lb
MPCOV1012	10' x 12' Equipment Platform Cover Kit	1,139 lb

Platform Canopies



Now with pre-cut and pre-drilled angles

Description:

- Protect cabinets and cables from falling debris or ice
- Constructed from 4" x 4" x 1/4" angles and 12 gauge grip strut
- Available with direct burial pipe columns or base shoe pipe columns with wedge anchors
- Easy to install; no field cutting or drilling required

Part #	Size	Pipes	Weight
COV610	10' x 6'	3-1/2" OD, 13'-4" Burial	715 lb
COV810	10' x 8'	3-1/2" OD, 13'-4" Burial	805 lb
COV1010	10' x 10'	3-1/2" OD, 13'-4" Burial	905 lb
COV1012	10' x 12'	3-1/2" OD, 13'-4" Burial	975 lb
COV612	12' x 6'	3-1/2" OD, 13'-4" Burial	755 lb
COV812	12' x 8'	3-1/2" OD, 13'-4" Burial	860 lb
COV610-B	10' x 6'	3-1/2" OD, 10'-6" Base Shoe	690 lb
COV810-B	10' x 8'	3-1/2" OD, 10'-6" Base Shoe	780 lb
COV1010-B	10' x 10'	3-1/2" OD, 10'-6" Base Shoe	880 lb
COV1012-B	10' x 12'	3-1/2" OD, 10'-6" Base Shoe	950 lb
COV612-B	12' x 6'	3-1/2" OD, 10'-6" Base Shoe	730 lb
COV812-B	12' x 8'	3-1/2" OD, 10'-6" Base Shoe	835 lb

T-Mobile Approved Cable Ladders

Cable Ladders



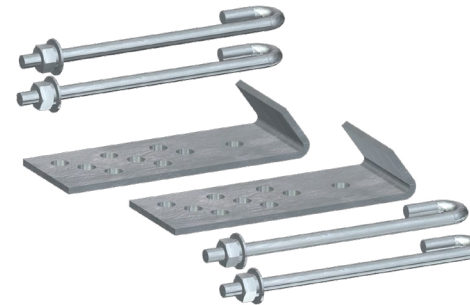
Description:

Cable Ladders

- Each 20' section includes six waveguide brackets that are pre-punched for snap-in hangers and butterfly hangers
- Hole pattern allows 40" (6 brackets per section) or 60" (4 brackets per section) spacing
- 1-3/4" x 1-3/4" x 1/8" side rails
- Each kit includes splices to attach additional sections
- All parts are hot-dip galvanized
- **Purchase attachment kits separately (minimum of two kits required per 20' ladder section)**

Universal Ladder Attachment Kit

- Used to attach cable ladders to towers
- Use a minimum of two kits per 20' section of ladder
- Kit includes two formed plate brackets and four J-bolt assemblies
- All parts are hot-dip galvanized

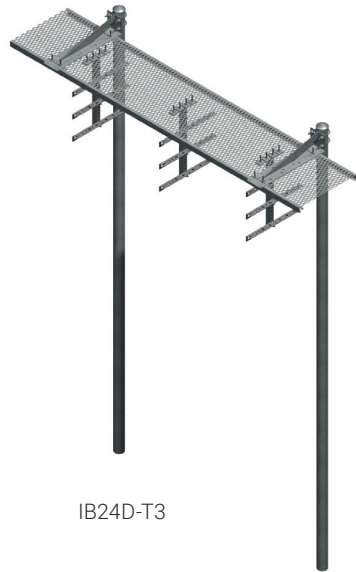


Part #	# of Runs	Length	Width	Weight
WCL4	4	20'	14"	73 lb
WCL6	6	20'	20-5/8"	77 lb
WCL9	9	20'	29-5/8"	82 lb
WCL12	12	20'	38-5/8"	88 lb

Part #	Application	Weight
CLK-U	Universal (angles 2" - 5" & pipes 1" - 4-1/2")	5 lb

T-Mobile Approved Ice Bridges

12" and 24" Grip-Strut Ice Bridge Kits With Triple-Tee Trapeze



IB24D-T3



IB12D-T3

Description:

IB24D-T3 and IB24B-T3

- Available in heavy-duty 12 gauge or lightweight 14 gauge grip strut
- Versatile triple-tee trapeze with all hardware included
- 24 runs
- Easy installation
- Three trapeze kits per bridge
- Complete kits

IB12D-T3 and IB12B-T3

- Versatile triple-tee trapeze with all hardware included
- 12 runs
- Easy installation
- Three trapeze kits per bridge
- Complete kits

Part #	Size	Poles	Trapeze	# of Runs	Weight
IB24D-T3	24" x 10', 12 Gauge	3-1/2" x 13'-4" Burial	Triple Tee	24	390 lb
IB24B-T3	24" x 10', 12 Gauge	3-1/2" x 10'-6" Base Shoe	Triple Tee	24	370 lb
IB12D-T3	12" x 10'	3-1/2" x 13'-4" Burial	T-Bracket, 3 Level	12	315 lb
IB12B-T3	12" x 10'	3-1/2" x 10'-6" Base Shoe	T-Brackets, 3 Level	12	295 lb

T-Mobile Approved Ice Bridges

24" Grip-Strut Ice Bridge Kits With Vertical T-Bracket Trapeze



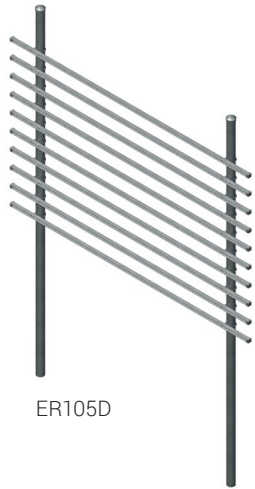
Description:

- Vertical T-bracket trapeze for easy installation
- Accept 18 snap-ins and can be installed side by side for 36 runs
- Three trapeze kits per bridge
- Complete kits

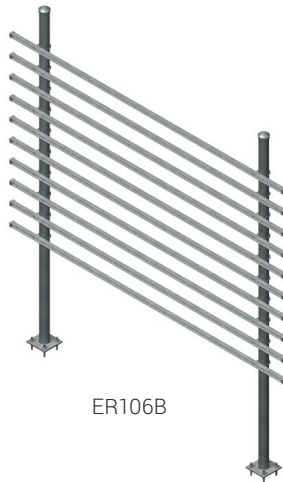
Part #	Size	Poles	Trapeze	# of Runs	Weight
IB24D-V	24" x 10'	3-1/2" x 13'-4" Burial	VT-Brackets	18	365 lb

T-Mobile Approved Equipment Platform Accessories

Equipment Racks



ER105D



ER106B

Description:

ER105D and ER106B

- Complete kits for all your equipment mounting needs
- Heavy-duty construction
- Include ten 10' x 12 gauge galvanized unistrut rails
- Designed to space unistrut at 8" typical spacing but spacing is freely adjustable
- Available with direct burial or base shoe pipe columns
- Call for custom mounting solutions or kits

HF-556

- 2-7/8" x 6' pipe risers
- Five levels of 1-5/8" x 5' square strut
- Galvanized

MER8-H and MER8-P

- Complete kits for all equipment mounting needs
- Heavy duty construction
- Include two 10' galvanized unistrut rails
- Designed to space unistrut at 6" typical spacing but spacing is adjustable



HF-556



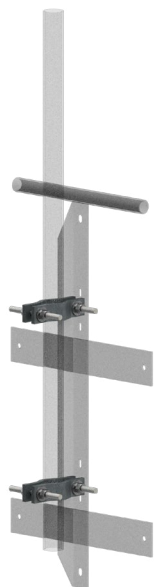
MER8-P

Part #	Pipes	Weight
ER105D	3-1/2" x 13' 4" Direct Burial Pipes	420 lb
ER106B	3-1/2" x 10' Base Shoe Pipes	400 lb
HF-556	H-Frame Equipment Rack	117 lb

Part #	Overall Size	Deck Length	Description
MER8-H	8'	8'	H-Frame with handrail attachment kit
MER8-P	8'	8'	H-Frame with direct platform attachment kit

T-Mobile Approved Equipment Platform Accessories

Pipe Mount Kit

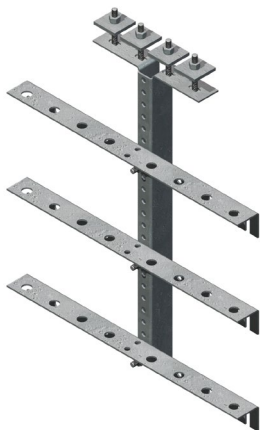


Description:

- Easily attach GPS, microwave, panel antennas and specialized stealth to handrail
- Mount pipe mast direct to handrail
- Accepts 1-1/2" to 5" pipes
- Includes top and bottom clamp set and all hardware

Part #	Pipe Size	Clamp Thickness	Threaded Rod	Kit Quantity
MPIPEM	1-1/2" - 5"	1/2"	5/8" x 18"	Kit of 2

Triple-Tee Trapeze Kits



Description:

- Easily installed and allows for adjustment of the angle brackets
- Allows for neat installation by aligning cables with entry panel
- Heavy-duty version resists wobble
- Hot-dip galvanized

Part #	# of Runs	Size	Weight
T24K-3	24	22" x 24-1/2"	18 lb

T-Mobile Approved Ice Bridges

Platform Ice Bridge Kits



MIBP-2410

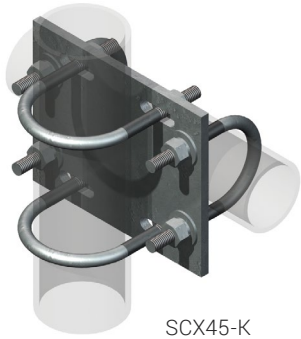
Description:

- Shield equipment from falling ice
- Allow for 9' cabinet height
- Can be used with or without platform handrails
- Expanded metal channels can be cut down for use with smaller platforms

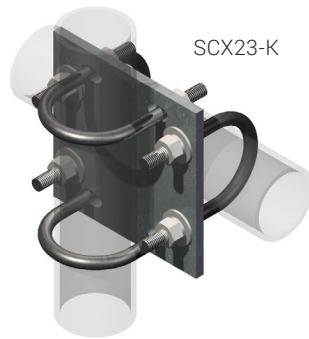
Part #	Description	Weight
MIBP-2410	24" x 10' Platform Ice Bridge Kit	375 lb
MIBP-2412	24" x 12' Platform Ice Bridge Kit	385 lb
MIBP-2410L	24" x 10' x 10' L-Shaped Platform Ice Bridge Kit	595 lb

T-Mobile Approved Reinforcement Plates

Crossover Plate Kits



SCX45-K



SCX23-K

Description:

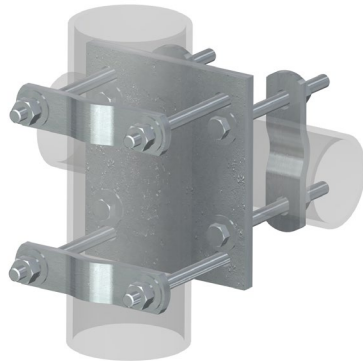
- Heavy-duty crossover plate kits are used to attach pipes in 90° fashion
- U-bolts and hardware included
- Hot-dip galvanized

Part #	Smaller Pipe Size	Larger Pipe Size	Thickness	Quantity
SCX1-K	2-3/8"	2-3/8"	3/8"	1 Plate, 4 U-Bolts & Hardware
SCX2-K	2-3/8"	2-7/8"	3/8"	1 Plate, 4 U-Bolts & Hardware
SCX3-K	3-1/2"	3-1/2"	3/8"	1 Plate, 4 U-Bolts & Hardware
SCX4-K	2-3/8"	4-1/2"	3/8"	1 Plate, 4 U-Bolts & Hardware
SCX6-K	2-7/8"	4-1/2"	1/2"	1 Plate, 4 U-Bolts & Hardware
SCX7-K	3-1/2"	4-1/2"	1/2"	1 Plate, 4 U-Bolts & Hardware

NEW

T-Mobile Approved Reinforcement Plates

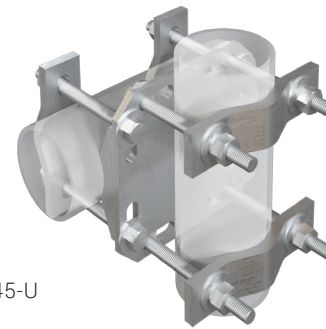
Universal Crossover Plate Kits



SCX7-U

Description:

- Accommodate the new sizes of antenna pipes being used today
- Universal feature removes any uncertainty in the field
- All hardware included
- Hot-dip galvanized

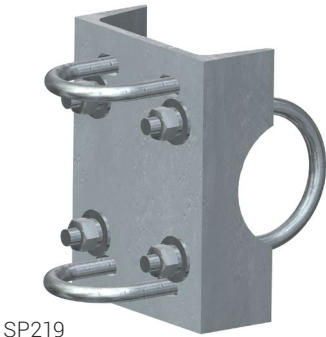


FCX45-U

Part #	Smaller Pipe Size	Larger Pipe Size	Thickness (Hdw Size)	Quantity
SCX6-U	1-1/2" to 2-7/8"	2-1/2" - 6"	1/2" (1/2")	1 Plate, 4 V-Clamps & Hardware
SCX7-U	1-1/2" to 3-1/2"	1-1/2" to 4-1/2"	1/2" (1/2")	1 Plate, 4 V-Clamps & Hardware
SCX3-U	1-1/2" to 4-1/2"	1-1/2" to 4-1/2"	3/8" (1/2")	1 Plate, 4 V-Clamps & Hardware
FCX45-U	1-1/2" - 4-1/2"	1-1/2" - 4-1/2"	3/8" (5/8")	1 Plate, 4 V-Clamps & Hardware

T-Mobile Approved Hardware

Pipe Support Cross Plates



Description:

- Heavy-duty saddle design prevents pipe rotation
- U-bolts included
- Hot-dip galvanized

Part #	Smaller Pipe Size	Larger Pipe Size	Contents
SP219	2-3/8"	3-1/2"	1 Bracket, 4 U-bolts
SP219-H	2-7/8"	3-1/2"	1 Bracket, 4 U-bolts

T-Mobile Approved Pipe

Bulk Pipe



Description:

- Plain-end hot-dip galvanized pipe
- ASTM A53 Grade B Schedule 40
- Other sizes available, please inquire

Part #	Length	OD x Length (in)
P296	8'-0"	2-3/8" x 96"
P2126	10'-6"	2-3/8" x 126"
P2150	12'-6"	2-3/8" x 150"
P2174	14'-6"	2-3/8" x 174"
P2252	21'-0"	2-3/8" x 252"
P3096	8'-0"	2-7/8" x 96"
P30126	10'-6"	2-7/8" x 126"
P30150	12'-6"	2-7/8" x 150"
P30174	14'-6"	2-7/8" x 174"
P30252	21'-0"	2-7/8" x 252"
P396	8'-0"	3-1/2" x 96"
P3150	12'-6"	3-1/2" x 150"
P3150		3-1/2" x 150"
P3160	13'-4"	3-1/2" x 160"
P3174	14'-6"	3-1/2" x 174"
P3216	18'-0"	3-1/2" x 216"
P3252	21'-0"	3-1/2" x 252"
P472	6'-0"	4-1/2" x 72"
P4126	10'-6"	4-1/2" x 126"
P4252	21'-0"	4-1/2" x 252"
P3252-80	21'	3-1/2" x 252"

T-Mobile Approved Ice Bridge Components

Pipe Columns



Description:

- 3-1/2" OD pipes, hot-dip galvanized
- Base shoe pipes include anchors and hardware
- 8" x 8" base with 11/16" holes on 5-1/2" centers
- Purchase post caps separately

Part #	Type	Size	Weight
P3160	Direct Burial	3-1/2" x 13'-4"	102 lb
P3174	Direct Burial	3-1/2" x 14'-6"	111 lb
P3216	Direct Burial	3-1/2" x 18'	138 lb
P3252	Direct Burial	3-1/2" x 21'	161 lb
SP126	Base Shoe	3-1/2" x 10'-6"	95 lb

T-Mobile Approved Ice Bridge Components

Bolt-On Base Shoe

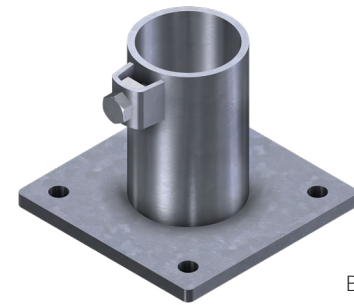


Description:

- For use with 3-1/2" pipes
- 12" height x 6" width for stability
- Kit includes U-bolts
- Purchase wedge anchors separately (p. 161)
- Hot-dip galvanized

Part #	Description	Weight
BSA300	Bolt-On Base Shoe	12.5 lb
SWA585	5/8" x 5" SS Wedge Anchors (3 req'd)	2.3 lb
GWA585	5/8" x 5" Galvanized Wedge Anchors (3 req'd)	2.3 lb

Base Shoe Feet



BSF35

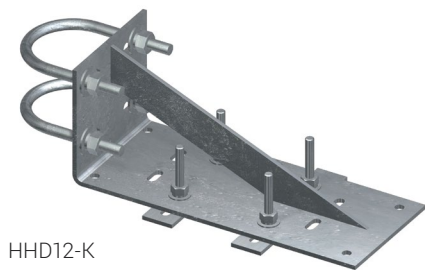
Description:

- Convert any 2-7/8" or 3-1/2" OD pipe into a base shoe post
- 8" x 8" x 1/2" base plate with 6" hole spacing
- 11/16" holes for 5/8" anchors (sold separately)
- Hot-dip galvanized

Part #	Description	Weight
BSF35	Base Shoe Foot for 3-1/2" OD Pipe	15.0 lb

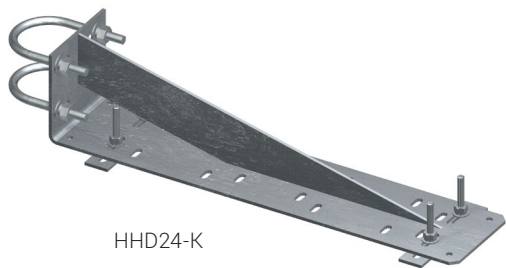
T-Mobile Approved Ice Bridge Components

Universal Cantilevers



Description:

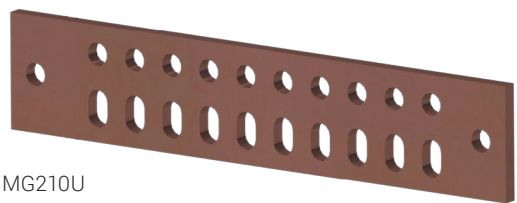
- Universal hole pattern allows use on any type of channel
- For use with 3-1/2" OD pipe columns
- Kits include all hardware, U-bolts, and backing plates



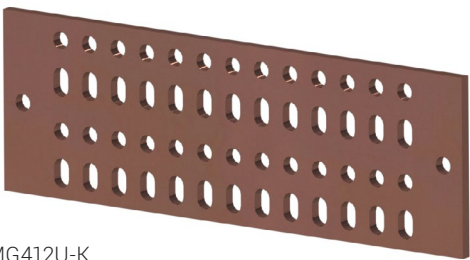
Part #	Channel Width	Description	Weight
HHD12-K	12"	Complete Cantilever Kit	11.3 lb
HHD24-K	24"	Complete Cantilever Kit	17.0 lb

T-Mobile Approved Ground Bars

MG210U and MG412U



MG210U



MG412U-K

Description:

MG210U

- Accepts 3/8" lugs
- 20 holes allow up to 10 runs
- Universal hole pattern accepts two-hole lugs with 3/4" to 1" hole spacing
- Kits include insulators and stainless steel mounting brackets

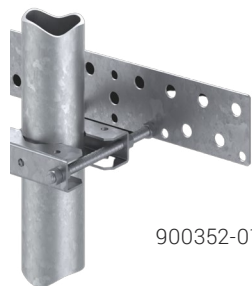
MG412U

- Accepts 3/8" lugs
- 52 holes allow up to 26 runs with two-hole lugs
- Universal hole pattern accepts two-hole lugs with 3/4" to 1" hole spacing
- Kits include insulators and stainless steel mounting brackets

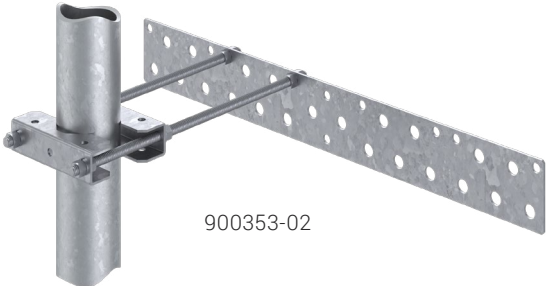
Part #	Description	Weight
MG210U	1/4" x 2" x 10" Ground Bar Only	1.4 lb
MG412U-K	1/4" x 4" x 12" Ground Bar with Insulators and Brackets	4.2 lb

T-Mobile Approved Cable Support Bars

Cable Support Bar



900352-01



900353-02

Description:

- Galvanized steel construction
- Mounts to round legs 2-3/8" to 4-1/2" in diameter
- Lower weight than competitive alternatives
- Double number of connections with Extra Bar kits
- 3/4" holes accept low PIM snap-ins
- Highly configurable



900353-02 with 900355 Extra Bar Kit

Part #	Description
900352-01	Pole Mount Kit, 13-Position
900352-02	Pole Mount Kit, 13-Position, Extended Range
900353-01	Cable Support Bar, Pole Mount Kit, 22 Position
900353-02	Cable Support Bar, Pole Mount Kit, 22 Position, Extended Range
900354	Cable Support, Extra Bar Kit, 13 Position
900355	Cable Support, Extra Bar Kit, 22 Position

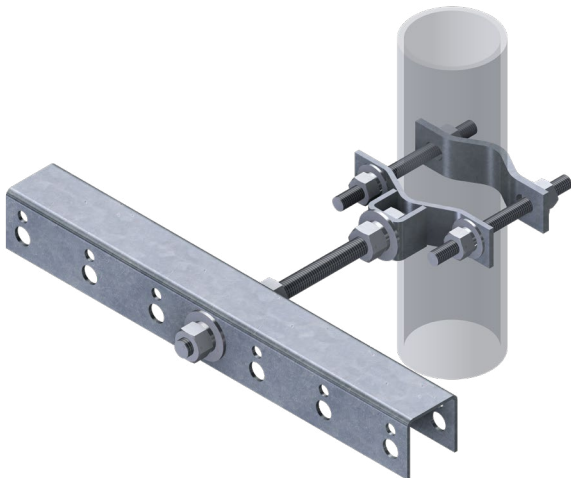
T-Mobile Approved Cable Support Bars

PIM Mitigating Multi-Run Cable Support Kit



Description:

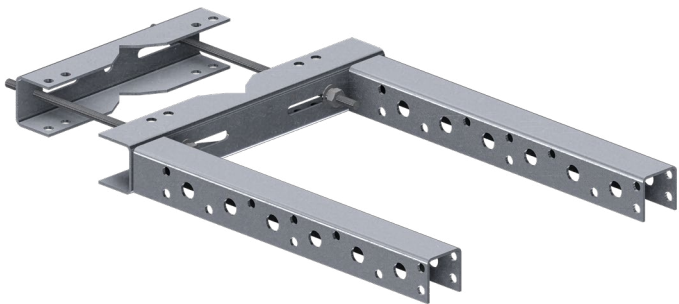
- Mounts to round legs
- Stands off less than 12"
- Hot-dip galvanized



Part #	# of Snap-In Holes	Round Member Size	Weight
RRU-UT12	12	1-1/2" – 3-1/2"	9.5 lb

T-Mobile Approved T-Bracket

Super Universal Double T-Bracket



Description:

- Mount to round or angle legs
- DBT1200 stands 18" off tower leg and supports up to 24 runs of cable using snap-in hangers
- DBT1800 stands 26" off tower leg and supports up to 36 runs of cable using snap-in hangers
- Hot-dip galvanized

Part #	# of Snap-In Holes	Round Member Size	60° Angle Leg	90° Angle Leg	Weight
DBT1200	24	1-1/2" - 6"	2-1/2" - 8"	2-1/2" - 5"	12.5 lb

T-Mobile Approved Adapters

3-Way Universal Standoff Adapters



Description:

- Weather-resistant nylon material
- Mount to round or flat members
- Include 3/4" and 3/8" accessory mounting holes
- Slots for 1/2" to 5/8" hose clamps, cable ties, or banding

Part #	Size	U of M
PIMTRAP	3-7/16" x 2-1/8" x 1-5/8"	10 pack

Universal Angle Adapters



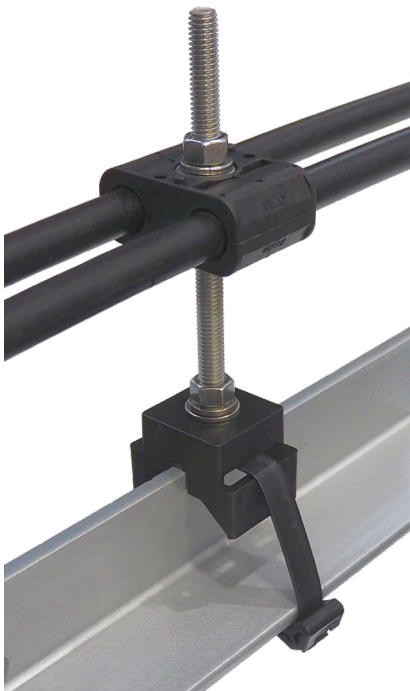
Description:

- Weather-resistant nylon material
- Includes two 3/4" accessory mounting holes
- Torque-stop set bolt ensures proper attachment force

Part #	Description	U of M
PAA-U	Nylon Angle Adapter	10 pack

T-Mobile Approved Cable Support Base

Multi-Function Cable Support Base



Description:

- Cost efficient
- UV stable, glass-filled nylon construction
- Mounts to angle or round members using low PIM acetal straps
- 3/8" accessory mounting hole
- 3/8" stainless steel nut included



Part #	Description	U of M
901043-10	Multi-Function Cable Support Base	10 pack

T-Mobile Approved Snap-in Adapters

Multi-Function Snap-in Adapter



901044-10

Description:

Multi-Function Snap-in Adapter 1 Position

- Cost efficient
- UV stable, glass-filled nylon construction
- Mounts to angle or round members using low PIM acetal straps
- 3/4" accessory mounting hole



901045-10

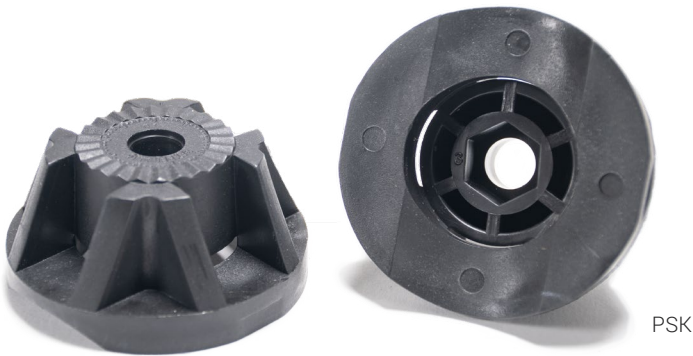
Multi-Function Snap-in Adapter 2 Position

- Cost efficient
- UV stable, glass-filled nylon construction
- Mounts to angle or round members using low PIM acetal straps
- Two 3/4" and one 3/8" accessory mounting holes
- 3/8" nut not included

Part #	Description	U of M
901044-10	PIM Shield Multi-Function Snap-in Adapter, 1 Position	10 pack
901045-10	PIM Shield Multi-Function Snap-in Adapter, 2 Position	10 pack

T-Mobile Approved Standoff Adapters

Standoff Adapters



PSK

Description:

- Attach with nylon cable ties, plastic round-member adapters, or acetal banding
- PSK is for use with cable blocks
 - Accept 3/8" standard nut to allow threaded rod attachment
 - Hold up to 3 cable blocks
 - Fit on round or flat members
- SA1C is for use with snap-in hangers



SA1C

Part #	Description	U of M
PSK	Plastic Standoff Adapter	10 pack
SA1C	Standoff Adapters	10 pack

T-Mobile Approved Hybrid Snap-In Hangers

Hybrid Snap-In Hangers



PSHS-1319



PSHS-4852

Description:

- Patented "Hybrid" snap-in design provides insulation at the mating interfaces to prevent metal-to-metal contact
- High strength
- Easy to install, remove and reposition
- No tools required
- 360° rotation at mounting interface

Part #	Description	U of M
PSHS-1319-10	Hybrid Snap-In, 13 to 19 mm, (1/2 in)	10 pack
PSHS-2630-10	Hybrid Snap-In, 26 to 30 mm, (7/8 in)	10 pack
PSHS-3642-10	Hybrid Snap-In, 36 to 42 mm, (1-1/4")	10 pack
PSHS-4852-10	Hybrid Snap-In, 48 to 52 mm, (1-5/8")	10 pack

T-Mobile Approved Cable Blocks & Hardware Kits

Cable Block Hardware Kits



Description:

- 3/8" Grade 304 stainless or A36 galvanized steel
- Each kit contains:
 - 10 threaded rods
 - 30 flat washers
 - 30 lock washers
 - 30 nuts
- See below chart for applications and pricing

Part #	Length	Material	Weight
CH80	8" Rods	Stainless Steel	2.9 lb
CH120	12" Rods	Stainless Steel	3.8 lb

Cable Blocks



Description:

- Manufactured from glass-filled polypropylene for long-term UV-resistance
- Interior ribs, combined with increased width, supply superior cable retention

Part #	Cable Size & Type	U of M	Weight
CXB4	Fiber Kit (4-6mm)	10 pack	1.3 lb
CXB38	3/8" Cables & LMR-400	10 pack	0.3 lb
CXB12	1/2" Corrugated	10 pack	0.6 lb
CXB78	7/8" Corrugated	10 pack	1.0 lb
CXB114	1-1/4" Corrugated	10 pack	3.0 lb
CXB158	1-5/8" Corrugated	10 pack	2.7 lb

T-Mobile Approved Tie Wraps and Cable Ties

Acetal Tie Wraps



Description:

- Acetal heavy-duty cable ties
- 1/2" width
- UV-resistant
- 400 lb loop tensile strength
- Use with acetal installation tool

Part #	Description	U of M
TW16	16" Acetal Tie Wrap	Bag of 50

Hook & Loop Cable Ties



Description:

- Industrial grade pre-cut straps
- Hook on one side, loop on the other
- Reusable
- Attaches to itself for fast and easy bundling
- Made in USA

Part #	Size	Package Quantity	Weight
HLCT12X8	1/2" x 8"	100	0.01 lb

T-Mobile Approved Cable Block Hardware Kits

PIM Free Isolator for Snap-In Hangers



SA-ISO shown with snap-in hanger



Description:

- Reduce PIM by avoiding metal-to-metal contact for snap-in hangers
- Isolator snaps between hangers and mounting surface and between stacked hangers

Part #	Description	U of M
SA-ISO	PIM Free Isolator for Snap-In Hangers	10 pack

T-Mobile Approved PIM Mitigation Paint and Caulk

PIM Mitigation Paint and Caulk



901087-5



901087-1-PKG

Description:

PIM Mitigation Paint

- PIM mitigation paint is a conductive acrylic polymer with enhanced elasticity designed to reduce external passive intermodulation (PIM) at cellular base stations. The paint is intended for large, flat surfaces and should NOT be applied directly to antenna mounting structures.
- High RF attenuation
- Crack resistant
- UV stable acrylic
- Water based
- Non-flammable
- Gallon can ships with special protective packaging
- Five gallon can must ship on a pallet

PIM Mitigation Caulk

- PIM mitigation caulk is a thickened version of PIM paint that can be used to fill gaps and seal RF from reaching PIM sources generated at contacting surfaces
- Forms a highly elastic seal that resists cracking

Part #	Description
901087-1-PKG	PIM Shield PIM Mitigation Paint, 1 Gallon
901087-5	PIM Shield PIM Mitigation Paint, 5 Gallon
901088	PIM Seal PIM Mitigation Caulk, 10.1 oz tube



901088

T-Mobile Approved PIM Blankets

PIM Blankets



Description:

- ConcealFab's PIM blankets are temporary RF barriers used to suppress PIM sources during the PIM hunting process
- PIM Barrier
- High RF attenuation
- Heavy duty vinyl construction
- Integrated tie-down loops

Part #	Description
007640-030030	PIM Blanket, 30" x 30"
007640-060030	PIM Blanket, 60" x 30"
007640-060060	PIM Blanket, 60" x 60"
007640-120060	PIM Blanket, 120" x 60"

PIM Tape



Description:

- PIM tape is a rapidly deployable RF barrier able to bond to a wide variety of surfaces including metals, single-ply roofing, multi-ply roofing, concrete, brick and wood.
- PIM Barrier
- High RF attenuation
- UV stable TPO outer protective layer
- High tack synthetic resin adhesive
- Silicone release liner

Part #	Description
008587-06-25-B	PIM Tape, 6" x 25' roll, black
008587-06-25-W	PIM Tape, 6" x 25' roll, white
008587-12-25-B	PIM Tape, 12" x 25' roll, black
008587-12-25-W	PIM Tape, 12" x 25' roll, white



A **valmont**  COMPANY

valmont 
TELECOM

© 2024 Valmont Telecommunications, Inc. All Rights Reserved.
Valmont and Site Pro 1 are registered trademarks of Valmont Industries,
Inc. V2.3 Latest Update 12/23