



# Sector Frame Mount Assembly Guide

## Table of Contents

<b>Monopole Sites</b> .....	<b>3</b>	10' HD Series™ V-Frames (4 Sector Kit) .....	21
<b>Sector Frames</b> .....	<b>4</b>	12' HD Series™ V-Frames (4 Sector Kit) .....	22
8' XD Series™ V-Frames (4 Sector Kit) .....	4	8' XD Series™ V-Frames (3 Sector Kit) .....	23
10' XD Series™ V-Frames (4 Sector Kit) .....	5	10' XD Series™ V-Frames (3 Sector Kit) .....	24
12' XD Series™ V-Frames (4 Sector Kit) .....	6	12' XD Series™ V-Frames (3 Sector Kit) .....	25
8' HD Series™ V-Frames (4 Sector Kit) .....	7	8' HD Series™ V-Frames (3 Sector Kit) .....	26
10' HD Series™ V-Frames (4 Sector Kit) .....	8	10' HD Series™ V-Frames (3 Sector Kit) .....	27
12' HD Series™ V-Frames (4 Sector Kit) .....	9	12' HD Series™ V-Frames (3 Sector Kit) .....	28
8' XD Series™ V-Frames (3 Sector Kit) .....	10	8' XD Series™ V-Frames (1 Sector Kit, w/ Horizontal Pipe) .....	29
10' XD Series™ V-Frames (3 Sector Kit) .....	11	8' XD Series™ V-Frames (1 Sector Kit, wo/ Horizontal Pipe) .....	30
12' XD Series™ V-Frames (3 Sector Kit) .....	12	10' XD Series™ V-Frames (1 Sector Kit, w/ Horizontal Pipe) .....	31
8' HD Series™ V-Frames (3 Sector Kit) .....	13	10' XD Series™ V-Frames (1 Sector Kit, wo/ Horizontal Pipe) .....	32
10' HD Series™ V-Frames (3 Sector Kit) .....	14	12' XD Series™ V-Frames (1 Sector Kit, w/ Horizontal Pipe) .....	33
12' HD Series™ V-Frames (3 Sector Kit) .....	15	12' XD Series™ V-Frames (1 Sector Kit, wo/ Horizontal Pipe) .....	34
<b>Tower Sites</b> .....	<b>16</b>	8' HD Series™ V-Frames (1 Sector Kit, w/ Horizontal Pipe) .....	35
<b>Sector Frames</b> .....	<b>17</b>	8' HD Series™ V-Frames (1 Sector Kit, wo/ Horizontal Pipe) .....	36
8' XD Series™ V-Frames (4 Sector Kit) .....	17	10' HD Series™ V-Frames (1 Sector Kit, w/ Horizontal Pipe) .....	37
10' XD Series™ V-Frames (4 Sector Kit) .....	18	10' HD Series™ V-Frames (1 Sector Kit, wo/ Horizontal Pipe) .....	38
12' XD Series™ V-Frames (4 Sector Kit) .....	19	12' HD Series™ V-Frames (1 Sector Kit, w/ Horizontal Pipe) .....	39
8' HD Series™ V-Frames (4 Sector Kit) .....	20	12' HD Series™ V-Frames (1 Sector Kit, wo/ Horizontal Pipe) .....	40

# Monopole Sites

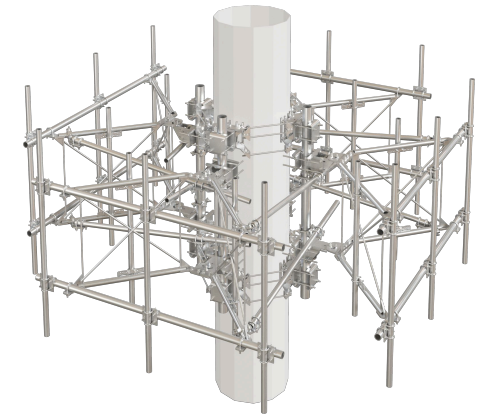
---

## 8' XD Series™ V-Frames (4 Sector Kit)

This purpose-built, 4-sector kit contains the 8' XD Series™ V-Frames with included antenna and RRU pipes.

- Features BCAM™ Taper Adjustment System
- Feature our Quick-Plate™ for easy grounding and addition of RRU mounting pipes or unistrut
- Include stiff arms and hardware to mount 2-3/8" and 2-7/8" antenna mounting pipes
- Frames rotate for easy azimuth adjustment
- Contact us for load and engineering data

SKU	Face Width	Ant. Pipe Qty.	Ant. Pipe OD	Ant. Pipe Length	TB Qty.	RRU Pipe Qty.	RRU Pipe OD	RRU Pipe Length	Monopole
4VFA8XDM3010R4	9'-0"	12	2.875"	120"	8	16	2.375"	72"	22" to 60" O.D
4VFA8XDM308R4	9'-0"	12	2.875"	96"	8	16	2.375"	72"	22" to 60" O.D
4VFA8XDM3010R2	9'-0"	12	2.875"	120"	8	8	2.375"	72"	22" to 60" O.D
4VFA8XDM308R2	9'-0"	12	2.875"	96"	8	8	2.375"	72"	22" to 60" O.D
4VFA8XDM210R4	9'-0"	12	2.375"	120"	8	16	2.375"	72"	22" to 60" O.D
4VFA8XDM28R4	9'-0"	12	2.375"	96"	8	16	2.375"	72"	22" to 60" O.D
4VFA8XDM210R2	9'-0"	12	2.375"	120"	8	8	2.375"	72"	22" to 60" O.D
4VFA8XDM28R2	9'-0"	12	2.375"	96"	8	8	2.375"	72"	22" to 60" O.D



### Works With

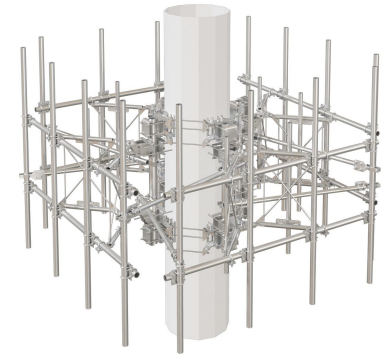
SKU	Name	Description	Weight
VPM-K	V-Frame Pipe Mount Kit	This kit provides an additional attachment point on sector frames for RRUs while providing increased RF performance.	21
VCX1-2K	V-Clamp Crossover	This crossover connection provides a small 3" standoff at 90°.	6



## 10' XD Series™ V-Frames (4 Sector Kit)

This purpose-built, 4-sector kit contains the 10' XD Series™ V-Frames with included antenna and RRU pipes.

- Features BCAM™ Taper Adjustment System
- Feature our Quick-Plate™ for easy grounding and addition of RRU mounting pipes or unistrut
- Include stiff arms and hardware to mount 2-3/8" and 2-7/8" antenna mounting pipes
- Frames rotate for easy azimuth adjustment
- Contact us for load and engineering data



SKU	Face Width	Ant. Pipe Qty.	Ant. Pipe OD	Ant. Pipe Length	TB Qty.	RRU Pipe Qty.	RRU Pipe OD	RRU Pipe Length	Monopole
4VFA10XDM3010R4	11'-0"	16	2.875"	120"	8	16	2.375"	72"	22" to 60" O.D
4VFA10XDM308R4	11'-0"	16	2.875"	96"	8	16	2.375"	72"	22" to 60" O.D
4VFA10XDM3010R2	11'-0"	16	2.875"	120"	8	8	2.375"	72"	22" to 60" O.D
4VFA10XDM308R2	11'-0"	16	2.875"	96"	8	8	2.375"	72"	22" to 60" O.D
4VFA10XDM210R4	11'-0"	16	2.375"	120"	8	16	2.375"	72"	22" to 60" O.D
4VFA10XDM28R4	11'-0"	16	2.375"	96"	8	16	2.375"	72"	22" to 60" O.D
4VFA10XDM210R2	11'-0"	16	2.375"	120"	8	8	2.375"	72"	22" to 60" O.D
4VFA10XDM28R2	11'-0"	16	2.375"	96"	8	8	2.375"	72"	22" to 60" O.D

### Works With

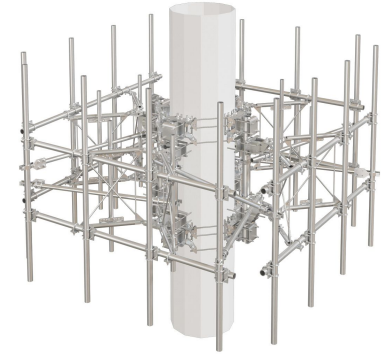
SKU	Name	Description	Weight
VPM-K	V-Frame Pipe Mount Kit	This kit provides an additional attachment point on sector frames for RRUs while providing increased RF performance.	21
VCX1-2K	V-Clamp Crossover	This crossover connection provides a small 3" standoff at 90°.	6



## 12' XD Series™ V-Frames (4 Sector Kit)

This purpose-built, 4-sector kit contains the 12' XD Series™ V-Frames with included antenna and RRU pipes.

- Features BCAM™ Taper Adjustment System
- Feature our Quick-Plate™ for easy grounding and addition of RRU mounting pipes or unistrut
- Include stiff arms and hardware to mount 2-3/8" and 2-7/8" antenna mounting pipes
- Frames rotate for easy azimuth adjustment
- Contact us for load and engineering data



SKU	Face Width	Ant. Pipe Qty.	Ant. Pipe OD	Ant. Pipe Length	TB Qty.	RRU Pipe Qty.	RRU Pipe OD	RRU Pipe Length	Monopole
4VFA12XDM3010R4	13'-0"	16	2.875"	120"	8	16	2.375"	72"	22" to 60" O.D
4VFA12XDM308R4	13'-0"	16	2.875"	96"	8	16	2.375"	72"	22" to 60" O.D
4VFA12XDM3010R2	13'-0"	16	2.875"	120"	8	8	2.375"	72"	22" to 60" O.D
4VFA12XDM308R2	13'-0"	16	2.875"	96"	8	8	2.375"	72"	22" to 60" O.D
4VFA12XDM210R4	13'-0"	16	2.375"	120"	8	16	2.375"	72"	22" to 60" O.D
4VFA12XDM28R4	13'-0"	16	2.375"	96"	8	16	2.375"	72"	22" to 60" O.D
4VFA12XDM210R2	13'-0"	16	2.375"	120"	8	8	2.375"	72"	22" to 60" O.D
4VFA12XDM28R2	13'-0"	16	2.375"	96"	8	8	2.375"	72"	22" to 60" O.D

### Works With

SKU	Name	Description	Weight
VPM-K	V-Frame Pipe Mount Kit	This kit provides an additional attachment point on sector frames for RRUs while providing increased RF performance.	21
VCX1-2K	V-Clamp Crossover	This crossover connection provides a small 3" standoff at 90°.	6

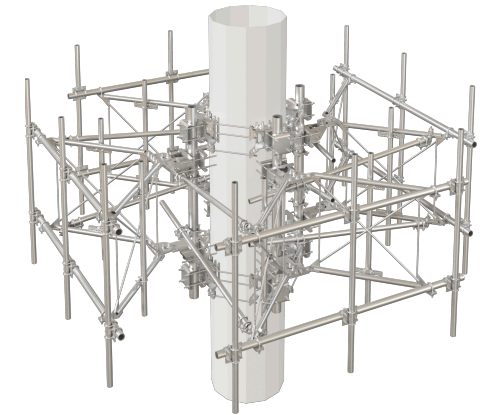


## 8' HD Series™ V-Frames (4 Sector Kit)

This purpose-built, 4-sector kit contains the 8' HD Series™ V-Frames with included antenna and RRU pipes.

- Features BCAM™ Taper Adjustment System
- Feature our Quick-Plate™ for easy grounding and addition of RRU mounting pipes or unistrut
- Include stiff arms and hardware to mount 2-3/8" and 2-7/8" antenna mounting pipes
- Frames rotate for easy azimuth adjustment
- Contact us for load and engineering data

SKU	Face Width	Ant. Pipe Qty.	Ant. Pipe OD	Ant. Pipe Length	TB Qty.	RRU Pipe Qty.	RRU Pipe OD	RRU Pipe Length	Monopole
4VFA8HDM3010R4	9'-0"	12	2.875"	120"	8	16	2.375"	72"	22" to 60" O.D
4VFA8HDM308R4	9'-0"	12	2.875"	96"	8	16	2.375"	72"	22" to 60" O.D
4VFA8HDM3010R2	9'-0"	12	2.875"	120"	8	8	2.375"	72"	22" to 60" O.D
4VFA8HDM308R2	9'-0"	12	2.875"	96"	8	8	2.375"	72"	22" to 60" O.D
4VFA8HDM210R4	9'-0"	12	2.375"	120"	8	16	2.375"	72"	22" to 60" O.D
4VFA8HDM28R4	9'-0"	12	2.375"	96"	8	16	2.375"	72"	22" to 60" O.D
4VFA8HDM210R2	9'-0"	12	2.375"	120"	8	8	2.375"	72"	22" to 60" O.D
4VFA8HDM28R2	9'-0"	12	2.375"	96"	8	8	2.375"	72"	22" to 60" O.D



### Works With

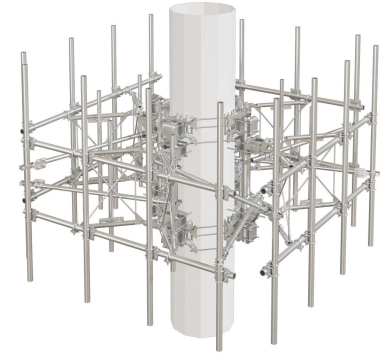
SKU	Name	Description	Weight
VPM-K	V-Frame Pipe Mount Kit	This kit provides an additional attachment point on sector frames for RRUs while providing increased RF performance.	21
VCX1-2K	V-Clamp Crossover	This crossover connection provides a small 3" standoff at 90°.	6



## 10' HD Series™ V-Frames (4 Sector Kit)

This purpose-built, 4-sector kit contains the 10' HD Series™ V-Frames with included antenna and RRU pipes.

- Features BCAM™ Taper Adjustment System
- Feature our Quick-Plate™ for easy grounding and addition of RRU mounting pipes or unistrut
- Include stiff arms and hardware to mount 2-3/8" and 2-7/8" antenna mounting pipes
- Frames rotate for easy azimuth adjustment
- Contact us for load and engineering data



SKU	Face Width	Ant. Pipe Qty.	Ant. Pipe OD	Ant. Pipe Length	TB Qty.	RRU Pipe Qty.	RRU Pipe OD	RRU Pipe Length	Monopole
4VFA10HDM3010R4	11'-0"	16	2.875"	120"	8	16	2.375"	72"	22" to 60" O.D
4VFA10HDM308R4	11'-0"	16	2.875"	96"	8	16	2.375"	72"	22" to 60" O.D
4VFA10HDM3010R2	11'-0"	16	2.875"	120"	8	8	2.375"	72"	22" to 60" O.D
4VFA10HDM308R2	11'-0"	16	2.875"	96"	8	8	2.375"	72"	22" to 60" O.D
4VFA10HDM210R4	11'-0"	16	2.375"	120"	8	16	2.375"	72"	22" to 60" O.D
4VFA10HDM28R4	11'-0"	16	2.375"	96"	8	16	2.375"	72"	22" to 60" O.D
4VFA10HDM210R2	11'-0"	16	2.375"	120"	8	8	2.375"	72"	22" to 60" O.D
4VFA10HDM28R2	11'-0"	16	2.375"	96"	8	8	2.375"	72"	22" to 60" O.D

### Works With

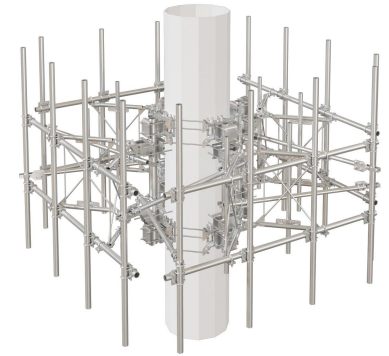
SKU	Name	Description	Weight
VPM-K	V-Frame Pipe Mount Kit	This kit provides an additional attachment point on sector frames for RRU's while providing increased RF performance.	21
VCX1-2K	V-Clamp Crossover	This crossover connection provides a small 3" standoff at 90°.	6



## 12' HD Series™ V-Frames (4 Sector Kit)

This purpose-built, 4-sector kit contains the 12' HD Series™ V-Frames with included antenna and RRU pipes.

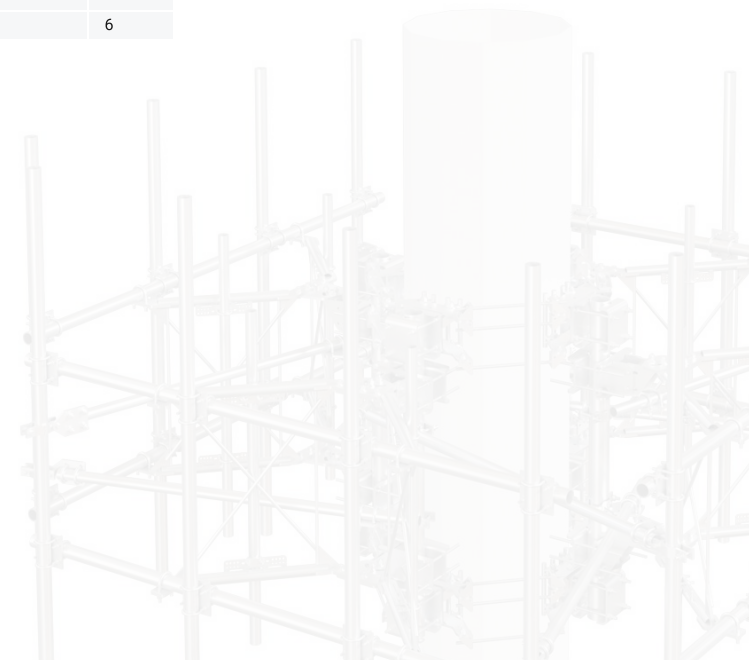
- Features BCAM™ Taper Adjustment System
- Feature our Quick-Plate™ for easy grounding and addition of RRU mounting pipes or unistrut
- Include stiff arms and hardware to mount 2-3/8" and 2-7/8" antenna mounting pipes
- Frames rotate for easy azimuth adjustment
- Contact us for load and engineering data



SKU	Face Width	Ant. Pipe Qty.	Ant. Pipe OD	Ant. Pipe Length	TB Qty.	RRU Pipe Qty.	RRU Pipe OD	RRU Pipe Length	Monopole
4VFA12HDM3010R4	13'-0"	16	2.875"	120"	8	16	2.375"	72"	22" to 60" O.D
4VFA12HDM308R4	13'-0"	16	2.875"	96"	8	16	2.375"	72"	22" to 60" O.D
4VFA12HDM3010R2	13'-0"	16	2.875"	120"	8	8	2.375"	72"	22" to 60" O.D
4VFA12HDM308R2	13'-0"	16	2.875"	96"	8	8	2.375"	72"	22" to 60" O.D
4VFA12HDM210R4	13'-0"	16	2.375"	120"	8	16	2.375"	72"	22" to 60" O.D
4VFA12HDM28R4	13'-0"	16	2.375"	96"	8	16	2.375"	72"	22" to 60" O.D
4VFA12HDM210R2	13'-0"	16	2.375"	120"	8	8	2.375"	72"	22" to 60" O.D
4VFA12HDM28R2	13'-0"	16	2.375"	96"	8	8	2.375"	72"	22" to 60" O.D

### Works With

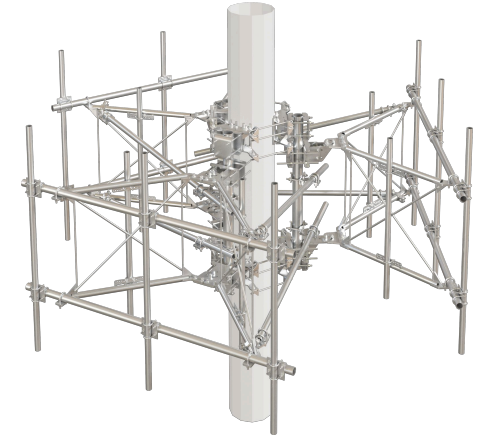
SKU	Name	Description	Weight
VPM-K	V-Frame Pipe Mount Kit	This kit provides an additional attachment point on sector frames for RRUs while providing increased RF performance.	21
VCX1-2K	V-Clamp Crossover	This crossover connection provides a small 3" standoff at 90°.	6



## 8' XD Series™ V-Frames (3 Sector Kit)

This purpose-built, 3-sector kit contains the 8' XD Series™ V-Frames with included antenna and RRU pipes.

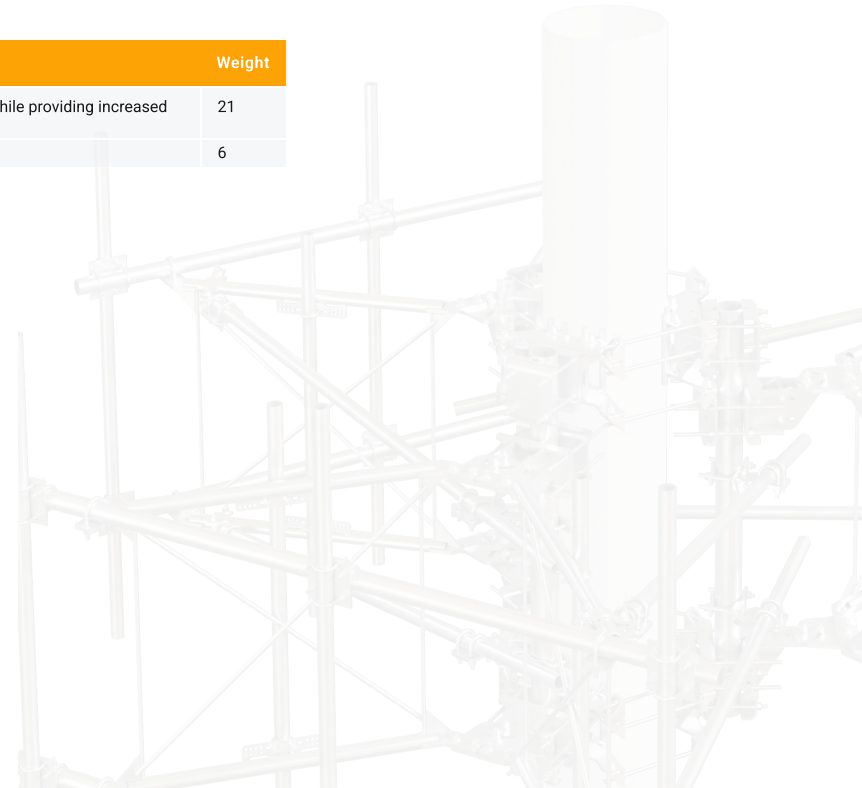
- Features BCAM™ Taper Adjustment System
- Feature our Quick-Plate™ for easy grounding and addition of RRU mounting pipes or unistrut
- Include stiff arms and hardware to mount 2-3/8" and 2-7/8" antenna mounting pipes
- Frames rotate for easy azimuth adjustment
- Contact us for load and engineering data



SKU	Face Width	Ant. Pipe Qty.	Ant. Pipe OD	Ant. Pipe Length	TB Qty.	RRU Pipe Qty.	RRU Pipe OD	RRU Pipe Length	Monopole
3VFA8XDM3010R4	9'-0"	9	2.875"	120"	6	12	2.375"	72"	14" to 36" O.D
3VFA8XDM308R4	9'-0"	9	2.875"	96"	6	12	2.375"	72"	14" to 36" O.D
3VFA8XDM3010R2	9'-0"	9	2.875"	120"	6	6	2.375"	72"	14" to 36" O.D
3VFA8XDM308R2	9'-0"	9	2.875"	96"	6	6	2.375"	72"	14" to 36" O.D
3VFA8XDM210R4	9'-0"	9	2.375"	120"	6	12	2.375"	72"	14" to 36" O.D
3VFA8XDM28R4	9'-0"	9	2.375"	96"	6	12	2.375"	72"	14" to 36" O.D
3VFA8XDM210R2	9'-0"	9	2.375"	120"	6	6	2.375"	72"	14" to 36" O.D
3VFA8XDM28R2	9'-0"	9	2.375"	96"	6	6	2.375"	72"	14" to 36" O.D

### Works With

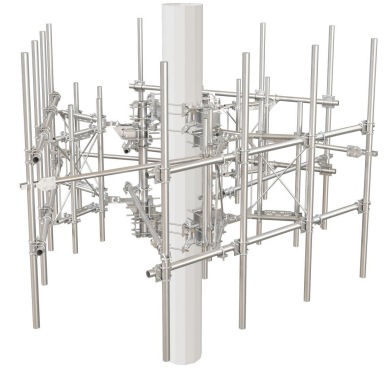
SKU	Name	Description	Weight
VPM-K	V-Frame Pipe Mount Kit	This kit provides an additional attachment point on sector frames for RRUs while providing increased RF performance.	21
VCX1-2K	V-Clamp Crossover	This crossover connection provides a small 3" standoff at 90°.	6



## 10' XD Series™ V-Frames (3 Sector Kit)

This purpose-built, 3-sector kit contains the 10' XD Series™ V-Frames with included antenna and RRU pipes.

- Features BCAM™ Taper Adjustment System
- Feature our Quick-Plate™ for easy grounding and addition of RRU mounting pipes or unistrut
- Include stiff arms and hardware to mount 2-3/8" and 2-7/8" antenna mounting pipes
- Frames rotate for easy azimuth adjustment
- Contact us for load and engineering data



SKU	Face Width	Ant. Pipe Qty.	Ant. Pipe OD	Ant. Pipe Length	TB Qty.	RRU Pipe Qty.	RRU Pipe OD	RRU Pipe Length	Monopole
3VFA10XDM3010R4	11'-0"	12	2.875"	120"	6	12	2.375"	72"	14" to 36" O.D
3VFA10XDM308R4	11'-0"	12	2.875"	96"	6	12	2.375"	72"	14" to 36" O.D
3VFA10XDM3010R2	11'-0"	12	2.875"	120"	6	6	2.375"	72"	14" to 36" O.D
3VFA10XDM308R2	11'-0"	12	2.875"	96"	6	6	2.375"	72"	14" to 36" O.D
3VFA10XDM210R4	11'-0"	12	2.375"	120"	6	12	2.375"	72"	14" to 36" O.D
3VFA10XDM28R4	11'-0"	12	2.375"	96"	6	12	2.375"	72"	14" to 36" O.D
3VFA10XDM210R2	11'-0"	12	2.375"	120"	6	6	2.375"	72"	14" to 36" O.D
3VFA10XDM28R2	11'-0"	12	2.375"	96"	6	6	2.375"	72"	14" to 36" O.D

### Works With

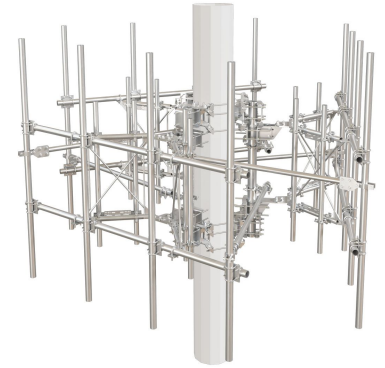
SKU	Name	Description	Weight
VPM-K	V-Frame Pipe Mount Kit	This kit provides an additional attachment point on sector frames for RRUs while providing increased RF performance.	21
VCX1-2K	V-Clamp Crossover	This crossover connection provides a small 3" standoff at 90°.	6



## 12' XD Series™ V-Frames (3 Sector Kit)

This purpose-built, 3-sector kit contains the 12' XD Series™ V-Frames with included antenna and RRU pipes.

- Features BCAM™ Taper Adjustment System
- Feature our Quick-Plate™ for easy grounding and addition of RRU mounting pipes or unistrut
- Include stiff arms and hardware to mount 2-3/8" and 2-7/8" antenna mounting pipes
- Frames rotate for easy azimuth adjustment
- Contact us for load and engineering data



SKU	Face Width	Ant. Pipe Qty.	Ant. Pipe OD	Ant. Pipe Length	TB Qty.	RRU Pipe Qty.	RRU Pipe OD	RRU Pipe Length	Monopole
3VFA12XDM3010R4	13'-0"	12	2.875"	120"	6	12	2.375"	72"	14" to 36" O.D
3VFA12XDM308R4	13'-0"	12	2.875"	96"	6	12	2.375"	72"	14" to 36" O.D
3VFA12XDM3010R2	13'-0"	12	2.875"	120"	6	6	2.375"	72"	14" to 36" O.D
3VFA12XDM308R2	13'-0"	12	2.875"	96"	6	6	2.375"	72"	14" to 36" O.D
3VFA12XDM210R4	13'-0"	12	2.375"	120"	6	12	2.375"	72"	14" to 36" O.D
3VFA12XDM28R4	13'-0"	12	2.375"	96"	6	12	2.375"	72"	14" to 36" O.D
3VFA12XDM210R2	13'-0"	12	2.375"	120"	6	6	2.375"	72"	14" to 36" O.D
3VFA12XDM28R2	13'-0"	12	2.375"	96"	6	6	2.375"	72"	14" to 36" O.D

### Works With

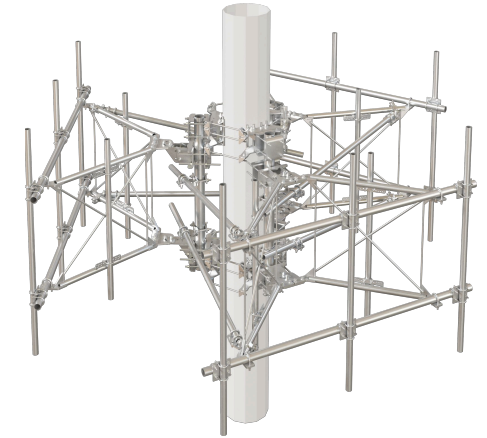
SKU	Name	Description	Weight
VPM-K	V-Frame Pipe Mount Kit	This kit provides an additional attachment point on sector frames for RRU's while providing increased RF performance.	21
VCX1-2K	V-Clamp Crossover	This crossover connection provides a small 3" standoff at 90°.	6



## 8' HD Series™ V-Frames (3 Sector Kit)

This purpose-built, 3-sector kit contains the 8' HD Series™ V-Frames with included antenna and RRU pipes.

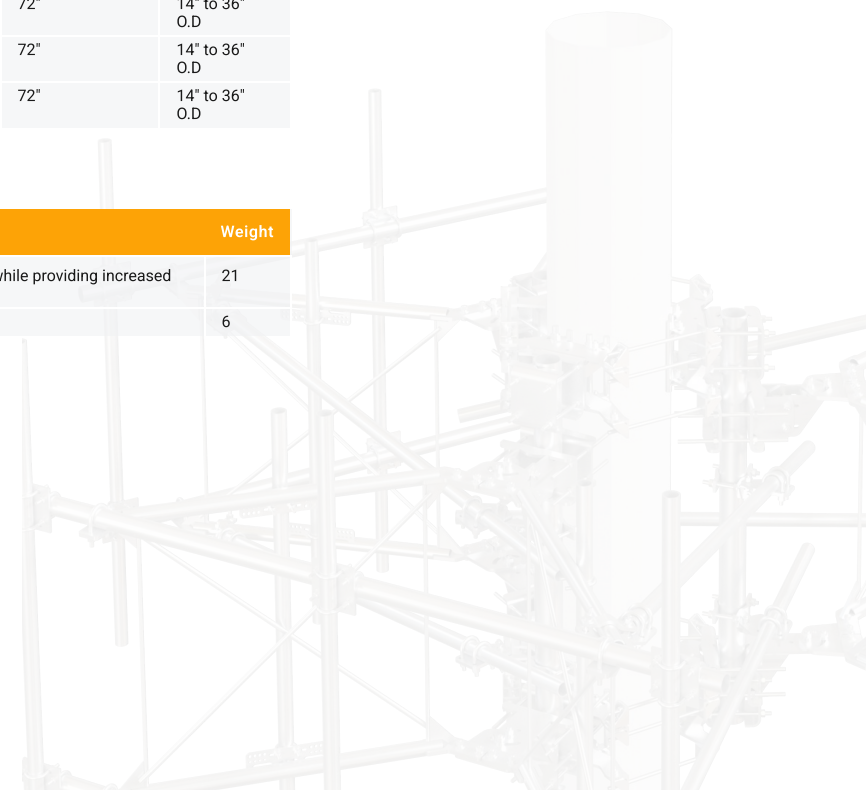
- Features BCAM™ Taper Adjustment System
- Feature our Quick-Plate™ for easy grounding and addition of RRU mounting pipes or unistrut
- Include stiff arms and hardware to mount 2-3/8" and 2-7/8" antenna mounting pipes
- Frames rotate for easy azimuth adjustment
- Contact us for load and engineering data



SKU	Face Width (ft)	Ant. Pipe Qty.	Ant. Pipe OD	Ant. Pipe Length	TB Qty.	RRU Pipe Qty.	RRU Pipe OD	RRU Pipe Length	Monopole
3VFA8HDM3010R4	9'-0"	9	2.875"	120"	6	12	2.375"	72"	14" to 36" O.D
3VFA8HDM308R4	9'-0"	9	2.875"	96"	6	12	2.375"	72"	14" to 36" O.D
3VFA8HDM3010R2	9'-0"	9	2.875"	120"	6	6	2.375"	72"	14" to 36" O.D
3VFA8HDM308R2	9'-0"	9	2.875"	96"	6	6	2.375"	72"	14" to 36" O.D
3VFA8HDM210R4	9'-0"	9	2.375"	120"	6	12	2.375"	72"	14" to 36" O.D
3VFA8HDM28R4	9'-0"	9	2.375"	96"	6	12	2.375"	72"	14" to 36" O.D
3VFA8HDM210R2	9'-0"	9	2.375"	120"	6	6	2.375"	72"	14" to 36" O.D
3VFA8HDM28R2	9'-0"	9	2.375"	96"	6	6	2.375"	72"	14" to 36" O.D

### Works With

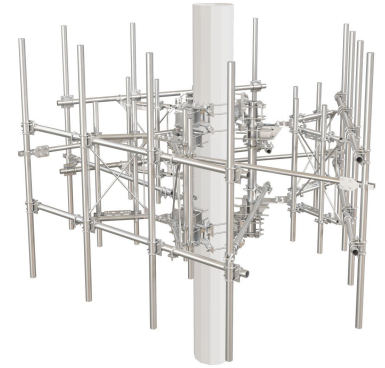
SKU	Name	Description	Weight
VPM-K	V-Frame Pipe Mount Kit	This kit provides an additional attachment point on sector frames for RRUs while providing increased RF performance.	21
VCX1-2K	V-Clamp Crossover	This crossover connection provides a small 3" standoff at 90°.	6



## 10' HD Series™ V-Frames (3 Sector Kit)

This purpose-built, 3-sector kit contains the 10' HD Series™ V-Frames with included antenna and RRU pipes.

- Features BCAM™ Taper Adjustment System
- Feature our Quick-Plate™ for easy grounding and addition of RRU mounting pipes or unistrut
- Include stiff arms and hardware to mount 2-3/8" and 2-7/8" antenna mounting pipes
- Frames rotate for easy azimuth adjustment
- Contact us for load and engineering data



SKU	Face Width	Ant. Pipe Qty.	Ant. Pipe OD	Ant. Pipe Length	TB Qty.	RRU Pipe Qty.	RRU Pipe OD	RRU Pipe Length	Monopole
3VFA10HDM3010R4	11'-0"	12	2.875"	120"	6	12	2.375"	72"	14" to 36" O.D
3VFA10HDM308R4	11'-0"	12	2.875"	96"	6	12	2.375"	72"	14" to 36" O.D
3VFA10HDM3010R2	11'-0"	12	2.875"	120"	6	6	2.375"	72"	14" to 36" O.D
3VFA10HDM308R2	11'-0"	12	2.875"	96"	6	6	2.375"	72"	14" to 36" O.D
3VFA10HDM210R4	11'-0"	12	2.375"	120"	6	12	2.375"	72"	14" to 36" O.D
3VFA10HDM28R4	11'-0"	12	2.375"	96"	6	12	2.375"	72"	14" to 36" O.D
3VFA10HDM210R2	11'-0"	12	2.375"	120"	6	6	2.375"	72"	14" to 36" O.D
3VFA10HDM28R2	11'-0"	12	2.375"	96"	6	6	2.375"	72"	14" to 36" O.D

### Works With

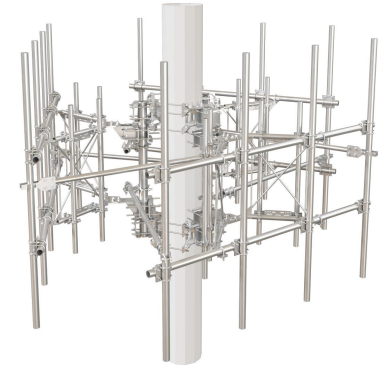
SKU	Name	Description	Weight
VPM-K	V-Frame Pipe Mount Kit	This kit provides an additional attachment point on sector frames for RRUs while providing increased RF performance.	21
VCX1-2K	V-Clamp Crossover	This crossover connection provides a small 3" standoff at 90°.	6



## 12' HD Series™ V-Frames (3 Sector Kit)

This purpose-built, 3-sector kit contains the 12' HD Series™ V-Frames with included antenna and RRU pipes.

- Features BCAM™ Taper Adjustment System
- Feature our Quick-Plate™ for easy grounding and addition of RRU mounting pipes or unistrut
- Include stiff arms and hardware to mount 2-3/8" and 2-7/8" antenna mounting pipes
- Frames rotate for easy azimuth adjustment
- Contact us for load and engineering data



SKU	Face Width	Ant. Pipe Qty.	Ant. Pipe OD	Ant. Pipe Length	TB Qty.	RRU Pipe Qty.	RRU Pipe OD	RRU Pipe Length	Monopole
3VFA12HDM3010R4	13'-0"	12	2.875"	120"	6	12	2.375"	72"	14" to 36" O.D
3VFA12HDM308R4	13'-0"	12	2.875"	96"	6	12	2.375"	72"	14" to 36" O.D
3VFA12HDM3010R2	13'-0"	12	2.875"	120"	6	6	2.375"	72"	14" to 36" O.D
3VFA12HDM308R2	13'-0"	12	2.875"	96"	6	6	2.375"	72"	14" to 36" O.D
3VFA12HDM210R4	13'-0"	12	2.375"	120"	6	12	2.375"	72"	14" to 36" O.D
3VFA12HDM28R4	13'-0"	12	2.375"	96"	6	12	2.375"	72"	14" to 36" O.D
3VFA12HDM210R2	13'-0"	12	2.375"	120"	6	6	2.375"	72"	14" to 36" O.D
3VFA12HDM28R2	13'-0"	12	2.375"	96"	6	6	2.375"	72"	14" to 36" O.D

### Works With

SKU	Name	Description	Weight
VPM-K	V-Frame Pipe Mount Kit	This kit provides an additional attachment point on sector frames for RRUs while providing increased RF performance.	21
VCX1-2K	V-Clamp Crossover	This crossover connection provides a small 3" standoff at 90°.	6



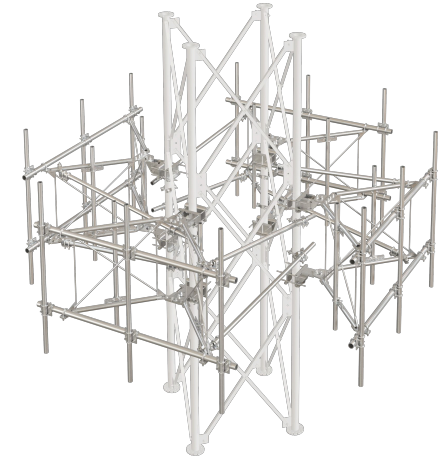
# Tower Sites

---

## 8' XD Series™ V-Frames (4 Sector Kit)

This purpose-built, 4-sector kit contains the 8' XD Series™ V-Frames with included antenna and RRU pipes.

- Features BCAM™ Taper Adjustment System
- Feature our Quick-Plate™ for easy grounding and addition of RRU mounting pipes or unistrut
- Include stiff arms and hardware to mount 2-3/8" and 2-7/8" antenna mounting pipes
- Frames rotate for easy azimuth adjustment
- Contact us for load and engineering data



SKU	Face Width	Ant. Pipe Qty.	Ant. Pipe OD	Ant. Pipe Length	TB Qty.	RRU Pipe Qty.	RRU Pipe OD	RRU Pipe Length
4VFA8XDT3010R4	9'-0"	12	2.875"	120"	8	16	2.375"	72"
4VFA8XDT308R4	9'-0"	12	2.875"	96"	8	16	2.375"	72"
4VFA8XDT3010R2	9'-0"	12	2.875"	120"	8	8	2.375"	72"
4VFA8XDT308R2	9'-0"	12	2.875"	96"	8	8	2.375"	72"
4VFA8XDT210R4	9'-0"	12	2.375"	120"	8	16	2.375"	72"
4VFA8XDT28R4	9'-0"	12	2.375"	96"	8	16	2.375"	72"
4VFA8XDT210R2	9'-0"	12	2.375"	120"	8	8	2.375"	72"
4VFA8XDT28R2	9'-0"	12	2.375"	96"	8	8	2.375"	72"

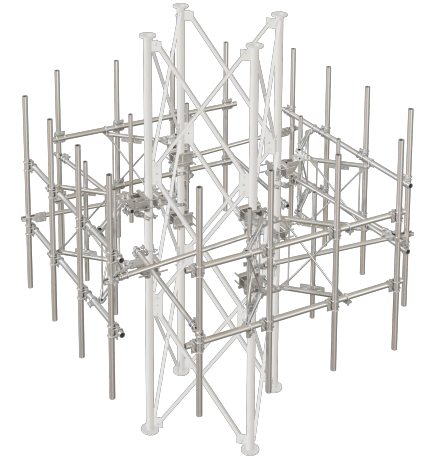
### Works With

SKU	Name	Description	Weight
BCAM-HDLL	BCAM™ Large Round Leg Adapter	This kit enables the attachment of the BCAM™ taper adjustment system to larger round legs.	134
BCAM-HDLL-AA	BCAM™ Large Angle Leg Adapter	This kit enables the attachment of the BCAM™ taper adjustment system to larger angle legs.	131
RRU-FU2	Full Universal RRU Mount	This universal RRU mount enables the mounting of up to two remote radio units (RRU's).	51
RRUDSM	Dual RRU Swivel Mount (Kit of 2)	These RRU dual swivel mounts enable the mounting of multiple RRU's.	41
VPM-K	V-Frame Pipe Mount Kit	This kit provides an additional attachment point on sector frames for RRUs while providing increased RF performance.	21
VCX1-2K	V-Clamp Crossover	This crossover connection provides a small 3" standoff at 90°.	6

## 10' XD Series™ V-Frames (4 Sector Kit)

This purpose-built, 4-sector kit contains the 10' XD Series™ V-Frames with included antenna and RRU pipes.

- Features BCAM™ Taper Adjustment System
- Feature our Quick-Plate™ for easy grounding and addition of RRU mounting pipes or unistrut
- Include stiff arms and hardware to mount 2-3/8" and 2-7/8" antenna mounting pipes
- Frames rotate for easy azimuth adjustment
- Contact us for load and engineering data



SKU	Face Width	Ant. Pipe Qty.	Ant. Pipe OD	Ant. Pipe Length	TB Qty.	RRU Pipe Qty.	RRU Pipe OD	RRU Pipe Length
4VFA10XDT3010R4	11'-0"	16	2.875"	120"	8	16	2.375"	72"
4VFA10XDT308R4	11'-0"	16	2.875"	96"	8	16	2.375"	72"
4VFA10XDT3010R2	11'-0"	16	2.875"	120"	8	8	2.375"	72"
4VFA10XDT308R2	11'-0"	16	2.875"	96"	8	8	2.375"	72"
4VFA10XDT210R4	11'-0"	16	2.375"	120"	8	16	2.375"	72"
4VFA10XDT28R4	11'-0"	16	2.375"	96"	8	16	2.375"	72"
4VFA10XDT210R2	11'-0"	16	2.375"	120"	8	8	2.375"	72"
4VFA10XDT28R2	11'-0"	16	2.375"	96"	8	8	2.375"	72"

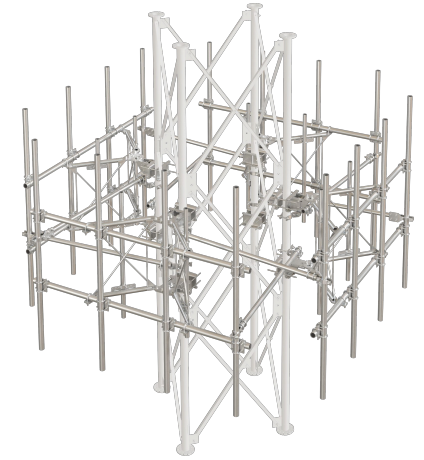
### Works With

SKU	Name	Description	Weight
BCAM-HDLL	BCAM™ Large Round Leg Adapter	This kit enables the attachment of the BCAM™ taper adjustment system to larger round legs.	134
BCAM-HDLL-AA	BCAM™ Large Angle Leg Adapter	This kit enables the attachment of the BCAM™ taper adjustment system to larger angle legs.	131
RRU-FU2	Full Universal RRU Mount	This universal RRU mount enables the mounting of up to two remote radio units (RRU's).	51
RRUDSM	Dual RRU Swivel Mount (Kit of 2)	These RRU dual swivel mounts enable the mounting of multiple RRU's.	41
VPM-K	V-Frame Pipe Mount Kit	This kit provides an additional attachment point on sector frames for RRUs while providing increased RF performance.	21
VCX1-2K	V-Clamp Crossover	This crossover connection provides a small 3" standoff at 90°.	6

## 12' XD Series™ V-Frames (4 Sector Kit)

This purpose-built, 4-sector kit contains the 12' XD Series™ V-Frames with included antenna and RRU pipes.

- Features BCAM™ Taper Adjustment System
- Feature our Quick-Plate™ for easy grounding and addition of RRU mounting pipes or unistrut
- Include stiff arms and hardware to mount 2-3/8" and 2-7/8" antenna mounting pipes
- Frames rotate for easy azimuth adjustment
- Contact us for load and engineering data



SKU	Face Width	Ant. Pipe Qty.	Ant. Pipe OD	Ant. Pipe Length	TB Qty.	RRU Pipe Qty.	RRU Pipe OD	RRU Pipe Length
4VFA12XDT3010R4	13'-0"	16	2.875"	120"	8	16	2.375"	72"
4VFA12XDT308R4	13'-0"	16	2.875"	96"	8	16	2.375"	72"
4VFA12XDT3010R2	13'-0"	16	2.875"	120"	8	8	2.375"	72"
4VFA12XDT308R2	13'-0"	16	2.875"	96"	8	8	2.375"	72"
4VFA12XDT210R4	13'-0"	16	2.375"	120"	8	16	2.375"	72"
4VFA12XDT28R4	13'-0"	16	2.375"	96"	8	16	2.375"	72"
4VFA12XDT210R2	13'-0"	16	2.375"	120"	8	8	2.375"	72"
4VFA12XDT28R2	13'-0"	16	2.375"	96"	8	8	2.375"	72"

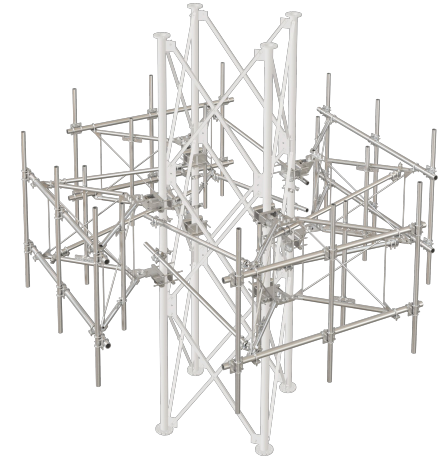
### Works With

SKU	Name	Description	Weight
BCAM-HDLL	BCAM™ Large Round Leg Adapter	This kit enables the attachment of the BCAM™ taper adjustment system to larger round legs.	134
BCAM-HDLL-AA	BCAM™ Large Angle Leg Adapter	This kit enables the attachment of the BCAM™ taper adjustment system to larger angle legs.	131
RRU-FU2	Full Universal RRU Mount	This universal RRU mount enables the mounting of up to two remote radio units (RRU's).	51
RRUDSM	Dual RRU Swivel Mount (Kit of 2)	These RRU dual swivel mounts enable the mounting of multiple RRU's.	41
VPM-K	V-Frame Pipe Mount Kit	This kit provides an additional attachment point on sector frames for RRUs while providing increased RF performance.	21
VCX1-2K	V-Clamp Crossover	This crossover connection provides a small 3" standoff at 90°.	6

## 8' HD Series™ V-Frames (4 Sector Kit)

This purpose-built, 4-sector kit contains the 8' HD Series™ V-Frames with included antenna and RRU pipes.

- Features BCAM™ Taper Adjustment System
- Feature our Quick-Plate™ for easy grounding and addition of RRU mounting pipes or unistrut
- Include stiff arms and hardware to mount 2-3/8" and 2-7/8" antenna mounting pipes
- Frames rotate for easy azimuth adjustment
- Contact us for load and engineering data



SKU	Face Width	Ant. Pipe Qty.	Ant. Pipe OD	Ant. Pipe Length	TB Qty.	RRU Pipe Qty.	RRU Pipe OD	RRU Pipe Length
4VFA8HDT3010R4	9'-0"	12	2.875"	120"	8	16	2.375"	72"
4VFA8HDT308R4	9'-0"	12	2.875"	96"	8	16	2.375"	72"
4VFA8HDT3010R2	9'-0"	12	2.875"	120"	8	8	2.375"	72"
4VFA8HDT308R2	9'-0"	12	2.875"	96"	8	8	2.375"	72"
4VFA8HDT210R4	9'-0"	12	2.375"	120"	8	16	2.375"	72"
4VFA8HDT28R4	9'-0"	12	2.375"	96"	8	16	2.375"	72"
4VFA8HDT210R2	9'-0"	12	2.375"	120"	8	8	2.375"	72"
4VFA8HDT28R2	9'-0"	12	2.375"	96"	8	8	2.375"	72"

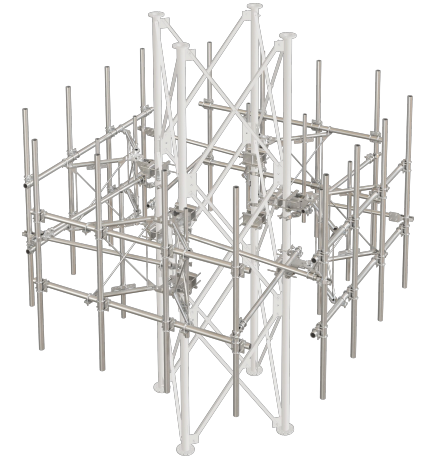
### Works With

SKU	Name	Description	Weight
BCAM-HDLL	BCAM™ Large Round Leg Adapter	This kit enables the attachment of the BCAM™ taper adjustment system to larger round legs.	134
BCAM-HDLL-AA	BCAM™ Large Angle Leg Adapter	This kit enables the attachment of the BCAM™ taper adjustment system to larger angle legs.	131
RRU-FU2	Full Universal RRU Mount	This universal RRU mount enables the mounting of up to two remote radio units (RRU's).	51
RRUDSM	Dual RRU Swivel Mount (Kit of 2)	These RRU dual swivel mounts enable the mounting of multiple RRU's.	41
VPM-K	V-Frame Pipe Mount Kit	This kit provides an additional attachment point on sector frames for RRUs while providing increased RF performance.	21
VCX1-2K	V-Clamp Crossover	This crossover connection provides a small 3" standoff at 90°.	6

## 10' HD Series™ V-Frames (4 Sector Kit)

This purpose-built, 4-sector kit contains the 10' HD Series™ V-Frames with included antenna and RRU pipes.

- Features BCAM™ Taper Adjustment System
- Feature our Quick-Plate™ for easy grounding and addition of RRU mounting pipes or unistrut
- Include stiff arms and hardware to mount 2-3/8" and 2-7/8" antenna mounting pipes
- Frames rotate for easy azimuth adjustment
- Contact us for load and engineering data



SKU	Face Width	Ant. Pipe Qty.	Ant. Pipe OD	Ant. Pipe Length	TB Qty.	RRU Pipe Qty.	RRU Pipe OD	RRU Pipe Length
4VFA10HDT3010R4	11'-0"	16	2.875"	120"	8	16	2.375"	72"
4VFA10HDT308R4	11'-0"	16	2.875"	96"	8	16	2.375"	72"
4VFA10HDT3010R2	11'-0"	16	2.875"	120"	8	8	2.375"	72"
4VFA10HDT308R2	11'-0"	16	2.875"	96"	8	8	2.375"	72"
4VFA10HDT210R4	11'-0"	16	2.375"	120"	8	16	2.375"	72"
4VFA10HDT28R4	11'-0"	16	2.375"	96"	8	16	2.375"	72"
4VFA10HDT210R2	11'-0"	16	2.375"	120"	8	8	2.375"	72"
4VFA10HDT28R2	11'-0"	16	2.375"	96"	8	8	2.375"	72"

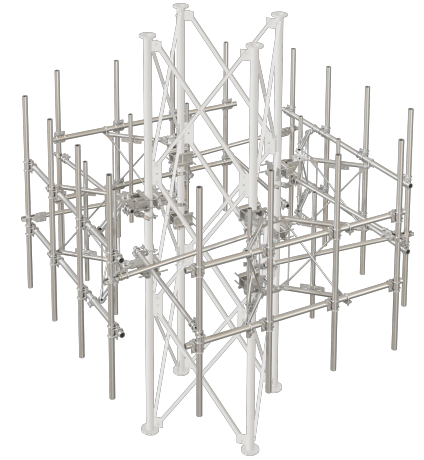
### Works With

SKU	Name	Description	Weight
BCAM-HDLL	BCAM™ Large Round Leg Adapter	This kit enables the attachment of the BCAM™ taper adjustment system to larger round legs.	134
BCAM-HDLL-AA	BCAM™ Large Angle Leg Adapter	This kit enables the attachment of the BCAM™ taper adjustment system to larger angle legs.	131
RRU-FU2	Full Universal RRU Mount	This universal RRU mount enables the mounting of up to two remote radio units (RRU's).	51
RRUDSM	Dual RRU Swivel Mount (Kit of 2)	These RRU dual swivel mounts enable the mounting of multiple RRU's.	41
VPM-K	V-Frame Pipe Mount Kit	This kit provides an additional attachment point on sector frames for RRUs while providing increased RF performance.	21
VCX1-2K	V-Clamp Crossover	This crossover connection provides a small 3" standoff at 90°.	6

## 12' HD Series™ V-Frames (4 Sector Kit)

This purpose-built, 4-sector kit contains the 12' HD Series™ V-Frames with included antenna and RRU pipes.

- Features BCAM™ Taper Adjustment System
- Feature our Quick-Plate™ for easy grounding and addition of RRU mounting pipes or unistrut
- Include stiff arms and hardware to mount 2-3/8" and 2-7/8" antenna mounting pipes
- Frames rotate for easy azimuth adjustment
- Contact us for load and engineering data



SKU	Face Width	Ant. Pipe Qty.	Ant. Pipe OD	Ant. Pipe Length	TB Qty.	RRU Pipe Qty.	RRU Pipe OD	RRU Pipe Length
4VFA12HDT3010R4	13'-0"	16	2.875"	120"	8	16	2.375"	72"
4VFA12HDT308R4	13'-0"	16	2.875"	96"	8	16	2.375"	72"
4VFA12HDT3010R2	13'-0"	16	2.875"	120"	8	8	2.375"	72"
4VFA12HDT308R2	13'-0"	16	2.875"	96"	8	8	2.375"	72"
4VFA12HDT210R4	13'-0"	16	2.375"	120"	8	16	2.375"	72"
4VFA12HDT28R4	13'-0"	16	2.375"	96"	8	16	2.375"	72"
4VFA12HDT210R2	13'-0"	16	2.375"	120"	8	8	2.375"	72"
4VFA12HDT28R2	13'-0"	16	2.375"	96"	8	8	2.375"	72"

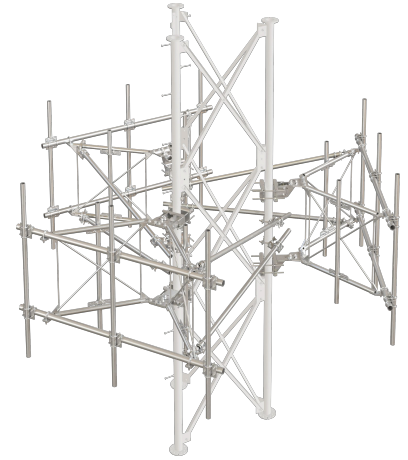
### Works With

SKU	Name	Description	Weight
BCAM-HDLL	BCAM™ Large Round Leg Adapter	This kit enables the attachment of the BCAM™ taper adjustment system to larger round legs.	134
BCAM-HDLL-AA	BCAM™ Large Angle Leg Adapter	This kit enables the attachment of the BCAM™ taper adjustment system to larger angle legs.	131
RRU-FU2	Full Universal RRU Mount	This universal RRU mount enables the mounting of up to two remote radio units (RRU's).	51
RRUDSM	Dual RRU Swivel Mount (Kit of 2)	These RRU dual swivel mounts enable the mounting of multiple RRU's.	41
VPM-K	V-Frame Pipe Mount Kit	This kit provides an additional attachment point on sector frames for RRUs while providing increased RF performance.	21
VCX1-2K	V-Clamp Crossover	This crossover connection provides a small 3" standoff at 90°.	6

## 8' XD Series™ V-Frames (3 Sector Kit)

This purpose-built, 3-sector kit contains the 8' XD Series™ V-Frames with included antenna and RRU pipes.

- Features BCAM™ Taper Adjustment System
- Feature our Quick-Plate™ for easy grounding and addition of RRU mounting pipes or unistrut
- Include stiff arms and hardware to mount 2-3/8" and 2-7/8" antenna mounting pipes
- Frames rotate for easy azimuth adjustment
- Contact us for load and engineering data



SKU	Face Width	Ant. Pipe Qty.	Ant. Pipe OD	Ant. Pipe Length	TB Qty.	RRU Pipe Qty.	RRU Pipe OD	RRU Pipe Length
3VFA8XDT3010R4	9'-0"	9	2.875"	120"	6	12	2.375"	72"
3VFA8XDT308R4	9'-0"	9	2.875"	96"	6	12	2.375"	72"
3VFA8XDT3010R2	9'-0"	9	2.875"	120"	6	6	2.375"	72"
3VFA8XDT308R2	9'-0"	9	2.875"	96"	6	6	2.375"	72"
3VFA8XDT210R4	9'-0"	9	2.375"	120"	6	12	2.375"	72"
3VFA8XDT28R4	9'-0"	9	2.375"	96"	6	12	2.375"	72"
3VFA8XDT210R2	9'-0"	9	2.375"	120"	6	6	2.375"	72"
3VFA8XDT28R2	9'-0"	9	2.375"	96"	6	6	2.375"	72"

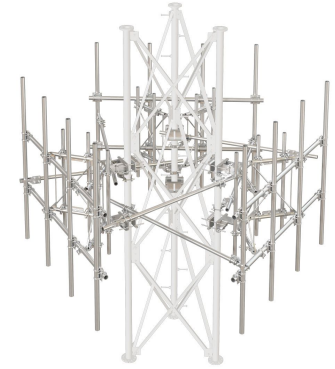
### Works With

SKU	Name	Description	Weight
BCAM-HDLL	BCAM™ Large Round Leg Adapter	This kit enables the attachment of the BCAM™ taper adjustment system to larger round legs.	134
BCAM-HDLL-AA	BCAM™ Large Angle Leg Adapter	This kit enables the attachment of the BCAM™ taper adjustment system to larger angle legs.	131
RRU-FU2	Full Universal RRU Mount	This universal RRU mount enables the mounting of up to two remote radio units (RRU's).	51
RRUDSM	Dual RRU Swivel Mount (Kit of 2)	These RRU dual swivel mounts enable the mounting of multiple RRU's.	41
VPM-K	V-Frame Pipe Mount Kit	This kit provides an additional attachment point on sector frames for RRUs while providing increased RF performance.	21
VCX1-2K	V-Clamp Crossover	This crossover connection provides a small 3" standoff at 90°.	6

## 10' XD Series™ V-Frames (3 Sector Kit)

This purpose-built, 3-sector kit contains the 10' XD Series™ V-Frames with included antenna and RRU pipes.

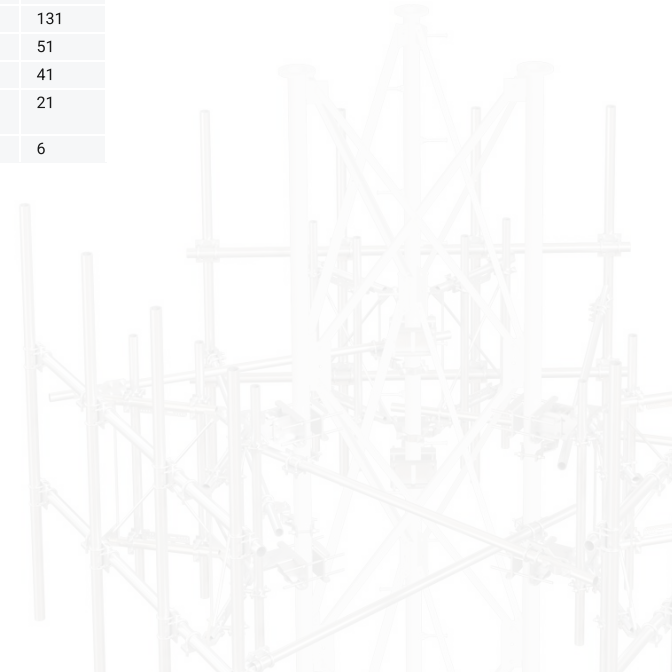
- Features BCAM™ Taper Adjustment System
- Feature our Quick-Plate™ for easy grounding and addition of RRU mounting pipes or unistrut
- Include stiff arms and hardware to mount 2-3/8" and 2-7/8" antenna mounting pipes
- Frames rotate for easy azimuth adjustment
- Contact us for load and engineering data



SKU	Face Width	Ant. Pipe Qty.	Ant. Pipe OD	Ant. Pipe Length	TB Qty.	RRU Pipe Qty.	RRU Pipe OD	RRU Pipe Length
3VFA10XDT3010R4	11'-0"	12	2.875"	120"	6	12	2.375"	72"
3VFA10XDT308R4	11'-0"	12	2.875"	96"	6	12	2.375"	72"
3VFA10XDT3010R2	11'-0"	12	2.875"	120"	6	6	2.375"	72"
3VFA10XDT308R2	11'-0"	12	2.875"	96"	6	6	2.375"	72"
3VFA10XDT210R4	11'-0"	12	2.375"	120"	6	12	2.375"	72"
3VFA10XDT28R4	11'-0"	12	2.375"	96"	6	12	2.375"	72"
3VFA10XDT210R2	11'-0"	12	2.375"	120"	6	6	2.375"	72"
3VFA10XDT28R2	11'-0"	12	2.375"	96"	6	6	2.375"	72"

### Works With

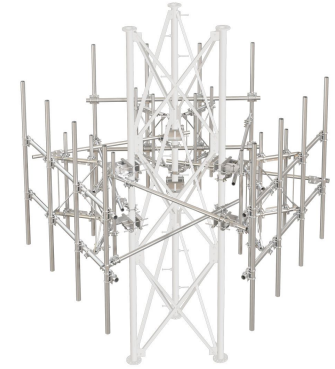
SKU	Name	Description	Weight
BCAM-HDLL	BCAM™ Large Round Leg Adapter	This kit enables the attachment of the BCAM™ taper adjustment system to larger round legs.	134
BCAM-HDLL-AA	BCAM™ Large Angle Leg Adapter	This kit enables the attachment of the BCAM™ taper adjustment system to larger angle legs.	131
RRU-FU2	Full Universal RRU Mount	This universal RRU mount enables the mounting of up to two remote radio units (RRU's).	51
RRUDSM	Dual RRU Swivel Mount (Kit of 2)	These RRU dual swivel mounts enable the mounting of multiple RRU's.	41
VPM-K	V-Frame Pipe Mount Kit	This kit provides an additional attachment point on sector frames for RRU's while providing increased RF performance.	21
VCX1-2K	V-Clamp Crossover	This crossover connection provides a small 3" standoff at 90°.	6



## 12' XD Series™ V-Frames (3 Sector Kit)

This purpose-built, 3-sector kit contains the 12' XD Series™ V-Frames with included antenna and RRU pipes.

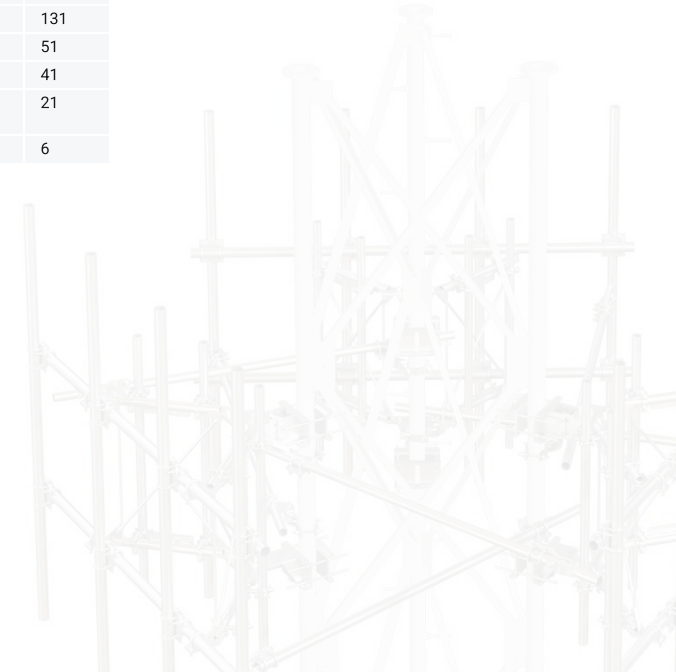
- Features BCAM™ Taper Adjustment System
- Feature our Quick-Plate™ for easy grounding and addition of RRU mounting pipes or unistrut
- Include stiff arms and hardware to mount 2-3/8" and 2-7/8" antenna mounting pipes
- Frames rotate for easy azimuth adjustment
- Contact us for load and engineering data



SKU	Face Width	Ant. Pipe Qty.	Ant. Pipe OD	Ant. Pipe Length	TB Qty.	RRU Pipe Qty.	RRU Pipe OD	RRU Pipe Length
3VFA12XDT3010R4	13'-0"	12	2.875"	120"	6	12	2.375"	72"
3VFA12XDT308R4	13'-0"	12	2.875"	96"	6	12	2.375"	72"
3VFA12XDT3010R2	13'-0"	12	2.875"	120"	6	6	2.375"	72"
3VFA12XDT308R2	13'-0"	12	2.875"	96"	6	6	2.375"	72"
3VFA12XDT210R4	13'-0"	12	2.375"	120"	6	12	2.375"	72"
3VFA12XDT28R4	13'-0"	12	2.375"	96"	6	12	2.375"	72"
3VFA12XDT210R2	13'-0"	12	2.375"	120"	6	6	2.375"	72"
3VFA12XDT28R2	13'-0"	12	2.375"	96"	6	6	2.375"	72"

### Works With

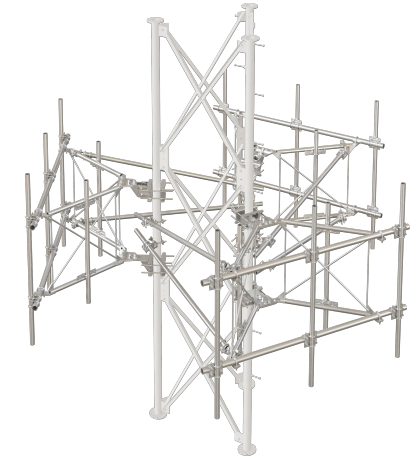
SKU	Name	Description	Weight
BCAM-HDLL	BCAM™ Large Round Leg Adapter	This kit enables the attachment of the BCAM™ taper adjustment system to larger round legs.	134
BCAM-HDLL-AA	BCAM™ Large Angle Leg Adapter	This kit enables the attachment of the BCAM™ taper adjustment system to larger angle legs.	131
RRU-FU2	Full Universal RRU Mount	This universal RRU mount enables the mounting of up to two remote radio units (RRU's).	51
RRUDSM	Dual RRU Swivel Mount (Kit of 2)	These RRU dual swivel mounts enable the mounting of multiple RRU's.	41
VPM-K	V-Frame Pipe Mount Kit	This kit provides an additional attachment point on sector frames for RRUs while providing increased RF performance.	21
VCX1-2K	V-Clamp Crossover	This crossover connection provides a small 3" standoff at 90°.	6



## 8' HD Series™ V-Frames (3 Sector Kit)

This purpose-built, 3-sector kit contains the 8' HD Series™ V-Frames with included antenna and RRU pipes.

- Features BCAM™ Taper Adjustment System
- Feature our Quick-Plate™ for easy grounding and addition of RRU mounting pipes or unistrut
- Include stiff arms and hardware to mount 2-3/8" and 2-7/8" antenna mounting pipes
- Frames rotate for easy azimuth adjustment
- Contact us for load and engineering data



SKU	Face Width	Ant. Pipe Qty.	Ant. Pipe OD	Ant. Pipe Length	TB Qty.	RRU Pipe Qty.	RRU Pipe OD	RRU Pipe Length
3VFA8HDT3010R4	9'-0"	9	2.875"	120"	6	12	2.375"	72"
3VFA8HDT308R4	9'-0"	9	2.875"	96"	6	12	2.375"	72"
3VFA8HDT3010R2	9'-0"	9	2.875"	120"	6	6	2.375"	72"
3VFA8HDT308R2	9'-0"	9	2.875"	96"	6	6	2.375"	72"
3VFA8HDT210R4	9'-0"	9	2.375"	120"	6	12	2.375"	72"
3VFA8HDT28R4	9'-0"	9	2.375"	96"	6	12	2.375"	72"
3VFA8HDT210R2	9'-0"	9	2.375"	120"	6	6	2.375"	72"
3VFA8HDT28R2	9'-0"	9	2.375"	96"	6	6	2.375"	72"

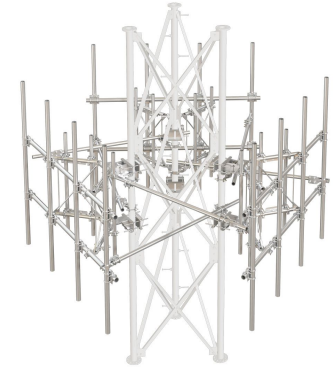
### Works With

SKU	Name	Description	Weight
BCAM-HDLL	BCAM™ Large Round Leg Adapter	This kit enables the attachment of the BCAM™ taper adjustment system to larger round legs.	134
BCAM-HDLL-AA	BCAM™ Large Angle Leg Adapter	This kit enables the attachment of the BCAM™ taper adjustment system to larger angle legs.	131
RRU-FU2	Full Universal RRU Mount	This universal RRU mount enables the mounting of up to two remote radio units (RRU's).	51
RRUDSM	Dual RRU Swivel Mount (Kit of 2)	These RRU dual swivel mounts enable the mounting of multiple RRU's.	41
VPM-K	V-Frame Pipe Mount Kit	This kit provides an additional attachment point on sector frames for RRUs while providing increased RF performance.	21
VCX1-2K	V-Clamp Crossover	This crossover connection provides a small 3" standoff at 90°.	6

## 10' HD Series™ V-Frames (3 Sector Kit)

This purpose-built, 3-sector kit contains the 10' HD Series™ V-Frames with included antenna and RRU pipes.

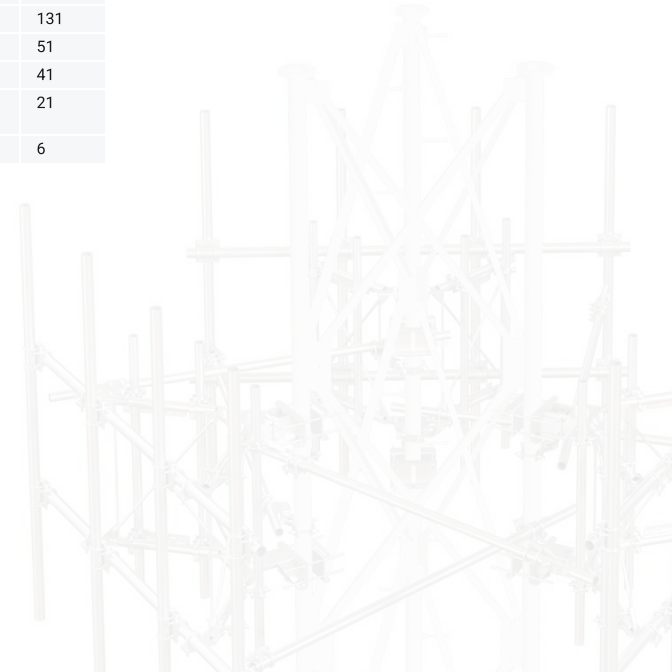
- Features BCAM™ Taper Adjustment System
- Feature our Quick-Plate™ for easy grounding and addition of RRU mounting pipes or unistrut
- Include stiff arms and hardware to mount 2-3/8" and 2-7/8" antenna mounting pipes
- Frames rotate for easy azimuth adjustment
- Contact us for load and engineering data



SKU	Face Width	Ant. Pipe Qty.	Ant. Pipe OD	Ant. Pipe Length	TB Qty.	RRU Pipe Qty.	RRU Pipe OD	RRU Pipe Length
3VFA10HDT3010R4	11'-0"	12	2.875"	120"	6	12	2.375"	72"
3VFA10HDT308R4	11'-0"	12	2.875"	96"	6	12	2.375"	72"
3VFA10HDT3010R2	11'-0"	12	2.875"	120"	6	6	2.375"	72"
3VFA10HDT308R2	11'-0"	12	2.875"	96"	6	6	2.375"	72"
3VFA10HDT210R4	11'-0"	12	2.375"	120"	6	12	2.375"	72"
3VFA10HDT28R4	11'-0"	12	2.375"	96"	6	12	2.375"	72"
3VFA10HDT210R2	11'-0"	12	2.375"	120"	6	6	2.375"	72"
3VFA10HDT28R2	11'-0"	12	2.375"	96"	6	6	2.375"	72"

### Works With

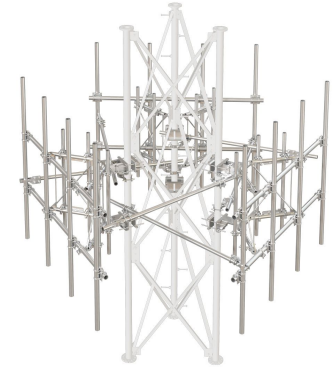
SKU	Name	Description	Weight
BCAM-HDLL	BCAM™ Large Round Leg Adapter	This kit enables the attachment of the BCAM™ taper adjustment system to larger round legs.	134
BCAM-HDLL-AA	BCAM™ Large Angle Leg Adapter	This kit enables the attachment of the BCAM™ taper adjustment system to larger angle legs.	131
RRU-FU2	Full Universal RRU Mount	This universal RRU mount enables the mounting of up to two remote radio units (RRU's).	51
RRUDSM	Dual RRU Swivel Mount (Kit of 2)	These RRU dual swivel mounts enable the mounting of multiple RRU's.	41
VPM-K	V-Frame Pipe Mount Kit	This kit provides an additional attachment point on sector frames for RRUs while providing increased RF performance.	21
VCX1-2K	V-Clamp Crossover	This crossover connection provides a small 3" standoff at 90°.	6



## 12' HD Series™ V-Frames (3 Sector Kit)

This purpose-built, 3-sector kit contains the 12' HD Series™ V-Frames with included antenna and RRU pipes.

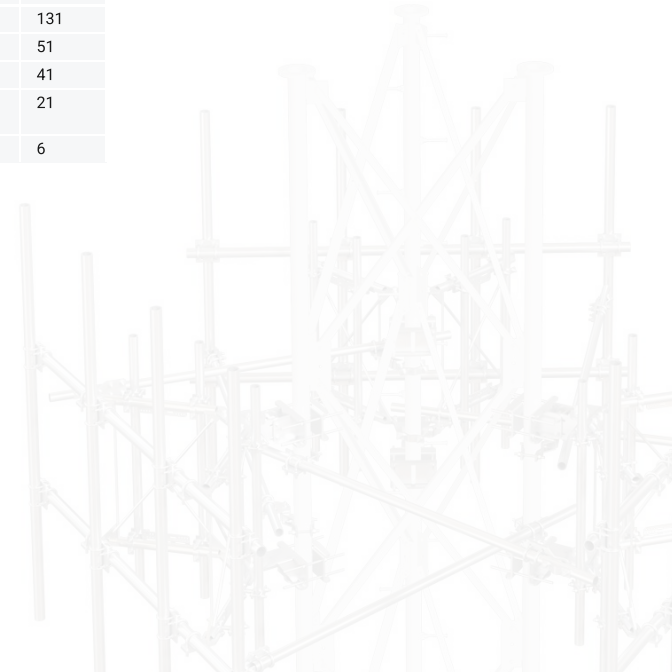
- Features BCAM™ Taper Adjustment System
- Feature our Quick-Plate™ for easy grounding and addition of RRU mounting pipes or unistrut
- Include stiff arms and hardware to mount 2-3/8" and 2-7/8" antenna mounting pipes
- Frames rotate for easy azimuth adjustment
- Contact us for load and engineering data



SKU	Face Width	Ant. Pipe Qty.	Ant. Pipe OD	Ant. Pipe Length	TB Qty.	RRU Pipe Qty.	RRU Pipe OD	RRU Pipe Length
3VFA12HDT3010R4	13'-0"	12	2.875"	120"	6	12	2.375"	72"
3VFA12HDT308R4	13'-0"	12	2.875"	96"	6	12	2.375"	72"
3VFA12HDT3010R2	13'-0"	12	2.875"	120"	6	6	2.375"	72"
3VFA12HDT308R2	13'-0"	12	2.875"	96"	6	6	2.375"	72"
3VFA12HDT210R4	13'-0"	12	2.375"	120"	6	12	2.375"	72"
3VFA12HDT28R4	13'-0"	12	2.375"	96"	6	12	2.375"	72"
3VFA12HDT210R2	13'-0"	12	2.375"	120"	6	6	2.375"	72"
3VFA12HDT28R2	13'-0"	12	2.375"	96"	6	6	2.375"	72"

### Works With

SKU	Name	Description	Weight
BCAM-HDLL	BCAM™ Large Round Leg Adapter	This kit enables the attachment of the BCAM™ taper adjustment system to larger round legs.	134
BCAM-HDLL-AA	BCAM™ Large Angle Leg Adapter	This kit enables the attachment of the BCAM™ taper adjustment system to larger angle legs.	131
RRU-FU2	Full Universal RRU Mount	This universal RRU mount enables the mounting of up to two remote radio units (RRU's).	51
RRUDSM	Dual RRU Swivel Mount (Kit of 2)	These RRU dual swivel mounts enable the mounting of multiple RRU's.	41
VPM-K	V-Frame Pipe Mount Kit	This kit provides an additional attachment point on sector frames for RRUs while providing increased RF performance.	21
VCX1-2K	V-Clamp Crossover	This crossover connection provides a small 3" standoff at 90°.	6



## 8' XD Series™ V-Frames (1 Sector Kit, w/ Horizontal Pipe)

This purpose-built, 1-sector face kit contains the 8' XD Series™ with face mount, includes three (3) antenna and RRU pipes.

- Features BCAM™ Taper Adjustment System
- Feature our Quick-Plate™ for easy grounding and addition of RRU mounting pipes or unistrut
- Include stiff arm and hardware to mount 2-3/8" and 2-7/8" antenna mounting pipes
- Frames rotate for easy azimuth adjustment
- Contact us for load and engineering data

SKU	Face Length	Face OD	Ant. Pipe OD	Ant. Pipe Length	TB Qty.	RRU Pipe Qty.	RRU Pipe OD	RRU Pipe Length
VFA8XDF33010R4	132"	3.5"	2.875"	120"	2	4	2.375"	72"
VFA8XDF43010R4	126"	4.5"	2.875"	120"	2	4	2.375"	72"
VFA8XDF33010R2	132"	3.5"	2.875"	120"	2	2	2.375"	72"
VFA8XDF43010R2	126"	4.5"	2.875"	120"	2	2	2.375"	72"
VFA8XDF3308R4	132"	3.5"	2.875"	96"	2	4	2.375"	72"
VFA8XDF4308R4	126"	4.5"	2.875"	96"	2	4	2.375"	72"
VFA8XDF3308R2	132"	3.5"	2.875"	96"	2	2	2.375"	72"
VFA8XDF4308R2	126"	4.5"	2.875"	96"	2	2	2.375"	72"
VFA8XDF3210R4	132"	3.5"	2.375"	120"	2	4	2.375"	72"
VFA8XDF4210R4	126"	4.5"	2.375"	120"	2	4	2.375"	72"
VFA8XDF3210R2	132"	3.5"	2.375"	120"	2	2	2.375"	72"
VFA8XDF4210R2	126"	4.5"	2.375"	120"	2	2	2.375"	72"
VFA8XDF328R4	132"	3.5"	2.375"	96"	2	4	2.375"	72"
VFA8XDF428R4	126"	4.5"	2.375"	96"	2	4	2.375"	72"
VFA8XDF328R2	132"	3.5"	2.375"	96"	2	2	2.375"	72"
VFA8XDF428R2	126"	4.5"	2.375"	96"	2	2	2.375"	72"



### Works With

SKU	Name	Description	Weight
BCAM-HDLL	BCAM™ Large Round Leg Adapter	This kit enables the attachment of the BCAM™ taper adjustment system to larger round legs.	134
BCAM-HDLL-AA	BCAM™ Large Angle Leg Adapter	This kit enables the attachment of the BCAM™ taper adjustment system to larger angle legs.	131
RRU-FU2	Full Universal RRU Mount	This universal RRU mount enables the mounting of up to two remote radio units (RRU's).	51
RRUDSM	Dual RRU Swivel Mount (Kit of 2)	These RRU dual swivel mounts enable the mounting of multiple RRU's.	41
VPM-K	V-Frame Pipe Mount Kit	This kit provides an additional attachment point on sector frames for RRUs while providing increased RF performance.	21
VCX1-2K	V-Clamp Crossover	This crossover connection provides a small 3" standoff at 90°.	6

## 8' XD Series™ V-Frames (1 Sector Kit, wo/ Horizontal Pipe)

This purpose-built, 1-sector face kit contains the 8' XD Series™ with face mount (no horizontal), includes three (3) antenna and RRU pipes.

- Features BCAM™ Taper Adjustment System
- Feature our Quick-Plate™ for easy grounding and addition of RRU mounting pipes or unistrut
- Include stiff arm and hardware to mount 2-3/8" and 2-7/8" antenna mounting pipes
- Frames rotate for easy azimuth adjustment
- Contact us for load and engineering data



SKU	Face Length	Face OD	Ant. Pipe OD	Ant. Pipe Length	TB Qty.	RRU Pipe Qty.	RRU Pipe OD	RRU Pipe Length
VFA8XDFN3010R4	No Pipe	No Pipe	2.875"	120"	2	4	2.375"	72"
VFA8XDFN3010R2	No Pipe	No Pipe	2.875"	120"	2	2	2.375"	72"
VFA8XDFN308R4	No Pipe	No Pipe	2.875"	96"	2	4	2.375"	72"
VFA8XDFN308R2	No Pipe	No Pipe	2.875"	96"	2	2	2.375"	72"
VFA8XDFN210R4	No Pipe	No Pipe	2.375"	120"	2	4	2.375"	72"
VFA8XDFN210R2	No Pipe	No Pipe	2.375"	120"	2	2	2.375"	72"
VFA8XDFN28R4	No Pipe	No Pipe	2.375"	96"	2	4	2.375"	72"
VFA8XDFN28R2	No Pipe	No Pipe	2.375"	96"	2	2	2.375"	72"

### Works With

SKU	Name	Description	Weight
BCAM-HDLL	BCAM™ Large Round Leg Adapter	This kit enables the attachment of the BCAM™ taper adjustment system to larger round legs.	134
BCAM-HDLL-AA	BCAM™ Large Angle Leg Adapter	This kit enables the attachment of the BCAM™ taper adjustment system to larger angle legs.	131
RRU-FU2	Full Universal RRU Mount	This universal RRU mount enables the mounting of up to two remote radio units (RRU's).	51
RRUDSM	Dual RRU Swivel Mount (Kit of 2)	These RRU dual swivel mounts enable the mounting of multiple RRU's.	41
VPM-K	V-Frame Pipe Mount Kit	This kit provides an additional attachment point on sector frames for RRUs while providing increased RF performance.	21

## 10' XD Series™ V-Frames (1 Sector Kit, w/ Horizontal Pipe)

This purpose-built, 1-sector face kit contains the 10' XD Series™ with face mount, includes four (4) antenna and RRU pipes.

- Features BCAM™ Taper Adjustment System
- Feature our Quick-Plate™ for easy grounding and addition of RRU mounting pipes or unistrut
- Include stiff arm and hardware to mount 2-3/8" and 2-7/8" antenna mounting pipes
- Frames rotate for easy azimuth adjustment
- Contact us for load and engineering data

SKU	Face Length	Face OD	Ant. Pipe OD	Ant. Pipe Length	TB Qty.	RRU Pipe Qty.	RRU Pipe OD	RRU Pipe Length
VFA10XDF33010R4	132"	3.5"	2.875"	120"	2	4	2.375"	72"
VFA10XDF43010R4	126"	4.5"	2.875"	120"	2	4	2.375"	72"
VFA10XDF33010R2	132"	3.5"	2.875"	120"	2	2	2.375"	72"
VFA10XDF43010R2	126"	4.5"	2.875"	120"	2	2	2.375"	72"
VFA10XDF3308R4	132"	3.5"	2.875"	96"	2	4	2.375"	72"
VFA10XDF4308R4	126"	4.5"	2.875"	96"	2	4	2.375"	72"
VFA10XDF3308R2	132"	3.5"	2.875"	96"	2	2	2.375"	72"
VFA10XDF4308R2	126"	4.5"	2.875"	96"	2	2	2.375"	72"
VFA10XDF3210R4	132"	3.5"	2.375"	120"	2	4	2.375"	72"
VFA10XDF4210R4	126"	4.5"	2.375"	120"	2	4	2.375"	72"
VFA10XDF3210R2	132"	3.5"	2.375"	120"	2	2	2.375"	72"
VFA10XDF4210R2	126"	4.5"	2.375"	120"	2	2	2.375"	72"
VFA10XDF328R4	132"	3.5"	2.375"	96"	2	4	2.375"	72"
VFA10XDF428R4	126"	4.5"	2.375"	96"	2	4	2.375"	72"
VFA10XDF328R2	132"	3.5"	2.375"	96"	2	2	2.375"	72"
VFA10XDF428R2	126"	4.5"	2.375"	96"	2	2	2.375"	72"



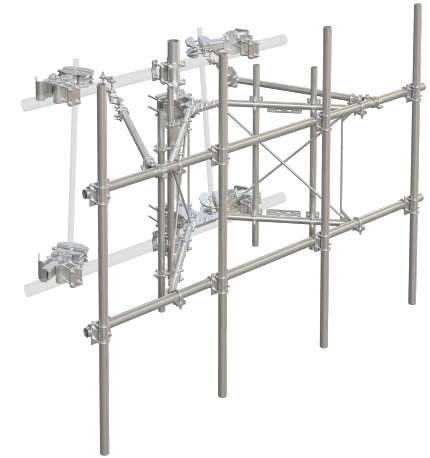
### Works With

SKU	Name	Description	Weight
BCAM-HDLL	BCAM™ Large Round Leg Adapter	This kit enables the attachment of the BCAM™ taper adjustment system to larger round legs.	134
BCAM-HDLL-AA	BCAM™ Large Angle Leg Adapter	This kit enables the attachment of the BCAM™ taper adjustment system to larger angle legs.	131
RRU-FU2	Full Universal RRU Mount	This universal RRU mount enables the mounting of up to two remote radio units (RRU's).	51
RRUDSM	Dual RRU Swivel Mount (Kit of 2)	These RRU dual swivel mounts enable the mounting of multiple RRU's.	41
VPM-K	V-Frame Pipe Mount Kit	This kit provides an additional attachment point on sector frames for RRUs while providing increased RF performance.	21
VCX1-2K	V-Clamp Crossover	This crossover connection provides a small 3" standoff at 90°.	6

## 10' XD Series™ V-Frames (1 Sector Kit, wo/ Horizontal Pipe)

This purpose-built, 1-sector face kit contains the 10' XD Series™ with face mount (no horizontal), includes four (4) antenna and RRU pipes.

- Features BCAM™ Taper Adjustment System
- Feature our Quick-Plate™ for easy grounding and addition of RRU mounting pipes or unistrut
- Include stiff arm and hardware to mount 2-3/8" and 2-7/8" antenna mounting pipes
- Frames rotate for easy azimuth adjustment
- Contact us for load and engineering data



SKU	Face Length	Face OD	Ant. Pipe OD	Ant. Pipe Length	TB Qty.	RRU Pipe Qty.	RRU Pipe OD	RRU Pipe Length
VFA10XDFN3010R4	No Pipe	No Pipe	2.875"	120"	2	4	2.375"	72"
VFA10XDFN3010R2	No Pipe	No Pipe	2.875"	120"	2	2	2.375"	72"
VFA10XDFN308R4	No Pipe	No Pipe	2.875"	96"	2	4	2.375"	72"
VFA10XDFN308R2	No Pipe	No Pipe	2.875"	96"	2	2	2.375"	72"
VFA10XDFN210R4	No Pipe	No Pipe	2.375"	120"	2	4	2.375"	72"
VFA10XDFN210R2	No Pipe	No Pipe	2.375"	120"	2	2	2.375"	72"
VFA10XDFN28R4	No Pipe	No Pipe	2.375"	96"	2	4	2.375"	72"
VFA10XDFN28R2	No Pipe	No Pipe	2.375"	96"	2	2	2.375"	72"

### Works With

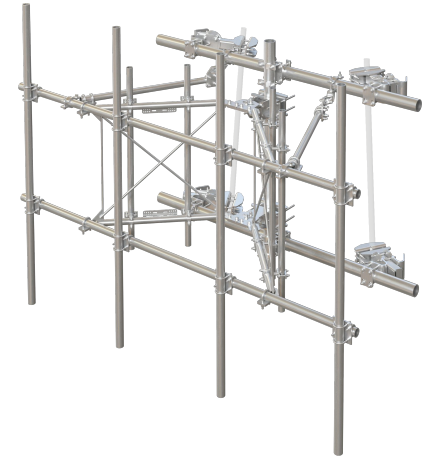
SKU	Name	Description	Weight
BCAM-HDLL	BCAM™ Large Round Leg Adapter	This kit enables the attachment of the BCAM™ taper adjustment system to larger round legs.	134
BCAM-HDLL-AA	BCAM™ Large Angle Leg Adapter	This kit enables the attachment of the BCAM™ taper adjustment system to larger angle legs.	131
RRU-FU2	Full Universal RRU Mount	This universal RRU mount enables the mounting of up to two remote radio units (RRU's).	51
RRUDSM	Dual RRU Swivel Mount (Kit of 2)	These RRU dual swivel mounts enable the mounting of multiple RRU's.	41
VPM-K	V-Frame Pipe Mount Kit	This kit provides an additional attachment point on sector frames for RRU's while providing increased RF performance.	21

## 12' XD Series™ V-Frames (1 Sector Kit, w/ Horizontal Pipe)

This purpose-built, 1-sector face kit contains the 12' XD Series™ with face mount, includes four (4) antenna and RRU pipes.

- Features BCAM™ Taper Adjustment System
- Feature our Quick-Plate™ for easy grounding and addition of RRU mounting pipes or unistrut
- Include stiff arm and hardware to mount 2-3/8" and 2-7/8" antenna mounting pipes
- Frames rotate for easy azimuth adjustment
- Contact us for load and engineering data

SKU	Face Length	Face OD	Ant. Pipe OD	Ant. Pipe Length	TB Qty.	RRU Pipe Qty.	RRU Pipe OD	RRU Pipe Length
VFA12XDF33010R4	132"	3.5"	2.875"	120"	2	4	2.375"	72"
VFA12XDF43010R4	126"	4.5"	2.875"	120"	2	4	2.375"	72"
VFA12XDF33010R2	132"	3.5"	2.875"	120"	2	2	2.375"	72"
VFA12XDF43010R2	126"	4.5"	2.875"	120"	2	2	2.375"	72"
VFA12XDF3308R4	132"	3.5"	2.875"	96"	2	4	2.375"	72"
VFA12XDF4308R4	126"	4.5"	2.875"	96"	2	4	2.375"	72"
VFA12XDF3308R2	132"	3.5"	2.875"	96"	2	2	2.375"	72"
VFA12XDF4308R2	126"	4.5"	2.875"	96"	2	2	2.375"	72"
VFA12XDF3210R4	132"	3.5"	2.375"	120"	2	4	2.375"	72"
VFA12XDF4210R4	126"	4.5"	2.375"	120"	2	4	2.375"	72"
VFA12XDF3210R2	132"	3.5"	2.375"	120"	2	2	2.375"	72"
VFA12XDF4210R2	126"	4.5"	2.375"	120"	2	2	2.375"	72"
VFA12XDF328R4	132"	3.5"	2.375"	96"	2	4	2.375"	72"
VFA12XDF428R4	126"	4.5"	2.375"	96"	2	4	2.375"	72"
VFA12XDF328R2	132"	3.5"	2.375"	96"	2	2	2.375"	72"
VFA12XDF428R2	126"	4.5"	2.375"	96"	2	2	2.375"	72"



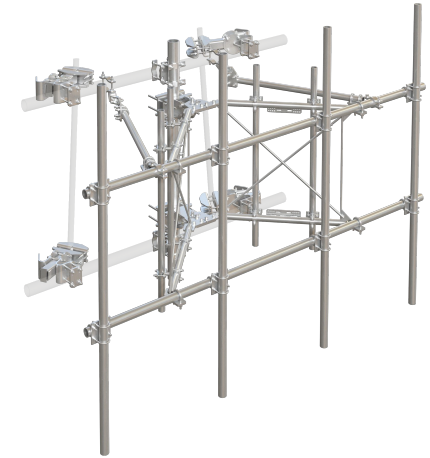
### Works With

SKU	Name	Description	Weight
FACE-LLEG	Large Leg Adapter Kit	This large leg adapter kit works with FACE series mounts to accommodate large pipe and angle.	76
FACE-PM	Pipe Mount Attachment Kit	This hardware kit is used to attach vertical antenna mounting pipes to horizontal face pipes.	52
FSP296-K	2-3/8" Face Strut Pipe Kit	This universal face strut pipe kit allows additional tiebacks to be added.	75

## 12' XD Series™ V-Frames (1 Sector Kit, wo/ Horizontal Pipe)

This purpose-built, 1-sector face kit contains the 12' XD Series™ with face mount (no horizontal), includes four (4) antenna and RRU pipes.

- Features BCAM™ Taper Adjustment System
- Feature our Quick-Plate™ for easy grounding and addition of RRU mounting pipes or unistrut
- Include stiff arm and hardware to mount 2-3/8" and 2-7/8" antenna mounting pipes
- Frames rotate for easy azimuth adjustment
- Contact us for load and engineering data



SKU	Face Length	Face OD	Ant. Pipe OD	Ant. Pipe Length	TB Qty.	RRU Pipe Qty.	RRU Pipe OD	RRU Pipe Length
VFA12XDFN3010R4	No Pipe	No Pipe	2.875"	120"	2	4	2.375"	72"
VFA12XDFN3010R2	No Pipe	No Pipe	2.875"	120"	2	2	2.375"	72"
VFA12XDFN308R4	No Pipe	No Pipe	2.875"	96"	2	4	2.375"	72"
VFA12XDFN308R2	No Pipe	No Pipe	2.875"	96"	2	2	2.375"	72"
VFA12XDFN210R4	No Pipe	No Pipe	2.375"	120"	2	4	2.375"	72"
VFA12XDFN210R2	No Pipe	No Pipe	2.375"	120"	2	2	2.375"	72"
VFA12XDFN28R4	No Pipe	No Pipe	2.375"	96"	2	4	2.375"	72"
VFA12XDFN28R2	No Pipe	No Pipe	2.375"	96"	2	2	2.375"	72"

### Works With

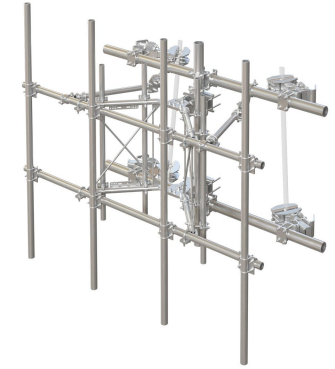
SKU	Name	Description	Weight
FACE-LLEG	Large Leg Adapter Kit	This large leg adapter kit works with FACE series mounts to accommodate large pipe and angle.	76
FACE-PM	Pipe Mount Attachment Kit	This hardware kit is used to attach vertical antenna mounting pipes to horizontal face pipes.	52
FSP296-K	2-3/8" Face Strut Pipe Kit	This universal face strut pipe kit allows additional tiebacks to be added.	75

## 8' HD Series™ V-Frames (1 Sector Kit, w/ Horizontal Pipe)

This purpose-built, 1-sector face kit contains the 8' HD Series™ with face mount, includes three (3) antenna and RRU pipes.

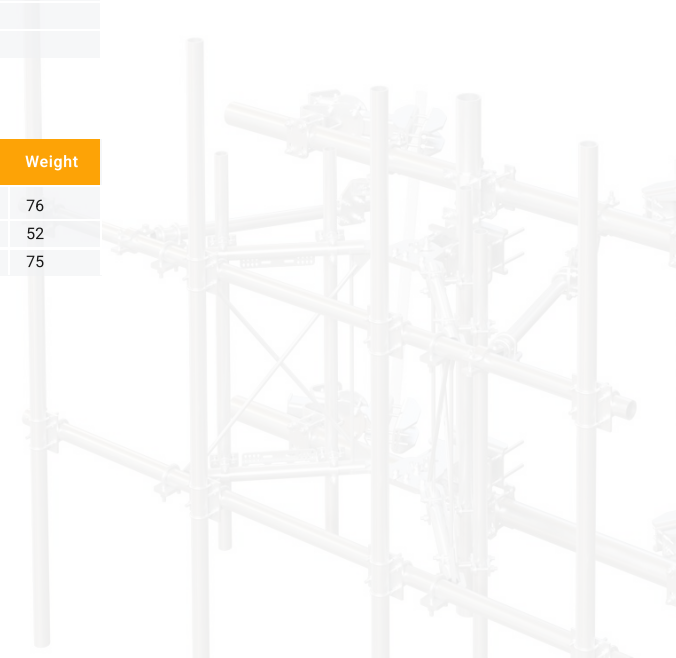
- Features BCAM™ Taper Adjustment System
- Feature our Quick-Plate™ for easy grounding and addition of RRU mounting pipes or unistrut
- Include stiff arm and hardware to mount 2-3/8" and 2-7/8" antenna mounting pipes
- Frames rotate for easy azimuth adjustment
- Contact us for load and engineering data

SKU	Face Length	Face OD	Ant. Pipe OD	Ant. Pipe Length	TB Qty.	RRU Pipe Qty.	RRU Pipe OD	RRU Pipe Length
VFA8HDF33010R4	132"	3.5"	2.875"	120"	2	4	2.375"	72"
VFA8HDF43010R4	126"	4.5"	2.875"	120"	2	4	2.375"	72"
VFA8HDF33010R2	132"	3.5"	2.875"	120"	2	2	2.375"	72"
VFA8HDF43010R2	126"	4.5"	2.875"	120"	2	2	2.375"	72"
VFA8HDF3308R4	132"	3.5"	2.875"	96"	2	4	2.375"	72"
VFA8HDF4308R4	126"	4.5"	2.875"	96"	2	4	2.375"	72"
VFA8HDF3308R2	132"	3.5"	2.875"	96"	2	2	2.375"	72"
VFA8HDF4308R2	126"	4.5"	2.875"	96"	2	2	2.375"	72"
VFA8HDF3210R4	132"	3.5"	2.375"	120"	2	4	2.375"	72"
VFA8HDF4210R4	126"	4.5"	2.375"	120"	2	4	2.375"	72"
VFA8HDF3210R2	132"	3.5"	2.375"	120"	2	2	2.375"	72"
VFA8HDF4210R2	126"	4.5"	2.375"	120"	2	2	2.375"	72"
VFA8HDF328R4	132"	3.5"	2.375"	96"	2	4	2.375"	72"
VFA8HDF428R4	126"	4.5"	2.375"	96"	2	4	2.375"	72"
VFA8HDF328R2	132"	3.5"	2.375"	96"	2	2	2.375"	72"
VFA8HDF428R2	126"	4.5"	2.375"	96"	2	2	2.375"	72"



### Works With

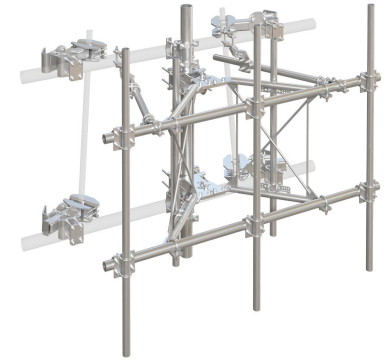
SKU	Name	Description	Weight
FACE-LLEG	Large Leg Adapter Kit	This large leg adapter kit works with FACE series mounts to accommodate large pipe and angle.	76
FACE-PM	Pipe Mount Attachment Kit	This hardware kit is used to attach vertical antenna mounting pipes to horizontal face pipes.	52
FSP296-K	2-3/8" Face Strut Pipe Kit	This universal face strut pipe kit allows additional tiebacks to be added.	75



## 8' HD Series™ V-Frames (1 Sector Kit, wo/ Horizontal Pipe)

This purpose-built, 1-sector face kit contains the 8' HD Series™ with face mount (no horizontal), includes three (3) antenna and RRU pipes.

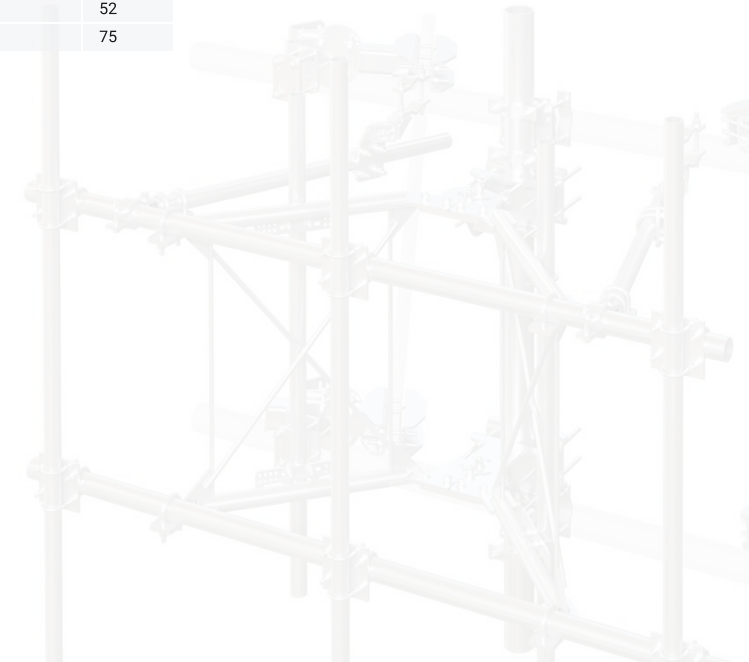
- Features BCAM™ Taper Adjustment System
- Feature our Quick-Plate™ for easy grounding and addition of RRU mounting pipes or unistrut
- Include stiff arm and hardware to mount 2-3/8" and 2-7/8" antenna mounting pipes
- Frames rotate for easy azimuth adjustment
- Contact us for load and engineering data



SKU	Face Length	Face OD	Ant. Pipe OD	Ant. Pipe Length	TB Qty.	RRU Pipe Qty.	RRU Pipe OD	RRU Pipe Length
VFA8HDFN3010R4	No Pipe	No Pipe	2.875"	120"	2	4	2.375"	72"
VFA8HDFN3010R2	No Pipe	No Pipe	2.875"	120"	2	2	2.375"	72"
VFA8HDFN308R4	No Pipe	No Pipe	2.875"	96"	2	4	2.375"	72"
VFA8HDFN308R2	No Pipe	No Pipe	2.875"	96"	2	2	2.375"	72"
VFA8HDFN210R4	No Pipe	No Pipe	2.375"	120"	2	4	2.375"	72"
VFA8HDFN210R2	No Pipe	No Pipe	2.375"	120"	2	2	2.375"	72"
VFA8HDFN28R4	No Pipe	No Pipe	2.375"	96"	2	4	2.375"	72"
VFA8HDFN28R2	No Pipe	No Pipe	2.375"	96"	2	2	2.375"	72"

### Works With

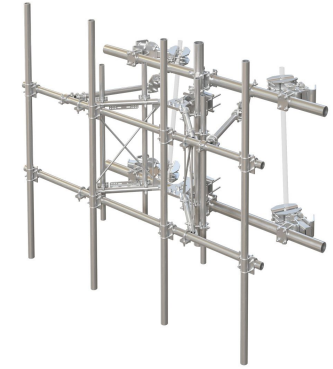
SKU	Name	Description	Weight
FACE-LLEG	Large Leg Adapter Kit	This large leg adapter kit works with FACE series mounts to accommodate large pipe and angle.	76
FACE-PM	Pipe Mount Attachment Kit	This hardware kit is used to attach vertical antenna mounting pipes to horizontal face pipes.	52
FSP296-K	2-3/8" Face Strut Pipe Kit	This universal face strut pipe kit allows additional tiebacks to be added.	75



## 10' HD Series™ V-Frames (1 Sector Kit, w/ Horizontal Pipe)

This purpose-built, 1-sector face kit contains the 10' HD Series™ with face mount, includes four (4) antenna and RRU pipes.

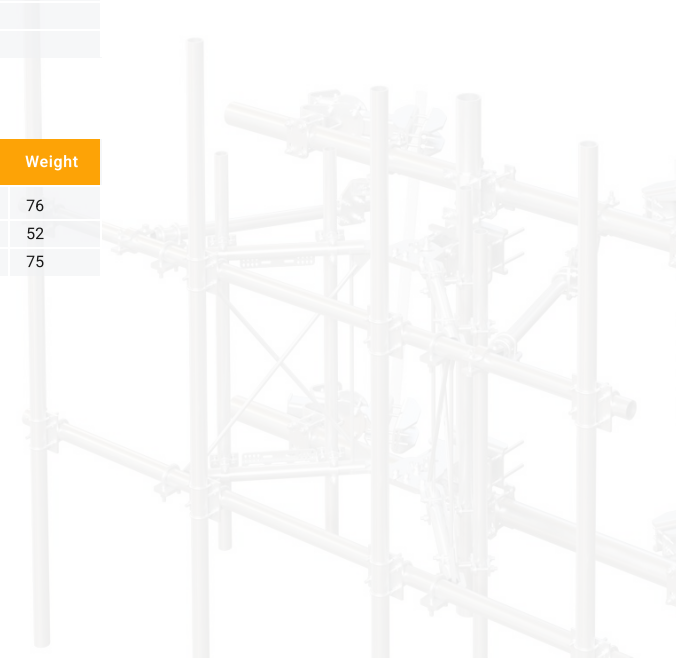
- Features BCAM™ Taper Adjustment System
- Feature our Quick-Plate™ for easy grounding and addition of RRU mounting pipes or unistrut
- Include stiff arm and hardware to mount 2-3/8" and 2-7/8" antenna mounting pipes
- Frames rotate for easy azimuth adjustment
- Contact us for load and engineering data



SKU	Face Length	Face OD	Ant. Pipe OD	Ant. Pipe Length	TB Qty.	RRU Pipe Qty.	RRU Pipe OD	RRU Pipe Length
VFA10HDF33010R4	132"	3.5"	2.875"	120"	2	4	2.375"	72"
VFA10HDF43010R4	126"	4.5"	2.875"	120"	2	4	2.375"	72"
VFA10HDF33010R2	132"	3.5"	2.875"	120"	2	2	2.375"	72"
VFA10HDF43010R2	126"	4.5"	2.875"	120"	2	2	2.375"	72"
VFA10HDF3308R4	132"	3.5"	2.875"	96"	2	4	2.375"	72"
VFA10HDF4308R4	126"	4.5"	2.875"	96"	2	4	2.375"	72"
VFA10HDF3308R2	132"	3.5"	2.875"	96"	2	2	2.375"	72"
VFA10HDF4308R2	126"	4.5"	2.875"	96"	2	2	2.375"	72"
VFA10HDF3210R4	132"	3.5"	2.375"	120"	2	4	2.375"	72"
VFA10HDF4210R4	126"	4.5"	2.375"	120"	2	4	2.375"	72"
VFA10HDF3210R2	132"	3.5"	2.375"	120"	2	2	2.375"	72"
VFA10HDF4210R2	126"	4.5"	2.375"	120"	2	2	2.375"	72"
VFA10HDF328R4	132"	3.5"	2.375"	96"	2	4	2.375"	72"
VFA10HDF428R4	126"	4.5"	2.375"	96"	2	4	2.375"	72"
VFA10HDF328R2	132"	3.5"	2.375"	96"	2	2	2.375"	72"
VFA10HDF428R2	126"	4.5"	2.375"	96"	2	2	2.375"	72"

### Works With

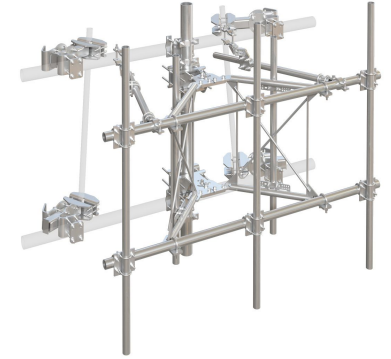
SKU	Name	Description	Weight
FACE-LLEG	Large Leg Adapter Kit	This large leg adapter kit works with FACE series mounts to accommodate large pipe and angle.	76
FACE-PM	Pipe Mount Attachment Kit	This hardware kit is used to attach vertical antenna mounting pipes to horizontal face pipes.	52
FSP296-K	2-3/8" Face Strut Pipe Kit	This universal face strut pipe kit allows additional tiebacks to be added.	75



## 10' HD Series™ V-Frames (1 Sector Kit, wo/ Horizontal Pipe)

This purpose-built, 1-sector face kit contains the 10' HD Series™ with face mount (no horizontal), includes four (4) antenna and RRU pipes.

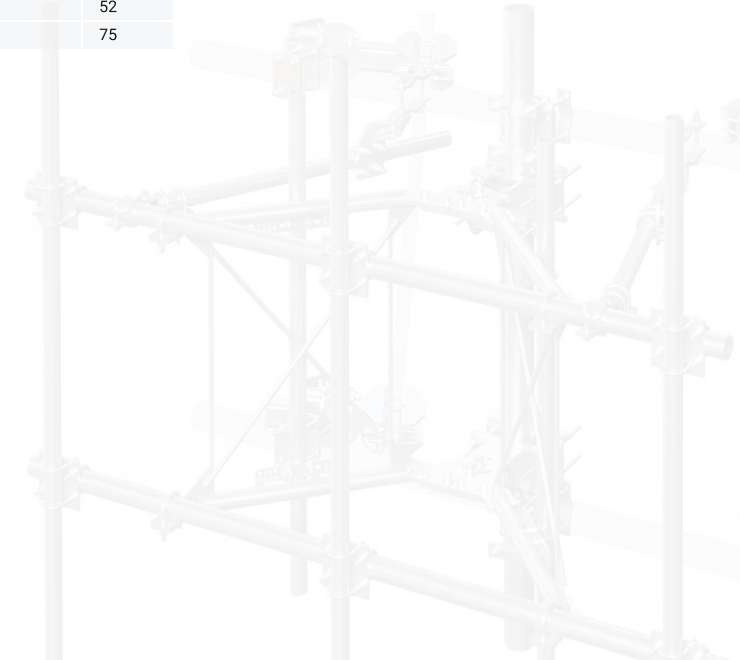
- Features BCAM™ Taper Adjustment System
- Feature our Quick-Plate™ for easy grounding and addition of RRU mounting pipes or unistrut
- Include stiff arm and hardware to mount 2-3/8" and 2-7/8" antenna mounting pipes
- Frames rotate for easy azimuth adjustment
- Contact us for load and engineering data



SKU	Face Length	Face OD	Ant. Pipe OD	Ant. Pipe Length	TB Qty.	RRU Pipe Qty.	RRU Pipe OD	RRU Pipe Length
VFA10HDFN3010R4	No Pipe	No Pipe	2.875"	120"	2	4	2.375"	72"
VFA10HDFN3010R2	No Pipe	No Pipe	2.875"	120"	2	2	2.375"	72"
VFA10HDFN308R4	No Pipe	No Pipe	2.875"	96"	2	4	2.375"	72"
VFA10HDFN308R2	No Pipe	No Pipe	2.875"	96"	2	2	2.375"	72"
VFA10HDFN210R4	No Pipe	No Pipe	2.375"	120"	2	4	2.375"	72"
VFA10HDFN210R2	No Pipe	No Pipe	2.375"	120"	2	2	2.375"	72"
VFA10HDFN28R4	No Pipe	No Pipe	2.375"	96"	2	4	2.375"	72"
VFA10HDFN28R2	No Pipe	No Pipe	2.375"	96"	2	2	2.375"	72"

### Works With

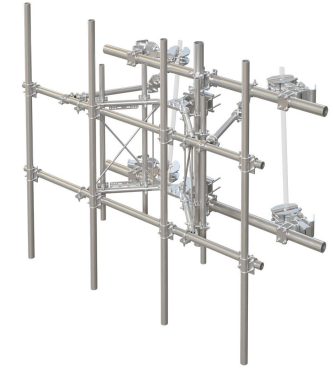
SKU	Name	Description	Weight
FACE-LLEG	Large Leg Adapter Kit	This large leg adapter kit works with FACE series mounts to accommodate large pipe and angle.	76
FACE-PM	Pipe Mount Attachment Kit	This hardware kit is used to attach vertical antenna mounting pipes to horizontal face pipes.	52
FSP296-K	2-3/8" Face Strut Pipe Kit	This universal face strut pipe kit allows additional tiebacks to be added.	75



## 12' HD Series™ V-Frames (1 Sector Kit, w/ Horizontal Pipe)

This purpose-built, 1-sector face kit contains the 12' HD Series™ with face mount, includes four (4) antenna and RRU pipes.

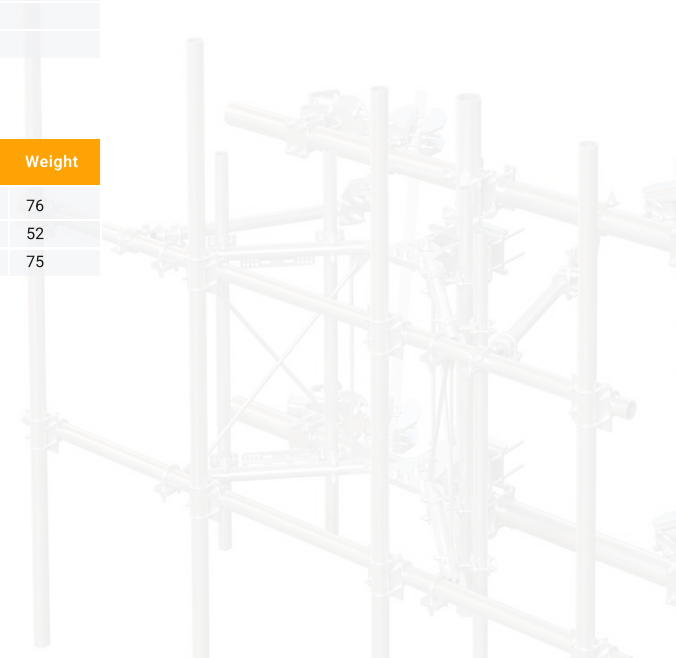
- Features BCAM™ Taper Adjustment System
- Feature our Quick-Plate™ for easy grounding and addition of RRU mounting pipes or unistrut
- Include stiff arm and hardware to mount 2-3/8" and 2-7/8" antenna mounting pipes
- Frames rotate for easy azimuth adjustment
- Contact us for load and engineering data



SKU	Face Length	Face OD	Ant. Pipe OD	Ant. Pipe Length	TB Qty.	RRU Pipe Qty.	RRU Pipe OD	RRU Pipe Length
VFA12HDF33010R4	132"	3.5"	2.875"	120"	2	4	2.375"	72"
VFA12HDF43010R4	126"	4.5"	2.875"	120"	2	4	2.375"	72"
VFA12HDF33010R2	132"	3.5"	2.875"	120"	2	2	2.375"	72"
VFA12HDF43010R2	126"	4.5"	2.875"	120"	2	2	2.375"	72"
VFA12HDF3308R4	132"	3.5"	2.875"	96"	2	4	2.375"	72"
VFA12HDF4308R4	126"	4.5"	2.875"	96"	2	4	2.375"	72"
VFA12HDF3308R2	132"	3.5"	2.875"	96"	2	2	2.375"	72"
VFA12HDF4308R2	126"	4.5"	2.875"	96"	2	2	2.375"	72"
VFA12HDF3210R4	132"	3.5"	2.375"	120"	2	4	2.375"	72"
VFA12HDF4210R4	126"	4.5"	2.375"	120"	2	4	2.375"	72"
VFA12HDF3210R2	132"	3.5"	2.375"	120"	2	2	2.375"	72"
VFA12HDF4210R2	126"	4.5"	2.375"	120"	2	2	2.375"	72"
VFA12HDF328R4	132"	3.5"	2.375"	96"	2	4	2.375"	72"
VFA12HDF428R4	126"	4.5"	2.375"	96"	2	4	2.375"	72"
VFA12HDF328R2	132"	3.5"	2.375"	96"	2	2	2.375"	72"
VFA12HDF428R2	126"	4.5"	2.375"	96"	2	2	2.375"	72"

### Works With

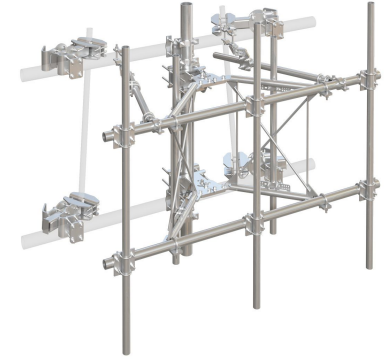
SKU	Name	Description	Weight
FACE-LLEG	Large Leg Adapter Kit	This large leg adapter kit works with FACE series mounts to accommodate large pipe and angle.	76
FACE-PM	Pipe Mount Attachment Kit	This hardware kit is used to attach vertical antenna mounting pipes to horizontal face pipes.	52
FSP296-K	2-3/8" Face Strut Pipe Kit	This universal face strut pipe kit allows additional tiebacks to be added.	75



## 12' HD Series™ V-Frames (1 Sector Kit, wo/ Horizontal Pipe)

This purpose-built, 1-sector face kit contains the 12' HD Series™ with face mount (no horizontal), includes four (4) antenna and RRU pipes.

- Features BCAM™ Taper Adjustment System
- Feature our Quick-Plate™ for easy grounding and addition of RRU mounting pipes or unistrut
- Include stiff arm and hardware to mount 2-3/8" and 2-7/8" antenna mounting pipes
- Frames rotate for easy azimuth adjustment
- Contact us for load and engineering data



SKU	Face Length	Face OD	Ant. Pipe OD	Ant. Pipe Length	TB Qty.	RRU Pipe Qty.	RRU Pipe OD	RRU Pipe Length
VFA12HDFN3010R4	No Pipe	No Pipe	2.875"	120"	2	4	2.375"	72"
VFA12HDFN3010R2	No Pipe	No Pipe	2.875"	120"	2	2	2.375"	72"
VFA12HDFN308R4	No Pipe	No Pipe	2.875"	96"	2	4	2.375"	72"
VFA12HDFN308R2	No Pipe	No Pipe	2.875"	96"	2	2	2.375"	72"
VFA12HDFN210R4	No Pipe	No Pipe	2.375"	120"	2	4	2.375"	72"
VFA12HDFN210R2	No Pipe	No Pipe	2.375"	120"	2	2	2.375"	72"
VFA12HDFN28R4	No Pipe	No Pipe	2.375"	96"	2	4	2.375"	72"
VFA12HDFN28R2	No Pipe	No Pipe	2.375"	96"	2	2	2.375"	72"

### Works With

SKU	Name	Description	Weight
FACE-LLEG	Large Leg Adapter Kit	This large leg adapter kit works with FACE series mounts to accommodate large pipe and angle.	76
FACE-PM	Pipe Mount Attachment Kit	This hardware kit is used to attach vertical antenna mounting pipes to horizontal face pipes.	52
FSP296-K	2-3/8" Face Strut Pipe Kit	This universal face strut pipe kit allows additional tiebacks to be added.	75



# Index by Part Number

3VFA10HDM210R2	14	3VFA12HDM3010R4	15	3VFA8HDT28R2	26
3VFA10HDM210R4	14	3VFA12HDM308R2	15	3VFA8HDT28R4	26
3VFA10HDM28R2	14	3VFA12HDM308R4	15	3VFA8HDT3010R2	26
3VFA10HDM28R4	14	3VFA12HDT210R2	28	3VFA8HDT3010R4	26
3VFA10HDM3010R2	14	3VFA12HDT210R4	28	3VFA8HDT308R2	26
3VFA10HDM3010R4	14	3VFA12HDT28R2	28	3VFA8HDT308R4	26
3VFA10HDM308R2	14	3VFA12HDT28R4	28	3VFA8XDM210R2	10
3VFA10HDM308R4	14	3VFA12HDT3010R2	28	3VFA8XDM210R4	10
3VFA10HDT210R2	27	3VFA12HDT3010R4	28	3VFA8XDM28R2	10
3VFA10HDT210R4	27	3VFA12HDT308R2	28	3VFA8XDM28R4	10
3VFA10HDT28R2	27	3VFA12HDT308R4	28	3VFA8XDM3010R2	10
3VFA10HDT28R4	27	3VFA12XDM210R2	12	3VFA8XDM3010R4	10
3VFA10HDT3010R2	27	3VFA12XDM210R4	12	3VFA8XDM308R2	10
3VFA10HDT3010R4	27	3VFA12XDM28R2	12	3VFA8XDM308R4	10
3VFA10HDT308R2	27	3VFA12XDM28R4	12	3VFA8XDT210R2	23
3VFA10HDT308R4	27	3VFA12XDM3010R2	12	3VFA8XDT210R4	23
3VFA10XDM210R2	11	3VFA12XDM3010R4	12	3VFA8XDT28R2	23
3VFA10XDM210R4	11	3VFA12XDM308R2	12	3VFA8XDT28R4	23
3VFA10XDM28R2	11	3VFA12XDM308R4	12	3VFA8XDT3010R2	23
3VFA10XDM28R4	11	3VFA12XDT210R2	25	3VFA8XDT3010R4	23
3VFA10XDM3010R2	11	3VFA12XDT210R4	25	3VFA8XDT308R2	23
3VFA10XDM3010R4	11	3VFA12XDT28R2	25	3VFA8XDT308R4	23
3VFA10XDM308R2	11	3VFA12XDT28R4	25	4VFA10HDM210R2	8
3VFA10XDM308R4	11	3VFA12XDT3010R2	25	4VFA10HDM210R4	8
3VFA10XDT210R2	24	3VFA12XDT3010R4	25	4VFA10HDM28R2	8
3VFA10XDT210R4	24	3VFA12XDT308R2	25	4VFA10HDM28R4	8
3VFA10XDT28R2	24	3VFA12XDT308R4	25	4VFA10HDM3010R2	8
3VFA10XDT28R4	24	3VFA8HDM210R2	13	4VFA10HDM3010R4	8
3VFA10XDT3010R2	24	3VFA8HDM210R4	13	4VFA10HDM308R2	8
3VFA10XDT3010R4	24	3VFA8HDM28R2	13	4VFA10HDM308R4	8
3VFA10XDT308R2	24	3VFA8HDM28R4	13	4VFA10HDT210R2	21
3VFA10XDT308R4	24	3VFA8HDM3010R2	13	4VFA10HDT210R4	21
3VFA12HDM210R2	15	3VFA8HDM3010R4	13	4VFA10HDT28R2	21
3VFA12HDM210R4	15	3VFA8HDM308R2	13	4VFA10HDT28R4	21
3VFA12HDM28R2	15	3VFA8HDM308R4	13	4VFA10HDT3010R2	21
3VFA12HDM28R4	15	3VFA8HDT210R2	26	4VFA10HDT3010R4	21
3VFA12HDM3010R2	15	3VFA8HDT210R4	26	4VFA10HDT308R2	21

# Index by Part Number (Continued)

4VFA12XDM308R2	6	4VFA8XDT28R4	17	VFA10XDF4210R2	31
4VFA12XDM308R4	6	4VFA8XDT3010R2	17	VFA10XDF4210R4	31
4VFA12XDT210R2	19	4VFA8XDT3010R4	17	VFA10XDF428R2	31
4VFA12XDT210R4	19	4VFA8XDT308R2	17	VFA10XDF428R4	31
4VFA12XDT28R2	19	4VFA8XDT308R4	17	VFA10XDF43010R2	31
4VFA12XDT28R4	19	VFA10HDF3210R2	37	VFA10XDF43010R4	31
4VFA12XDT3010R2	19	VFA10HDF3210R4	37	VFA10XDF4308R2	31
4VFA12XDT3010R4	19	VFA10HDF328R2	37	VFA10XDF4308R4	31
4VFA12XDT308R2	19	VFA10HDF328R4	37	VFA10XDFN210R2	32
4VFA12XDT308R4	19	VFA10HDF33010R2	37	VFA10XDFN210R4	32
4VFA8HDM210R2	7	VFA10HDF33010R4	37	VFA10XDFN28R2	32
4VFA8HDM210R4	7	VFA10HDF3308R2	37	VFA10XDFN28R4	32
4VFA8HDM28R2	7	VFA10HDF3308R4	37	VFA10XDFN3010R2	32
4VFA8HDM28R4	7	VFA10HDF4210R2	37	VFA10XDFN3010R4	32
4VFA8HDM3010R2	7	VFA10HDF4210R4	37	VFA10XDFN308R2	32
4VFA8HDM3010R4	7	VFA10HDF428R2	37	VFA10XDFN308R4	32
4VFA8HDM308R2	7	VFA10HDF428R4	37	VFA12HDF3210R2	39
4VFA8HDM308R4	7	VFA10HDF43010R2	37	VFA12HDF3210R4	39
4VFA8HDT210R2	20	VFA10HDF43010R4	37	VFA12HDF328R2	39
4VFA8HDT210R4	20	VFA10HDF4308R2	37	VFA12HDF328R4	39
4VFA8HDT28R2	20	VFA10HDF4308R4	37	VFA12HDF33010R2	39
4VFA8HDT28R4	20	VFA10HDFN210R2	38	VFA12HDF33010R4	39
4VFA8HDT3010R2	20	VFA10HDFN210R4	38	VFA12HDF3308R2	39
4VFA8HDT3010R4	20	VFA10HDFN28R2	38	VFA12HDF3308R4	39
4VFA8HDT308R2	20	VFA10HDFN28R4	38	VFA12HDF4210R2	39
4VFA8HDT308R4	20	VFA10HDFN3010R2	38	VFA12HDF4210R4	39
4VFA8XDM210R2	4	VFA10HDFN3010R4	38	VFA12HDF428R2	39
4VFA8XDM210R4	4	VFA10HDFN308R2	38	VFA12HDF428R4	39
4VFA8XDM28R2	4	VFA10HDFN308R4	38	VFA12HDF43010R2	39
4VFA8XDM28R4	4	VFA10XDF3210R2	31	VFA12HDF43010R4	39
4VFA8XDM3010R2	4	VFA10XDF3210R4	31	VFA12HDF4308R2	39
4VFA8XDM3010R4	4	VFA10XDF328R2	31	VFA12HDF4308R4	39
4VFA8XDM308R2	4	VFA10XDF328R4	31	VFA12HDFN210R2	40
4VFA8XDM308R4	4	VFA10XDF33010R2	31	VFA12HDFN210R4	40
4VFA8XDT210R2	17	VFA10XDF33010R4	31	VFA12HDFN28R2	40
4VFA8XDT210R4	17	VFA10XDF3308R2	31	VFA12HDFN28R4	40
4VFA8XDT28R2	17	VFA10XDF3308R4	31	VFA12HDFN3010R2	40

## Index by Part Number (Continued)

---

VFA8HDF43010R2	35
VFA8HDF43010R4	35
VFA8HDF4308R2	35
VFA8HDF4308R4	35
VFA8HDFN210R2	36
VFA8HDFN210R4	36
VFA8HDFN28R2	36
VFA8HDFN28R4	36
VFA8HDFN3010R2	36
VFA8HDFN3010R4	36
VFA8HDFN308R2	36
VFA8HDFN308R4	36
VFA8XDF3210R2	29
VFA8XDF3210R4	29
VFA8XDF328R2	29
VFA8XDF328R4	29
VFA8XDF33010R2	29
VFA8XDF33010R4	29
VFA8XDF3308R2	29
VFA8XDF3308R4	29
VFA8XDF4210R2	29
VFA8XDF4210R4	29
VFA8XDF428R2	29
VFA8XDF428R4	29
VFA8XDF43010R2	29
VFA8XDF43010R4	29
VFA8XDF4308R2	29
VFA8XDF4308R4	29
VFA8XDFN210R2	30
VFA8XDFN210R4	30
VFA8XDFN28R2	30
VFA8XDFN28R4	30
VFA8XDFN3010R2	30
VFA8XDFN3010R4	30
VFA8XDFN308R2	30
VFA8XDFN308R4	30

# Index by Product Name

---

## Tower Sites

10' HD Series™ V-Frames (1 Sector Kit, w/ Horizontal Pipe)	37	8' XD Series™ V-Frames (3 Sector Kit)	10
10' HD Series™ V-Frames (1 Sector Kit, wo/ Horizontal Pipe)	38	8' XD Series™ V-Frames (4 Sector Kit)	4
10' HD Series™ V-Frames (3 Sector Kit)	27		
10' HD Series™ V-Frames (4 Sector Kit)	21		
10' XD Series™ V-Frames (1 Sector Kit, w/ Horizontal Pipe)	31		
10' XD Series™ V-Frames (1 Sector Kit, wo/ Horizontal Pipe)	32		
10' XD Series™ V-Frames (3 Sector Kit)	24		
10' XD Series™ V-Frames (4 Sector Kit)	18		
12' HD Series™ V-Frames (1 Sector Kit, wo/ Horizontal Pipe)	40		
12' HD Series™ V-Frames (1 Sector Kit, w/ Horizontal Pipe)	39		
12' HD Series™ V-Frames (3 Sector Kit)	28		
12' HD Series™ V-Frames (4 Sector Kit)	22		
12' XD Series™ V-Frames (1 Sector Kit, w/ Horizontal Pipe)	33		
12' XD Series™ V-Frames (1 Sector Kit, wo/ Horizontal Pipe)	34		
12' XD Series™ V-Frames (3 Sector Kit)	25		
12' XD Series™ V-Frames (4 Sector Kit)	19		
8' HD Series™ V-Frames (1 Sector Kit, w/ Horizontal Pipe)	35		
8' HD Series™ V-Frames (1 Sector Kit, wo/ Horizontal Pipe)	36		
8' HD Series™ V-Frames (3 Sector Kit)	26		
8' HD Series™ V-Frames (4 Sector Kit)	20		
8' XD Series™ V-Frames (1 Sector Kit, w/ Horizontal Pipe)	29		
8' XD Series™ V-Frames (1 Sector Kit, wo/ Horizontal Pipe)	30		
8' XD Series™ V-Frames (3 Sector Kit)	23		
8' XD Series™ V-Frames (4 Sector Kit)	17		

## Monopole Sites

10' HD Series™ V-Frames (3 Sector Kit)	14
10' HD Series™ V-Frames (4 Sector Kit)	8
10' XD Series™ V-Frames (3 Sector Kit)	11
10' XD Series™ V-Frames (4 Sector Kit)	5
12' HD Series™ V-Frames (3 Sector Kit)	15
12' HD Series™ V-Frames (4 Sector Kit)	9
12' XD Series™ V-Frames (3 Sector Kit)	12
12' XD Series™ V-Frames (4 Sector Kit)	6
8' HD Series™ V-Frames (3 Sector Kit)	13
8' HD Series™ V-Frames (4 Sector Kit)	7



© 2026 Valmont Telecommunications, Inc. All rights reserved.

15000 Valmont Plaza, Omaha, NE 68154 USA

Valmont is committed to providing products and services that enhance the lives of our customers, employees, and communities and to do so in an increasingly efficient and environmentally friendly manner. For more information about our commitment to sustainability, please visit [investors.valmont.com/sustainability](https://investors.valmont.com/sustainability).

Updated: 06/26 Document: SP1-SFM-001