

June 2022

Installation Instructions

900353-01 – PIM Cable Support Bar, Pole Mount Kit, 22 Position

900353-02 – PIM Cable Support Bar, Pole Mount Kit, 22 Position, Extended Range

STEP 1

Attach threaded rods to bracket, set to correct offset length. (Torque greater than 20 Ft-lb)

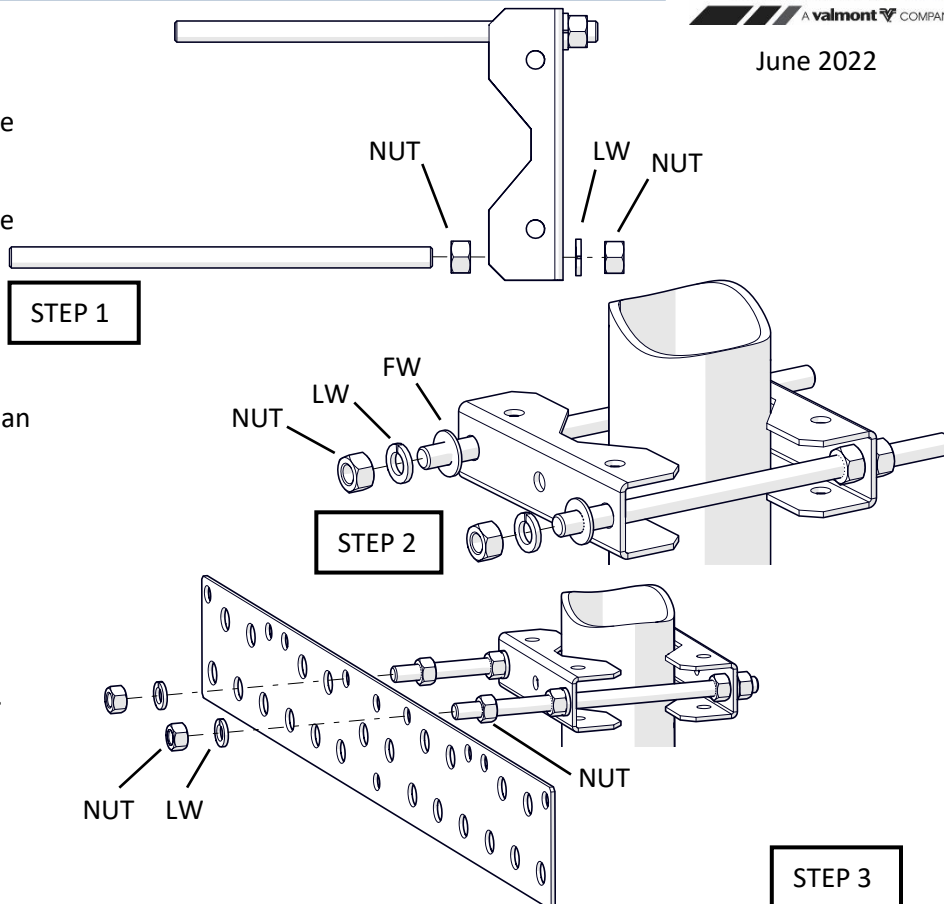
STEP 2

Attach saddle brackets to pole.

STEP 3

Attach 22 Position Bar to threaded rods.

Torque: 20 Ft-lb all connections
(ConcealFab Tool PN: 900413)



900353 INSTALLATION INSTRUCTIONS

June 2022

Installation Instructions

900353-01 – PIM Cable Support Bar, Pole Mount Kit, 22 Position

900353-02 – PIM Cable Support Bar, Pole Mount Kit, 22 Position, Extended Range

STEP 1

Attach threaded rods to bracket, set to correct offset length. (Torque greater than 20 Ft-lb)

STEP 2

Attach saddle brackets to pole.

STEP 3

Attach 22 Position Bar to threaded rods.

Torque: 20 Ft-lb all connections
(ConcealFab Tool PN: 900413)

