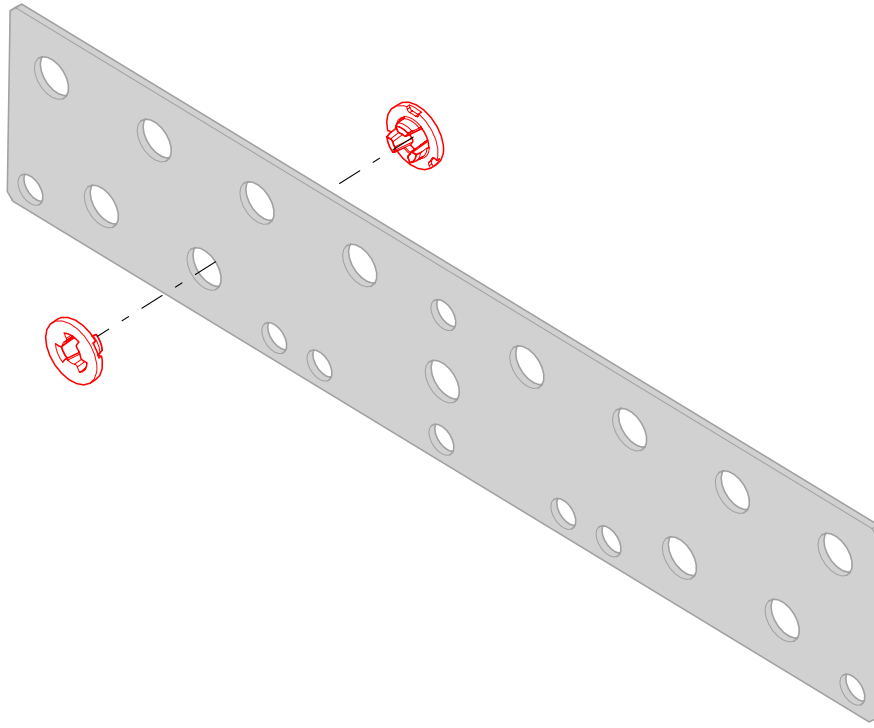


901191-10: PIM Shield Threaded Rod Insulator, (sold in packages of 10)

901191-50: PIM Shield Threaded Rod Insulator, (sold in packages of 50)

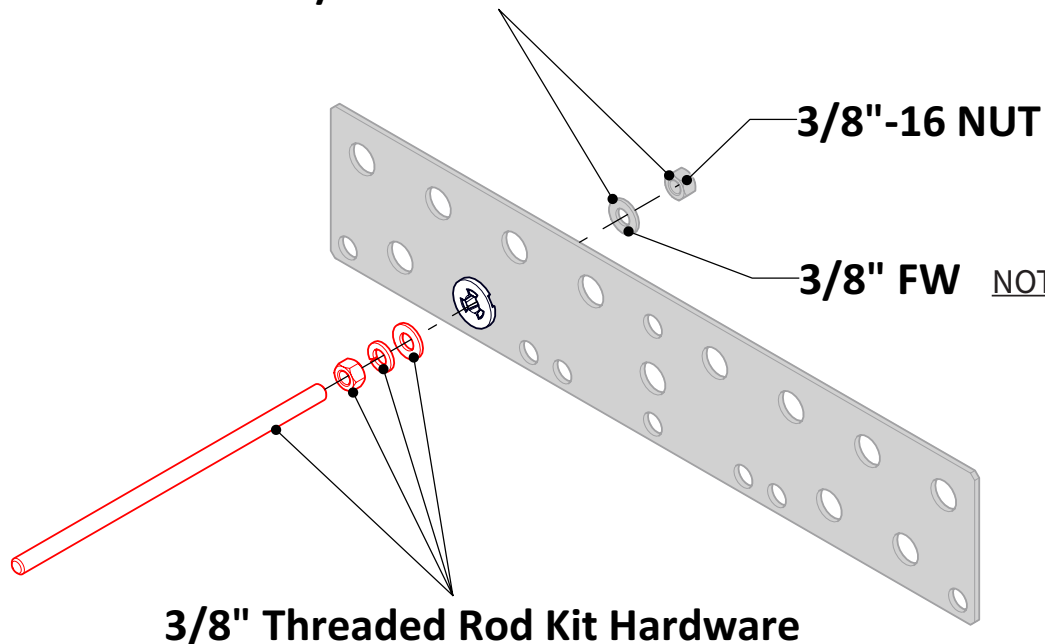
STEP 1: Install **2x Insulator** into **0.75-inch diameter Snap-in support hole**.



STEP 2: Install **threaded hardware** (Sold separately).

Torque Specification : 10 Ft-lbs. CF Tool 900053

(Confirm material / finish match Threaded Rod Kit hardware)



NOTE: Flat washers must have a minimum outside diameter of 0.77 inch.