

901217-3



50X



30X

SPECIFICATIONS

General

The 901217-3 cable support block conversion kit is intended to be used with ConcealFab's 901166-02-3 or 901167-02-3 bar kit site packs. Each kit includes the hardware needed to convert the bar kits to support RF cables using cable support blocks.

Each kit includes:

- 30x – 3/8-16 UNC-2A, SS, threaded rods, 6-inch long
- 40x – 3/8-16 UNC-2B, SS, Nut
- 40x – 3/8-inch, SS, Flat Washer
- 30x – 3/8-inch, SS, Lock Washer
- 30x – Threaded rod insulators (pairs)
- 50x – Cable support block (pairs), designed for 15mm – 17mm cable

System PIM performance (when tested at next higher assembly)

IM3 < -100 dBm when tested in accordance with IEC 62037-8, near field test, 2x 20W test tones, while subjected to dynamic stimulus. To achieve specified PIM performance, torque hardware to 10 FT-LB (ConcealFab tool 900053).

Material

- Threaded rods, nuts, washers – Stainless Steel
- Cable Support Blocks – Glass Filled Nylon
- Threaded rod insulators - Glass Filled Nylon

Case dimensions

12.5-inch x 9.0-inch x 6.0-inch

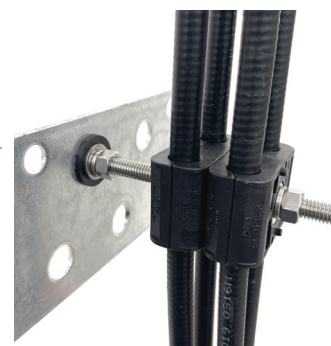
Case weight

15.1 lbs.

Qty per case

1

Each kit includes enough hardware to create 4 cable support stacks (with hardware to spare) as shown on each of the 6 bars provided with the 901166-02-3 or 901167-02-3 bar kits.



(Bar kits sold separately)