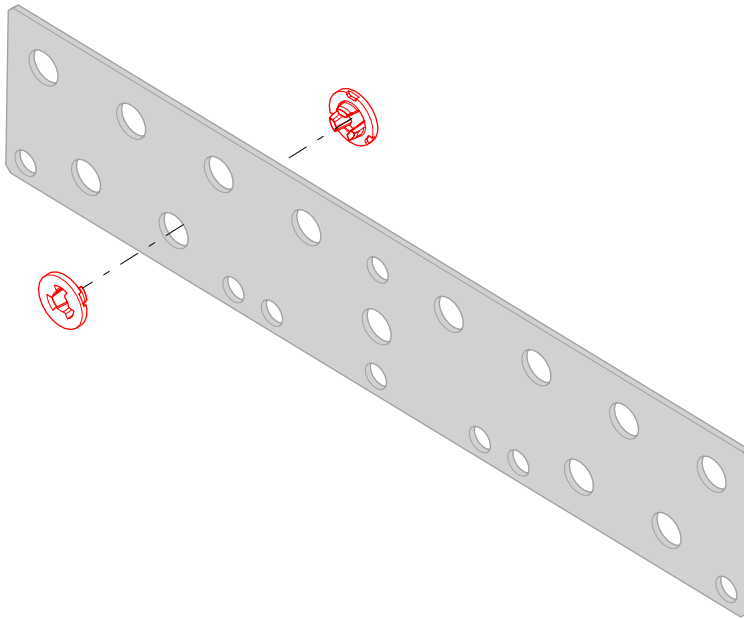


ConcealFab's 901166-02-3 and 901167-02-3 site kits are 3-packs of bar kits (with extra bars included) designed to secure RF cables using snap-in style cable hangers. The 901217-3 conversion kit includes the hardware needed to adapt either site kit to support RF cables using PSCB-1517-10 Cable Support Blocks rather than snap-ins. Each kit includes 30 stainless steel threaded rod kits, 30 insulator kits and 50 cable support block kits.

NOTE: Repeat steps shown below for each desired cable support location

STEP 1: Install **2x Insulator** into **0.75-inch diameter Snap-in support hole**.



STEP 2: Install **threaded hardware** and **PIM Shield Cable Block(s)**.

Torque Specification : 10 Ft-lbs. CF Tool 900053

