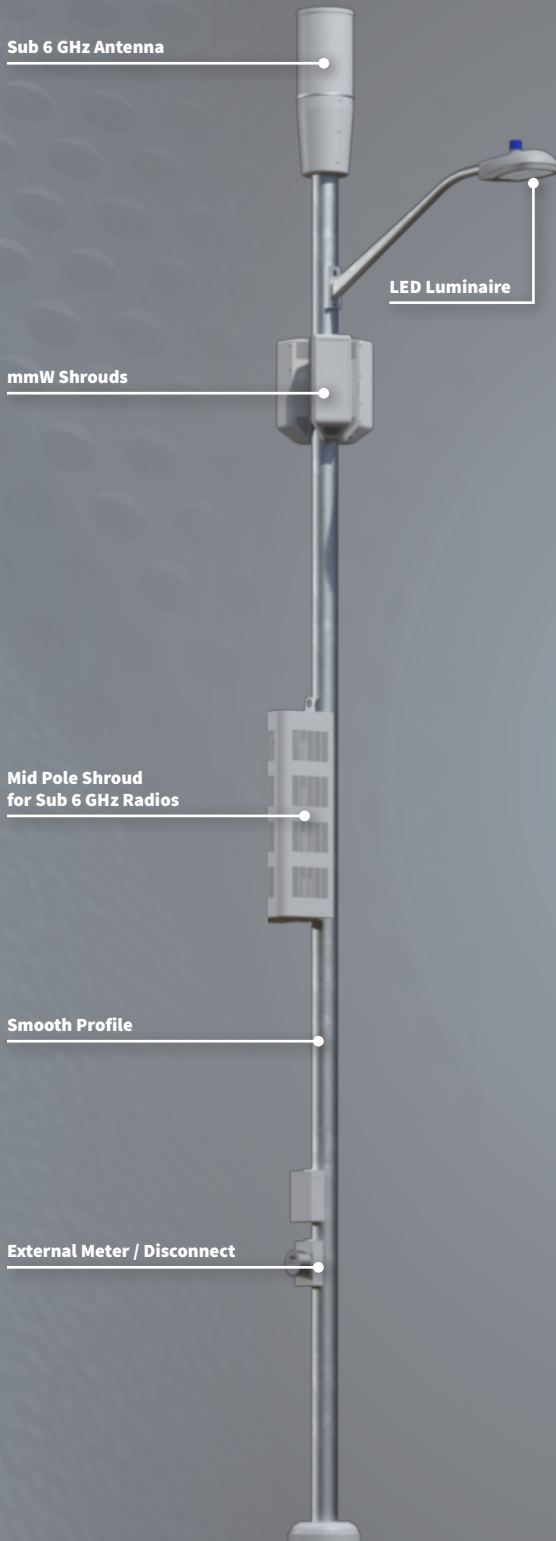


PRODUCT SUMMARY

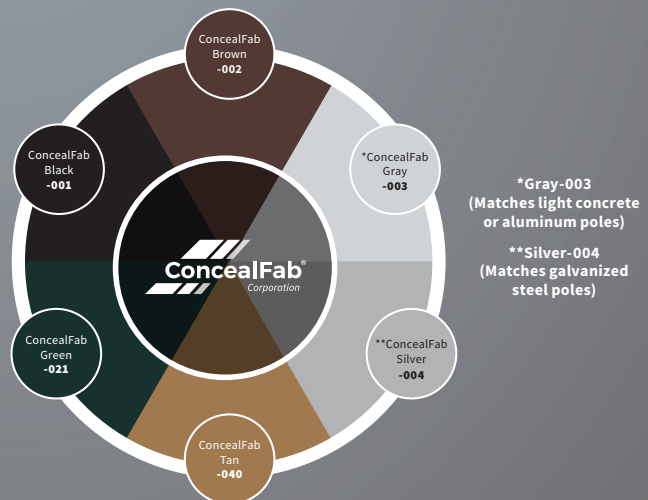
The standard pole portfolio has a mix of aesthetically pleasing multi-use poles designed to hang multiple equipment attachments for capacity and coverage in a given area. Standard poles come in several nominal sizes and accommodate a variety of different luminaires making them an ideal solution for hard-to-permit locations.

SPECIFICATIONS

Overview	4G/5G Standard Poles w/ handholes for fiber, power & coax access
Capacity	(1) Pole top shroud for low-powered radios, (1) Side-mount shroud for high-powered Sub 6 GHz radios, (1) Universal cantenna sleeve for all omni-directional canister antennas, and (3) Modular shrouds w/ downtilt for each tenant's mmW deployment
Sheathing	Smooth (6", 8" & 10" nominal sizing)
Equipment	Accommodates all micro & small cell RAN equipment vendors
Material	Galvanized, carbon steel frame
Radome	clearWave™ for all mmW and Sub 6 GHz applications
Max. Wind Speed	Up to 171 MPH (as required)
Luminaire	Universal luminaire arm accommodates most luminaires.
Smart City	Video surveillance, WIFI, weather monitoring and reporting, gunshot detection, GPS, remote sensing, custom color matching and more
Foundation	Cast-in-place, direct-embed, driven pile, anchor bolt kit sold separately; foundation design available
Structural	Analysis per TIA-222, AASHTO & Local building codes
Thermal	Passive & active cooling (as required) in accordance with GR-487
Electrical	Externally mounting available for all AC & DC power equipment vendors

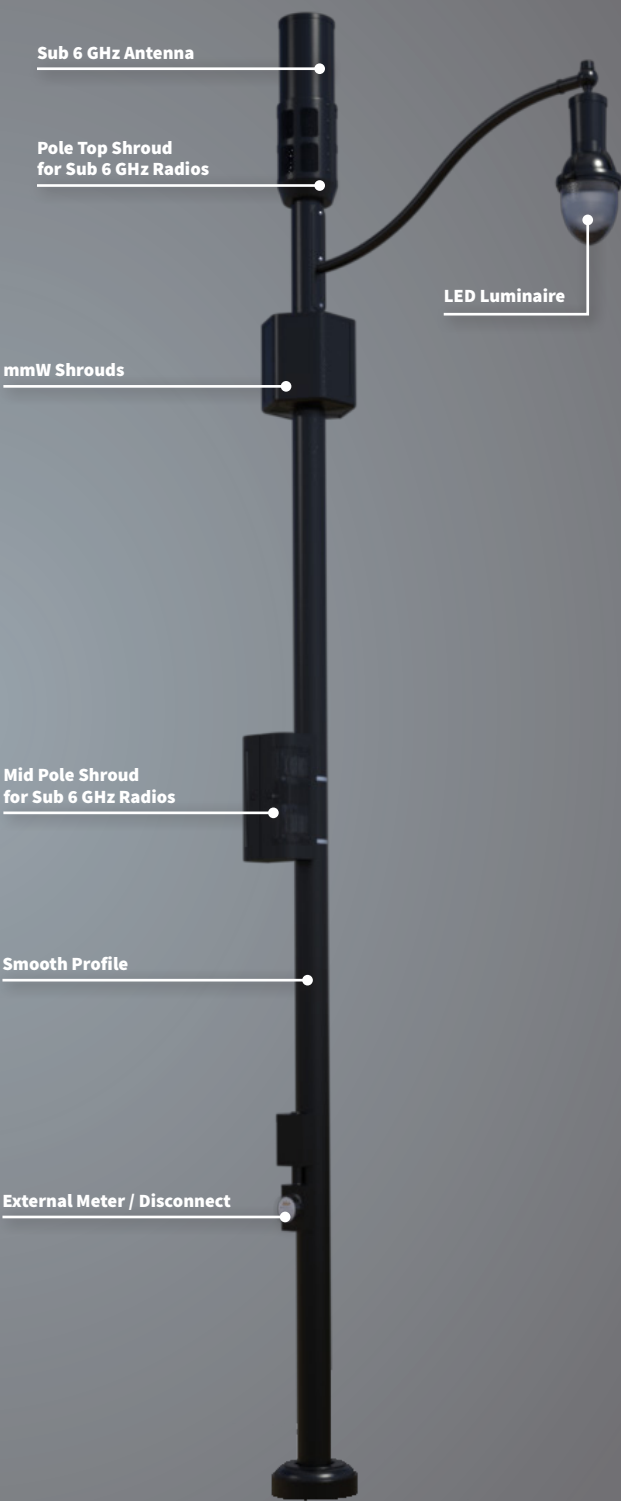


**6" SMOOTH
STANDARD POLE**





8" SMOOTH
STANDARD POLE



10" SMOOTH
STANDARD POLE