



## Strength, Durability, and PIM Mitigation. All in One.

Available in polymer and hybrid configurations, PIM Shield® Polymer Cable Support Bars isolate snap-ins and cable accessories from metal at the plate end, where PIM risk is highest. Choose polymer clamps for the cleanest non-metallic interface at the pole, or steel clamps when maximum holding strength takes priority.



### PIM Reduced by Design

The polymer bar isolates snap-ins and cable accessories from metal at the plate end, where PIM risk is highest. Polymer clamps extend that non-metallic interface all the way to the pole.



### Pair with Gen 2 Snap-Ins to Optimize PIM Mitigation Performance

The bar's 3/4" molded holes accept standard snap-ins. For a fully non-metallic interface, no metal clips, straps, or contact surfaces at the attachment points, pair with our Gen 2 Snap-Ins.



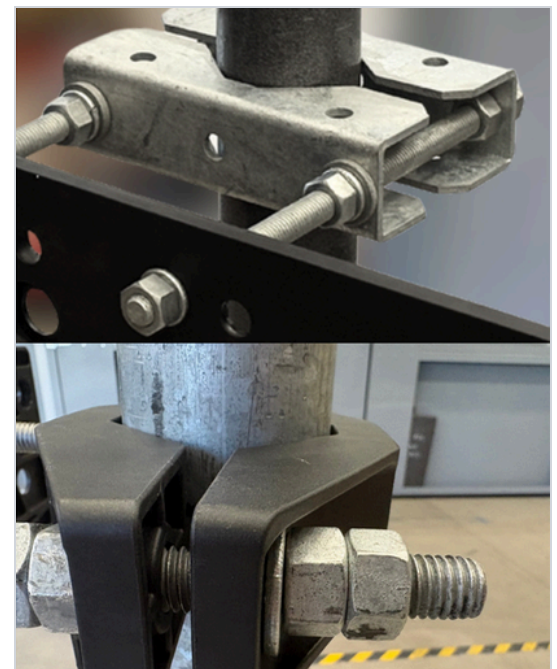
### Stays Stable Under Wind & Vibration

PIM issues often surface later, as hardware shifts or loosens. The kit is engineered to hold position and resist micro-motion at the mount interface, where interference tends to develop over time.



### Strength Matched to the Site

Choose polymer clamps for the cleanest PIM interface, or steel clamps for maximum holding strength in high-wind and heavy-cable applications. Both mount to round legs 2-3/8" to 4-1/2" at 20 ft-lb torque.



#### Two Clamp Options

- Polymer: the cleanest non-metallic interface at the pole
- Steel: maximum holding strength for high-wind, heavy-cable sites

## Product Families

Both families share the same PIM Shield® polymer bar and Gen 2 Snap-In compatibility. The difference is at the pole: polymer clamps for maximum PIM mitigation, or steel clamps for maximum holding strength.

### Polymer Product Family (Polymer Bar & Polymer Clamps)

SKU	Name	Range	Positions	Weight
902053-01	Standard Polymer Cable Support Bar & Clamps	10"	13	3 lb
902053-02	Extended Range Polymer Cable Support Bar & Clamps	18"	13	3.75 lb
902055-02-3	Extended Range Polymer Cable Support Bar & Clamps (3-Pack)	18"	26	5.1 lb

### Hybrid Polymer Product Family (Polymer Bar & Steel Clamps)

SKU	Description	Range	Positions	Weight
901933-01	Standard	10"	13	6 lbs.
901933-02	Extended Range	18"	13	6 lbs.
901933-02-3	Extended Range (3-Pack)	18"	26	22 lbs.
901932	Extra Bar Kit	-	13	1 lb.